



61046 Twentynine Palms Hwy

Joshua Tree, California 92252

Property Highlights

- Sale Price: \$695,000.00
- 3,000,000 visitors a year to Joshua Tree National Park
- Property fronts on 29 Palms Highway
- 1 mile from Joshua Tree National Park Visitors Center
- APN#0602-401-05 and 06

Property Description

400 SF office building with 600 SF warehouse on 1/2 acre of land

Offering Summary

Building Size:	1,000 SF
----------------	----------



For more information

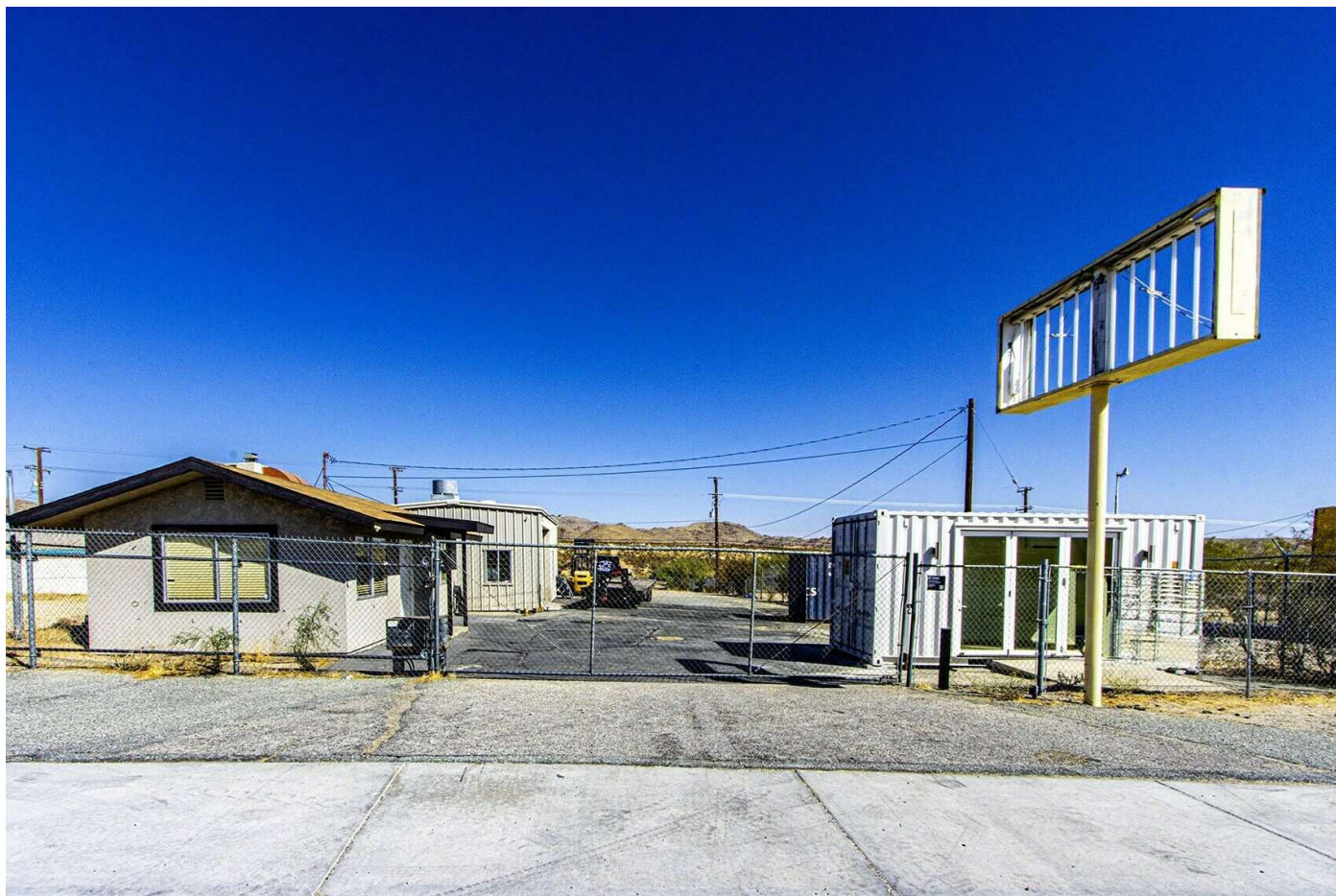
Ted Zwicker

O: 310.806.6139

tzwicker@naicapital.com | CalDRE #00328370

For Sale or Lease

61046 Twentynine Palms Hwy



Ted Zwicker

310.806.6139

tzwicker@naicapital.com

CalDRE #00328370

NAICapital
COMMERCIAL REAL ESTATE SERVICES, WORLDWIDE

For Sale or Lease

61046 Twentynine Palms Hwy



Ted Zwicker

310.806.6139

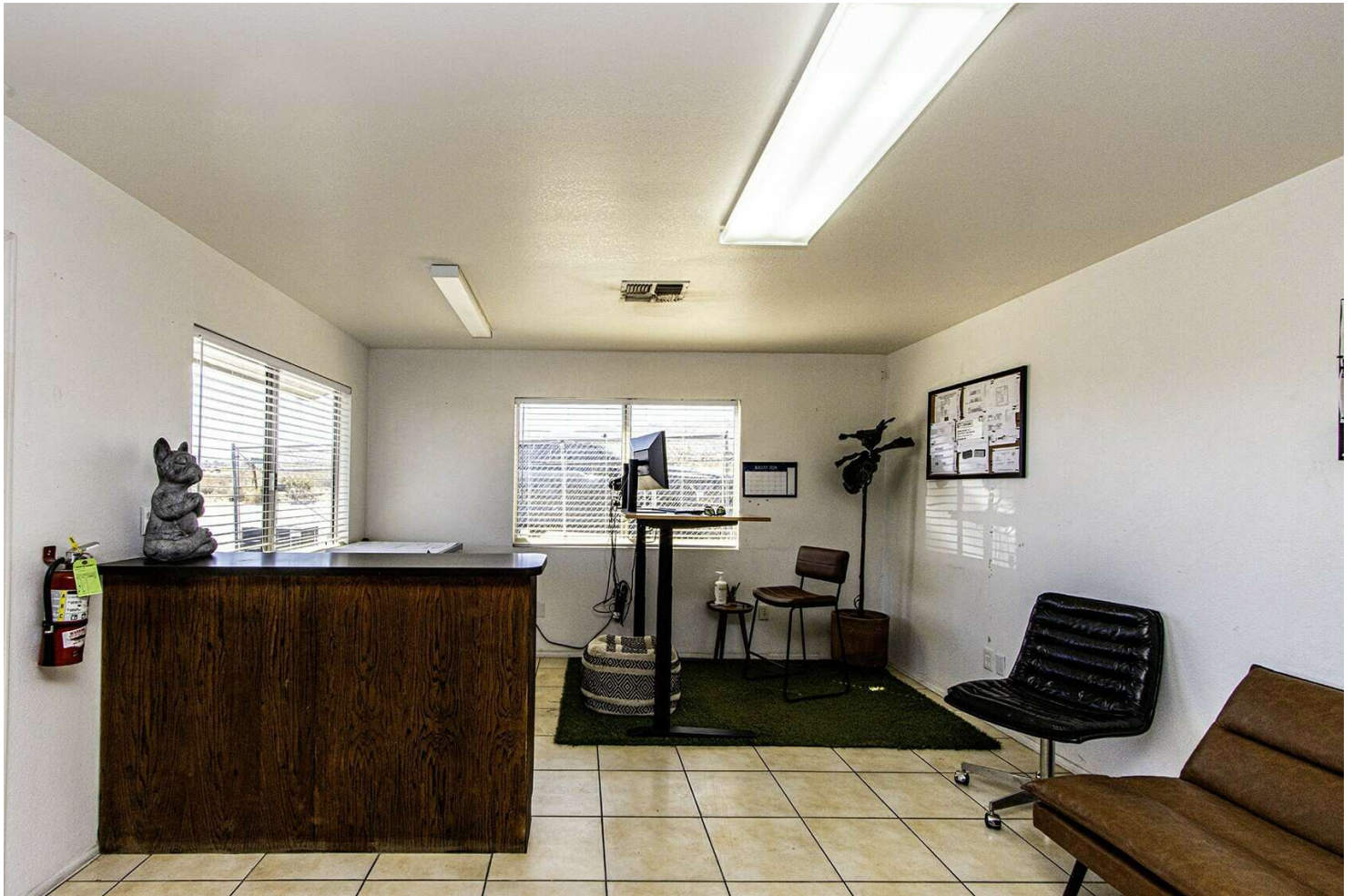
tzwicker@naicapital.com

CalDRE #00328370

NAICapital
COMMERCIAL REAL ESTATE SERVICES, WORLDWIDE

For Sale or Lease

61046 Twentynine Palms Hwy



Ted Zwicker

310.806.6139

tzwicker@naicapital.com

CalDRE #00328370

NAICapital
COMMERCIAL REAL ESTATE SERVICES, WORLDWIDE

For Sale or Lease

61046 Twentynine Palms Hwy



Ted Zwicker

310.806.6139

tzwicker@naicapital.com

CalDRE #00328370

NAICapital
COMMERCIAL REAL ESTATE SERVICES, WORLDWIDE