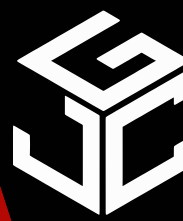


FOR LEASE

480 24th Ave NW,
Suite 248-258
Norman, OK 73069



Johnson
Commercial Group

JohnsonCommercialGroup.com



Offering Summary

Suite SF: 10,306 SF

Lease Rate: \$16 SF/YR

NNN Rate: \$4.50 SF/YR

Zoning: C-2

Year Built: 2010

Traffic Count: 18,451

Building Size: 85,726 SF

Property Overview

Suite 248-258 at Madison Square offers 10,306 SF of expansive office space ideal for larger users seeking flexibility and scale. The layout features a large open workspace area, 11 private offices, and a conference room, creating an efficient mix of collaborative and private work areas.

Additional features include a storage closet and access to a shared restroom with the surrounding upstairs area. Located in a high-traffic NW Norman center, this suite is an excellent opportunity for businesses needing a sizable, functional space in a prime location.

Chris Johnson
chris@jcgok.com
405.435.3572



BRICK & BEAM
REALTY

Sally Allen
sally@jcgok.com
405.623.7920

FOR LEASE

480 24th Ave NW,
Suite 248-258
Norman, OK 73069



Johnson

Commercial Group

JohnsonCommercialGroup.com



Chris Johnson
chris@jcgok.com
405.435.3572



Sally Allen
sally@jcgok.com
405.623.7920

FOR LEASE

480 24th Ave NW,
Suite 248-258
Norman, OK 73069



Johnson

Commercial Group

JohnsonCommercialGroup.com



Chris Johnson
chris@jcgok.com
405.435.3572



Sally Allen
sally@jcgok.com
405.623.7920

FOR LEASE

480 24th Ave NW,
Suite 248-258
Norman, OK 73069



Johnson

Commercial Group

JohnsonCommercialGroup.com



Chris Johnson
chris@jcgok.com
405.435.3572



Sally Allen
sally@jcgok.com
405.623.7920

FOR LEASE

480 24th Ave NW,
Suite 248-258
Norman, OK 73069



Johnson

Commercial Group

JohnsonCommercialGroup.com



Chris Johnson
chris@jcgok.com
405.435.3572

 **BRICK & BEAM**
REALTY

Sally Allen
sally@jcgok.com
405.623.7920

FOR LEASE

480 24th Ave NW,
Suite 248-258
Norman, OK 73069



Johnson

Commercial Group

JohnsonCommercialGroup.com



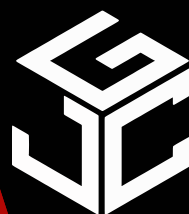
Chris Johnson
chris@jcgok.com
405.435.3572

 **BRICK & BEAM**
REALTY

Sally Allen
sally@jcgok.com
405.623.7920

FOR LEASE

480 24th Ave NW,
Suite 248-258
Norman, OK 73069



Johnson

Commercial Group

JohnsonCommercialGroup.com



Chris Johnson
chris@jcgok.com
405.435.3572



BRICK & BEAM
REALTY

Sally Allen
sally@jcgok.com
405.623.7920

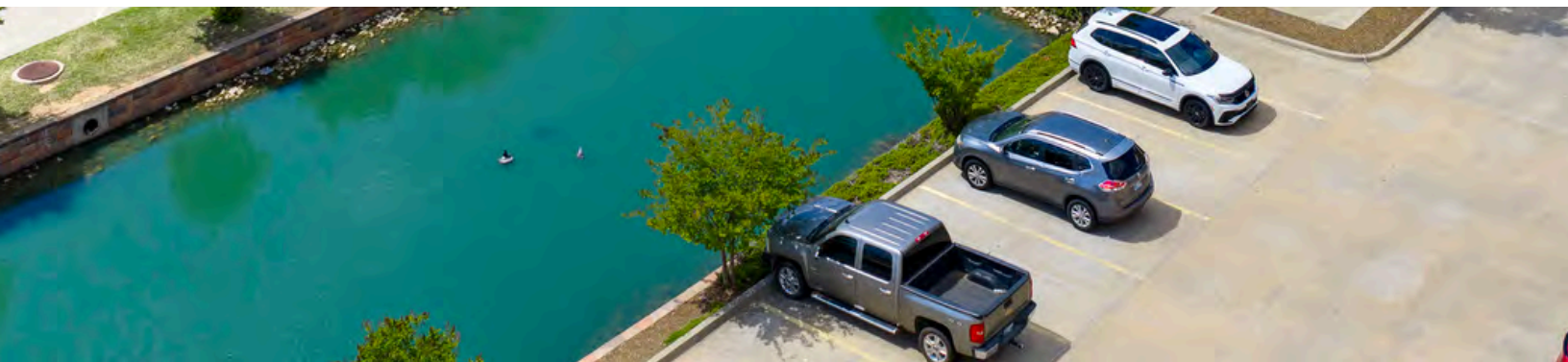
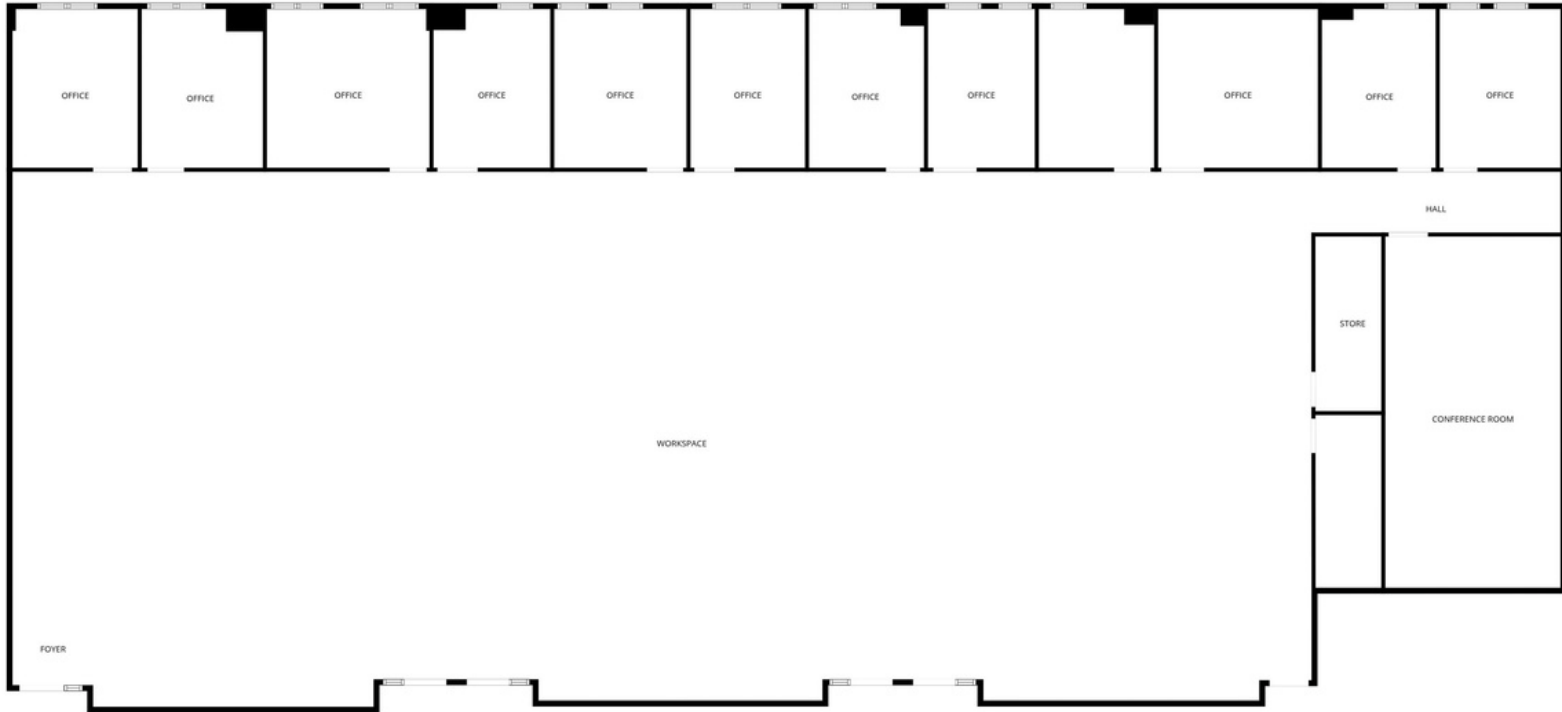
FOR LEASE

480 24th Ave NW,
Suite 248-258
Norman, OK 73069



Johnson
Commercial Group

JohnsonCommercialGroup.com



Chris Johnson
chris@jcgok.com
405.435.3572



Sally Allen
sally@jcgok.com
405.623.7920

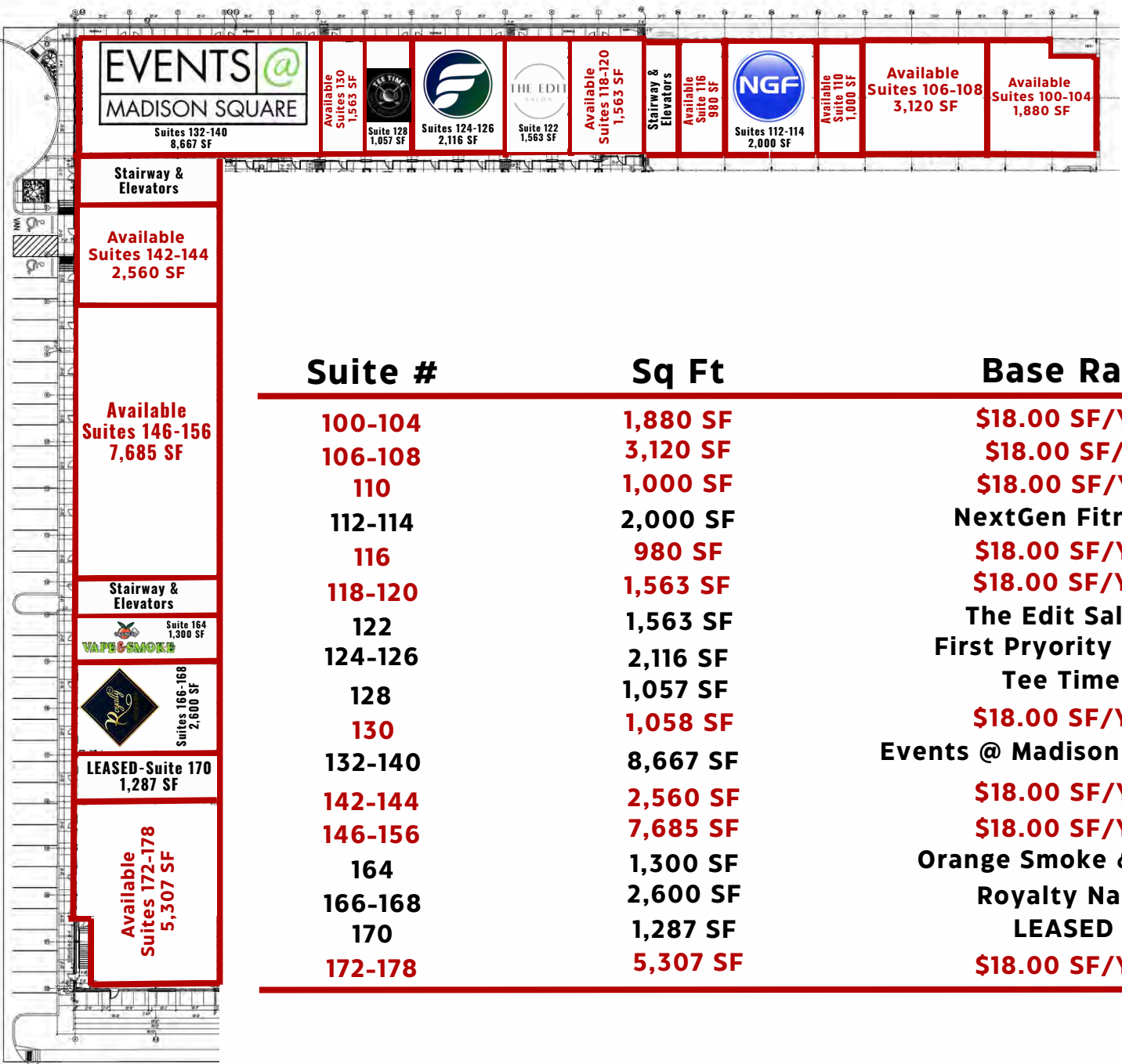
FOR LEASE

**First Floor
Suites 100-178**



Johnson
Commercial Group

JohnsonCommercialGroup.com



Suite #	Sq Ft	Base Rate
100-104	1,880 SF	\$18.00 SF/YR
106-108	3,120 SF	\$18.00 SF/YR
110	1,000 SF	\$18.00 SF/YR
112-114	2,000 SF	NextGen Fitness
116	980 SF	\$18.00 SF/YR
118-120	1,563 SF	\$18.00 SF/YR
122	1,563 SF	The Edit Salon
124-126	2,116 SF	First Priority Bank
128	1,057 SF	Tee Time
130	1,058 SF	\$18.00 SF/YR
132-140	8,667 SF	Events @ Madison Square
142-144	2,560 SF	\$18.00 SF/YR
146-156	7,685 SF	\$18.00 SF/YR
164	1,300 SF	Orange Smoke & Vape
166-168	2,600 SF	Royalty Nails
170	1,287 SF	LEASED
172-178	5,307 SF	\$18.00 SF/YR

Chris Johnson
chris@jcgok.com
405.435.3572



Sally Allen
sally@jcgok.com
405.623.7920

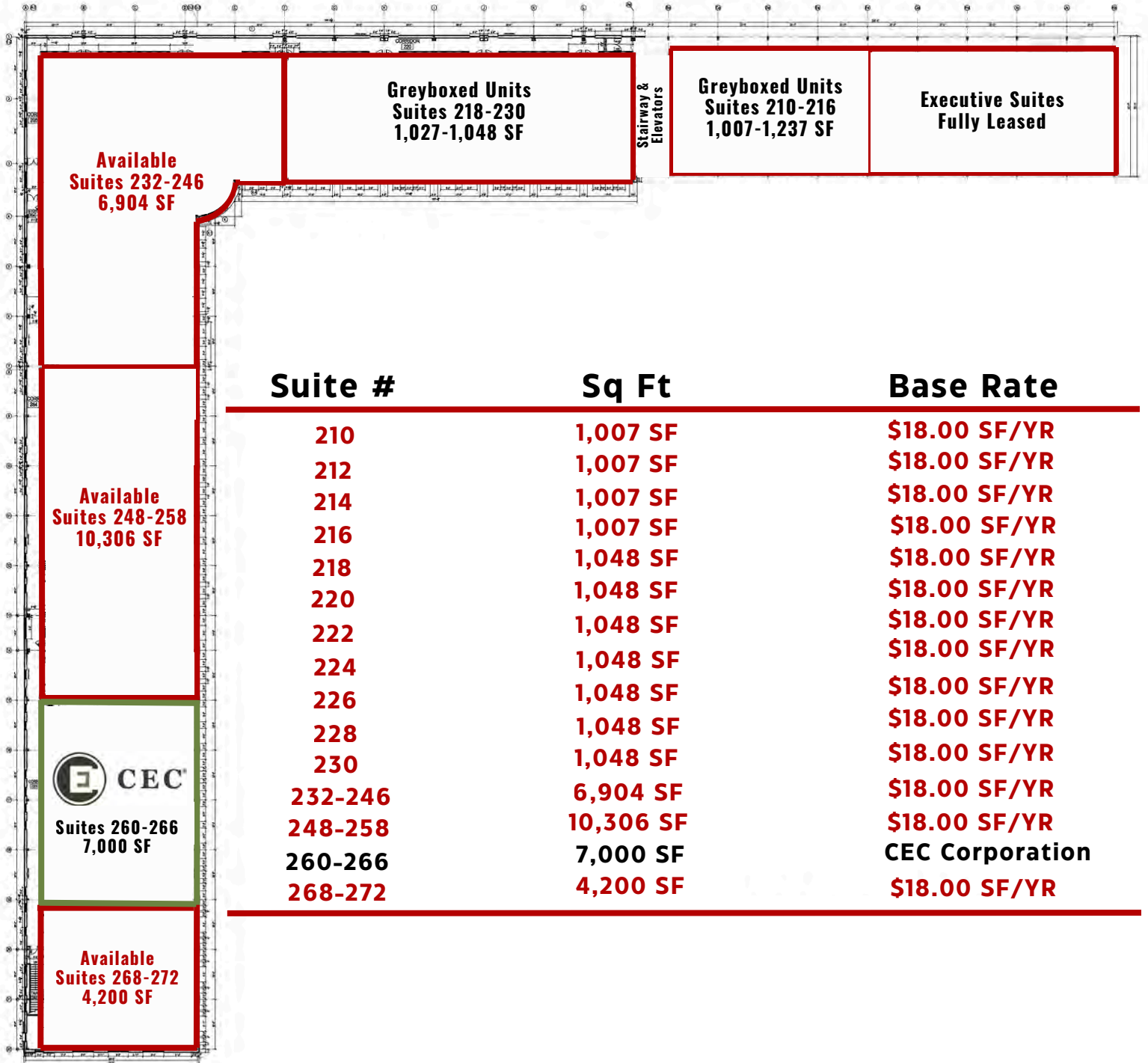
FOR LEASE

**Second Floor
Suites 210-272**



Johnson
Commercial Group

JohnsonCommercialGroup.com



Suite #	Sq Ft	Base Rate
210	1,007 SF	\$18.00 SF/YR
212	1,007 SF	\$18.00 SF/YR
214	1,007 SF	\$18.00 SF/YR
216	1,007 SF	\$18.00 SF/YR
218	1,048 SF	\$18.00 SF/YR
220	1,048 SF	\$18.00 SF/YR
222	1,048 SF	\$18.00 SF/YR
224	1,048 SF	\$18.00 SF/YR
226	1,048 SF	\$18.00 SF/YR
228	1,048 SF	\$18.00 SF/YR
230	1,048 SF	\$18.00 SF/YR
232-246	6,904 SF	\$18.00 SF/YR
248-258	10,306 SF	\$18.00 SF/YR
260-266	7,000 SF	CEC Corporation
268-272	4,200 SF	\$18.00 SF/YR

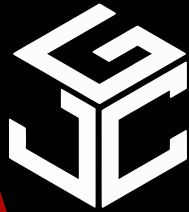
Chris Johnson
chris@jcgok.com
405.435.3572



Sally Allen
sally@jcgok.com
405.623.7920

FOR LEASE

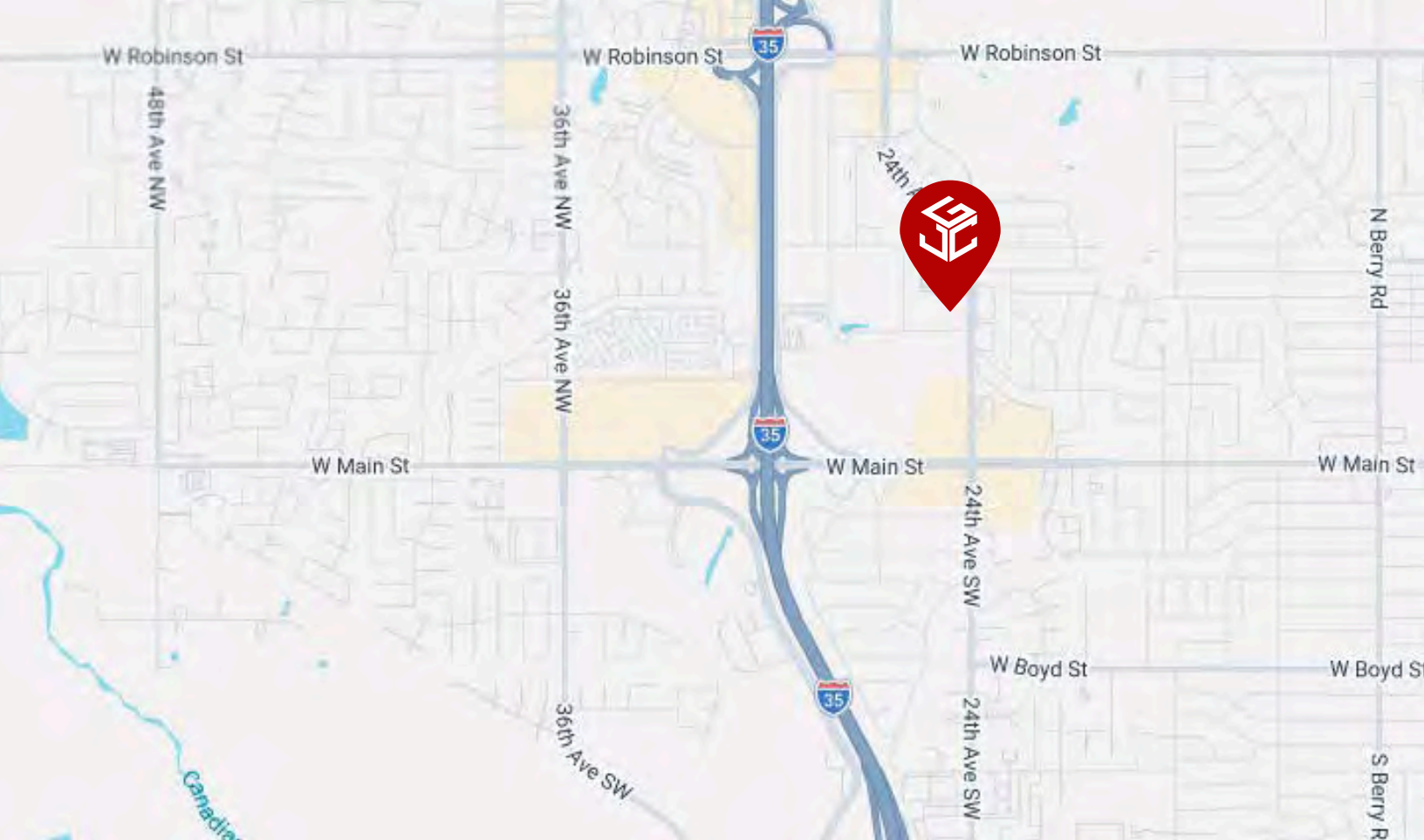
480 24th Ave NW,
Norman, OK 73069



Johnson

Commercial Group

JohnsonCommercialGroup.com



Chris Johnson
chris@jcgok.com
405.435.3572



Sally Allen
sally@jcgok.com
405.623.7920

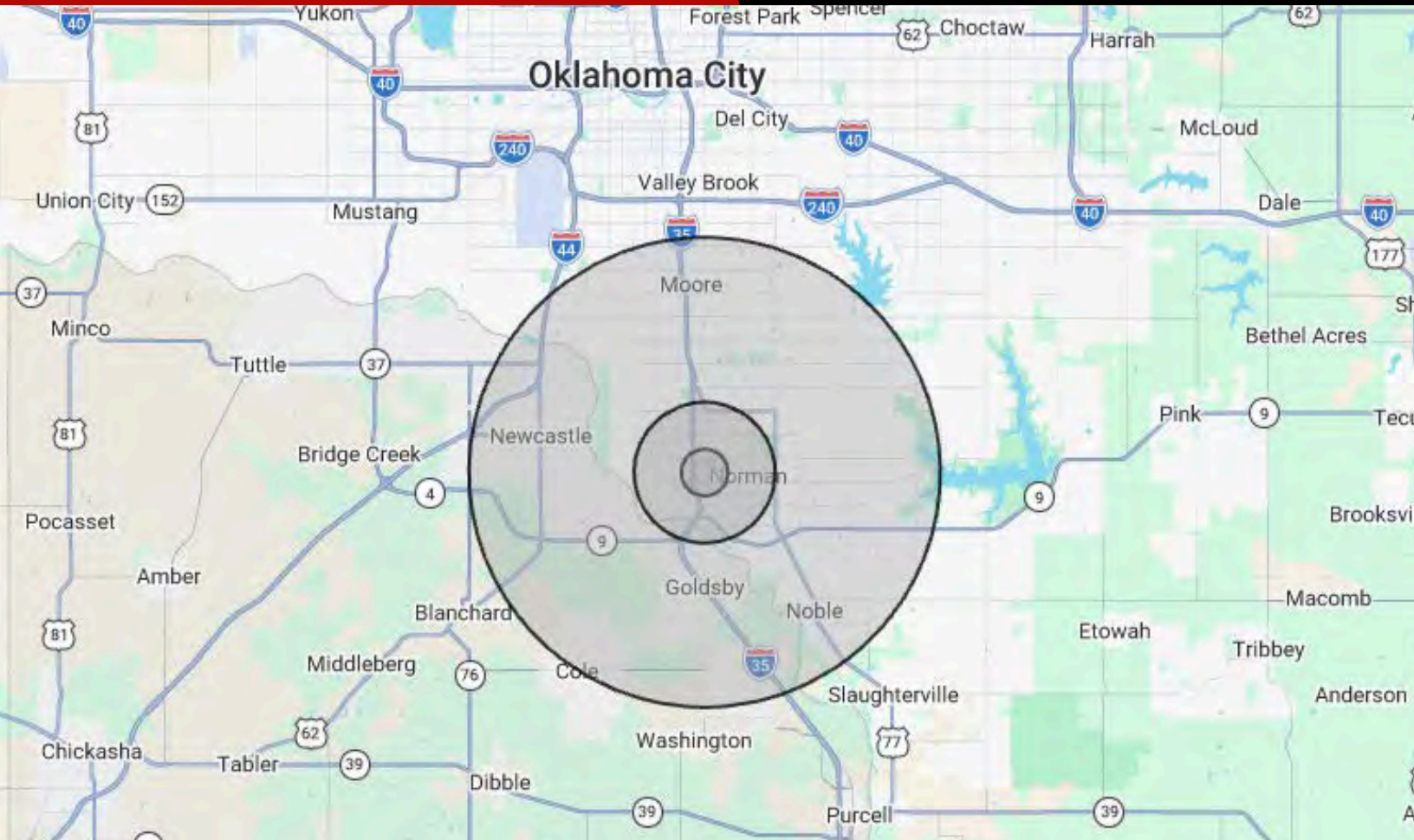
FOR LEASE

480 24th Ave NW,
Norman, OK 73069



Johnson
Commercial Group

JohnsonCommercialGroup.com



Demographics

1 MILE

3 MILE

10 MILE

Population	7,158	68,829	250,126
Average Age	40	32	35
Employment	9,453	70,865	118,888
Households	3,196	26,766	96,363
Ave. Household Income	\$72,333	\$81,299	\$85,537
Median Household Value	\$191,041	\$222,962	\$199,560

Traffic Count

Average Daily Volume

18,451 Vehicles

Demographic data provided by CoStar

Chris Johnson
chris@jcgok.com
405.435.3572

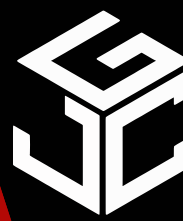


BRICK & BEAM
REALTY

Sally Allen
sally@jcgok.com
405.623.7920

FOR LEASE

480 24th Ave NW,
Norman, OK 73069



Johnson

Commercial Group

JohnsonCommercialGroup.com



Disclaimer

A real estate broker is not authorized to give legal or tax advice. No representation is made by Johnson Commercial Group, its agents or employees, as to the legal effect or tax consequences of the information contained herein or any transaction relating thereto. Although all information furnished regarding property sales or financing options are from sources deemed to be reliable, such information has not been verified and no express representation is made on, or is in any way implied as to the accuracy thereof and is subject to errors, omissions, change of price, or other conditions prior to sale or withdrawal without notice.

Chris Johnson
chris@jcgok.com
405.435.3572



Sally Allen
sally@jcgok.com
405.623.7920