

FOR SALE

3707 Jodeco Rd
Mcdonough, GA 30253

For More Information: Stephen Lovett

770.297.4807 | slovett@nortoncommercial.com



Norton Commercial
434 Green Street
Gainesville, GA 30501
nortoncommercial.com

NORTON

3707 Jodeco Rd

MCDONOUGH, GA 30253



OFFERING SUMMARY

Sale Price: \$1,425,000

Lot Size: 4.68 Acres

Year Built: 1958

Building Size: 16,144 SF

PROPERTY OVERVIEW

This exceptional church property in McDonough offers a versatile campus with four buildings totaling 16,144 square feet on 4.68 acres. The main church building, built in 1958, features a 2,030-square-foot sanctuary accommodating approximately 200 people, along with multiple classrooms, offices, and storage across three floors. A modern fellowship hall, constructed in 2002, boasts a spacious 3,400-square-foot open area with soaring ceilings, a large commercial kitchen, and additional storage. The front office/preschool building, built in 1965, includes six classrooms/offices, a kitchen, and 1.5 bathrooms -- perfect for Sunday school or community programs. Completing the property is a charming back parsonage house, built in 1963, offering 3 bedrooms, 2.5 bathrooms, a full kitchen, living and dining areas, an unfinished basement, and an attached garage. With approximately 100 parking spaces, this property is ideal for a growing congregation, community center, or educational facility, offering both versatility and practicality.

LOCATION OVERVIEW

Strategically located in Henry County, this property sits just 1.5 miles from I-75 at Exit 222 (Jodeco Rd/Flippen), providing excellent accessibility for visitors and members. The surrounding area is experiencing significant growth, with new commercial developments including Costco, Sprouts Market, and a variety of retail and residential communities. McDonough's thriving community offers a blend of suburban charm and modern conveniences.

For More Information: Patrick Cisco - 404.772.8608

Norton Commercial 434 Green Street Gainesville, GA 30501 nortoncommercial.com

Stephen Lovett

770.297.4807

slovett@nortoncommercial.com

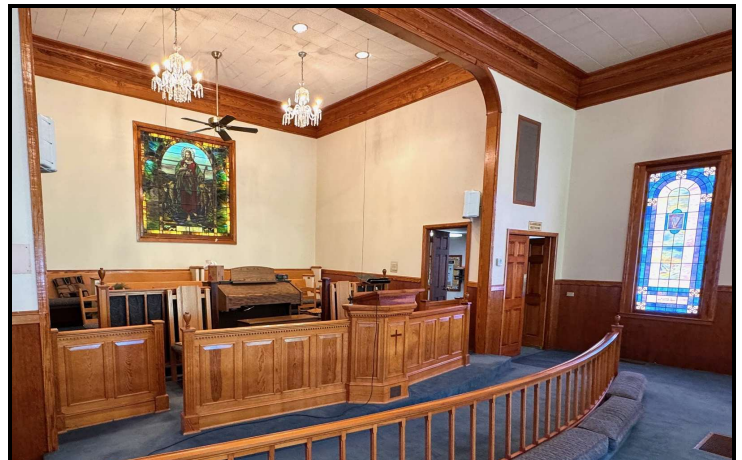
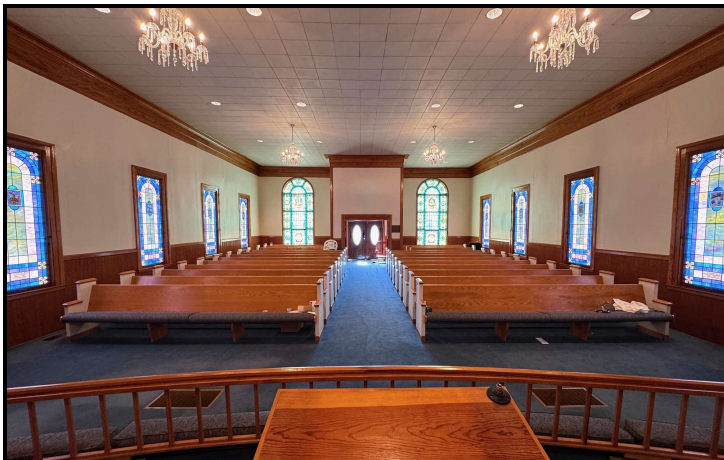
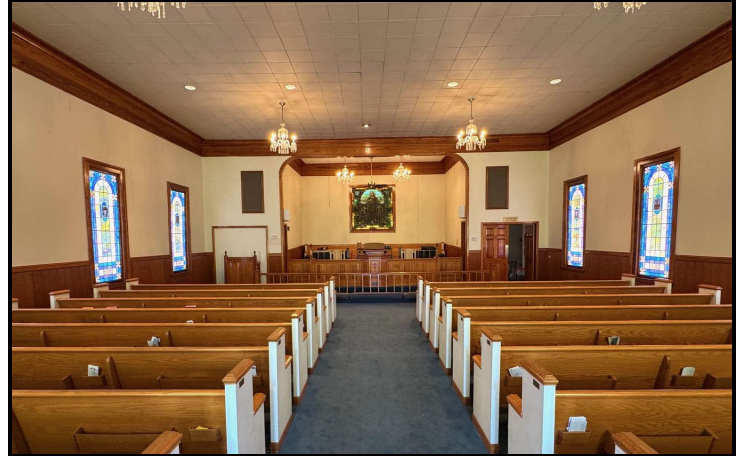
The information contained herein is from other sources believed to be reliable. No independent investigation of the property or the information contained herein has been made, and no representation is made as to the accuracy or completeness thereof. Properties are subject to sale, withdrawal and other sales or rental condition. Terms are subject to errors, and change without notice.

NORTON

ADDITIONAL PHOTOS

3707 Jodeco Rd

MCDONOUGH, GA 30253



For More Information: Patrick Cisco - 404.772.8608

Norton Commercial 434 Green Street Gainesville, GA 30501 nortoncommercial.com

Stephen Lovett

770.297.4807

slovett@nortoncommercial.com

The information contained herein is from other sources believed to be reliable. No independent investigation of the property or the information contained herein has been made, and no representation is made as to the accuracy or completeness thereof. Properties are subject to sale, withdrawal and other sales or rental condition. Terms are subject to errors, and change without notice.

NORTON

ADDITIONAL PHOTOS

3707 Jodeco Rd

MCDONOUGH, GA 30253



For More Information: Patrick Cisco - 404.772.8608

Norton Commercial 434 Green Street Gainesville, GA 30501 nortoncommercial.com

Stephen Lovett

770.297.4807

slovett@nortoncommercial.com

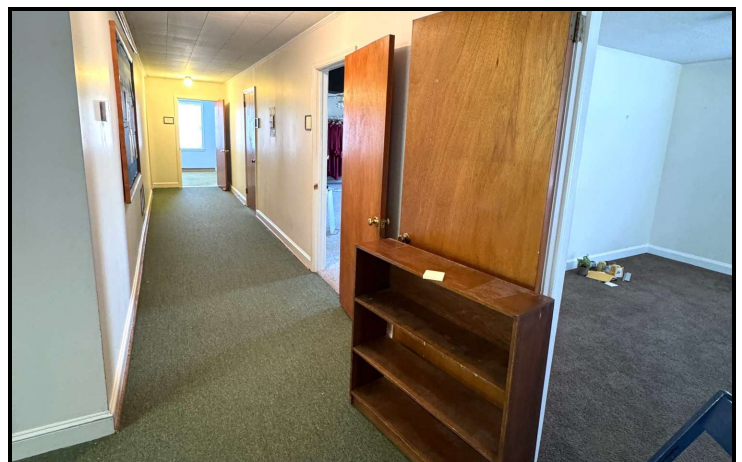
The information contained herein is from other sources believed to be reliable. No independent investigation of the property or the information contained herein has been made, and no representation is made as to the accuracy or completeness thereof. Properties are subject to sale, withdrawal and other sales or rental condition. Terms are subject to errors, and change without notice.

NORTON

ADDITIONAL PHOTOS

3707 Jodeco Rd

MCDONOUGH, GA 30253



For More Information: Patrick Cisco - 404.772.8608

Norton Commercial 434 Green Street Gainesville, GA 30501 nortoncommercial.com

Stephen Lovett

770.297.4807

slovett@nortoncommercial.com

The information contained herein is from other sources believed to be reliable. No independent investigation of the property or the information contained herein has been made, and no representation is made as to the accuracy or completeness thereof. Properties are subject to sale, withdrawal and other sales or rental condition. Terms are subject to errors, and change without notice.

NORTON

ADDITIONAL PHOTOS

3707 Jodeco Rd

MCDONOUGH, GA 30253



For More Information: Patrick Cisco - 404.772.8608

Norton Commercial 434 Green Street Gainesville, GA 30501 nortoncommercial.com

Stephen Lovett

770.297.4807

slovett@nortoncommercial.com

The information contained herein is from other sources believed to be reliable. No independent investigation of the property or the information contained herein has been made, and no representation is made as to the accuracy or completeness thereof. Properties are subject to sale, withdrawal and other sales or rental condition. Terms are subject to errors, and change without notice.

NORTON

ADDITIONAL PHOTOS

3707 Jodeco Rd

MCDONOUGH, GA 30253



For More Information:

Norton Commercial 434 Green Street Gainesville, GA 30501 nortoncommercial.com

Stephen Lovett

770.297.4807

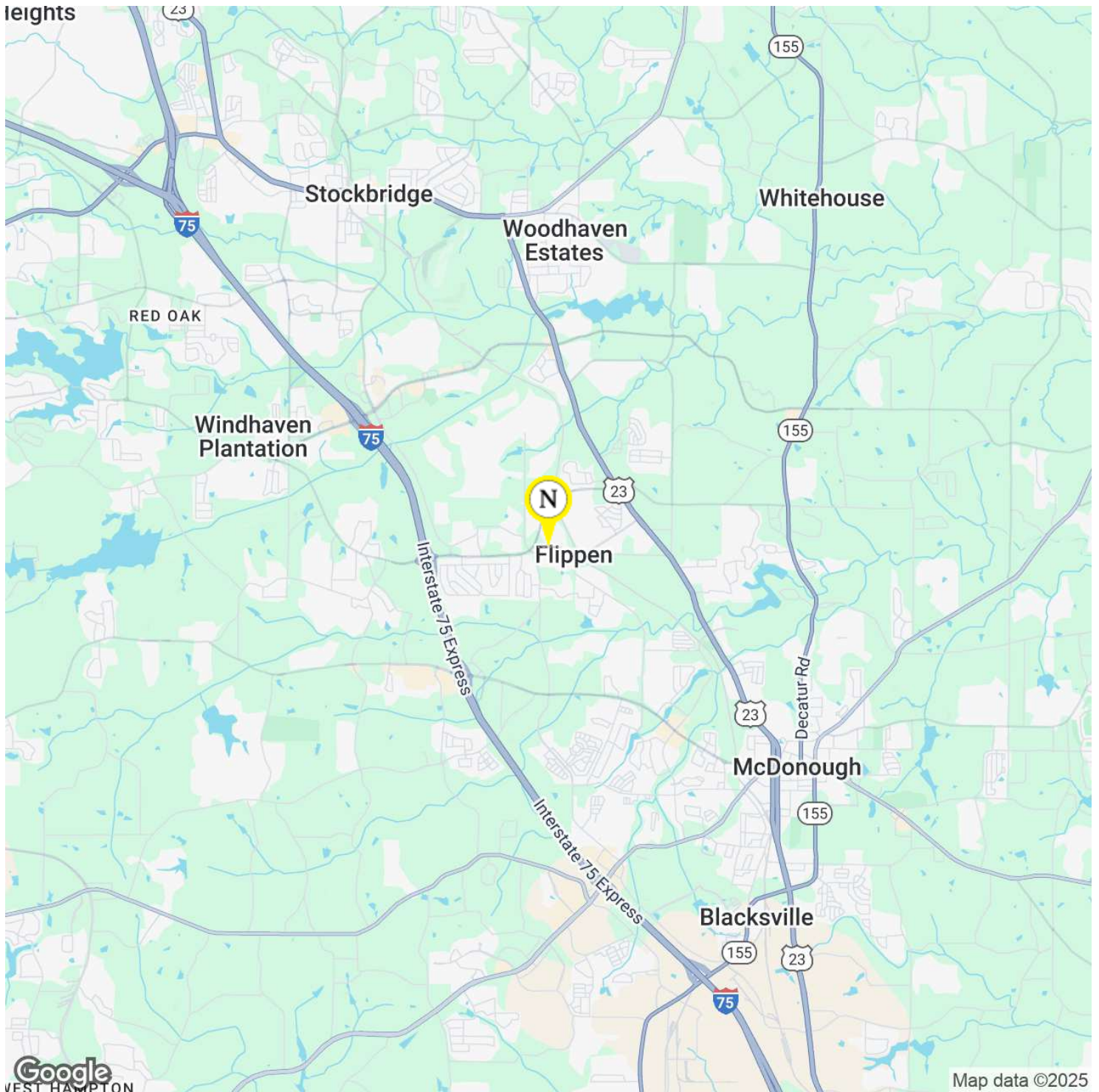
slovett@nortoncommercial.com

The information contained herein is from other sources believed to be reliable. No independent investigation of the property or the information contained herein has been made, and no representation is made as to the accuracy or completeness thereof. Properties are subject to sale, withdrawal and other sales or rental condition. Terms are subject to errors, and change without notice.

NORTON

3707 Jodeco Rd

MCDONOUGH, GA 30253



For More Information: Patrick Cisco - 404.772.8608

Norton Commercial 434 Green Street Gainesville, GA 30501 nortoncommercial.com

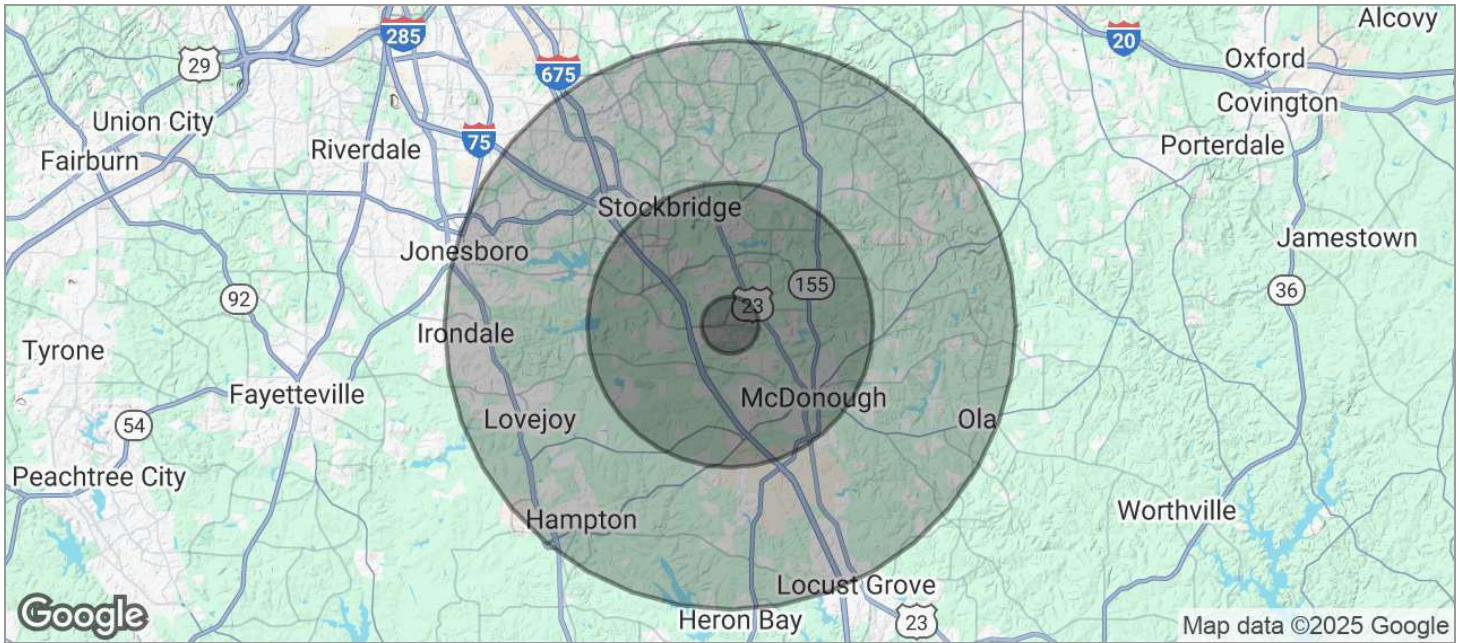
Stephen Lovett

770.297.4807

slovett@nortoncommercial.com

The information contained herein is from other sources believed to be reliable. No independent investigation of the property or the information contained herein has been made, and no representation is made as to the accuracy or completeness thereof. Properties are subject to sale, withdrawal and other sales or rental condition. Terms are subject to errors, and change without notice.

NORTON



POPULATION	1 MILE	5 MILES	10 MILES
TOTAL POPULATION	5,430	100,387	330,862
MEDIAN AGE	39	39	39
MEDIAN AGE (MALE)	37	37	38
MEDIAN AGE (FEMALE)	40	40	40
HOUSEHOLDS & INCOME	1 MILE	5 MILES	10 MILES
TOTAL HOUSEHOLDS	1,818	35,932	114,735
# OF PERSONS PER HH	3	2.8	2.9
AVERAGE HH INCOME	\$111,303	\$94,772	\$93,555
AVERAGE HOUSE VALUE	\$360,935	\$295,958	\$285,830

* Demographic data derived from 2020 ACS - US Census

For More Information: Patrick Cisco - 404.772.8608

Norton Commercial 434 Green Street Gainesville, GA 30501 nortoncommercial.com

Stephen Lovett

770.297.4807

slovett@nortoncommercial.com

The information contained herein is from other sources believed to be reliable. No independent investigation of the property or the information contained herein has been made, and no representation is made as to the accuracy or completeness thereof. Properties are subject to sale, withdrawal and other sales or rental condition. Terms are subject to errors, and change without notice.

NORTON