

## 880-888 TOWN CENTER DRIVE | LANGHORNE, PA 19047

The Flynn Company | 1621 Wood Street, Philadelphia, PA 19103 | Phone (215) 561-6565 | www.flynnco.com | info@flynnco.com

### FOR LEASE

- 42,000 SF building
- Built in 1991
- Two Suites Available:
  - 5,300 SF office
  - 6,045 SF office
- Loading can be created



### PROPERTY DETAILS

**Ceiling Height:** 18' clear

**Parking:** Four (4) cars per 1,000 SF

**Sprinkler:** Fully sprinklered, wet system

**HVAC:** Fully air-conditioned with rooftop package units



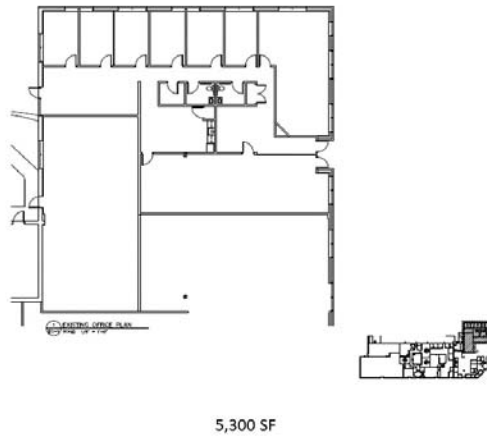
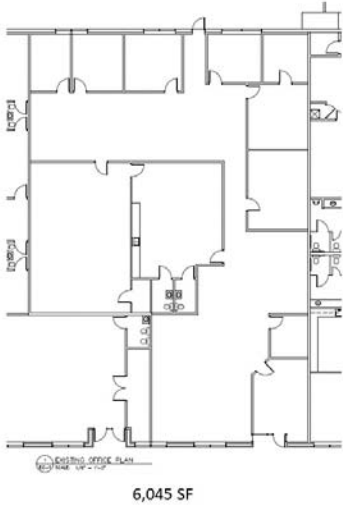
EXCLUSIVELY OFFERED BY:  
**The Flynn Company**

Mike Borski, Sr.  
215-561-6565 x120  
mborski@flynnco.com

Brian Glancey, SIOR  
215-561-6565 x191  
bglancey@flynnco.com

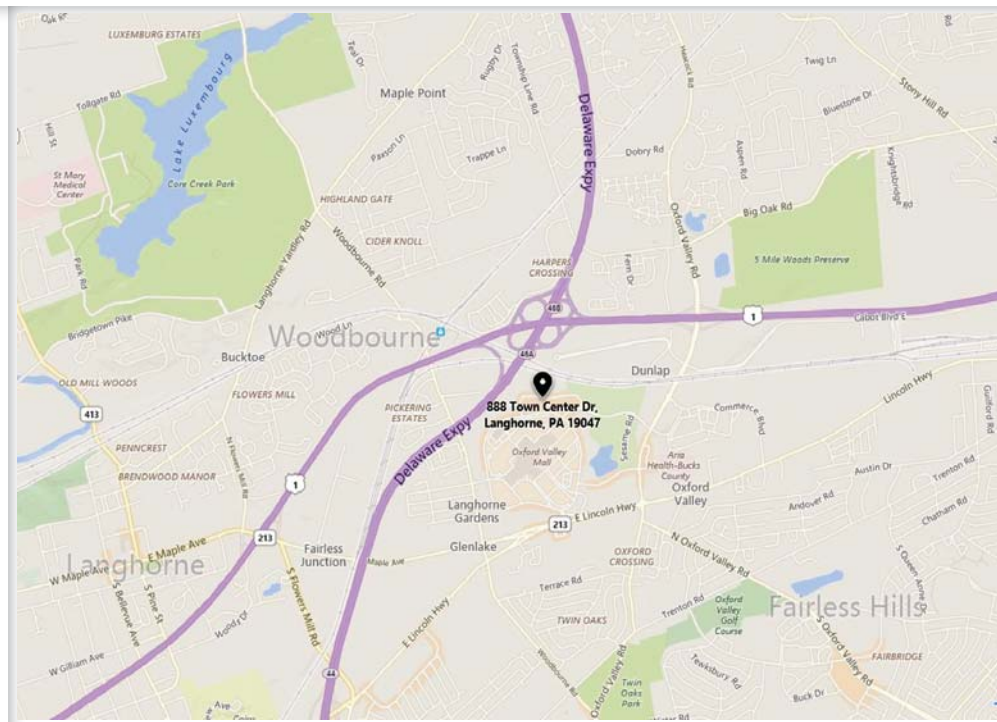
## 880-888 Town Center Drive | Langhorne, PA 19047

### FLOOR PLAN



### LOCATION

- Located minutes from Route 1 and I-95.
- Directly across from the Oxford Valley Mall.



EXCLUSIVELY OFFERED BY:  
**The Flynn Company**

Michael Borski, Sr.  
215-561-6565 x120  
mborski@flynnco.com

Brian Glancey, SIOR  
215-561-6565 x191  
bglancey@flynnco.com