

# 7 Galaxy Way, Woodstock, IL

## FOR SALE: 1.84 Acres of Land



### Lake Shore Business Park

## Prime Industrial Development Site in Enterprise Zone

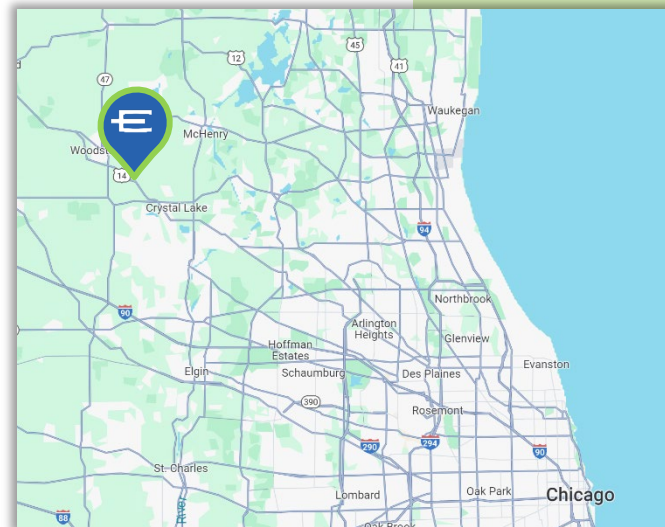
- Premier development site in a business park setting
- Utilities to site. Graded lot with offsite retention.
- Potential industrial, office or commercial development site
- Attractive M-1 zoning that allows for many use types
- Can accommodate 10,000 – 17,000 SF building
- Located in [McHenry County Enterprise Zone](#) – offers significant development incentives and cost savings

AVAILABLE: 1.84 Acres

ZONING: M-1

PIN: 13-22-104-001

SALE PRICE: \$200,000



SCAN/CLICK FOR  
MAP



**ENTRE**  
Commercial Realty LLC

Sam Deihls  
847-714-3324  
sdeihls@entreccommercial.com

John M. Joyce  
847-612-0464  
jjoyce@entreccommercial.com

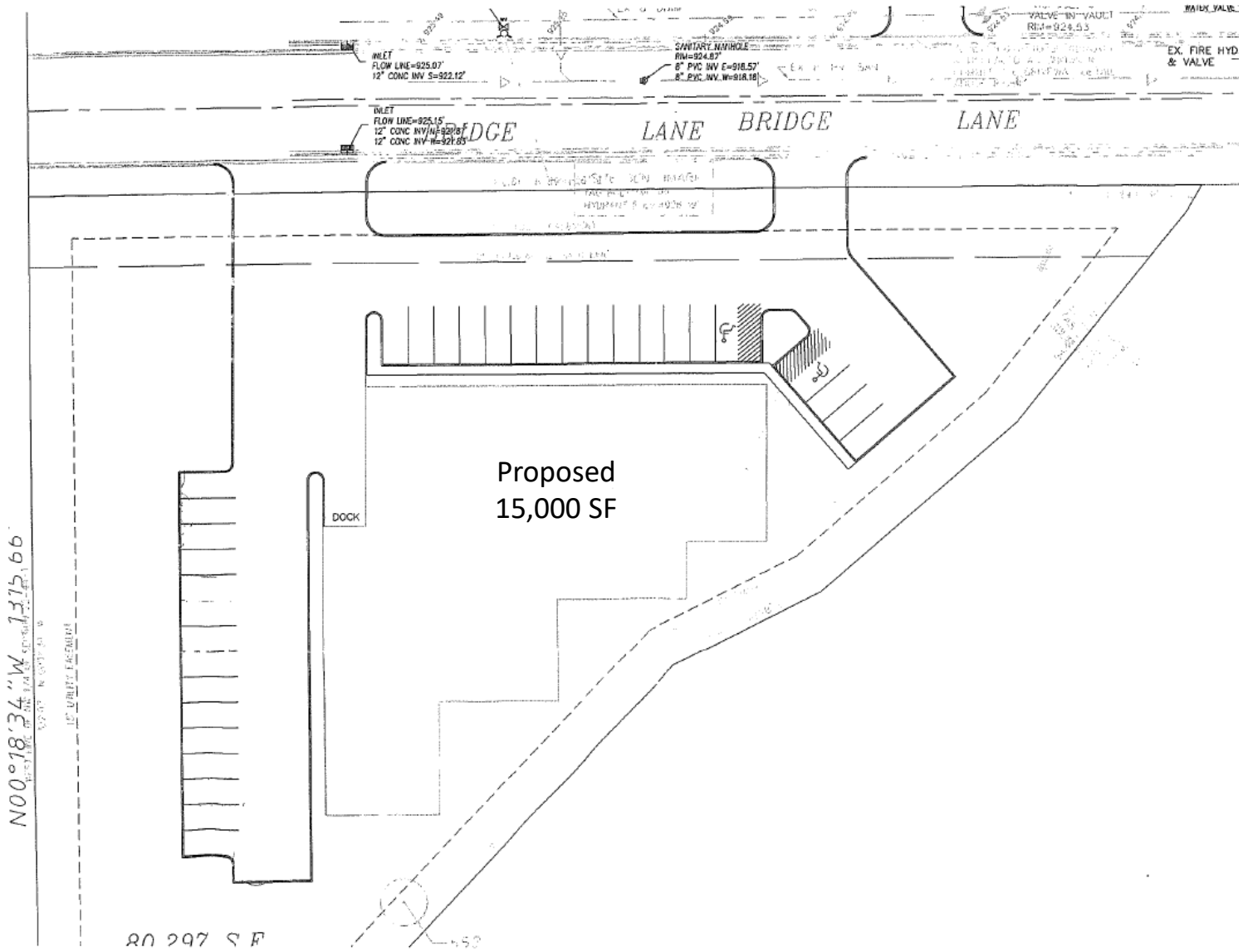


# PHOTOS

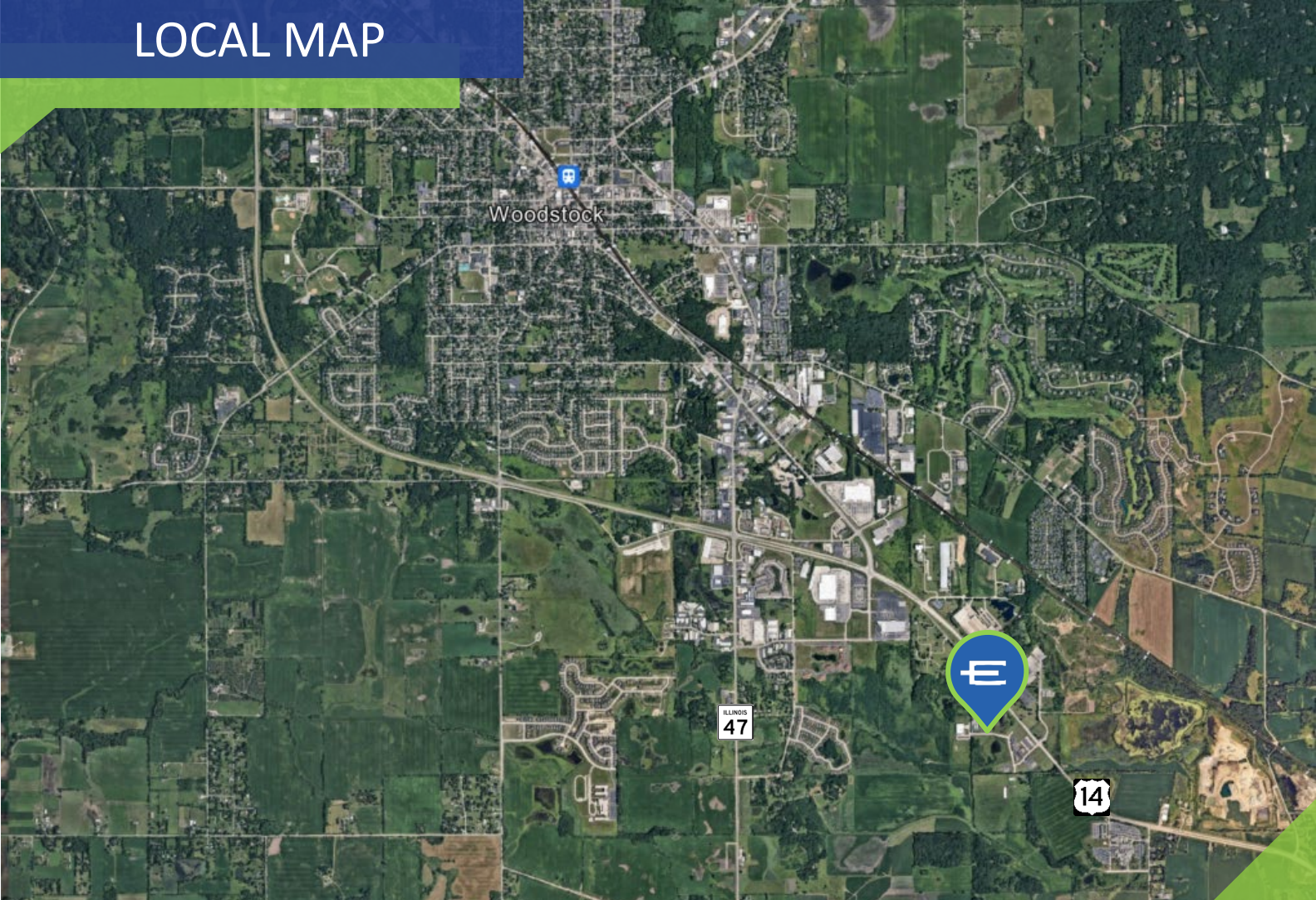




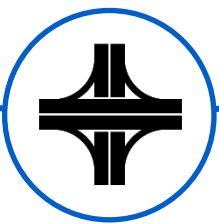
# SITE PLAN



# LOCAL MAP



SCAN FOR MAP VIEW



Near US 14 and Route 47



McHenry County  
Enterprise Zone



Premier Business Park  
Setting

**ENTRE**  
Commercial Realty LLC

Sam Deihls  
847-714-3324  
sdeihls@entreccommercial.com

John M. Joyce  
847-612-0464  
jjoyce@entreccommercial.com