

Office/Medical Office | For Sublease

**CBRE**

# 1030 Leigh Ave

San Jose, CA 95126  
[www.cbre.com](http://www.cbre.com)

±7,200 SF



# Floor Plan

1030 Leigh Ave  
San Jose, CA 95126

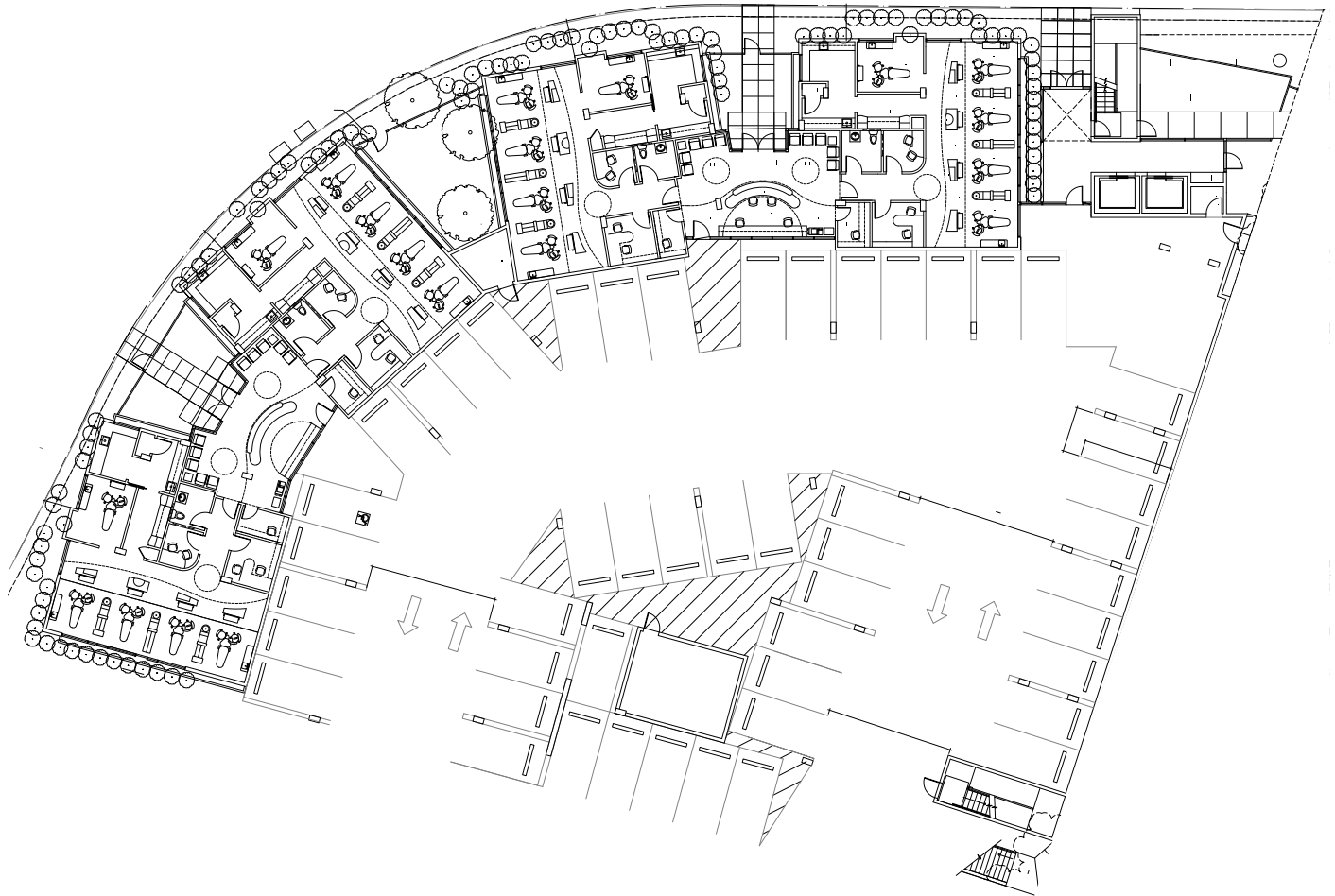


## Property Highlights

- + Office / Medical Office For Sublease
- + Willow Glen
- + 7,200 SF - Divisible to 1,800 SF
- + Covered and Secure Parking
- + Medical and Dental Uses
- + 2021 Construction
- + Close to Amenities
- + Long-Term Deals Available

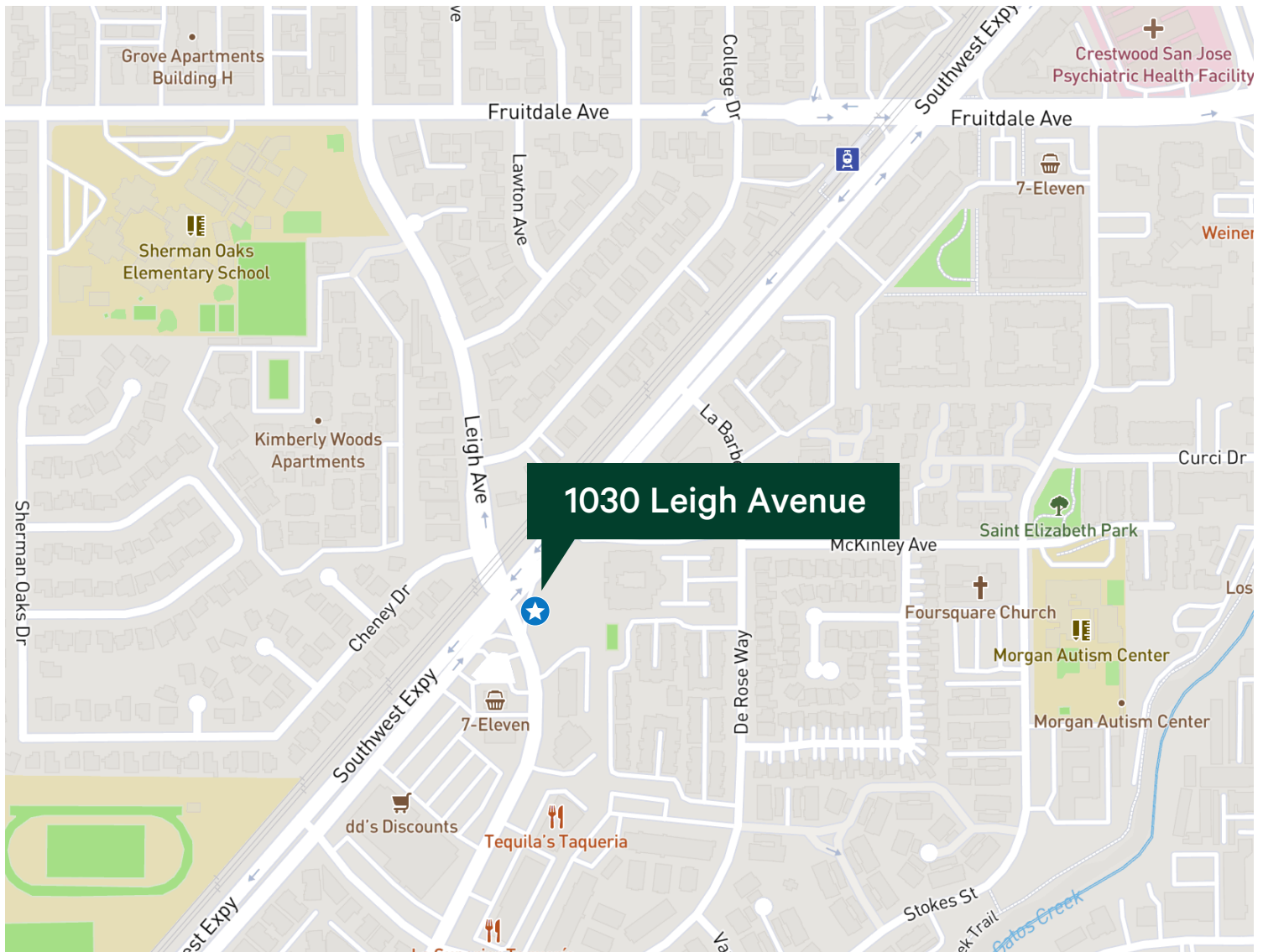
# Hypothetical Floor Plan

1030 Leigh Ave  
San Jose, CA 95126



# Map

1030 Leigh Ave  
San Jose, CA 95126



## Contact Us

### Paul Lyles

First Vice President  
+1 408 453 7443  
paul.lyles@cbre.com  
Lic. 01236021

### Thor Wiles

Vice President  
+1 408 453 7478  
thor.wiles@cbre.com  
Lic. 01237980

© 2023 CBRE, Inc. All rights reserved. This information has been obtained from sources believed reliable but has not been verified for accuracy or completeness. CBRE, Inc. makes no guarantee, representation or warranty and accepts no responsibility or liability as to the accuracy, completeness, or reliability of the information contained herein. You should conduct a careful, independent investigation of the property and verify all information. Any reliance on this information is solely at your own risk. CBRE and the CBRE logo are service marks of CBRE, Inc. All other marks displayed on this document are the property of their respective owners, and the use of such marks does not imply any affiliation with or endorsement of CBRE. Photos herein are the property of their respective owners. Use of these images without the express written consent of the owner is prohibited.

[www.cbre.com](http://www.cbre.com)

**CBRE**