

# 16750 Main Street, Eden Prairie

## FOR LEASE

RETAIL / MEDICAL / OFFICE / FITNESS



# AVAILABLE NOW!

## High Visibility Space on Hwy 5

- 1,523 SF with dedicated entrance in rear of building
- Building signage on Hwy 5
- Raw space ready for new buildout
- Strong demographics / high exposure location



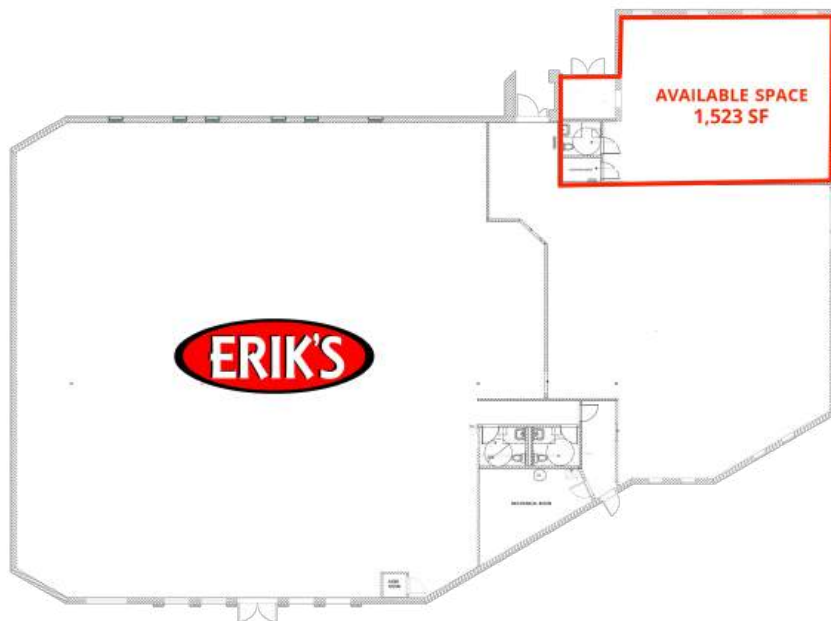
CONTACT BROKER FOR INFORMATION & TOUR

Ted LaFave • 612.875.3858 • [tlafave@grandrea.com](mailto:tlafave@grandrea.com) • [www.grandrea.com](http://www.grandrea.com)

**GRAND**  
REAL ESTATE ADVISORS

# FOR LEASE | 16750 Main Street • Eden Prairie, MN 55346

- \$3,500 per month gross rent. Includes all expenses and utilities.
- Tenant improvement allowance available
- Ample parking on site
- 200 amp electrical service
- Co-Tenants: Erik's Bikes and Boards; Bank of America



CONTACT BROKER FOR INFORMATION & TOUR

Ted LaFave • 612.875.3858 • tlafave@grandrea.com • www.grandrea.com

**GRAND**  
REAL ESTATE ADVISORS

# FOR LEASE | 16750 Main Street • Eden Prairie, MN 55346

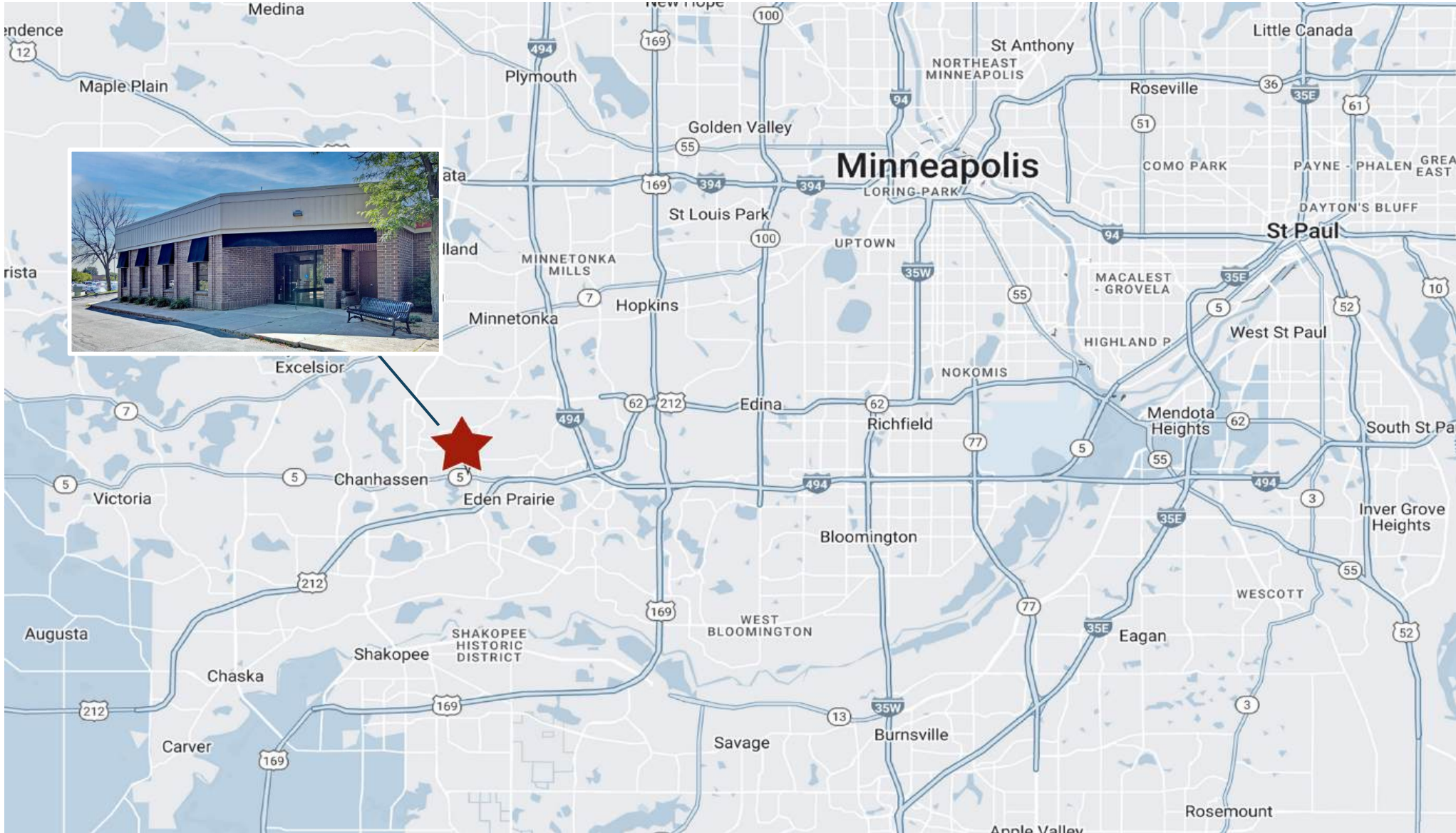


CONTACT BROKER FOR INFORMATION & TOUR

Ted LaFave • 612.875.3858 • tlafave@grandrea.com • www.grandrea.com

**GRAND**  
REAL ESTATE ADVISORS

# FOR LEASE | 16750 Main Street • Eden Prairie, MN 55346



CONTACT BROKER FOR INFORMATION & TOUR

Ted LaFave • 612.875.3858 • tlafave@grandrea.com • www.grandrea.com

**GRAND**  
REAL ESTATE ADVISORS