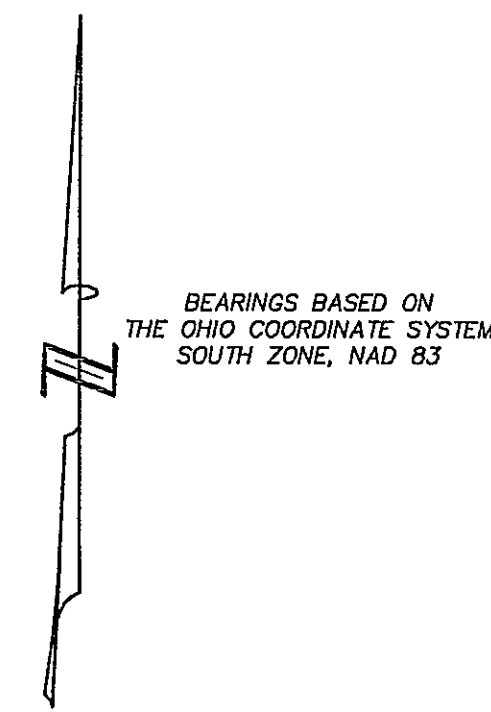
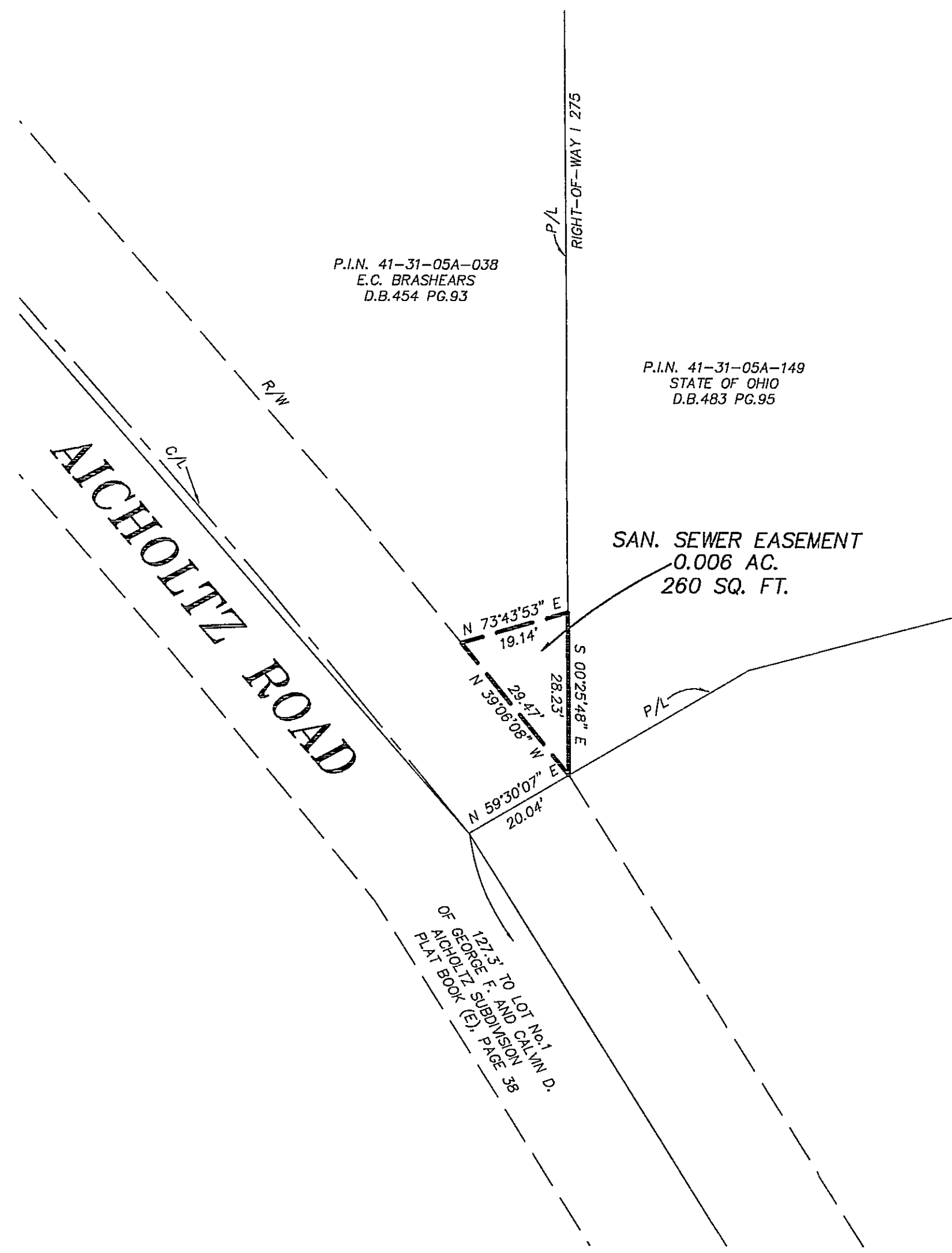


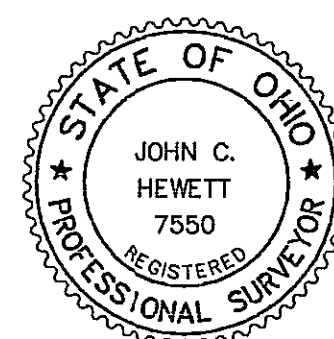
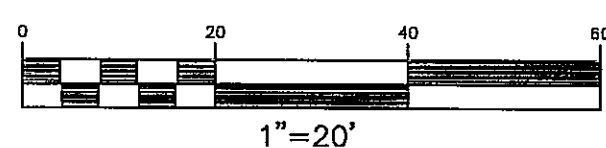
P.I.N. NO.  
41-31-05A-038

**TL87.0003E**

MAY 13 2003



**PLAT OF EASEMENT  
IN  
MATTHEW'S MILITARY SURVEY No. 1138  
UNION TOWNSHIP  
CLERMONT COUNTY, OHIO**



**SURVEYOR'S CERTIFICATION**

I hereby certify that this plat represents a true and complete survey made under my supervision.

*John C. Hewett*  
JOHN C. HEWETT  
Surveyor Number 7550

<b>PLAT OF EASEMENT</b>				
<b>H &amp; M SURVEYING</b> SERVICES INCORPORATED 119 WEST MAIN STREET AMELIA, OHIO 45102 (513) 753-7959				
SCALE 1"=20'	DATE 3/5/08	JOB NO. 08012	DRWN. D.S.M.	1/1