

For Sale

450 WEST CITRUS STREET

COLTON, CA

*±70,000 SF Religious/Educational
Facility Situated on ±5.72 Acres*



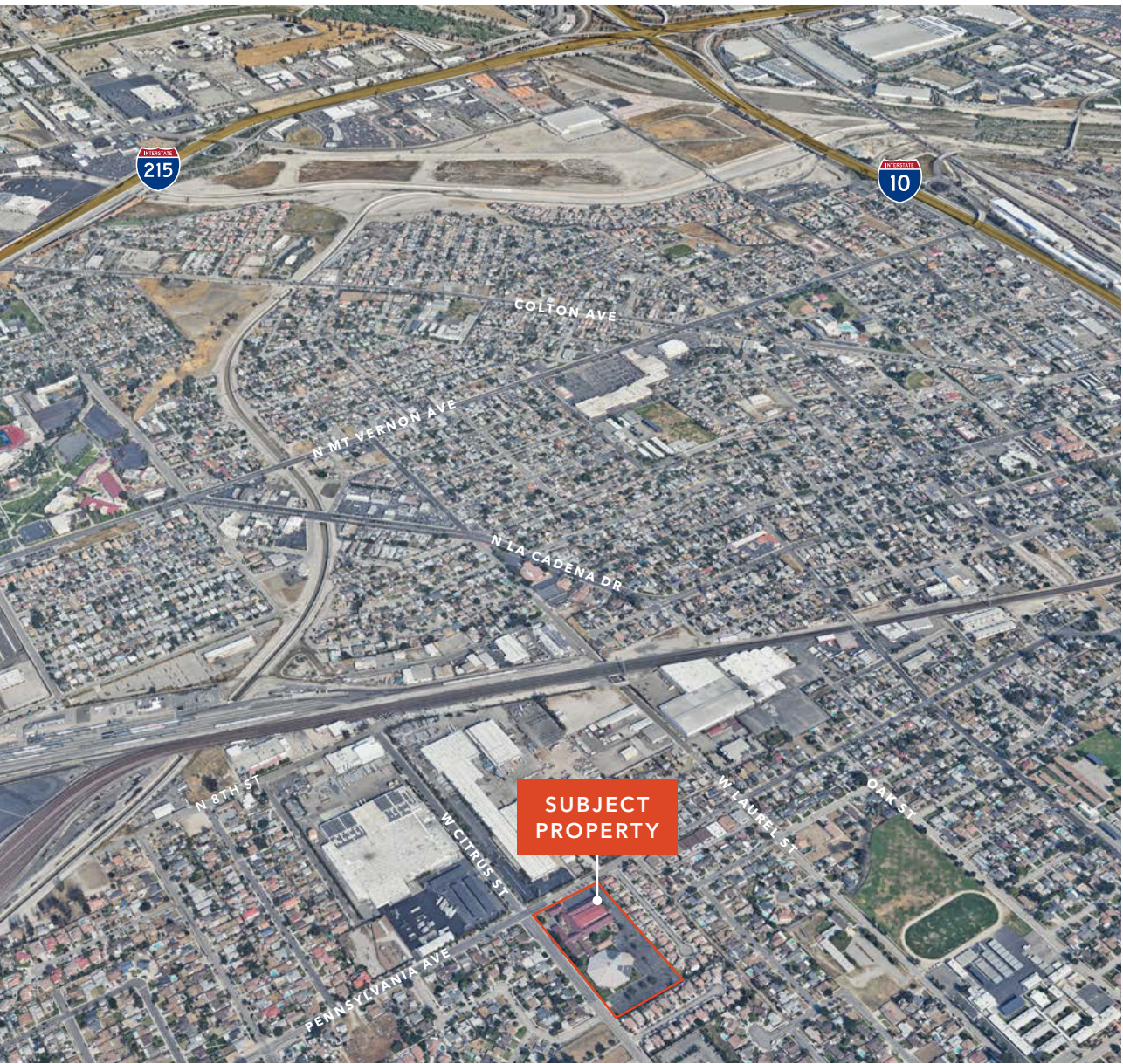
Exclusively listed by

ERIC KNOWLES
213.660.9337
eric.knowles@kidder.com
LIC N° 00944210

ROBERT FLETCHER
213.225.7246
robert.fletcher@kidder.com
LIC N° 01706060

KIDDER.COM

km Kidder
Mathews



Unique opportunity to develop or acquire an existing, well-located religious-education facility adjacent to I-10 & I-215

TOTAL BUILDING SF (100% IMPROVED)	±70,000 SF
GROSS LAND SF	±5.72 AC
MAIN SANCTUARY	±999 people
FELLOWSHIP HALL	±500 people
KITCHEN	Commercial
FEATURES	Classrooms, offices, small to large meeting rooms, and storage spaces throughout
PARKING LOT	±220 spaces
LOCATION	Conveniently near I-10 and I-215
APN	0160-221-02 & 0160-221-24
SALE PRICE	\$7,500,000

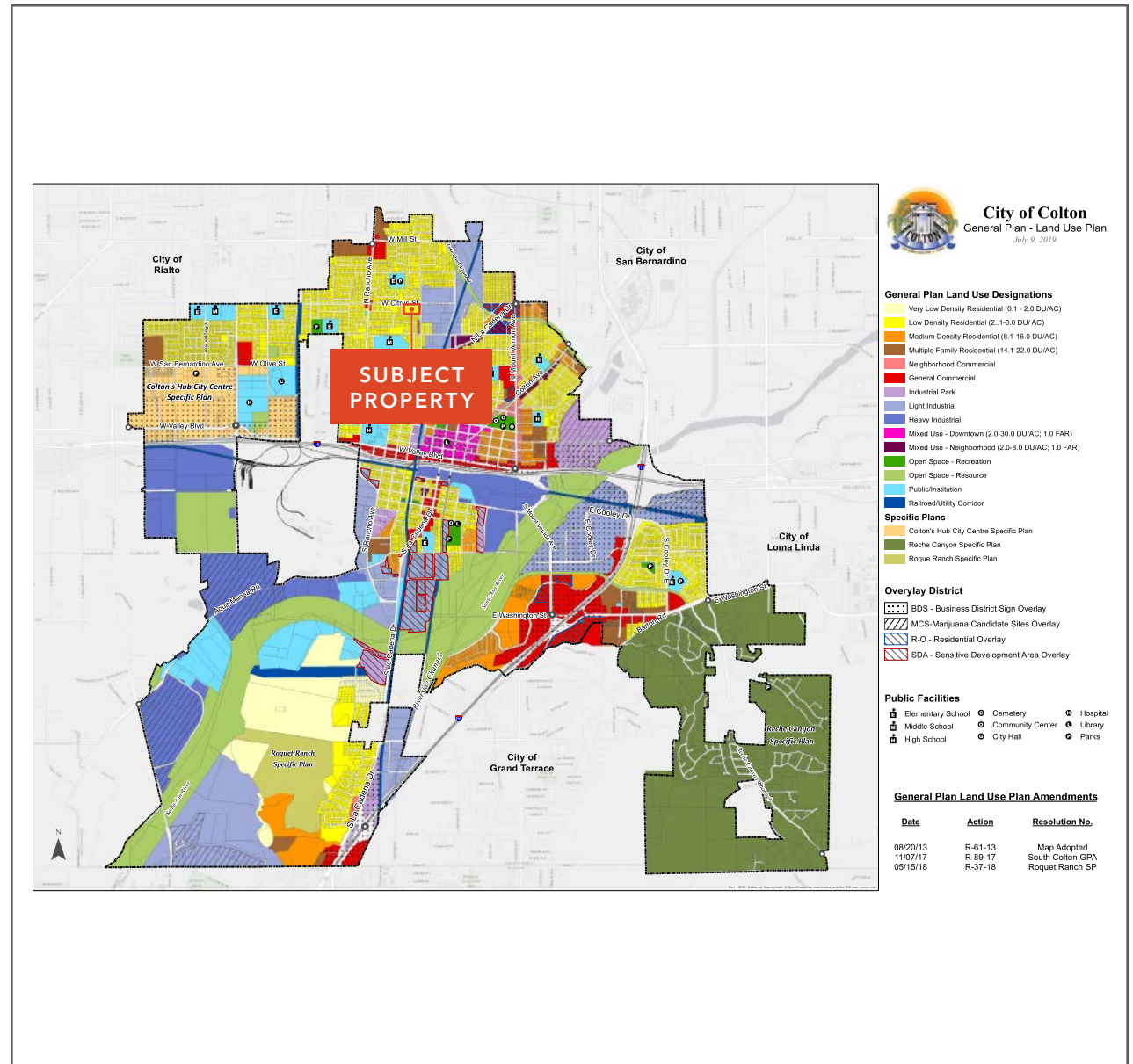
ZONING & GENERAL PLAN

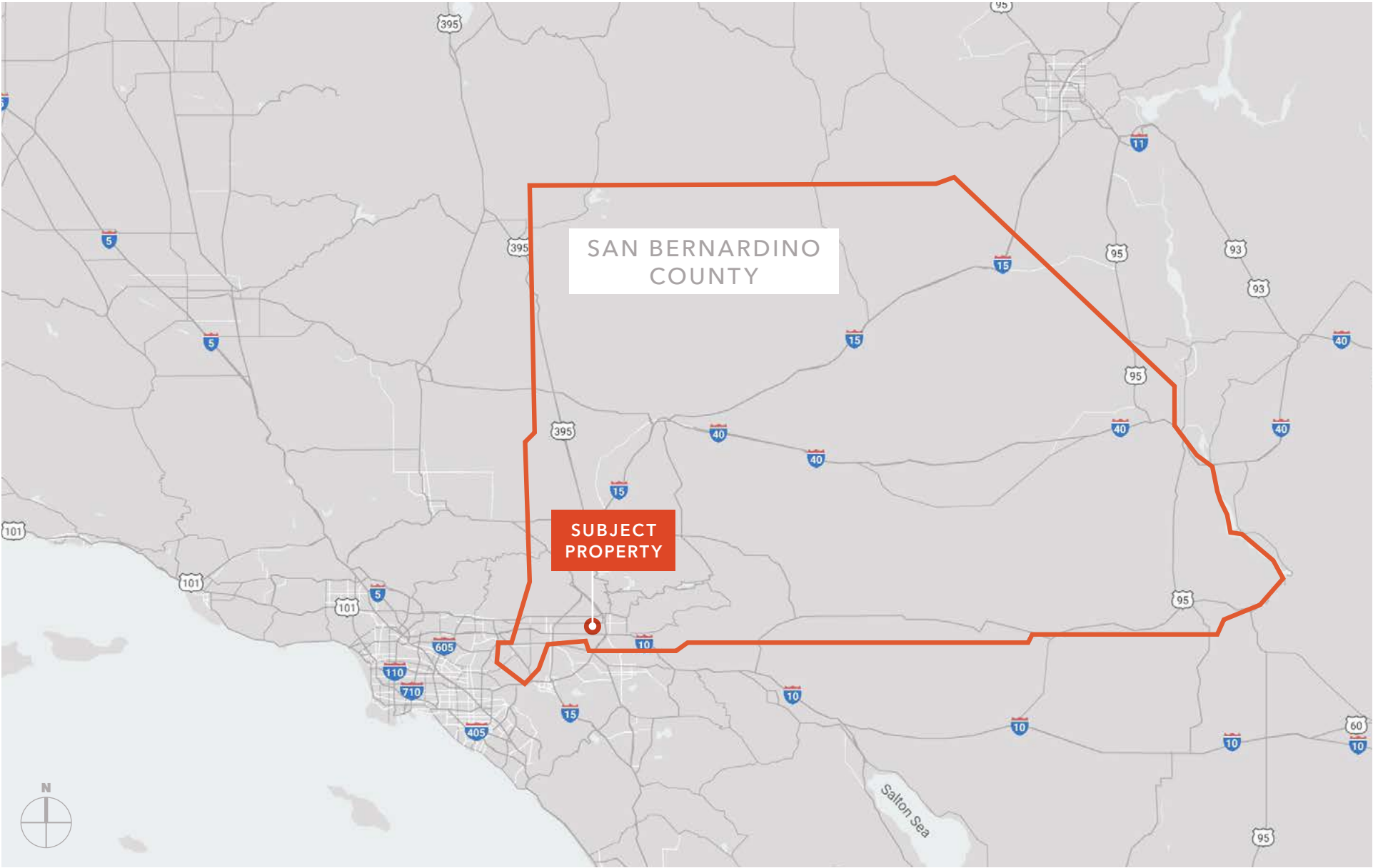
R-1 Low Density Residential

The R-1 Low Density Residential Zone is characterized generally by single-family detached homes on individual lots that form a cohesive neighborhood, residential subdivisions in this category are similar to those found in many of Colton's established residential tracts. Within this designation, clustering of dwelling units may be allowed through the discretionary permit process to provide additional opportunity for a diversity of housing types, architectural styles, and common open space areas. New development must be compatible and similar in character to the surrounding residential neighborhoods within this designation. This zone has a minimum lot size of 7,200 square feet.

Obvious Permitted, Development Permitted and Conditionally Permitted Uses include:

Cluster Development
Educational Institutions
Religious Assembly
Manufactured Homes
Accessory Dwelling Units





INLAND EMPIRE



RIDGECREST



BAKER

LAUGHLIN

CALIFORNIA CITY

MOJAVE NATIONAL
PRESERVE

EDWARDS AIR
FORCE BASE

BARSTOW



LANCASTER

VICTORVILLE

SUBJECT
PROPERTY



LOS ANGELES

SAN BERNARDINO



RIVERSIDE



LONG BEACH



PALM SPRINGS



BLYTHE



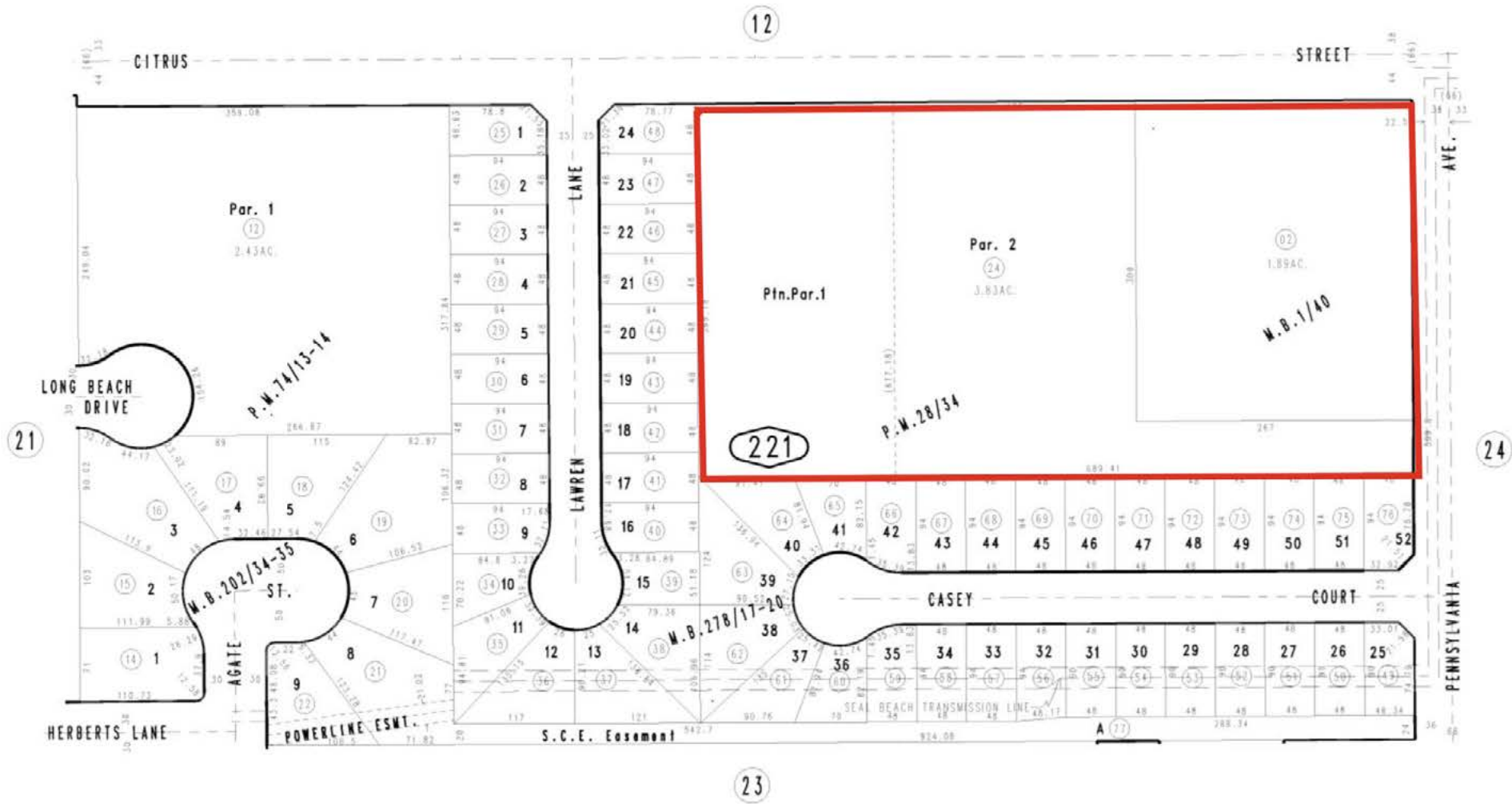
HUNTINGTON BEACH

MURRIETA

AVAILABLE FOR SALE

KIDDER MATHEWS

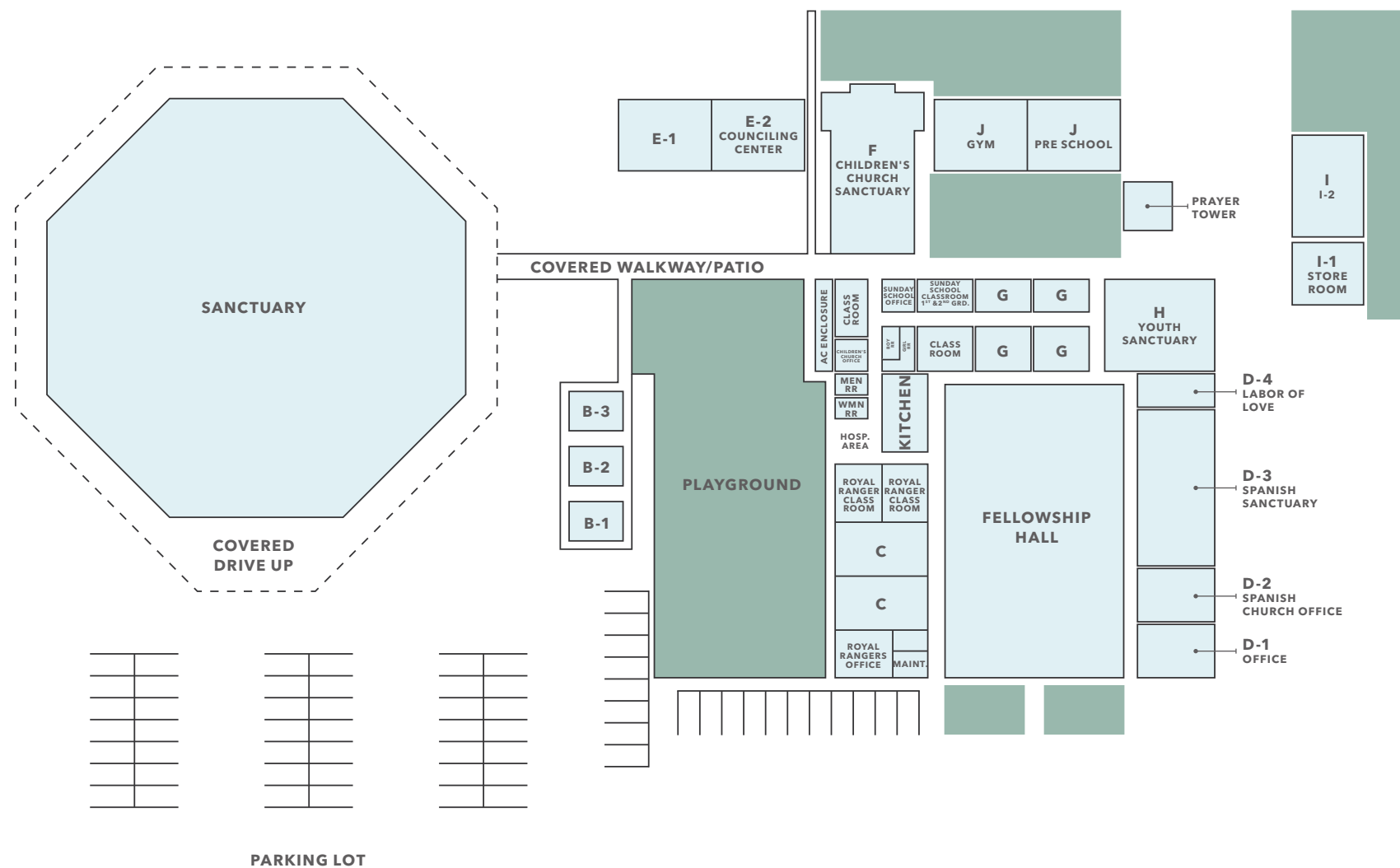
PLAT MAP

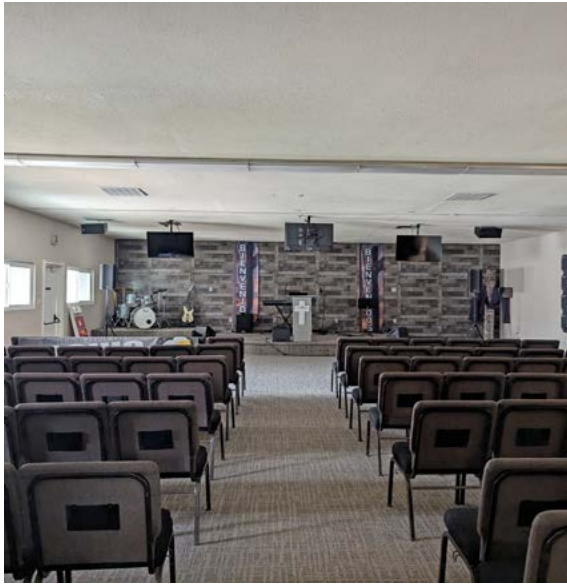


SITE MAP



SITE PLAN





450 WEST CITRUS STREET



AVAILABLE FOR SALE

KIDDER MATHEWS

450 WEST CITRUS STREET



Exclusively listed by

ERIC KNOWLES
213.660.9337
eric.knowles@kidder.com
LIC N° 00944210

ROBERT FLETCHER
213.225.7246
robert.fletcher@kidder.com
LIC N° 01706060

KIDDER.COM

This information supplied herein is from sources we deem reliable. It is provided without any representation, warranty, or guarantee, expressed or implied as to its accuracy. Prospective Buyer or Tenant should conduct an independent investigation and verification of all matters deemed to be material, including, but not limited to, statements of income and expenses. Consult your attorney, accountant, or other professional advisor. All Kidder Mathews designs are the sole property of Kidder Mathews. Branded materials and layouts are not authorized for use by any other firm or person.

