

# THE FOUNTAINS BUSINESS PARK

## 3031 W MARCH LANE, STE. 120-S

STOCKTON, CALIFORNIA

±1,300 SF OFFICE CONDOMINIUM SUITE

FOR SALE \$375,000.00



FOR MORE INFORMATION  
CONTACT:

**LIDDICOAT**  
Corp. Lic. 02305797



**LORIE LIDDICOAT**

209.915.9913

Lic. 01952818

Lorie@LiddicoatCRE.com

*All information found in this marketing package have been gathered from resources believed to be reliable. Brokers and Agents do not warrant, guarantee or represent the accuracy of the Information and recommend that all information be verified prior to a transaction.*

**3031 W. MARCH LANE, STE.120-S:**

**PROPERTY FEATURES:**

APN:116-250-050  
Zoned: CO – City of Stockton  
Well, maintained Common Areas  
Estimated HOA: \$548 per month

**OFFICE DETAILS:**

- ±1,300 SF
- Reception Area w/ Open workspace
- Conference Room w/ Built-In Law Library and skylight.
- Restroom within Suite
- Two Large Offices
- Copy Station w/ Cabinets for storage
- File room that can be used as a break room
- An Abundance of Windows throughout bringing in natural lighting to each workspace.

Rare opportunity! Second floor corner suite overlooking March Lane with views of the beautiful well-maintained fountains. Stair well and Elevator both lead to the second-floor unit. Windows throughout the suite bringing in plenty of natural lighting. Extremely functional layout for many professional office uses. Suite is easy to find with Ample parking near by.



**FOR MORE INFORMATION CONTACT:**

**LIDDICOAT**  
Corp. Lic. 02305797



**LORIE LIDDICOAT**  
209.915.9913  
Lic. 01952818  
Lorie@LiddicoatCRE.com

*All information found in this marketing package have been gathered from resources believed to be reliable. Brokers and Agents do not warrant, guarantee or represent the accuracy of the information and recommend that all information be verified prior to a transaction.*

3031 W. MARCH LANE, STE. 120-S



FOR MORE INFORMATION  
CONTACT:

**LIDDICOAT**  
Corp. Lic. 02305797



**LORIE LIDDICOAT**  
209.915.9913  
Lic. 01952818  
Lorie@LiddicoatCRE.com

*All information found in this marketing package have been gathered from resources believed to be reliable. Brokers and Agents do not warrant, guarantee or represent the accuracy of the Information and recommend that all information be verified prior to a transaction.*

3031 W. MARCH LANE, STE.120-S - INTERIOR PHOTOS



FOR MORE INFORMATION  
CONTACT:

**LIDDICOAT**  
Corp. Lic. 02305797



**LORIE LIDDICOAT**  
209.915.9913  
Lic. 01952818  
Lorie@LiddicoatCRE.com

*All information found in this marketing package have been gathered from resources believed to be reliable. Brokers and Agents do not warrant, guarantee or represent the accuracy of the information and recommend that all information be verified prior to a transaction.*

3031 W. MARCH LANE, STE. 120-S- EXTERIOR PHOTOS/ COMMON AREAS



FOR MORE INFORMATION  
CONTACT:

**LIDDICOAT**  
Corp. Lic. 02305797

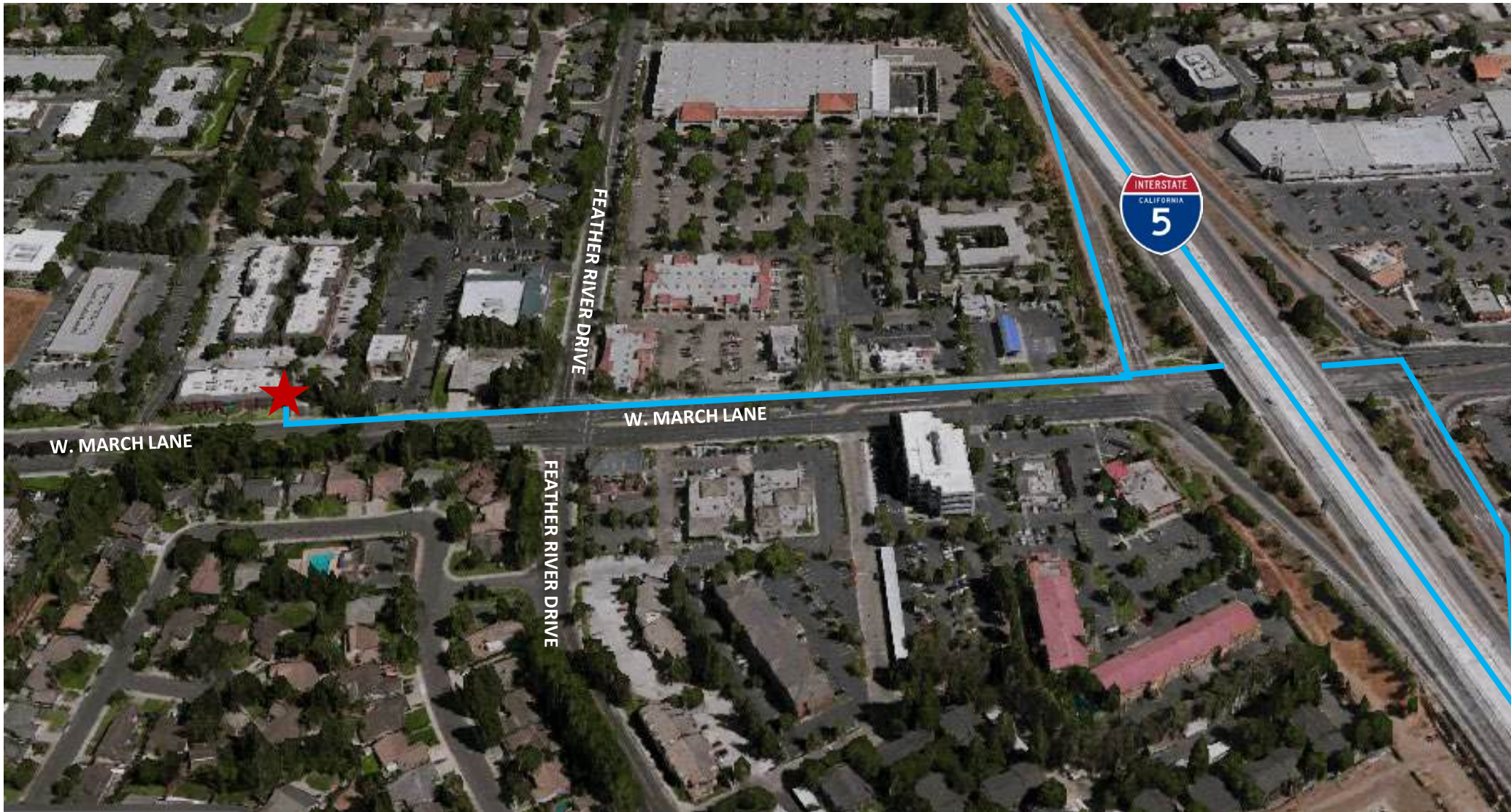


**LORIE LIDDICOAT**  
209.915.9913  
Lic. 01952818  
Lorie@LiddicoatCRE.com

*All information found in this marketing package have been gathered from resources believed to be reliable. Brokers and Agents do not warrant, guarantee or represent the accuracy of the information and recommend that all information be verified prior to a transaction.*



# 3031 W. MARCH LANE, STE.120-S –VICINITY MAP



FOR MORE INFORMATION  
CONTACT:

**LIDDICOAT**  
Corp. Lic. 02305797



**LORIE LIDDICOAT**  
209.915.9913  
Lic. 01952818  
Lorie@LiddicoatCRE.com

*All information found in this marketing package have been gathered from resources believed to be reliable. Brokers and Agents do not warrant, guarantee or represent the accuracy of the information and recommend that all information be verified prior to a transaction.*