

MARKETING PROFILE

UNIVERSITY PLACE

575 E. UNIVERSITY PARKWAY | OREM, UT

NICOLE VANLAECKEN

303.704.9010

nicolev@woodburycorp.com





AN ECOSYSTEM OF LIVE-WORK-SHOP-PLAY



THE EPICENTER OF THE YOUNGEST AND 2ND FASTEST GROWING STATE

MARKET DYNAMICS

- State of Utah
 - 2nd Fastest growing state in America
 - Youngest state in America
 - Outdoor Recreation Mecca of America
- Utah County
 - Highest birth rate in America
 - Projected to grow by 1 million people over next 40 years
- Orem-Provo
 - #1 Best Performing City⁽¹⁾
 - #1 City for Job Growth⁽²⁾
 - #1 City for Tech Employment⁽²⁾



DEMOGRAPHICS	10-MIN	20-MIN	30-MIN
Population	343,557	643,739	718,755
Households	99,327	110,373	175,016
Average HH Income	\$82,482	\$85,102	\$90,378

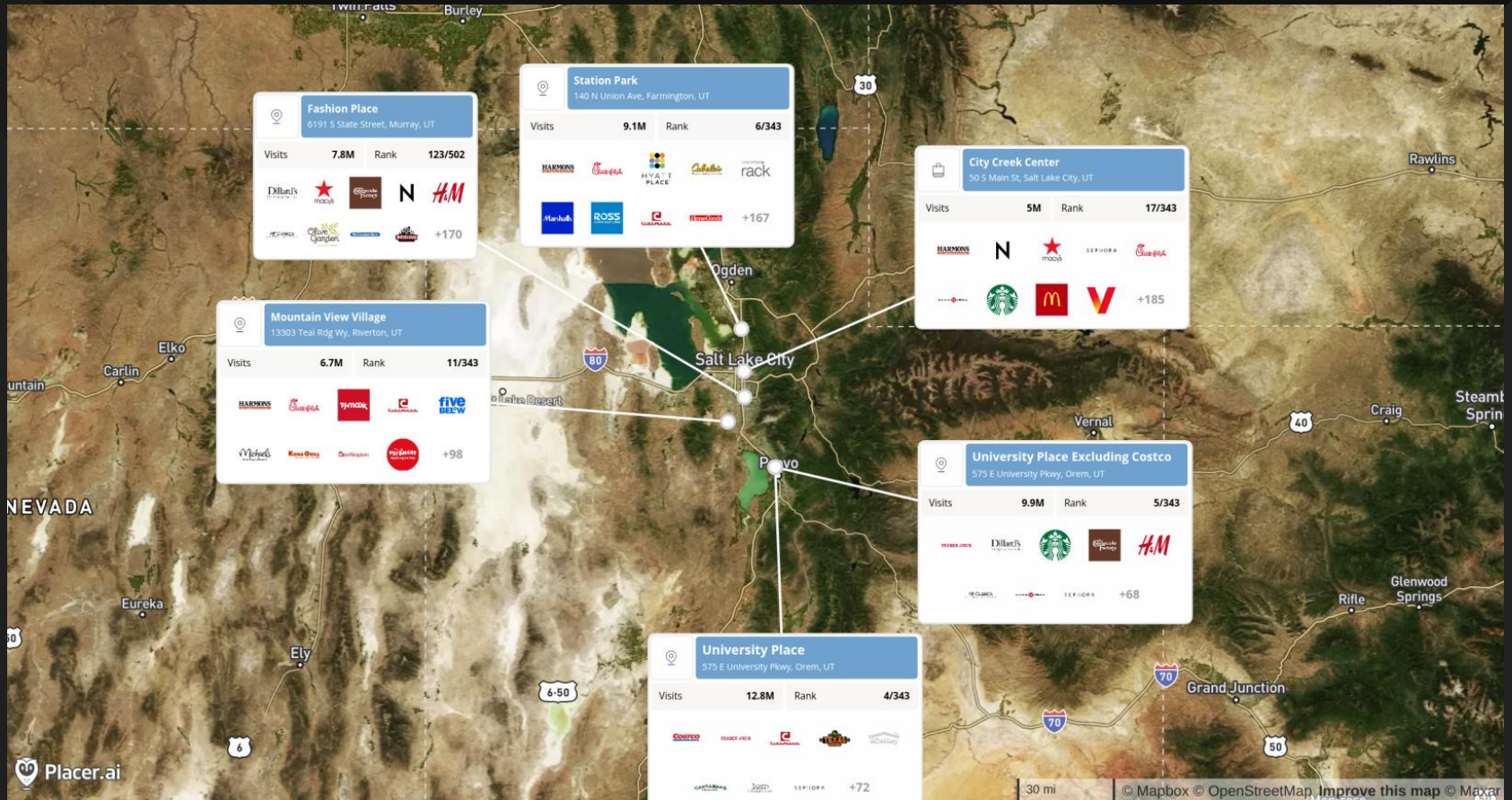
TRAFFIC	State Street	University	Total
AADT	47,000	57,000	104,000

(1) The Milken Institute

(2) Forbes

(3) US News

SHOPPING CENTER RANKING MAP



UNIVERSITY PLACE | 575 E. UNIVERSITY PARKWAY | OREM, UT

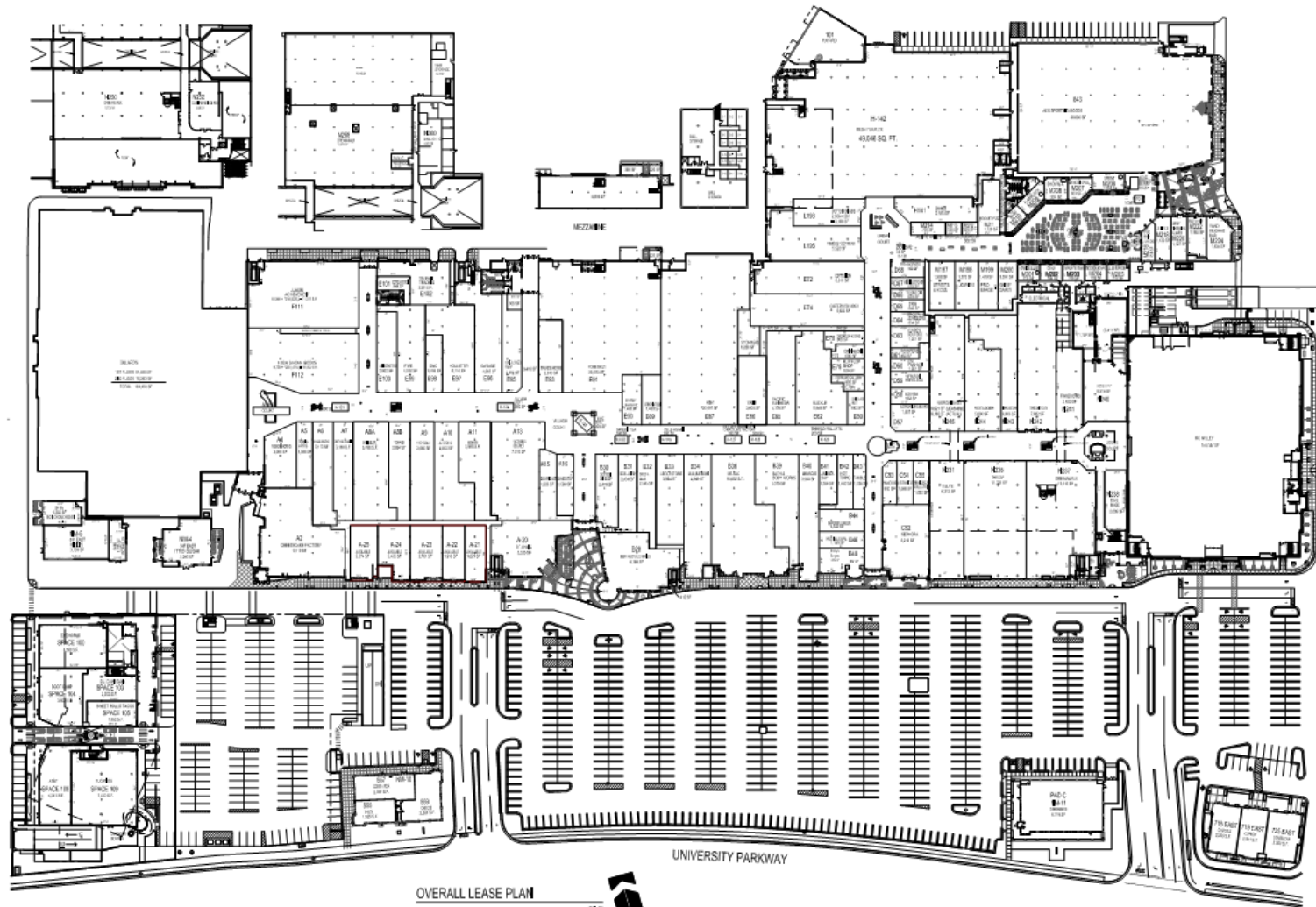


UNIVERSITY PLACE | 575 E. UNIVERSITY PARKWAY | OREM, UT

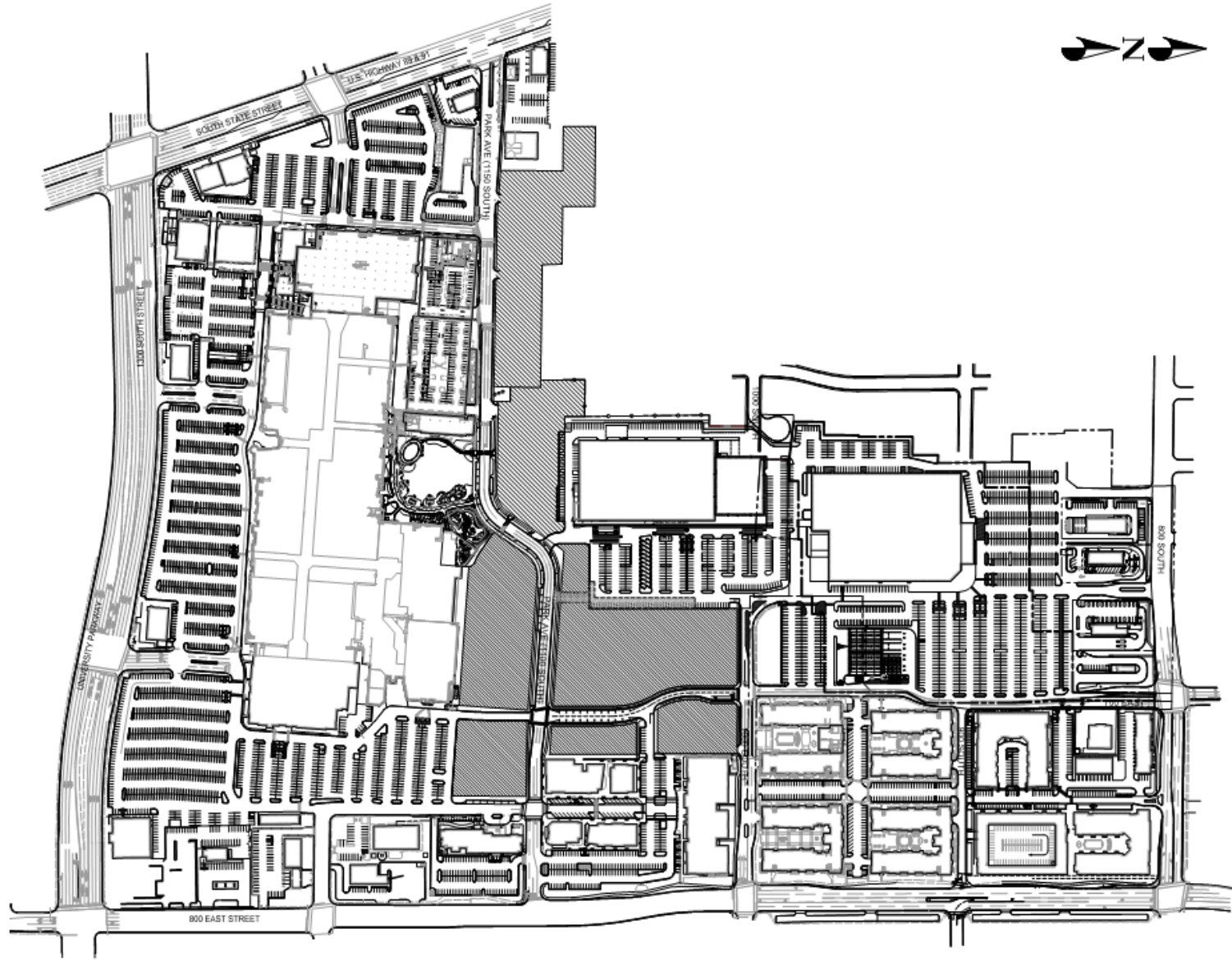


UNIVERSITY PLACE | 575 E. UNIVERSITY PARKWAY | OREM, UT

LEASING PLAN



SITE PLAN



UNIVERSITY PLACE | 575 E. UNIVERSITY PARKWAY | OREM, UT