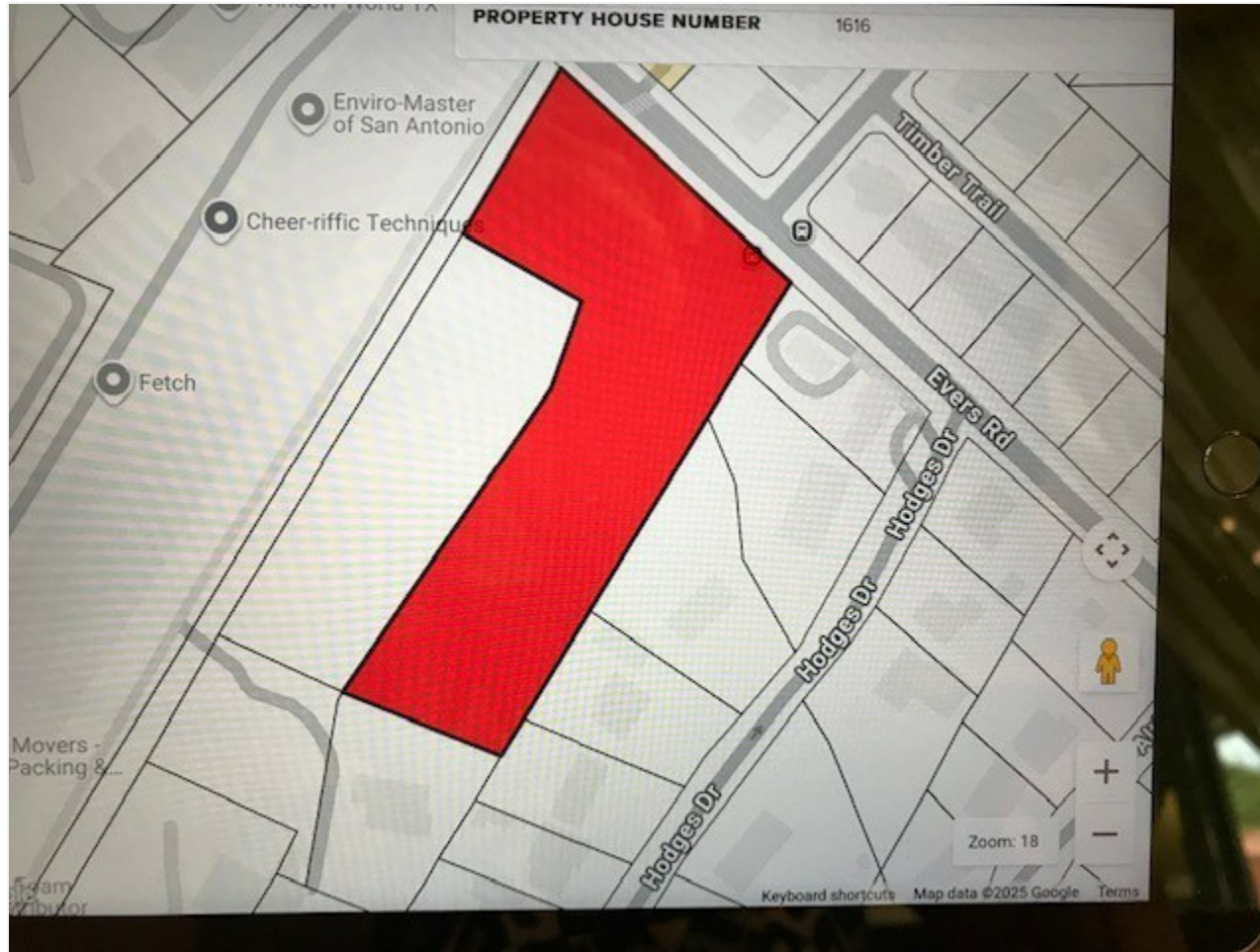


1616-2760 Evers Rd

1616-2760 Evers Rd, San Antonio, TX 78228

Owens Real Estate

Presented by
Owens Real Estate



Price: \$1,700,000

4.73 Acre Commercial Lot

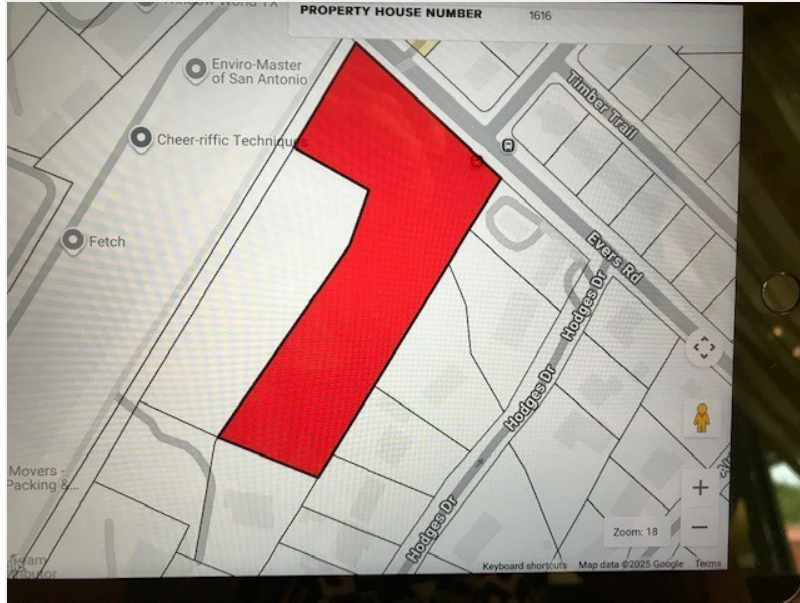
Proposed Uses: Commercial, Industrial, Retail, Office, Mixed-Use, and Self Storage

Frontage on Evers Road

Between Callaghan & Loop 410

1616-2760 Evers Rd

1616-2760 Evers Rd, San Antonio, TX 78228



growing area commercial ready to build close to Callaghan and Bandera Rd inside loop 410



Brigitte Owens

owensrealestate@msn.com

(210) 430-8057

Owens Real Estate

14546 Brookhollow Blvd, Suite 167
San Antonio, TX 78232



GREAT COMMERCIAL LOCATION READY TO BUILD ACROSS RESIDENTIAL AREA CLOSE TO LOOP 410 AND CALLAGHAN AND BANDERA RD CAN BUILD STORAGE , RETAIL,GAS STATION INDUSTRIAL ETC

1616-2760 Evers Rd

1616-2760 Evers Rd, San Antonio, TX 78228

Property Photos



image



Other

1616-2760 Evers Rd

1616-2760 Evers Rd, San Antonio, TX 78228

Location

