

12930 E COCHISE RD

SCOTTSDALE, AZ 85259

±4.75 Acres – Zoned R1-43 ESL
Asking Price: \$2,450,000

RANDOLPH C. TITZCK

Senior Vice President
602.828.1327 | randy.titzck@kidder.com

BRIAN ROSELLA

Senior Vice President
602.513.5103 | brian.rosella@kidder.com

JOSEPH CALISTRI

Senior Associate
602.513.5130 | joseph.calistri@kidder.com



FOR SALE



PROPERTY INFORMATION

ADDRESS	12930 E Cochise Road Scottsdale, AZ 85259
TYPE	Vacant Land
LAND SIZE	±206,910 SF (±4.75 Acres)
ZONING	R1-43 ESL
APN	217-31-014
2025 ASSESSED TAXES	\$5,172.66
ASKING PRICE	\$2,450,000

POPULATION

	1 Mile	3 Miles	5 Miles
2025 TOTAL	4,637	24,358	72,521
2030 PROJECTION	4,445	23,177	69,458

HOUSEHOLD & INCOME

	1 Mile	3 Miles	5 Miles
2025 TOTAL	1,826	10,749	33,926
2030 PROJECTED	1,778	10,413	33,168
2025 AVERAGE HH INCOME	\$306,703	\$221,851	\$190,633
2030 PROJECTED HH INCOME	\$305,550	\$221,693	\$189,639

Data Source: ©2025, Regis

KIDDER.COM

This information supplied herein is from sources we deem reliable. It is provided without any representation, warranty, or guarantee, expressed or implied as to its accuracy. Prospective Buyer or Tenant should conduct an independent investigation and verification of all matters deemed to be material, including, but not limited to, statements of income and expenses. Consult your attorney, accountant, or other professional advisor. All Kidder Mathews designs are the sole property of Kidder Mathews. Branded materials and layouts are not authorized for use by any other firm or person.







FOR SALE



Exclusively listed by

RANDOLPH C. TITZCK

Senior Vice President

602.828.1327

randy.titzck@kidder.com

BRIAN ROSELLA

Senior Vice President

602.513.5103

brian.rosella@kidder.com

JOSEPH CALISTRI

Senior Associate

602.513.5130

joseph.calistri@kidder.com

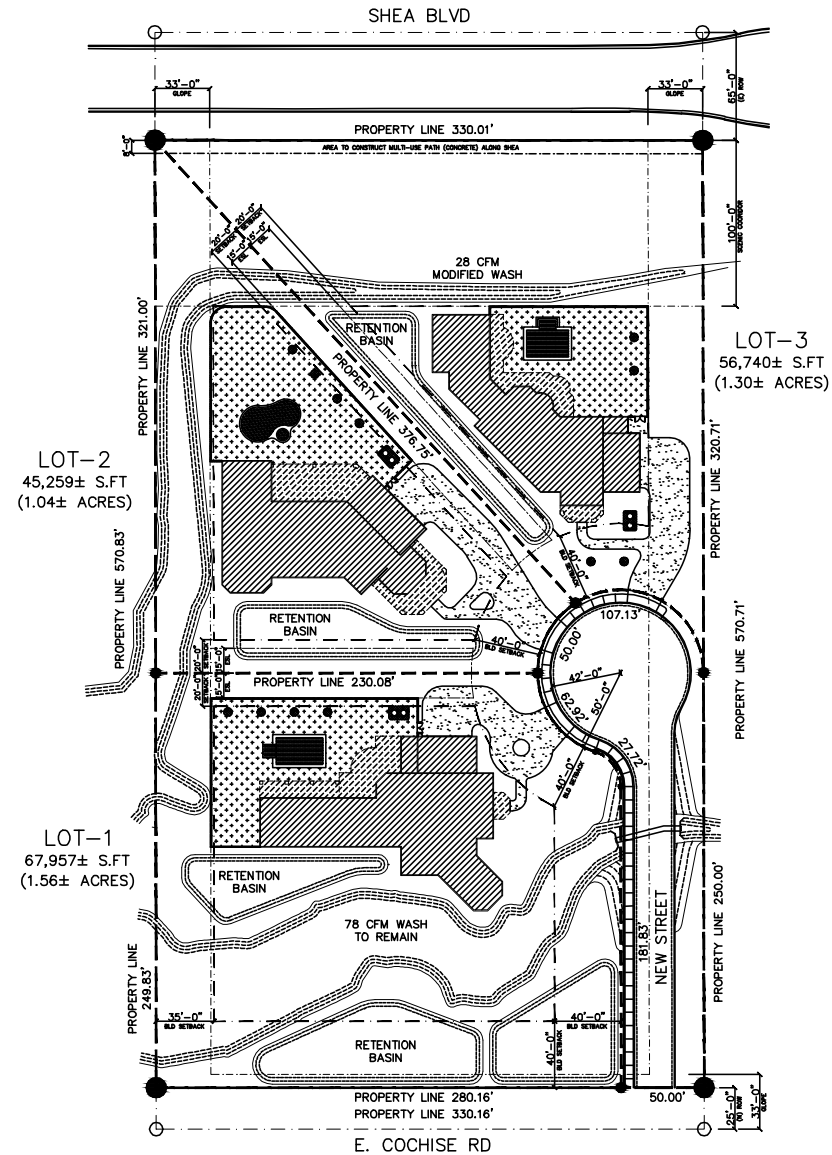
KIDDER.COM

This information supplied herein is from sources we deem reliable. It is provided without any representation, warranty, or guarantee, expressed or implied as to its accuracy. Prospective Buyer or Tenant should conduct an independent investigation and verification of all matters deemed to be material, including, but not limited to, statements of income and expenses. Consult your attorney, accountant, or other professional advisor. All Kidder Mathews designs are the sole property of Kidder Mathews. Branded materials and layouts are not authorized for use by any other firm or person.



FOR SALE

*Conceptual 3 Lot
Subdivision (Subject to
City of Scottsdale Approval)*



KIDDER.COM

This information supplied herein is from sources we deem reliable. It is provided without any representation, warranty, or guarantee, expressed or implied as to its accuracy. Prospective Buyer or Tenant should conduct an independent investigation and verification of all matters deemed to be material, including, but not limited to, statements of income and expenses. Consult your attorney, accountant, or other professional advisor. All Kidder Mathews designs are the sole property of Kidder Mathews. Branded materials and layouts are not authorized for use by any other firm or person.

Conceptual 4 Lot Subdivision (Subject to City of Scottsdale Approval)

