



### PROPERTY DESCRIPTION

**Full service lease in a well-maintained campus!** Stone Mill Office Park is a charming and professional business complex nestled in the scenic town of Hockessin, Delaware. Located within a serene natural setting, the Office Park offers a harmonious blend of modern amenities and rustic charm, making it an ideal destination for businesses of all sizes. Ample parking spaces are available throughout the complex, providing ease of access for employees and visitors. Prime location in Delaware with access to PA's Route 1 corridor.

### PROPERTY DETAILS

- **Building 722**
  - > **Suite 400:** 4,760 SF (Available Q4)
- **Building 724**
  - > **Suite 100:** 2,059 SF (Coming Soon)
  - > **Suite 240:** 1,297 SF
  - > **Suite 250:** 1,115 SF
  - > **Suite 315:** 545 SF
- **Lease Rate:** \$23.50/SF/Full Service
- **Campus Size:** 9.93 acres
- Picturesque pond view!



Building 722



Building 724

For More Information, Contact:

Gordon Winegar  
gwinegar@dsmre.com  
302.283.1800 Office  
302.757.5353 Cell

**DSM Commercial**  
Real Estate Services  
3304 Old Capitol Trail  
Wilmington, DE 19808  
dsmre.com



## STONE MILL OFFICE PARK

726 Yorklyn Rd  
Hockessin, DE 19707

# OFFICE SPACE FOR LEASE



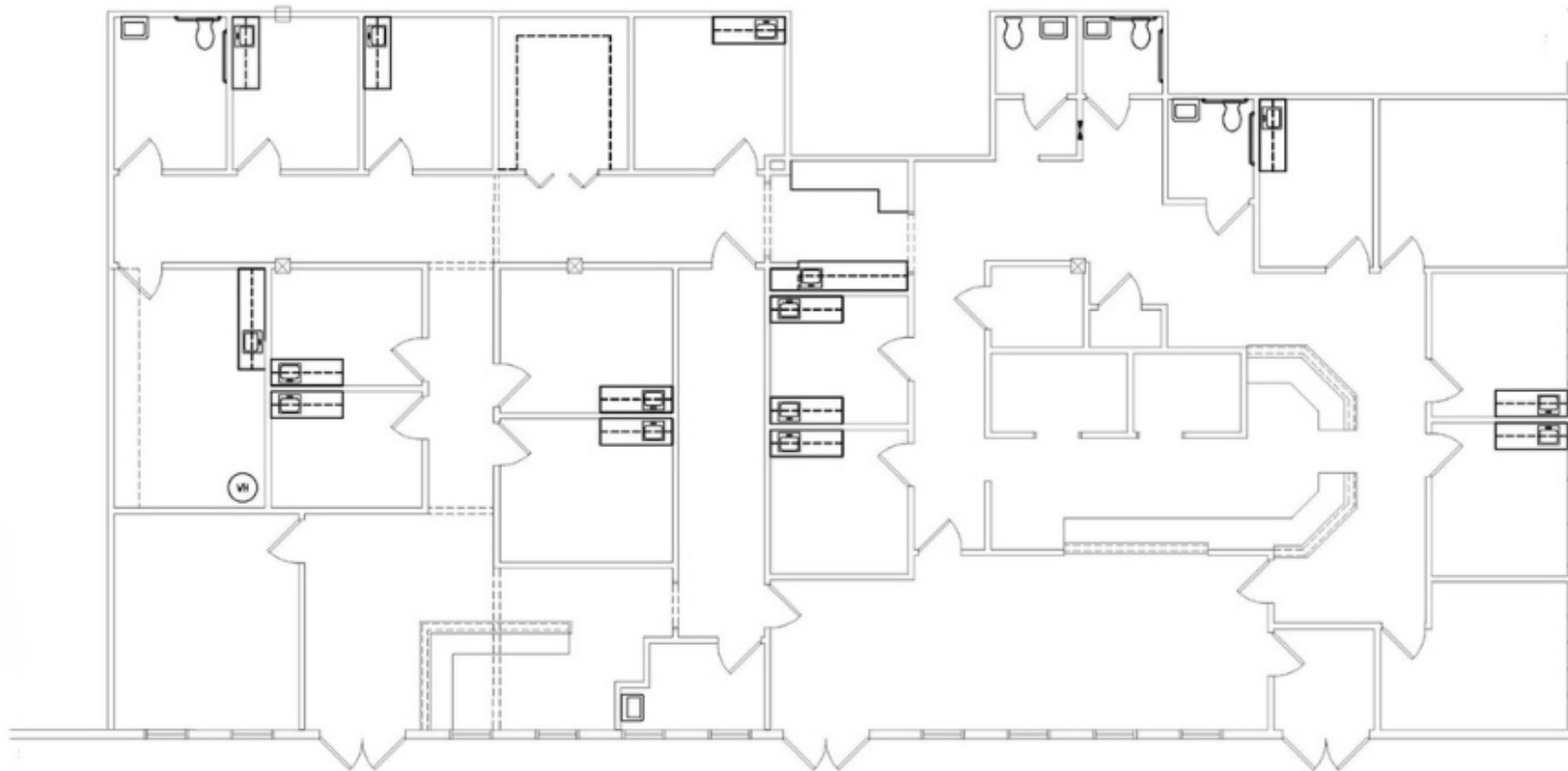
For More Information, Contact:

Gordon Winegar  
gwinegar@dsmre.com  
302.283.1800 Office  
302.757.5353 Cell

**DSM Commercial**  
Real Estate Services  
3304 Old Capitol Trail  
Wilmington, DE 19808  
dsmre.com



BUILDING 722: SUITE 400  
**4,760 SF**



For More Information, Contact:

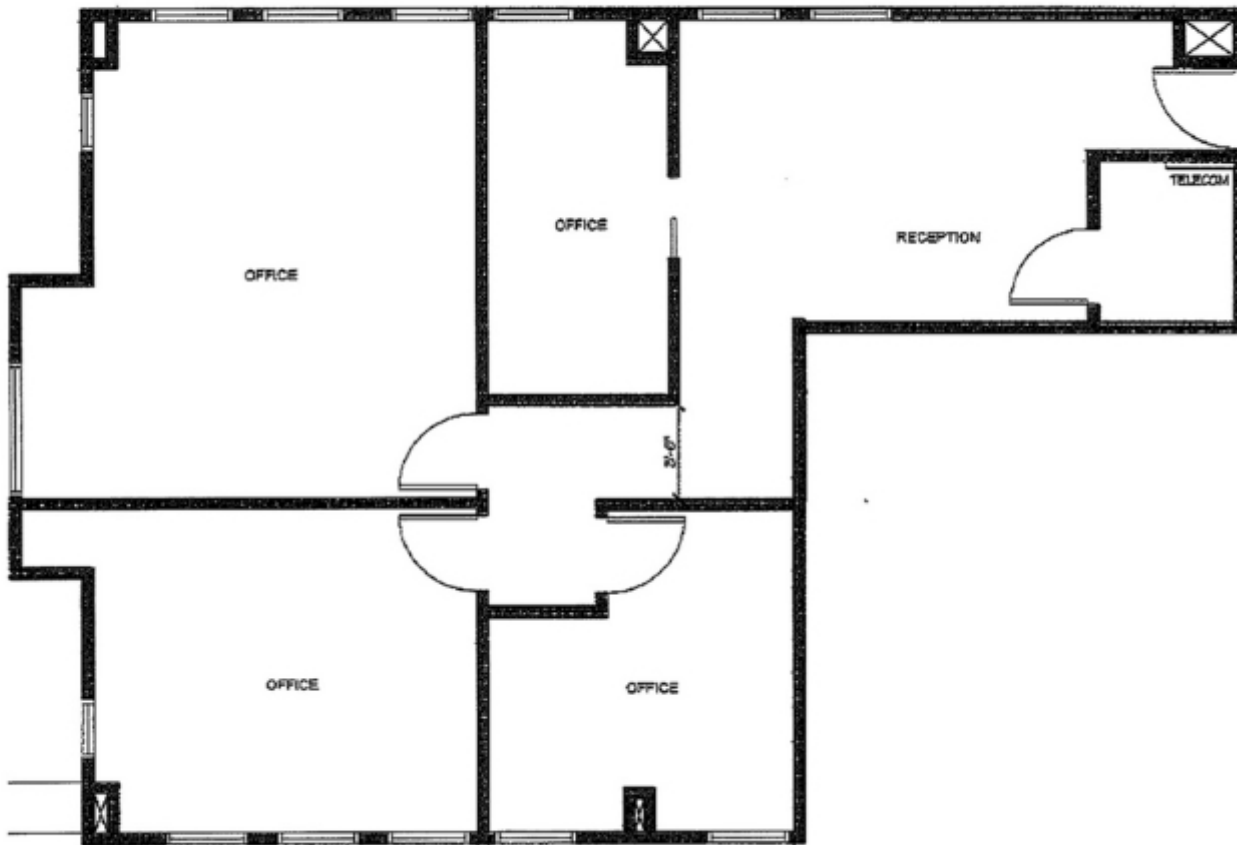
Gordon Winegar  
gwinegar@dsmre.com  
302.283.1800 Office  
302.757.5353 Cell

**DSM Commercial**  
Real Estate Services  
3304 Old Capitol Trail  
Wilmington, DE 19808  
dsmre.com

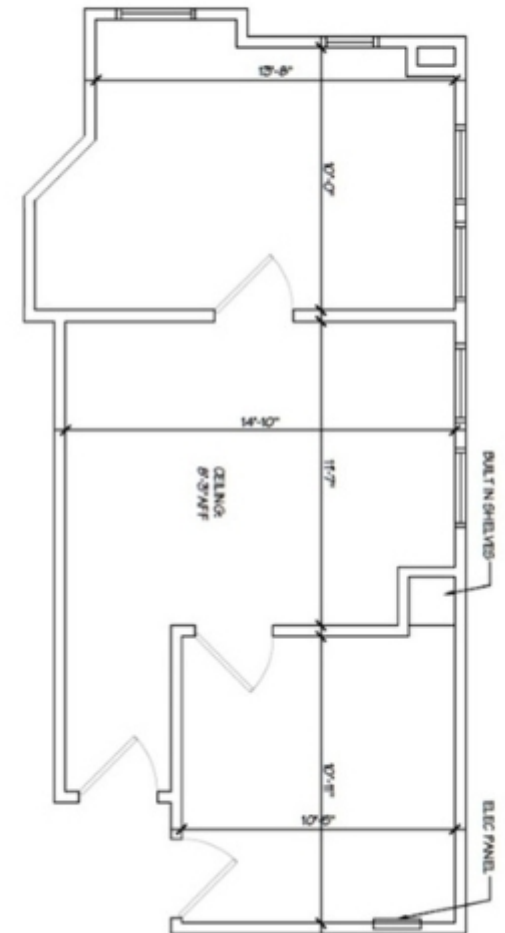




**BUILDING 724: SUITE 250  
1,115 SF**



**BUILDING 724: SUITE 315  
545 SF**



For More Information, Contact:

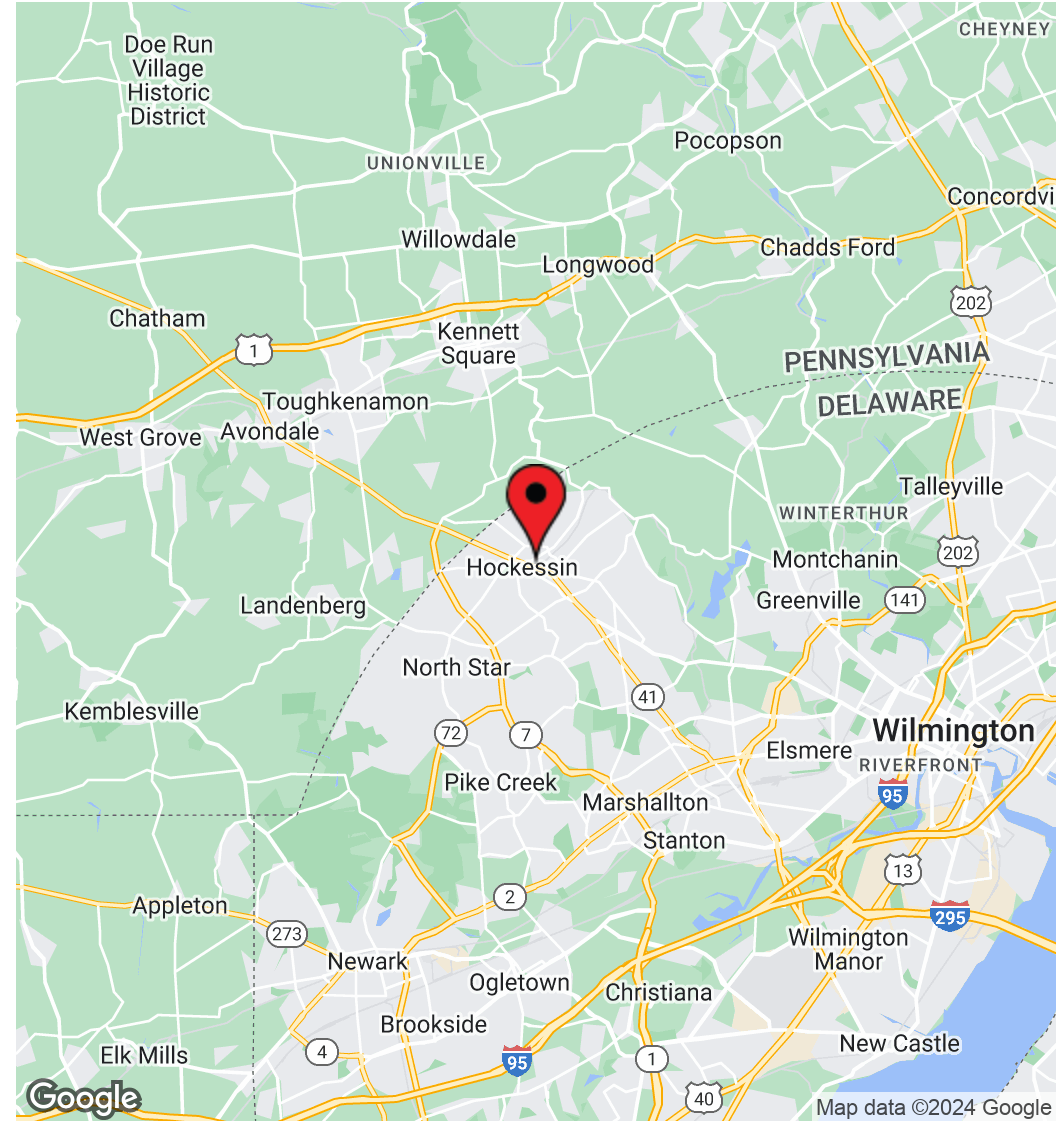
Gordon Winegar  
gwinegar@dsmre.com  
302.283.1800 Office  
302.757.5353 Cell

**DSM Commercial**  
Real Estate Services  
3304 Old Capitol Trail  
Wilmington, DE 19808  
dsmre.com

**STONE MILL OFFICE PARK**

726 Yorklyn Rd  
Hockessin, DE 19707

**OFFICE SPACE  
FOR LEASE**



DEMOGRAPHICS	1 MILE	3 MILES	5 MILES
Total population	4,055	33,118	93,265
Median age	44.2	43.2	41.9
Median age (Male)	43.1	41.9	40.4
Median age (Female)	45.6	45.2	43.7
Total households	1,443	11,953	35,333
Total persons per HH	2.8	2.8	2.6
Average HH income	\$140,740	\$137,316	\$123,695
Average house value	\$443,144	\$436,510	\$410,358

For More Information, Contact:

Gordon Winegar  
gwinegar@dsmre.com  
302.283.1800 Office  
302.757.5353 Cell

**DSM Commercial**  
Real Estate Services  
3304 Old Capitol Trail  
Wilmington, DE 19808  
dsmre.com