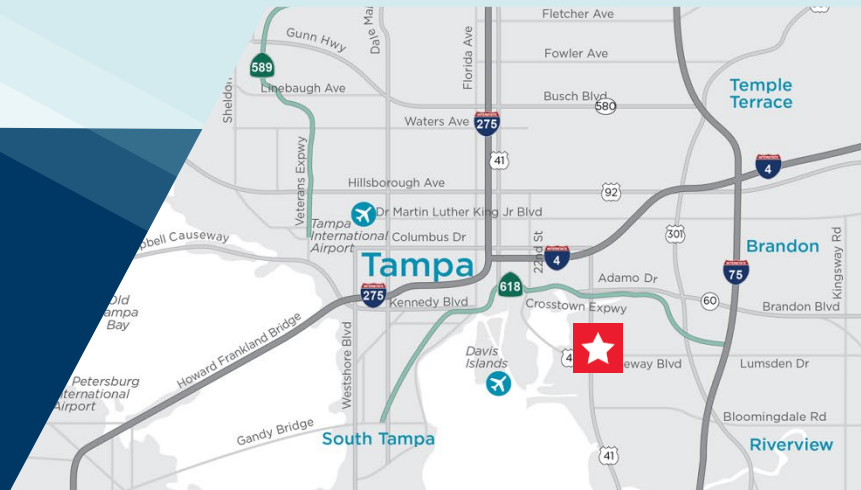


MERIDIAN EAST

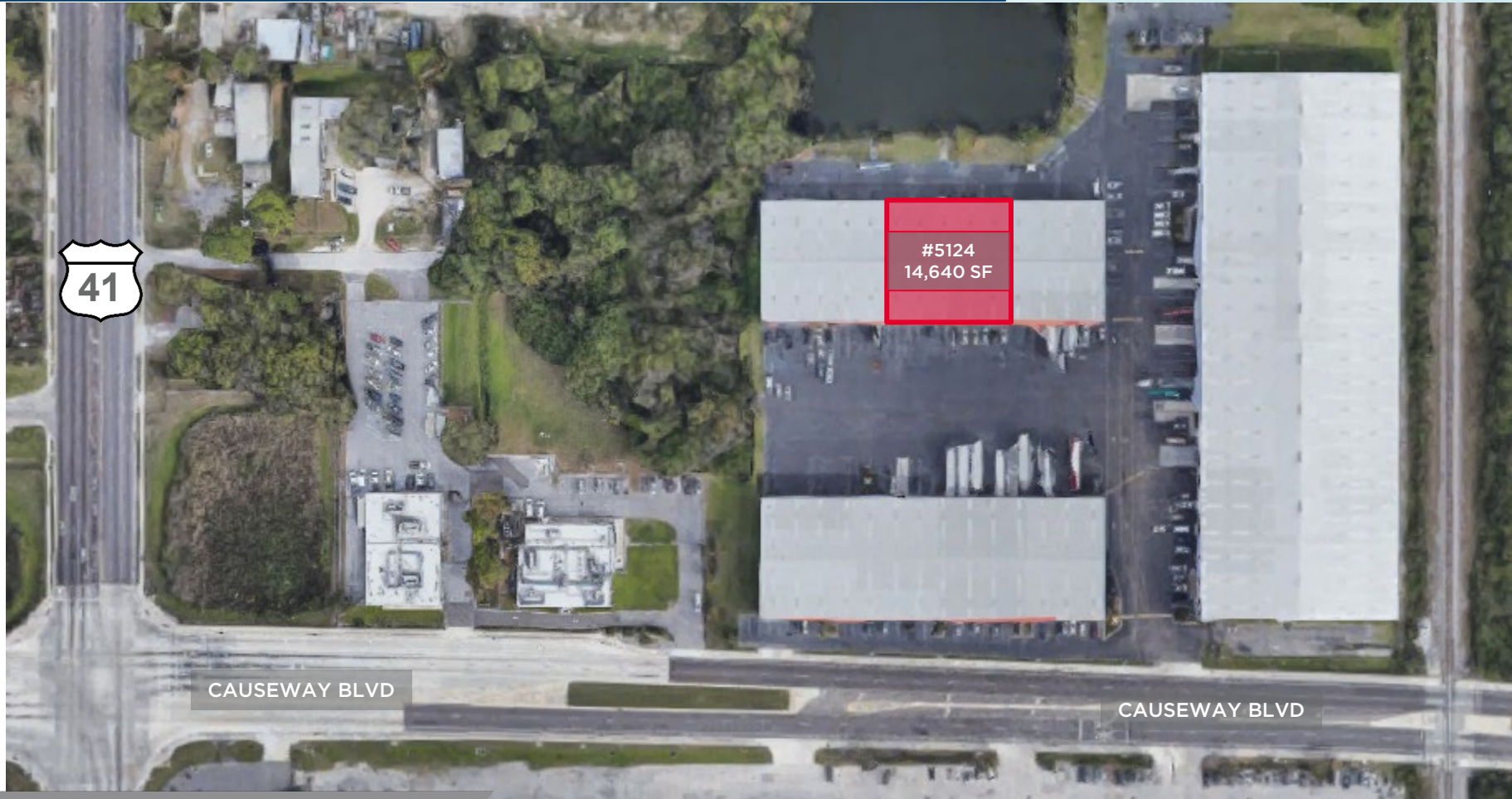
5124 Vivian Place
Tampa, FL 33619



14,640 SF Available

MERIDIAN EAST

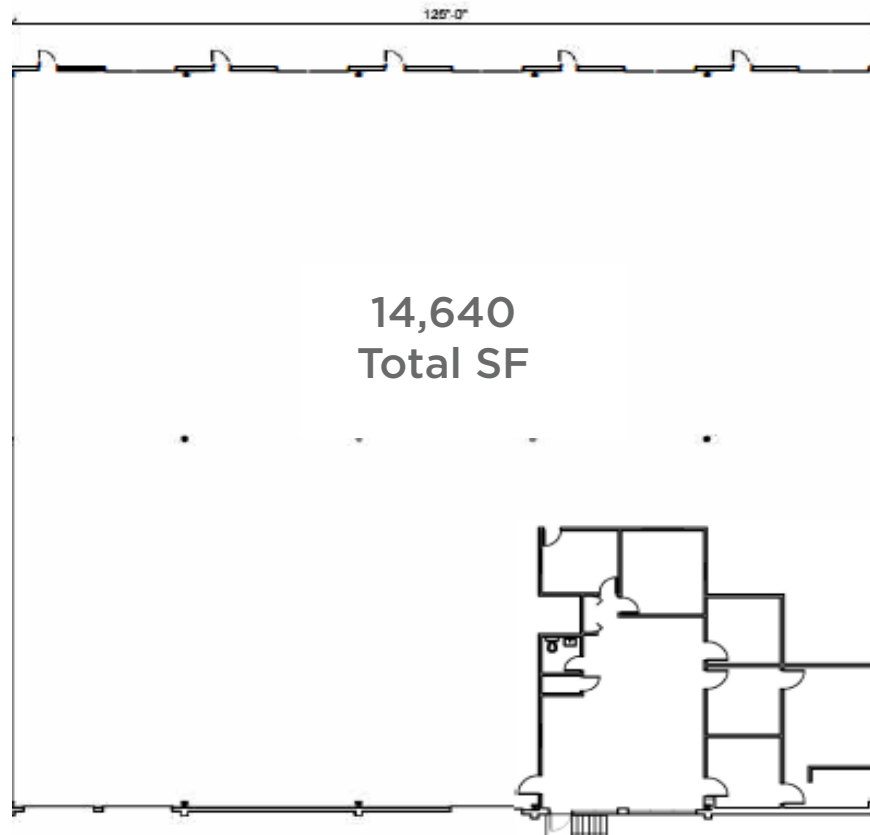
5124 Vivian Place
Tampa, FL 33619



PROPERTY HIGHLIGHTS

- 14,640 SF Available
- ± 2,500 SF Office
- Column Spacing: 23'x58'
- 3 Dock High Doors - Front
- 5 Grade Level Doors - Rear
- Available Now
- 16'-20' Clear Height
- Concrete Block Construction
- Fully Sprinklered
- Easy Access to the Port, I-4, Lee Roy Selmon Expressway, US HWY 301, and I-75

5124 Vivian Place | 14,640 Total SF



3 Dock High Doors - Front
5 Grade Level Doors - Rear
Available Now

FOR ADDITIONAL INFORMATION, PLEASE CONTACT:

TREY CARSWELL, SIOR
Managing Director
+1 813 204 5314
trey.carswell@cushwake.com

LISA ROSS, SIOR
Managing Director
+1 813 424 3211
lisa.ross@cushwake.com

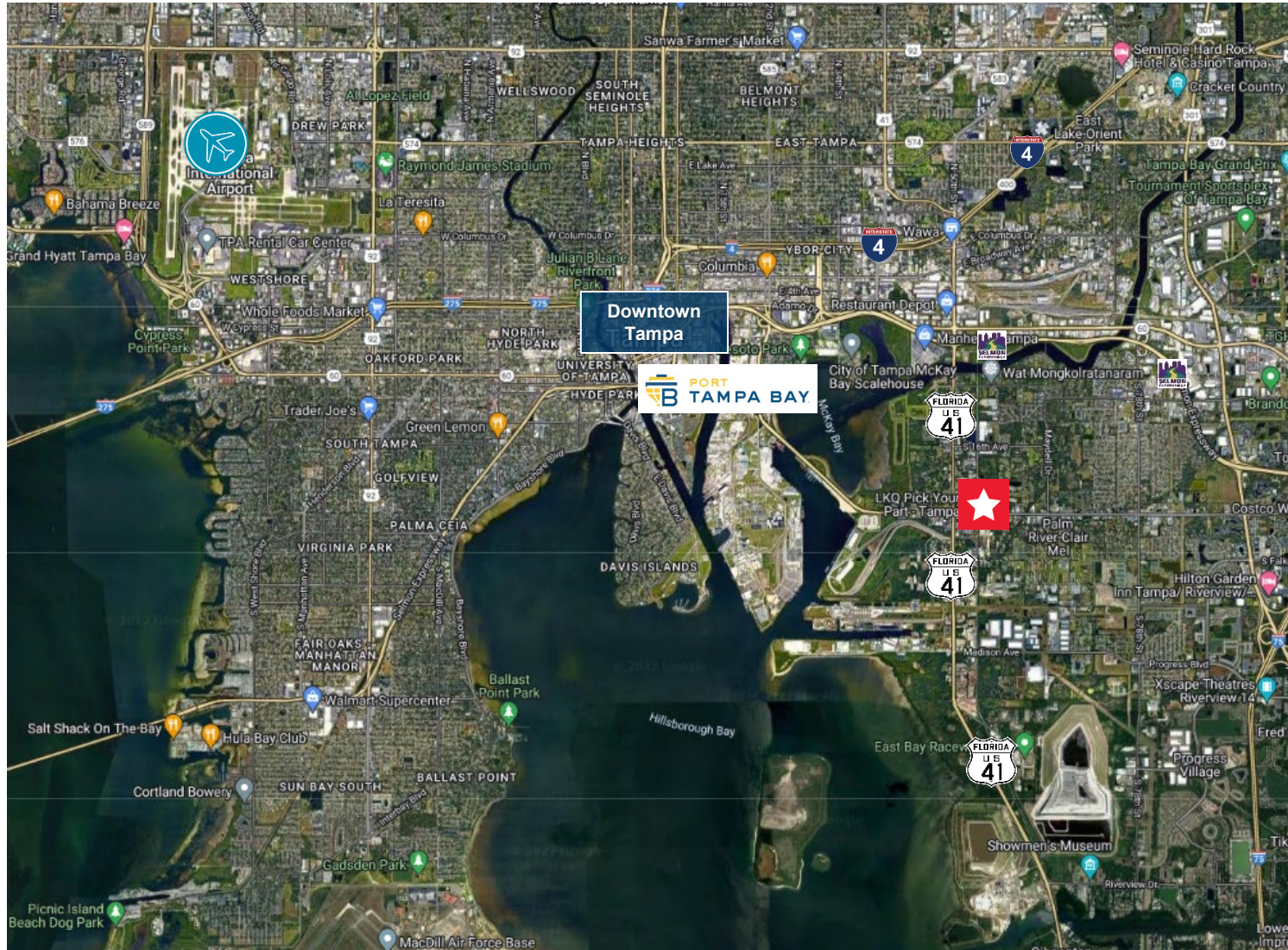
SAM KOROLOS
Associate
+1 704 989 1327
sam.korolos@cushwake.com

OXFORD

CUSHMAN &
WAKEFIELD

Meridian East

5124 Vivian Place



FOR ADDITIONAL INFORMATION, PLEASE CONTACT:

TREY CARSWELL, SIOR
Managing Director
+1 813 204 5314
treycarswell@cushwake.com

LISA ROSS, SIOR
Managing Director
+1 813 424 3211
lisa.ross@cushwake.com

SAM KOROLOS
Associate
+1 704 989 1327
sam.korolos@cushwake.com

OXFORD

CUSHMAN & WAKEFIELD