

56  
WAREHAM  
STREET

56 WAREHAM STREET | BOSTON, MA

# HIGH END PLUG & PLAY OPPORTUNITY

5,643 RSF FOR SUBLEASE

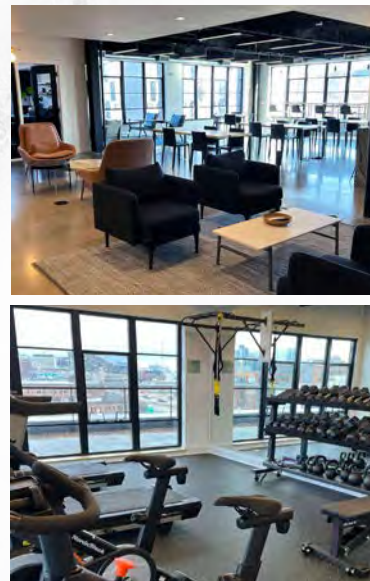


CUSHMAN &  
WAKEFIELD



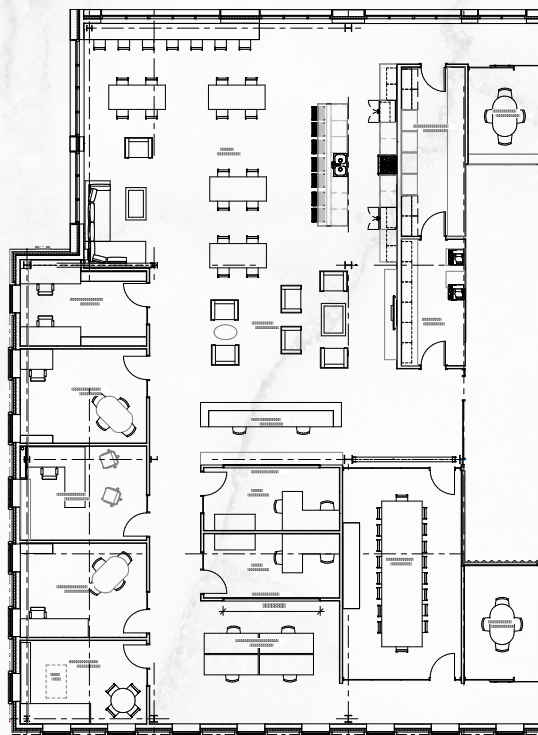
# INNOVATIVE COMMERCIAL SPACE

Newly Delivered Building with Sophisticated Designs



MOVE IN READY | 5,643 SF

Term: Flexible Possession: Immediately



## BUILDING AMENITIES



LUSH ROOFTOP  
GARDEN &  
TERRACE



DOG FRIENDLY  
BUILDING



ON-SITE  
FITNESS CENTER



LEED SILVER  
CERTIFIABLE

## FULLY OUTFITTED FOR PLUG & PLAY



7 PRIVATE  
OFFICES  
13 TOTAL  
WORKSTATIONS



3 CONFERENCE ROOMS  
(1 BOARDROOM) WITH  
EMBEDDED ZOOM &  
AUDIO TECHNOLOGY



OPEN LOUNGE  
SPACE DOUBLES  
AS EVENT SPACE



3 WALLS OF  
WINDOW BRING  
IN NATURAL LIGHT



HIGH END  
CHEF-INSPIRED  
KITCHEN



AMPLE  
STORAGE

## CONVENIENTLY LOCATED IN THE HEART OF BOSTON'S SOUTH END

Situated in Boston's South End neighborhood, 56 Wareham St. is located steps from a suite of top-quality restaurants, hotels and entertainment.

The property is easily accessible via I-90 and I-93 as well as MBTA bus routes 8, 10, & 15 and the MBTA Orange, Silver and Red lines.



30+ Nearby  
Restaurants



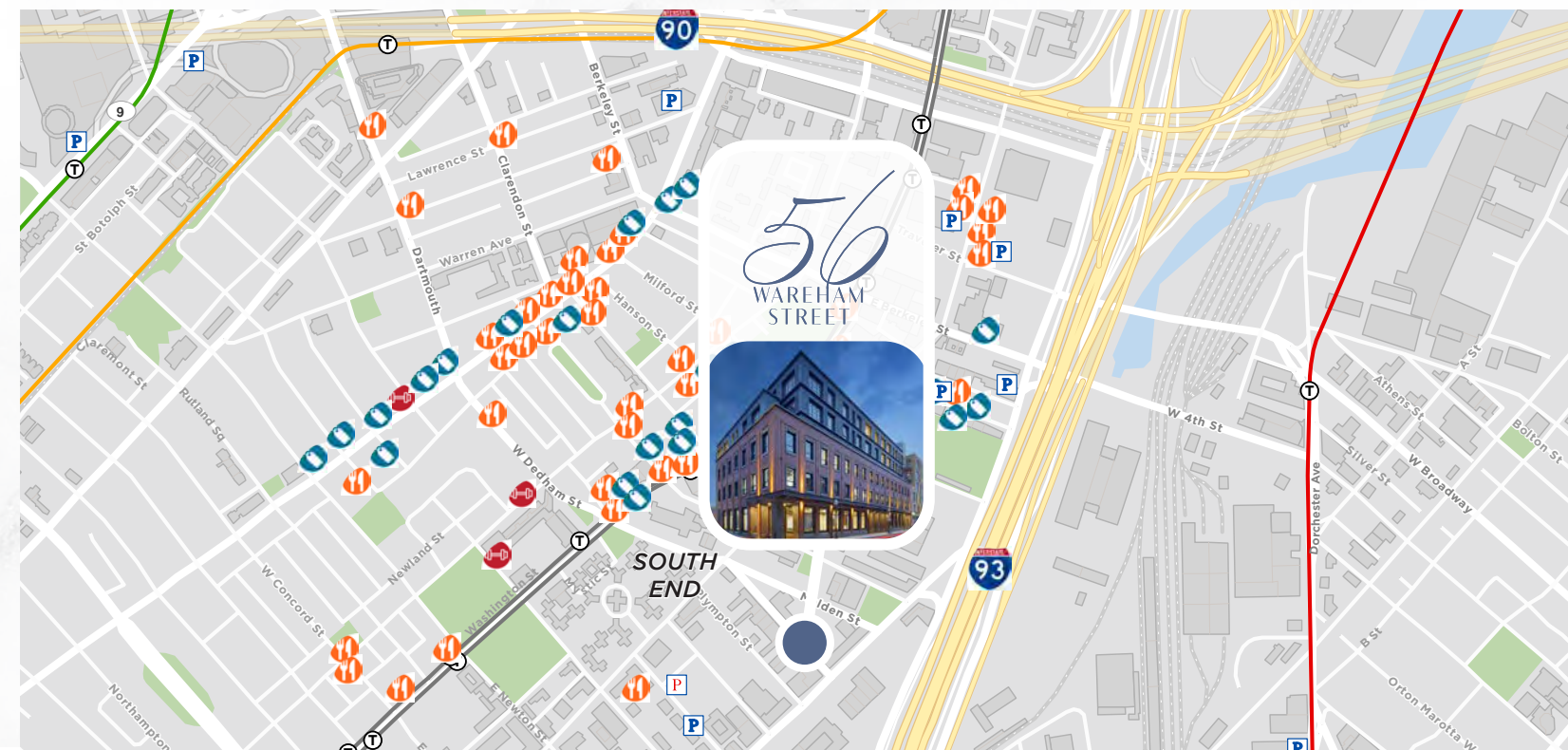
10+ Health &  
Fitness Centers



15+ Shopping  
& Retail Stores



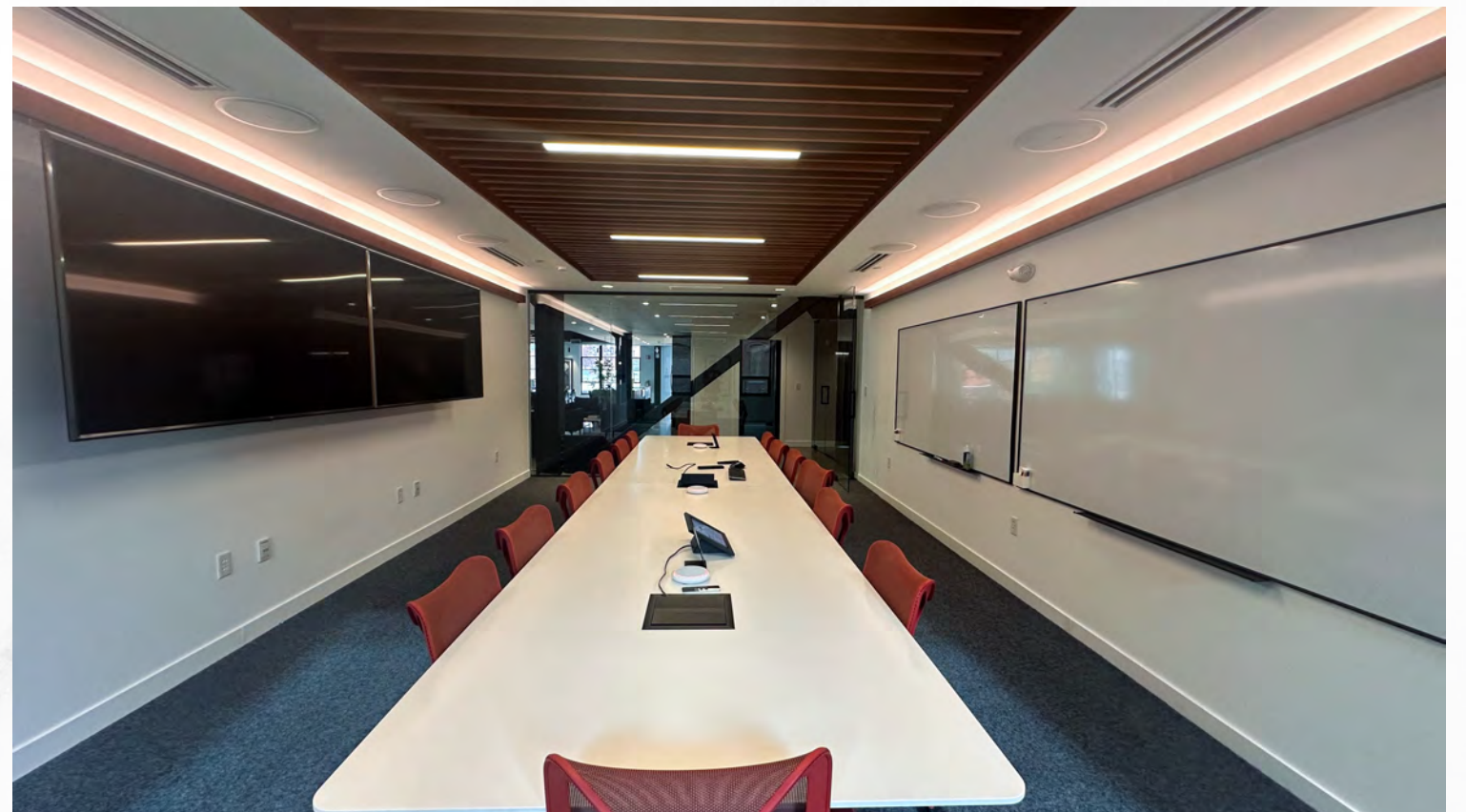
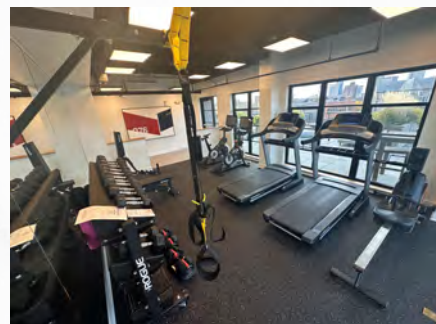
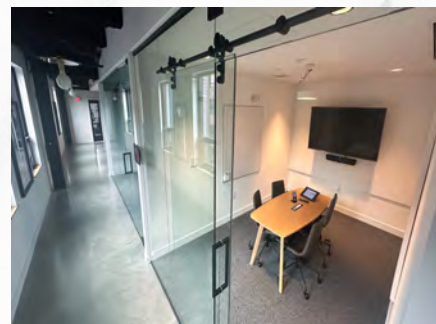
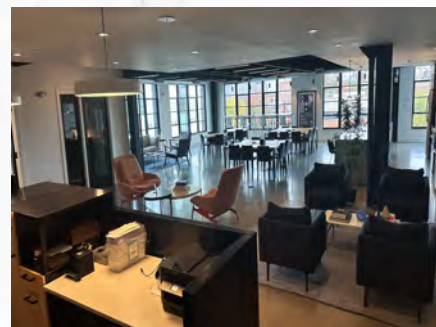
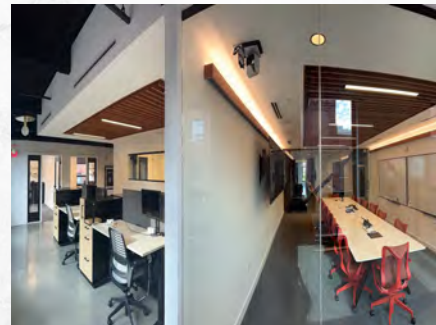
5+ Nearby  
Parking Garages





# PROPERTY PHOTOS

.....





# 56

WAREHAM  
STREET



---

**THOMAS ASHE**

thomas.ashe@cushwake.com  
+ 1 617 204 4112

---

**MARY PATALITA**

mary.patalita@cushwake.com  
+ 1 617 630 7400

56 WAREHAM STREET  
BOSTON, MA



**CUSHMAN &  
WAKEFIELD**