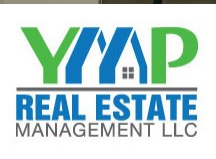




HEADWAY OFFICE PARK

4410, 4500 & 4620
NORTH STATE ROAD 7
Lauderdale Lakes, FL 33319



TWO FLOORS With
30K SF AVAILABLE
Offering Exterior Building Signage



**MAJOR BUILDING
RENOVATIONS**
Underway



CLASS A FINISHES At
Class B Rates





PROPERTY FEATURES

- On-site gym
- On-site management
- Multi-floor availability for up to 38,000 SF
- Exterior building signage available
- Professional Class B building
- Lakefront setting
- Immediate access to Florida's Turnpike & easy access to I-95
- Close proximity for banking, retail and restaurants
- Immediate occupancy available



SPEC SUITE

4410 BLDG / 2ND FLOOR

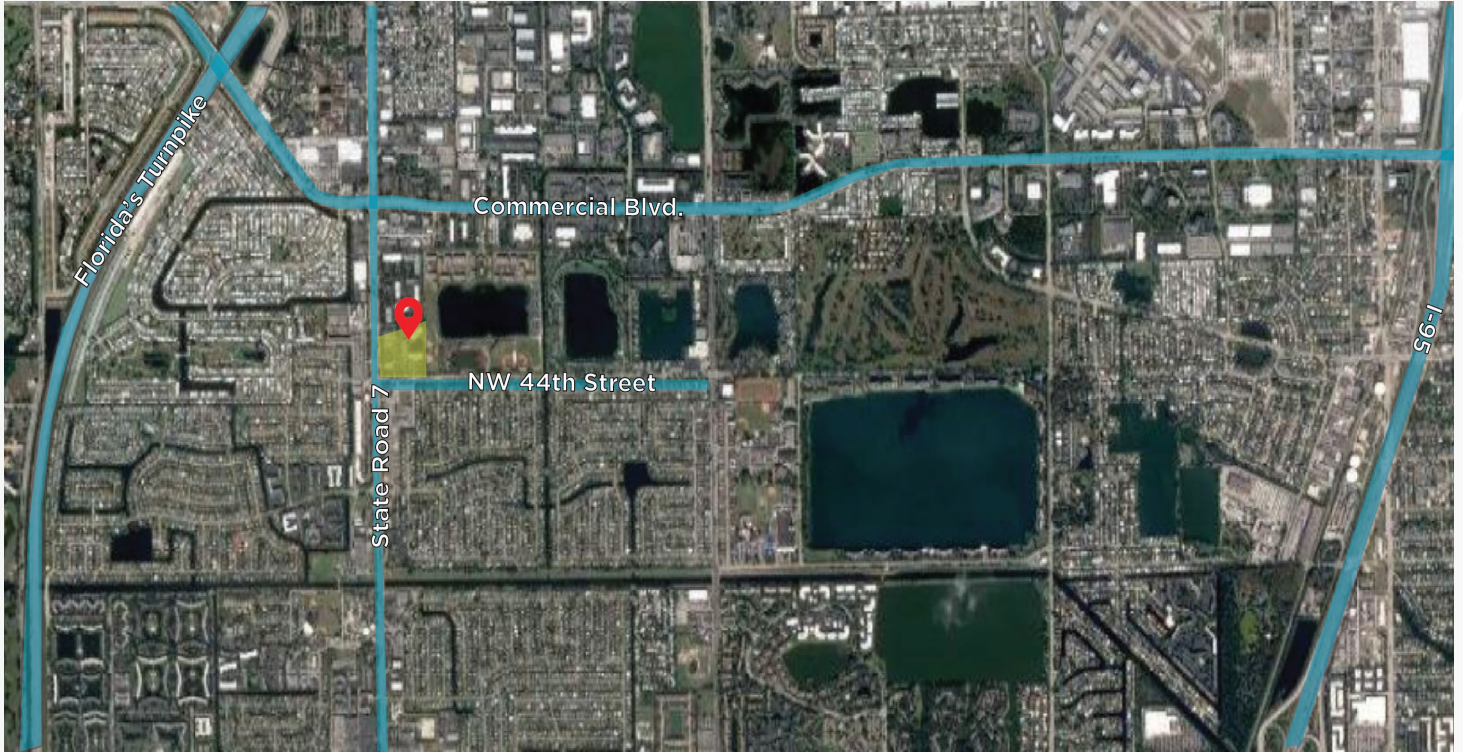


SPEC SUITE

4410 BLDG / 2ND FLOOR



PRIME LOCATION



PROPERTY DETAILS

131,463

Building Total (SF)

871 - 29,431

Available (SF)

\$22.00 FS

Price

4/1,000

Parking

Donna Korn
Managing Director
+1 954 377 0498
Donna.korn@cushwake.com

Beau Ladwig
Associate
+1 954 938 2610
Beau.ladwig@cushwake.com



©2021 Cushman & Wakefield. All rights reserved. The information contained in this communication is strictly confidential. This information has been obtained from sources believed to be reliable but has not been verified. NO WARRANTY OR REPRESENTATION, EXPRESS OR IMPLIED, IS MADE AS TO THE CONDITION OF THE PROPERTY (OR PROPERTIES) REFERENCED HEREIN OR AS TO THE ACCURACY OR COMPLETENESS OF THE INFORMATION CONTAINED HEREIN, AND SAME IS SUBMITTED SUBJECT TO ERRORS, OMISSIONS, CHANGE OF PRICE, RENTAL OR OTHER CONDITIONS, WITHDRAWAL WITHOUT NOTICE, AND TO ANY SPECIAL LISTING CONDITIONS IMPOSED BY THE PROPERTY OWNER(S). ANY PROJECTIONS, OPINIONS OR ESTIMATES ARE SUBJECT TO UNCERTAINTY AND DO NOT SIGNIFY CURRENT OR FUTURE PROPERTY PERFORMANCE.