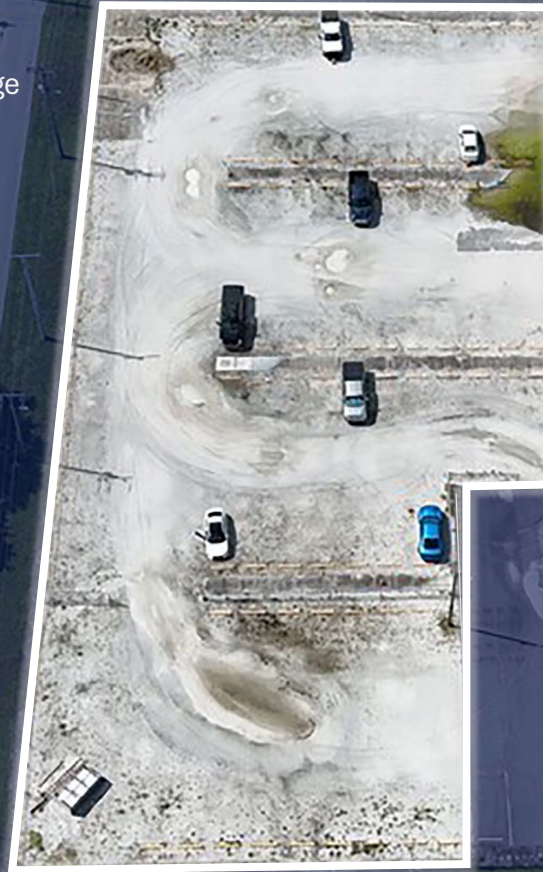


3712 W Walnut Street

Tampa, FL 33607

0.92 Acres of Paved, Fenced, and Lit Outdoor Storage

For Lease



Ryan Hutkowski

Managing Partner

c: (908) 337-8734

o: (813) 725-3454

Rhutkowski@LHCapitalpartners.net

Sam Ashe

Vice President

c: (443) 847-7574

o: (813) 725-3454

SAsh@LHCapitalpartners.net



For Lease

Property Details

Lease Rate	Contact Broker
Available	Immediately
Lease Term	1-5 years
Lease Type	NNN
Acreage	0.92
Zoning	Commercial Intensive
Location	Map Link
Folio	111703.0005



Overview

0.92 acres of industrially zoned land in the city of Tampa available for lease. The property is located less than 7 minutes to Tampa International Airport and less than 1-mile to I-275, providing convenient access to I-4 and the greater Tampa Bay region. Commercial Intensive (CI) zoning allows for a variety of industrial uses making the property ideal for fleet/truck parking, equipment storage, material storage, and laydown yard.

Property Highlights

- Gated Access
- Fully Paved, Fenced, and Lit
- Proximity to Tampa International Airport
- Easy Access to I-275 and I-4



Location Overview



0.5 miles | 3 min.



Tampa
International
Airport



3.6 miles | 5 min.



4.4 miles | 11 min.

