

# CITY & CENTRE

PLACE

CLASS A OFFICE FOR LEASE  
400 S 4TH ST | LAS VEGAS, NV 89101

[CLICK HERE TO VIEW  
PROPERTY VIDEO](#)

  
CUSHMAN &  
WAKEFIELD

# LUXURY MEETS LOCATION

For businesses seeking to locate in Las Vegas' civic core, City Centre Place is the ideal choice. With ample onsite parking and a location within walking distance of Las Vegas' numerous municipal, county, and federal government facilities, City Centre Place offers the best value and the most high-end office space in downtown.

# AN ELEVATED EXPERIENCE



107,123 RSF TOTAL,  
6 STORIES



SINGLE AND MULTI-  
TENANT FLOORS



ONSITE SECURITY  
SERVICE



4:1000 ATTACHED  
PARKING GARAGE WITH  
CONTROLLED ACCESS



OUTSTANDING  
ACCESS TO US 95  
AND I-15



WALKING DISTANCE  
TO DOWNTOWN  
COURTHOUSES AND  
GOVERNMENT BUILDINGS



# 2<sup>ND</sup> FLOOR

AVAILABILITIES

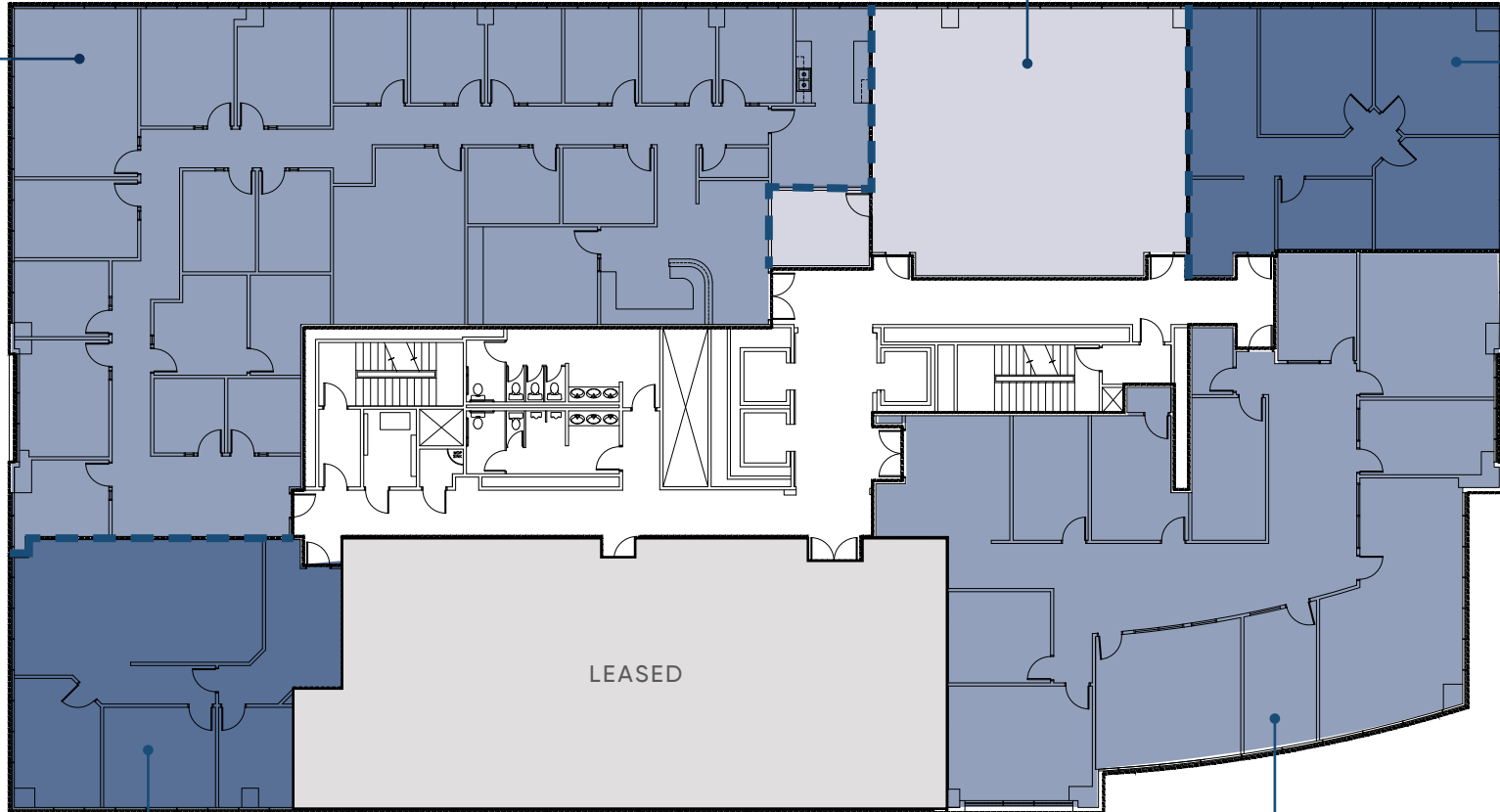
\$2.40 FSG

SUITE 250B  
±1,706 RSF



SUITE 250A  
±6,581 RSF

SUITE 225  
±1,674 RSF



SUITE 270  
±1,664 RSF

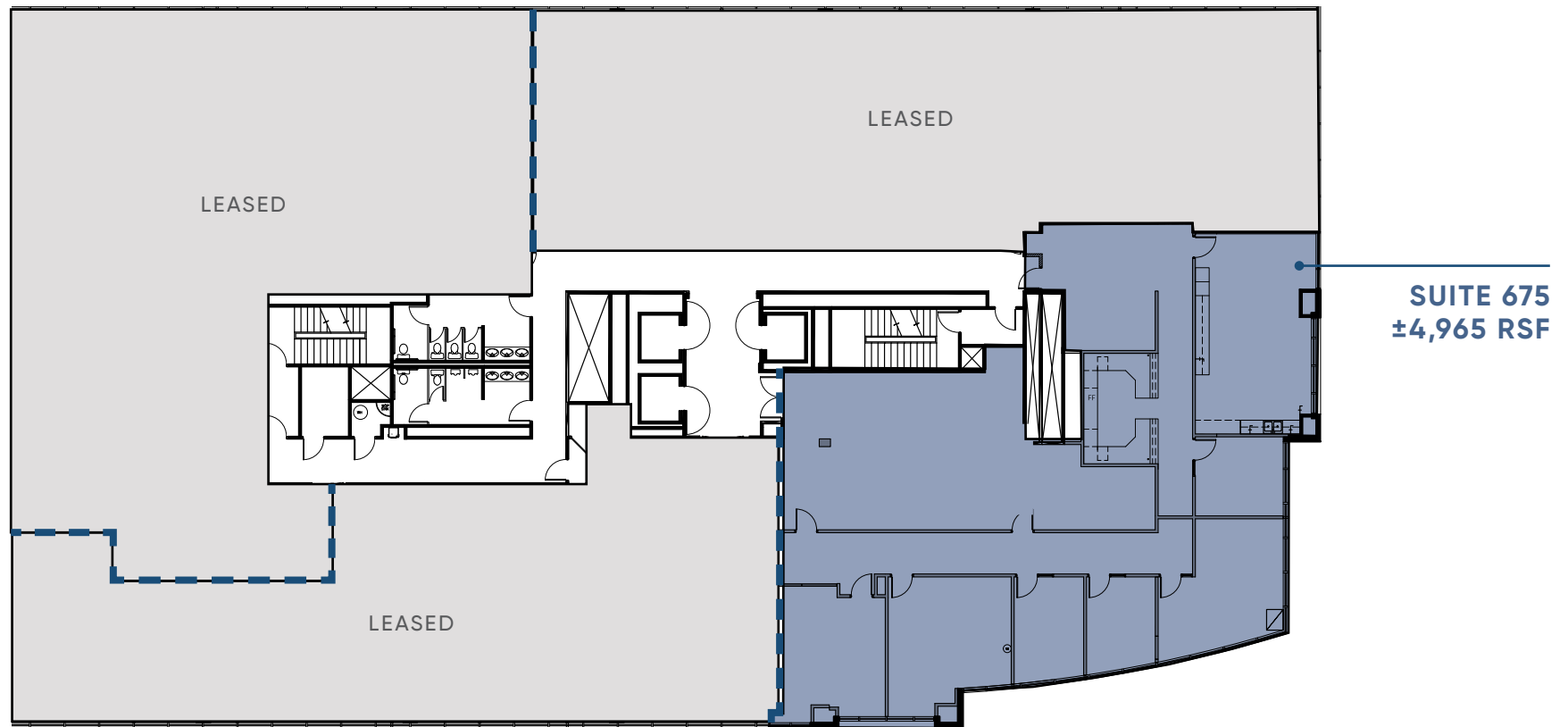


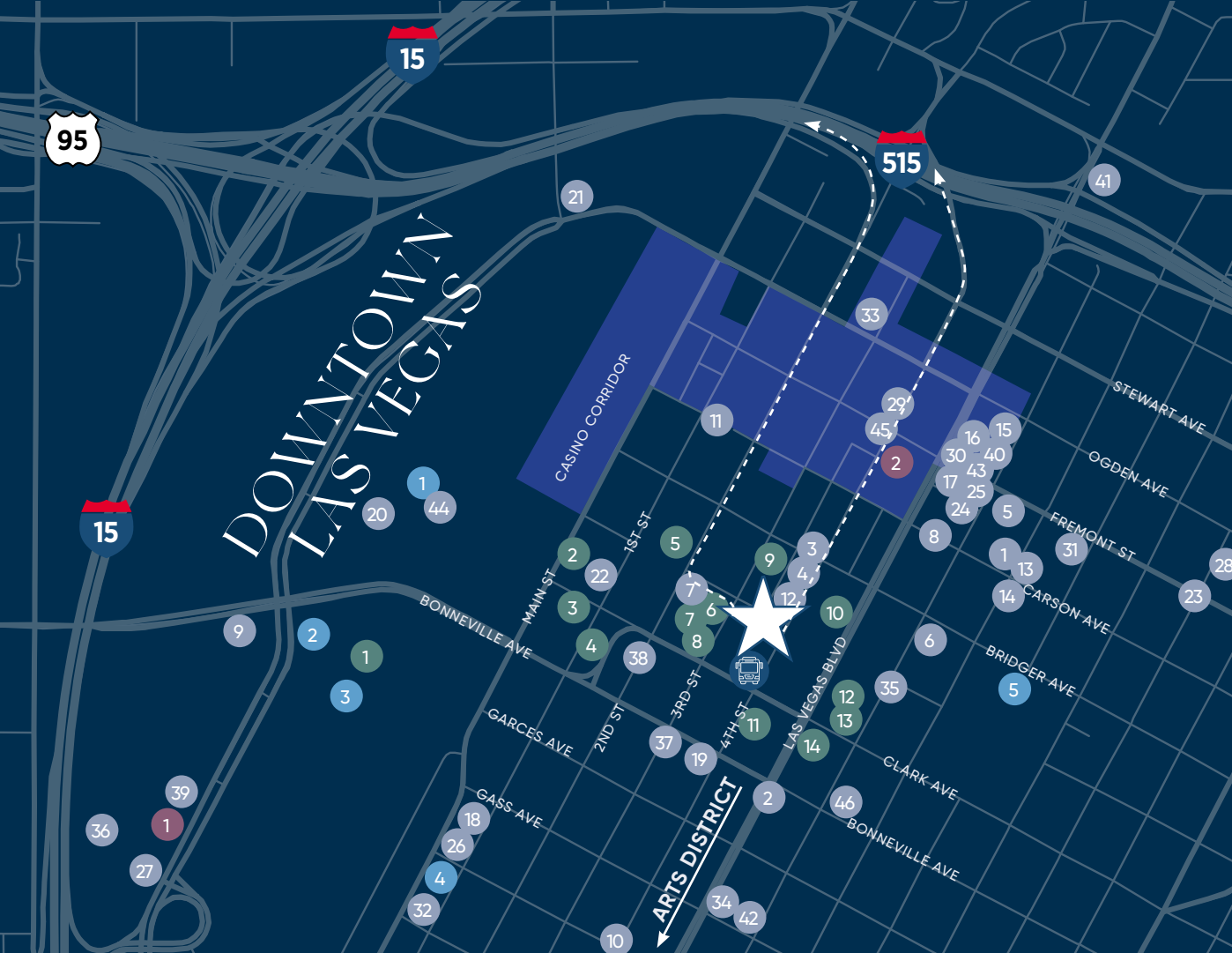
SUITE 215  
±4,707 RSF

# 6<sup>TH</sup> FLOOR

AVAILABILITIES

\$2.40 FSG





CONVENIENTLY CLOSE  
**AMENITIES**

From coffee to dining to cocktails, hotels, entertainment, and shopping – you'll find it all just outside your door.



**COURTHOUSES**

1. Clark County Government Center
2. Las Vegas City Hall
3. Las Vegas Municipal Courts
4. City of Las Vegas Municipal Courthouse
5. Clark County Detention Center
6. Las Vegas Justice Court
7. Clark County Court Education
8. Clark County Courthouse
9. Clark County Law Library & Public Defender's Office
10. U.S. Bankruptcy Court, District of Nevada
11. Supreme Court of Nevada
12. Federal Courthouse
13. Lloyd D George Courthouse
14. Federal Justice Tower

**RESTAURANTS**

1. 7th & Carson
2. After Hour Pizza
3. AmeriBrunch Cafe
4. Bad Owl Coffee Roaster
5. Bangkok Street Thai Street Kitchen
6. Brew It Coffee House
7. Capriotti's Sandwich Shop
8. Carson Kitchen
9. Cheesecake Factory
10. Chicago Joe's Restaurant
11. Chick-fil-A
12. Daily Dose Cafe
13. Downtown Terrace
14. eat.
15. Eureka! Discover American Craft
16. Evel Pie
17. Flippin' Good Chicken, Burgers, Beer
18. Great Greek Mediterranean Grill
19. Greens and Proteins
20. Home Span
21. Jason's Deli
22. Jimmy John's
23. The Kitchen at Atomic
24. La Mona Rosa
25. Le Thai
26. Letty's de Leticia's Cocina
27. Medellin Empanadas
28. Mothership Coffee Ferguson's
29. Nacho Daddy
30. Park on Fremont
31. Pinches Tacos
32. The Pepper Club

33. Pizza Rock
34. Rick's Rollin Smoke BBQ
35. RTS Courthouse Cafe
36. Shake Shack
37. Sin City Seafoodhouse
38. Starbucks
39. Subway
40. Sushi Ichiban
41. Taqueria El Buen Pastor
42. Taqueria Ktrina
43. Therapy
44. Vic's
45. White Castle
46. The Writers Block

**SHOPPING**

1. Las Vegas North Premium Outlets
2. Walgreens

**EV CHARGING**

1. OpConnect
2. Blink
3. ChargePoint
4. GreenJuice
5. Tesla Supercharger

DOWNTOWN LAS VEGAS:

# WHERE WORK TURNS TO PLAY



## CULTURE & ARTS

- Discovery Children's Museum
- Natural History Museum
- Las Vegas Arts District
- Neon Museum
- Mob Museum
- The Smith Center for the Performing Arts

## ENTERTAINMENT

- Fremont Street Experience
- Neonopolis
- Life is Beautiful Festival
- The Mob Museum
- Viva Vision Canopy Light Show
- Area 15

## PARKS

- Cashman Complex
- Container Park
- Symphony Park



## HOTELS & CASINOS

- California Hotel & Casino
- Golden Gate Hotel & Casino
- Circa
- Fremont Hotel & Casino
- Downtown Grand Hotel & Casino
- Golden Nugget Las Vegas
- El Cortez Hotel & Casino
- Main Street Station Casinos
- Four Queens Hotel & Casino
- Plaza Hotel & Casino
- Oasis at Gold Spike
- The D Las Vegas



## SHOPPING

- Costco
- World Market Center
- Las Vegas Premium Outlets North



## HEALTHCARE

- Las Vegas Medical District
- Lou Ruva Center for Brain Health
- University Medical Center
- Valley Hospital Medical Center

# CITY CENTRE PLACE

FOR MORE INFORMATION, PLEASE CONTACT:

## CHARLES VAN GEEL

Senior Director

+1 702 688 6966

[charles.vangeel@cushwake.com](mailto:charles.vangeel@cushwake.com)

LIC #B.044616

## MATTHEW BEBAN

Associate

+1 702 796 7900

[matthew.beban@cushwake.com](mailto:matthew.beban@cushwake.com)

LIC #S.0202638

