

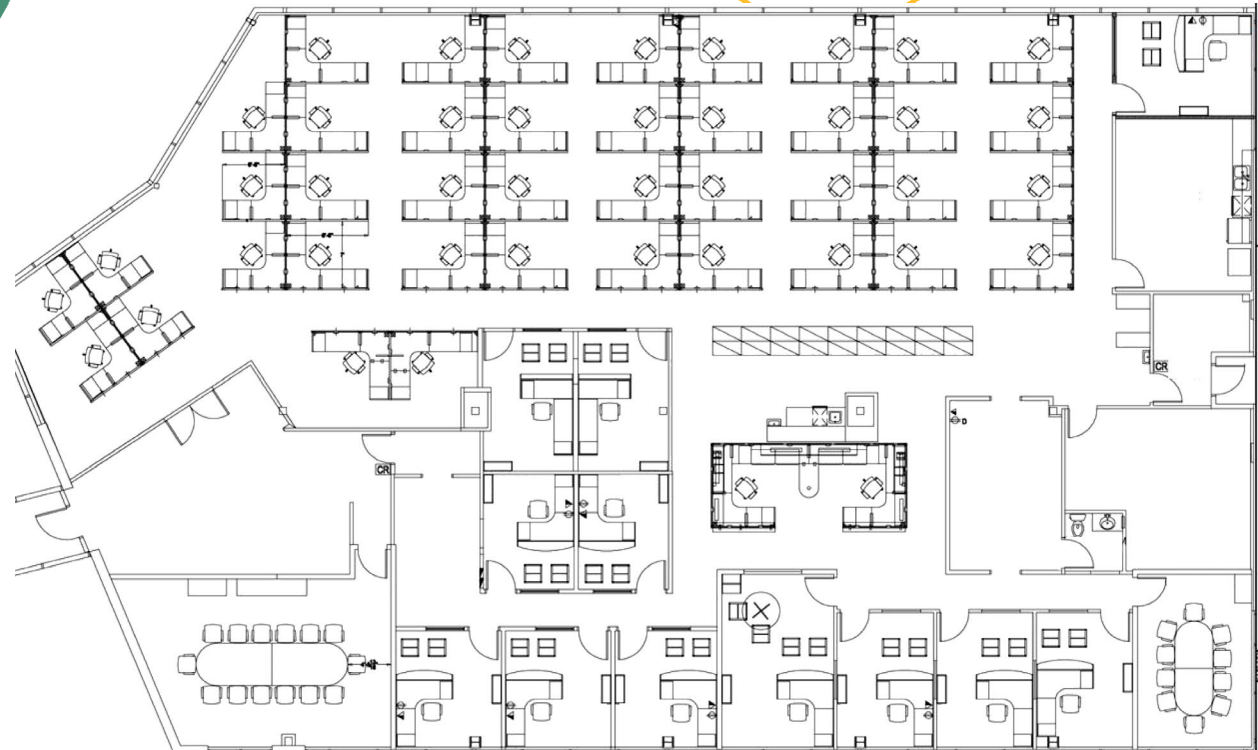
# 4400

*W Sample Rd*

Coconut Creek, FL

# TOWNSHIP LAZA

Suite 200 - 10,442 SF



**DEBORAH FINK**  
VICE PRESIDENT  
+1 954 331 1717  
[deborah.fink@cbre.com](mailto:deborah.fink@cbre.com)

© 2025 CBRE, Inc. All rights reserved. This information has been obtained from sources believed reliable but has not been verified for accuracy or completeness. You should conduct a careful, independent investigation of the property and verify all information. Any reliance on this information is solely at your own risk. CBRE and the CBRE logo are service marks of CBRE, Inc. All other marks displayed on this document are the property of their respective owners, and the use of such logos does not imply any affiliation with or endorsement of CBRE.

**CBRE**

# 4400

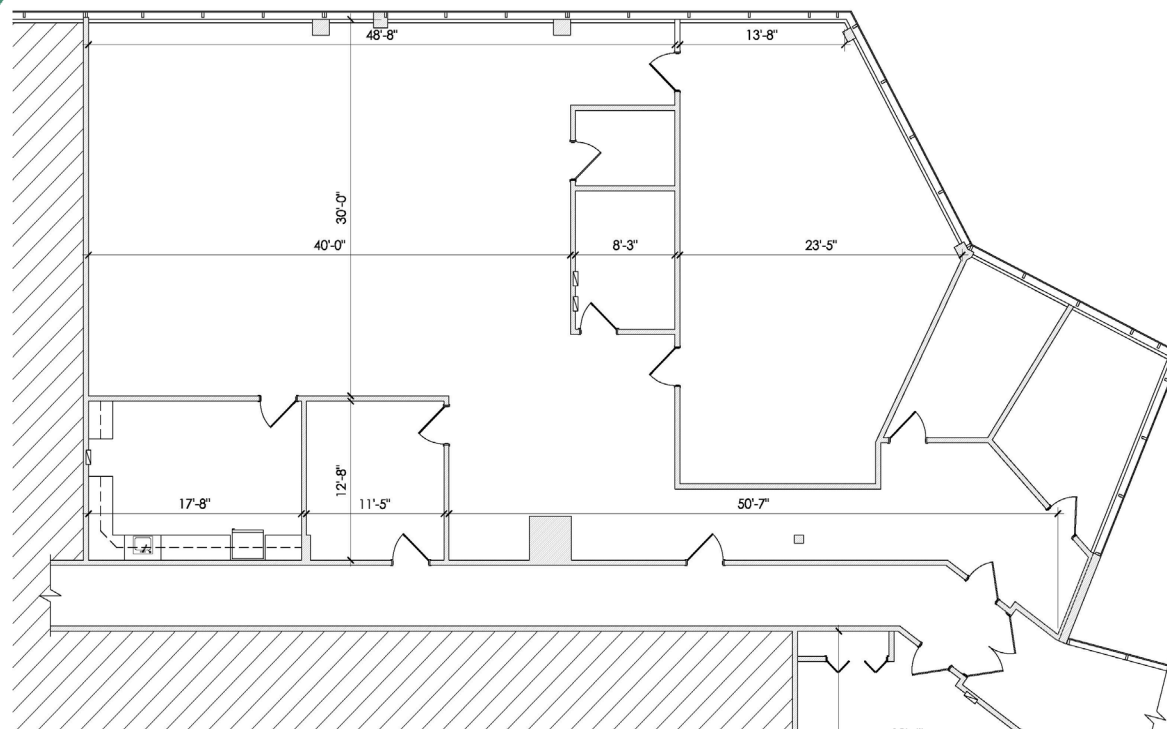
*W Sample Rd*

Coconut Creek, FL

# TOWNSHIP

Suite 236 - 3,971 SF

# PLAZA



**DEBORAH FINK**  
VICE PRESIDENT  
+1 954 331 1717  
[deborah.fink@cbre.com](mailto:deborah.fink@cbre.com)

© 2025 CBRE, Inc. All rights reserved. This information has been obtained from sources believed reliable but has not been verified for accuracy or completeness. You should conduct a careful, independent investigation of the property and verify all information. Any reliance on this information is solely at your own risk. CBRE and the CBRE logo are service marks of CBRE, Inc. All other marks displayed on this document are the property of their respective owners, and the use of such logos does not imply any affiliation with or endorsement of CBRE.

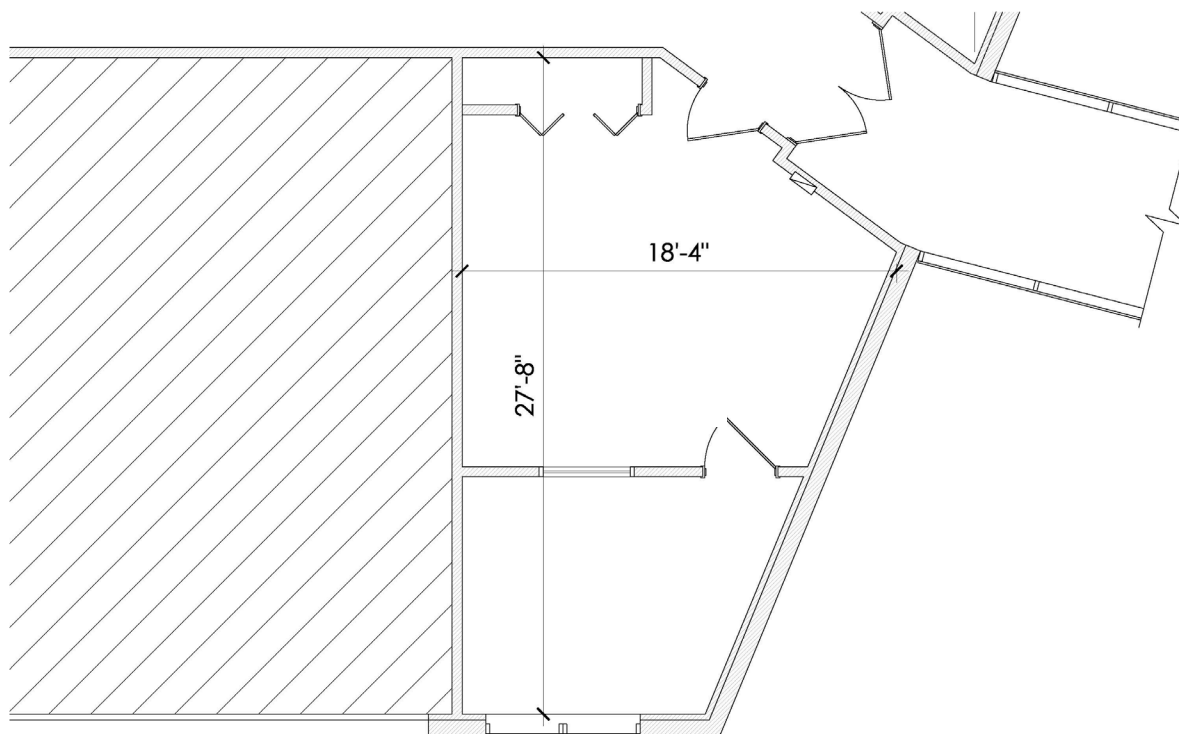
# CBRE

# 4400

*W Sample Rd*

Coconut Creek, FL

TOWNSHIP  
Suite 240 - 493 SF  
PLAZA



**DEBORAH FINK**  
VICE PRESIDENT  
+1 954 331 1717  
[deborah.fink@cbre.com](mailto:deborah.fink@cbre.com)

© 2025 CBRE, Inc. All rights reserved. This information has been obtained from sources believed reliable but has not been verified for accuracy or completeness. You should conduct a careful, independent investigation of the property and verify all information. Any reliance on this information is solely at your own risk. CBRE and the CBRE logo are service marks of CBRE, Inc. All other marks displayed on this document are the property of their respective owners, and the use of such logos does not imply any affiliation with or endorsement of CBRE.

**CBRE**

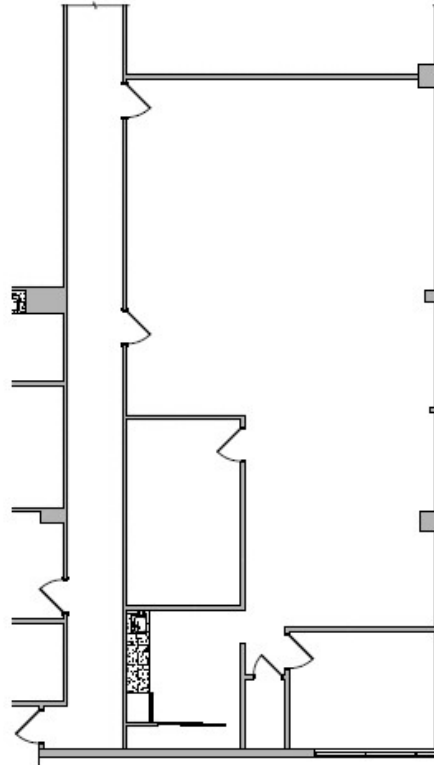
# 4400

*W Sample Rd*

Coconut Creek, FL

TOWNSHIP  
Suites 246-248 - 1,767 SF  
L  
A  
Z  
A

**DEBORAH FINK**  
VICE PRESIDENT  
+1 954 331 1717  
[deborah.fink@cbre.com](mailto:deborah.fink@cbre.com)



© 2025 CBRE, Inc. All rights reserved. This information has been obtained from sources believed reliable but has not been verified for accuracy or completeness. You should conduct a careful, independent investigation of the property and verify all information. Any reliance on this information is solely at your own risk. CBRE and the CBRE logo are service marks of CBRE, Inc. All other marks displayed on this document are the property of their respective owners, and the use of such logos does not imply any affiliation with or endorsement of CBRE.

**CBRE**