

37849-37881 INTERCHANGE DRIVE FARMINGTON HILLS, MICHIGAN

HI-TECH FOR SALE OR LEASE

For Sale: 66,036 Square Feet

For Lease: 16,863 Square Feet



**SIGNATURE
ASSOCIATES**
KNOW SIGNATURE | KNOW RESULTS

HALSTED COMMERCE PARK



PROPERTY FEATURES

- 16,863 square feet available for lease
- 10,063 square feet office
- 66,036 square foot building for sale
- 20' clear height
- (2) overhead doors, (1) shared truckwell
- Zoned IRO, Industrial/Research
- Includes backup generator
- Formerly occupied by DTE, this 16,863 sq. ft. space is in "white box" condition
- Corner suite offers abundance of window space
- The entire building could be sold and would include two tenants, Patterson Dental and JST



For more information, please contact:

JEFF LEMANSKI

(248) 359 0641

jlemanski@signatureassociates.com

CHRISTOPHER M. D'ANGELO

(248) 948 0109

cdangelo@signatureassociates.com

SIGNATURE ASSOCIATES

One Towne Square, Suite 1200

Southfield, MI 48076

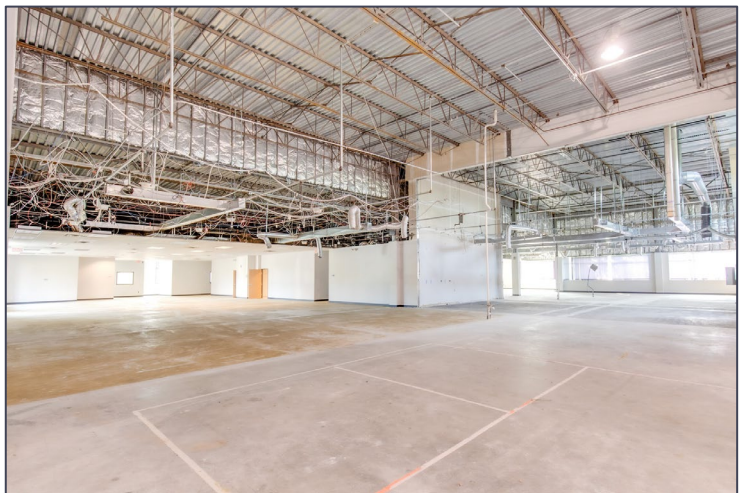
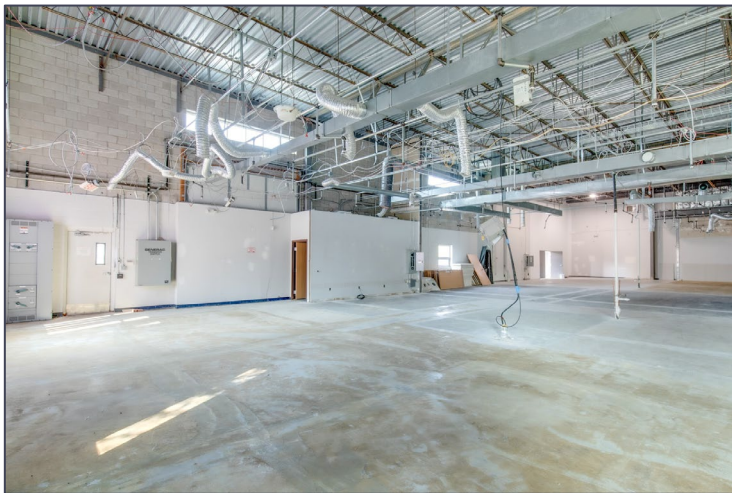
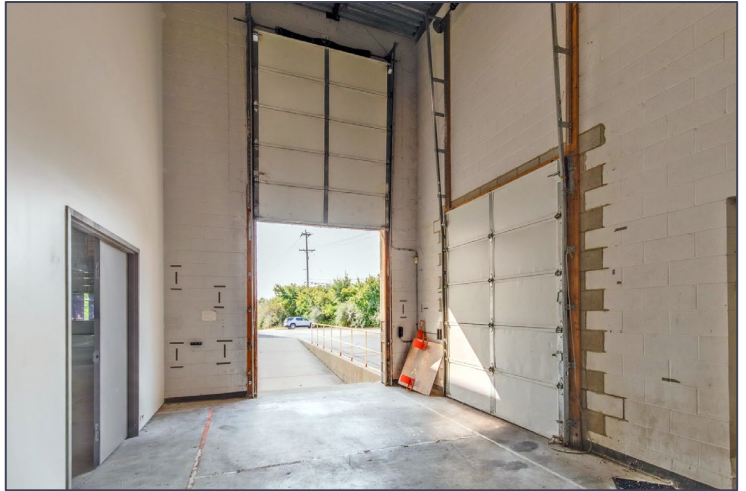
www.signatureassociates.com

37849-37881 Interchange Dr – Farmington Hills, Michigan

Hi-Tech For Sale or Lease

16,284
Square Feet
AVAILABLE

Additional Photos



For more information, please contact:

JEFF LEMANSKI

(248) 359 0641

jlemanski@signatureassociates.com

CHRISTOPHER M. D'ANGELO

(248) 948 0109

cdangelo@signatureassociates.com

SIGNATURE ASSOCIATES

One Towne Square, Suite 1200

Southfield, MI 48076

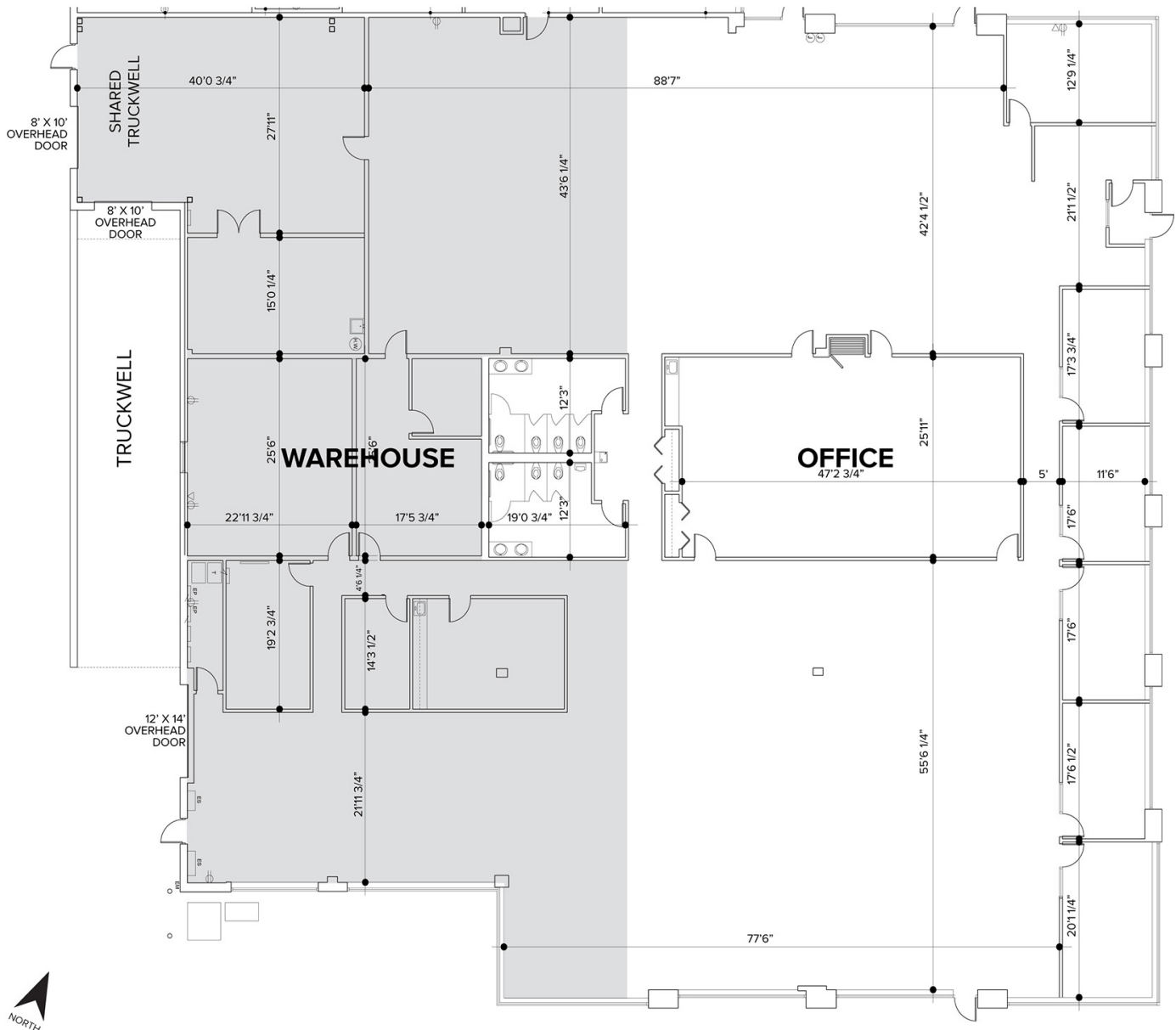
www.signatureassociates.com

37849-37881 Interchange Dr – Farmington Hills, Michigan

Hi-Tech For Sale or Lease

16,284
Square Feet
AVAILABLE

Floor Plan



For more information, please contact:

JEFF LEMANSKI

(248) 359 0641

jlemanski@signatureassociates.com

CHRISTOPHER M. D'ANGELO

(248) 948 0109

cdangelo@signatureassociates.com

SIGNATURE ASSOCIATES

One Towne Square, Suite 1200

Southfield, MI 48076

www.signatureassociates.com

37849-37881 Interchange Dr – Farmington Hills, Michigan

Hi-Tech For Sale or Lease

16,284
Square Feet
AVAILABLE

Aerial



For more information, please contact:

JEFF LEMANSKI
(248) 359 0641
jlemanski@signatureassociates.com

CHRISTOPHER M. D'ANGELO
(248) 948 0109
cdangelo@signatureassociates.com

SIGNATURE ASSOCIATES
One Towne Square, Suite 1200
Southfield, MI 48076
www.signatureassociates.com

Information is subject to verification and no liability for errors or omissions is assumed. Price is subject to change and listing withdrawal.