

FOR LEASE

# ±2,140 SF FORMER MEDICAL OFFICE

2701 Cowpath Road | Hatfield, PA 19440

\$19 PSF

## PROPERTY FEATURES / HIGHLIGHTS

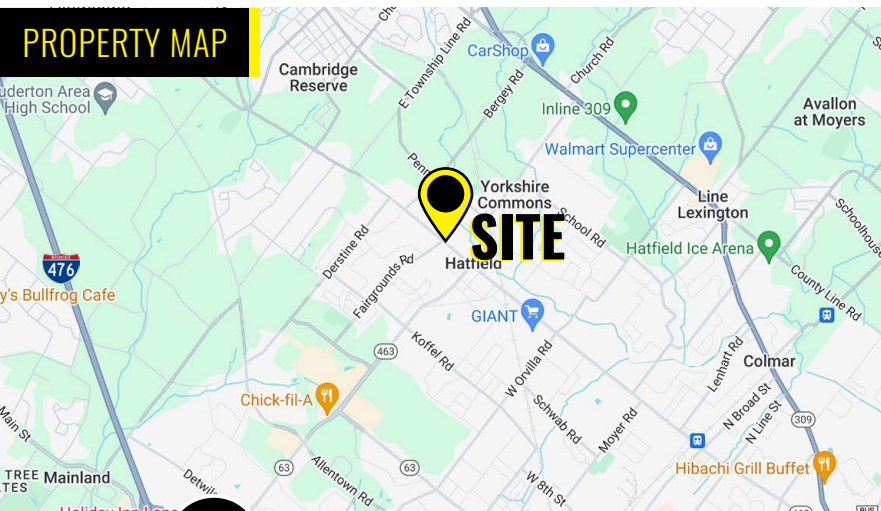
- ±2,140 SF Former Medical Office Available For Lease
- 8 private offices & 3 workstations
- Private Restrooms
- Private Parking in rear
- Street Signage
- Asking: \$19 PSF Gross Lease + Utilities

### DEMOGRAPHICS

	1 MILE	3 MILE	5 MILE
POPULATION	17,764	63,942	151,049
TOTAL HOUSEHOLDS	6,571	24,721	58,495
MEDIAN HHI	\$77,572	\$81,722	\$91,597
POPULATION GROWTH	+9.34%	+5.17%	+3.86%



### PROPERTY MAP

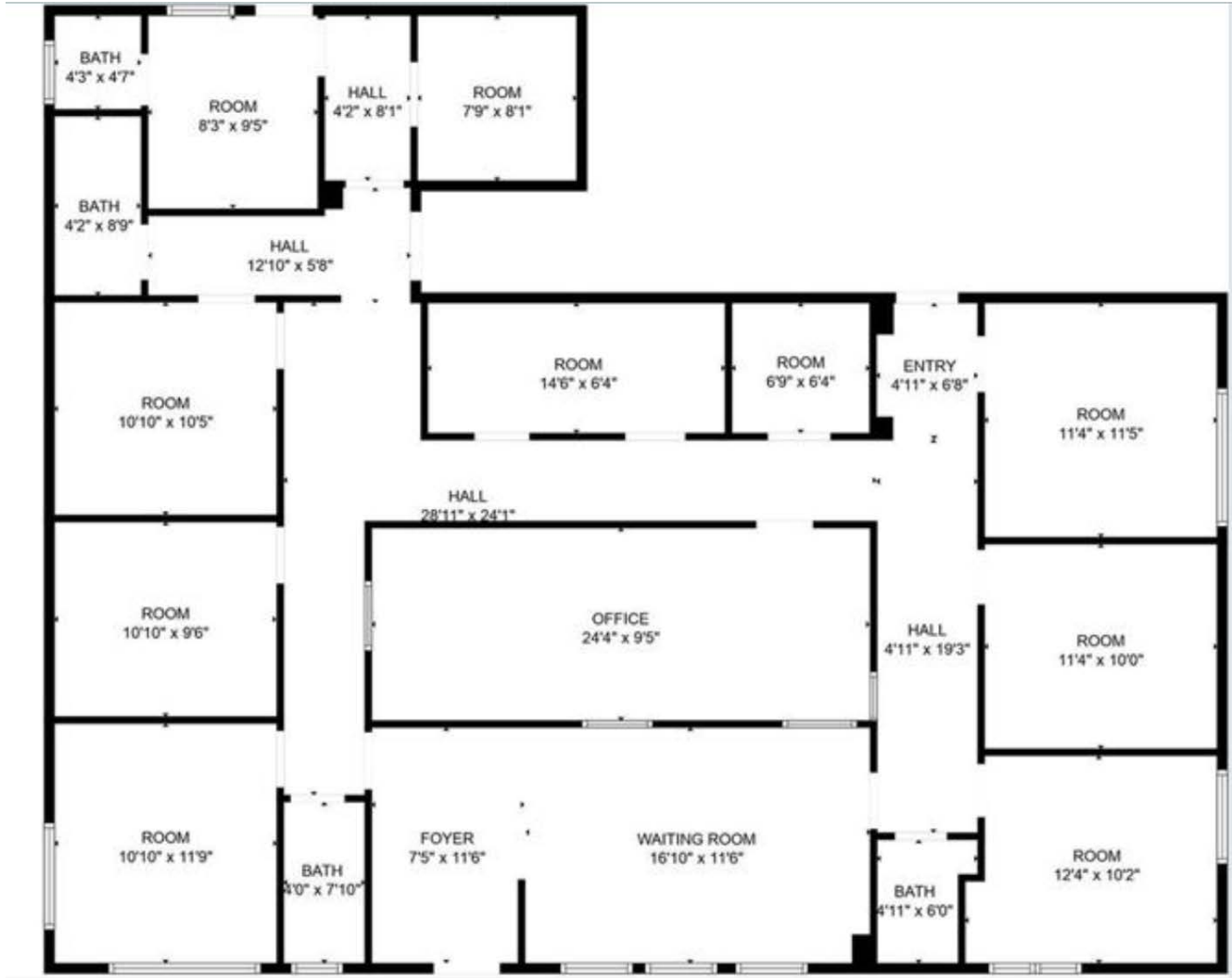


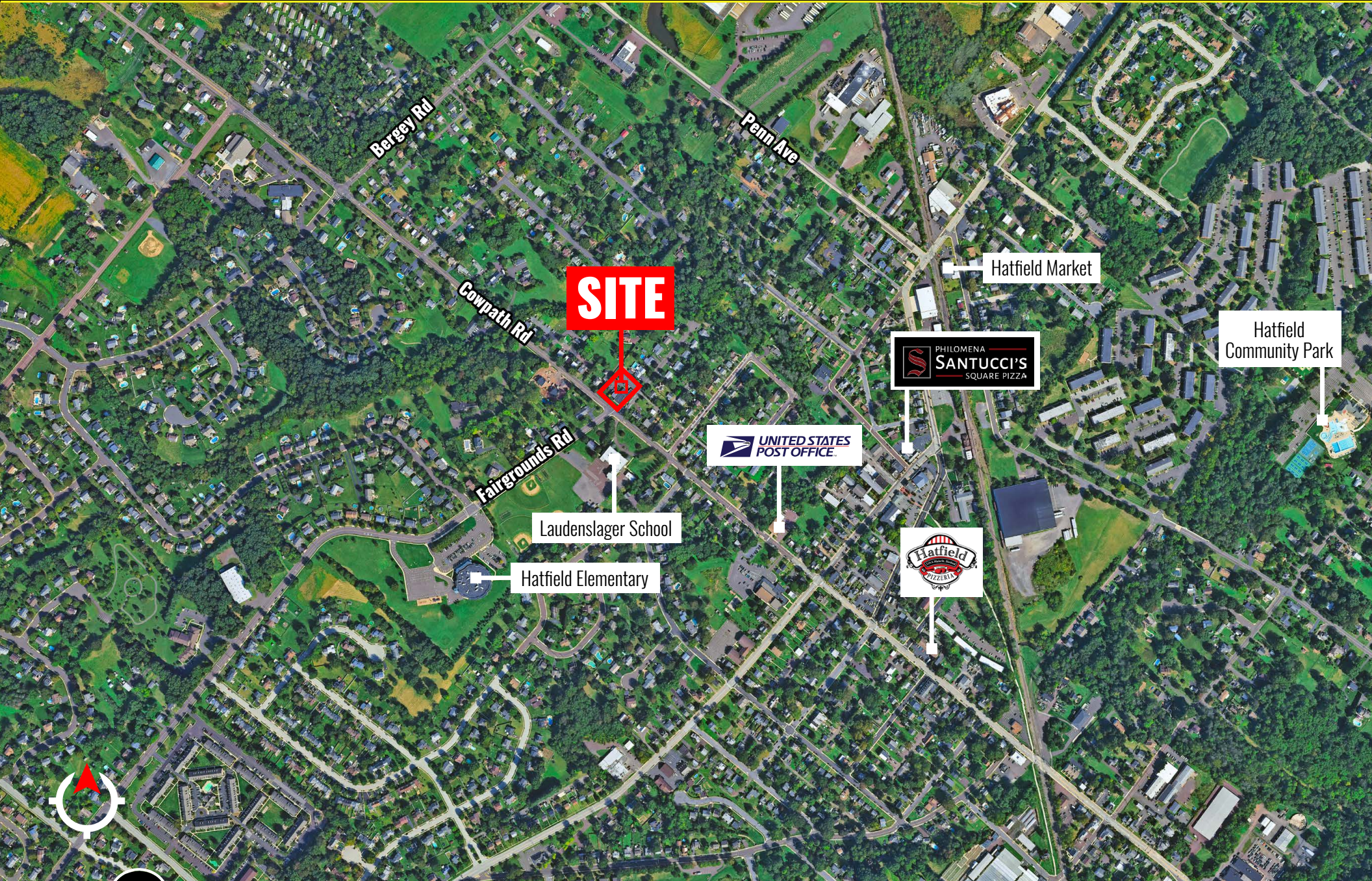
# INTERIOR PHOTOS

2701 COWPATH RD | HATFIELD, PA 19440

FOR LEASE







# ABOUT ZOMMICK MCMAHON COMMERCIAL REAL ESTATE

Zommick McMahon Commercial Real Estate, Inc. has been a Metro Philadelphia Area staple since its inception in 1949. The Company was founded by Joseph Zommick, and continues today with Ryan McMahon and his highly experienced staff. We are much more than just a real estate brokerage firm – we are a team of experienced, consummate professionals who are dedicated to superb customer service. Partner with us for support from some of the top commercial brokers in Pennsylvania, New Jersey and Delaware.

## SOME OF OUR SATISFIED CLIENTS



IRON HILL  
BREWERY & RESTAURANT

