



4,105 - 11,030 SF
SUBLEASE AVAILABLE
PROMINENT STREET LEVEL PRESENCE

900 G ST. NW

WASHINGTON, DC 20001

PROPERTY HIGHLIGHTS



900 G St. NW, Washington, DC 20001

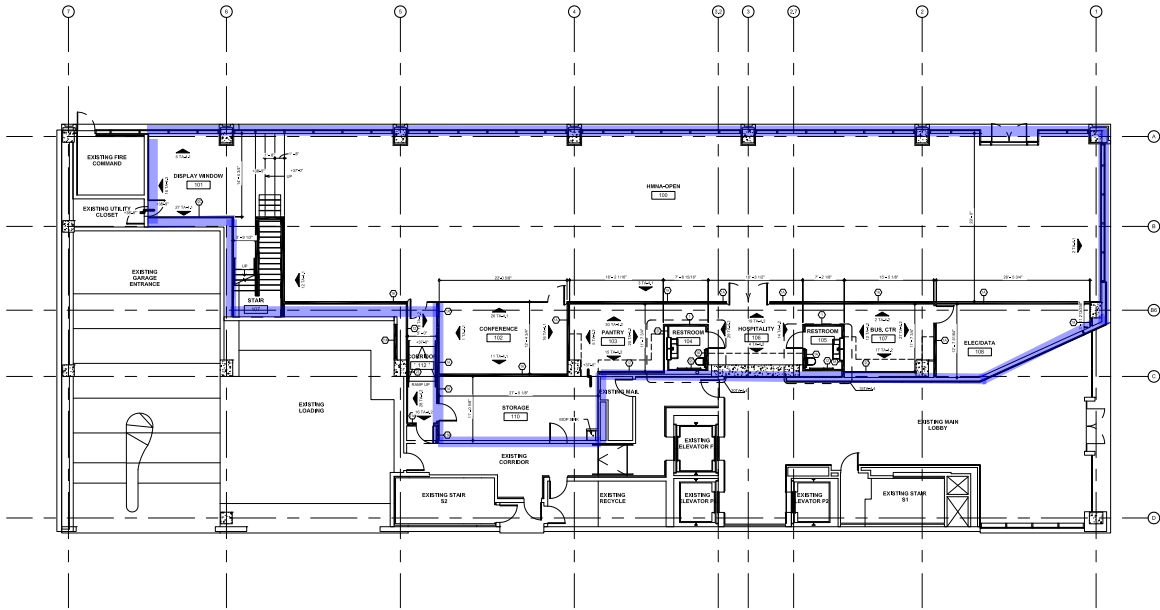
Premises:	4,105-11,030 SF (1st and 2nd Floor)	Prominent street level presence and entrance on corner of 9th and G
Term:	Through June 2026	Herman Miller furniture included
Availability:	ASAP	Interconnecting stairwell to 2nd floor



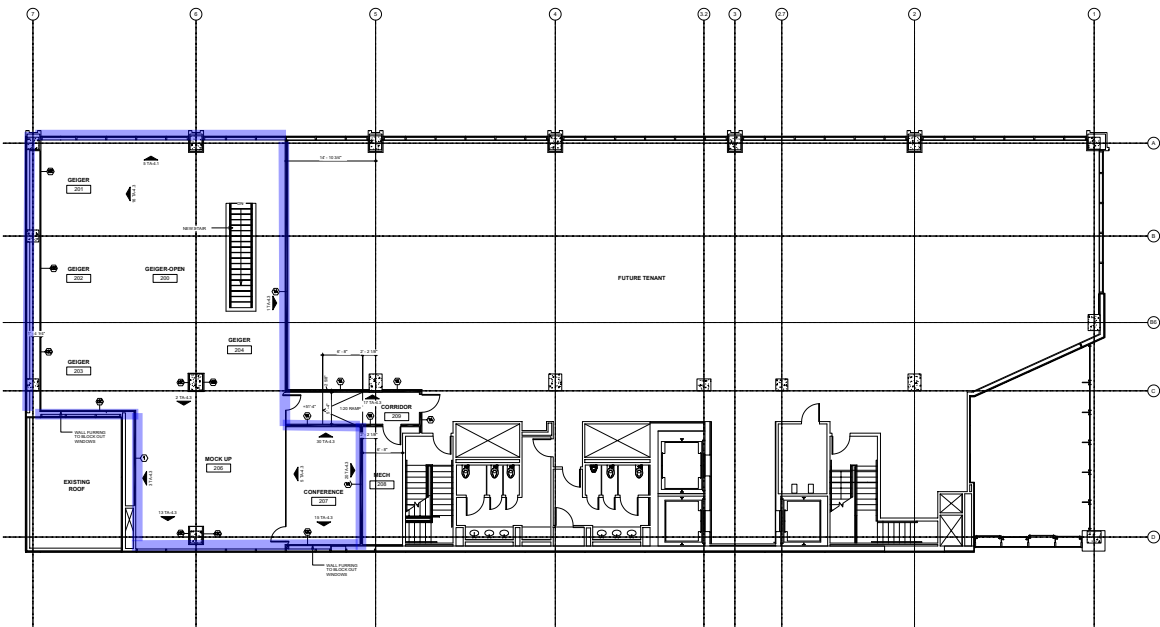
SITE PLAN



GROUND FLOOR



2ND FLOOR





FOR MORE INFORMATION, CONTACT:

George Men

Director

+1 202 407 8165

george.men@cushwake.com

Aaron Pomerantz

Executive Managing Director

+1 202 280 6993

aaron.pomerantz@cushwake.com

©2024 Cushman & Wakefield. All rights reserved. The information contained in this communication is strictly confidential. This information has been obtained from sources believed to be reliable but has not been verified. NO WARRANTY OR REPRESENTATION, EXPRESS OR IMPLIED, IS MADE AS TO THE CONDITION OF THE PROPERTY (OR PROPERTIES) REFERENCED HEREIN OR AS TO THE ACCURACY OR COMPLETENESS OF THE INFORMATION CONTAINED HEREIN, AND SAME IS SUBMITTED SUBJECT TO ERRORS, OMISSIONS, CHANGE OF PRICE, RENTAL OR OTHER CONDITIONS, WITHDRAWAL WITHOUT NOTICE, AND TO ANY SPECIAL LISTING CONDITIONS IMPOSED BY THE PROPERTY OWNER(S). ANY PROJECTIONS, OPINIONS OR ESTIMATES ARE SUBJECT TO UNCERTAINTY AND DO NOT SIGNIFY CURRENT OR FUTURE PROPERTY PERFORMANCE.