



MEDICAL OFFICE SPACE FOR LEASE

795 Primera Boulevard, Lake Mary, FL 32746

Contact: Dan Van Nada, CCIM
Vice President of Brokerage Services

E: Dan@FCPG.com
P: 407.872.0177 ext. 117

Contact: Ben Kuykendall
Sales & Leasing Associate

E: Ben@FCPG.com
P: 407.872.0177 ext. 131



For Lease: \$18.00 - \$24.00 / SF, NNN

Availability:

Parking Ratio: 5 / 1,000

Suite 1011: ± 2,192 SF

Suite 1021: ± 1,966 SF

Suite 1031: ± 3,040 SF

Suite 1021/1031: ± 5,006 SF

Max Contiguous Space: ± 7,198 SF

Turn key 2nd gen medical space (former ENT specialist) with exam rooms and nursing station, along with up to 4,158 SF of additional admin office space

Quick, easy access to Lake Mary Boulevard, I-4 and SR-417

Individual building signage available

Suite equipped with 3 Phase (120/208V 4W) power, allowing for heavier uses such as printing company

Upscale professional / medical office complex in prestigious Primera Office Park

Minutes from numerous restaurants and other amenities in immediate area



DEMOGRAPHICS

2023

1 Mile

3 Miles

5 Miles



Total Population

5,960

64,496

146,271



Average HH Income

\$124,508

\$128,298

\$114,072



Total Households

2,451

25,856

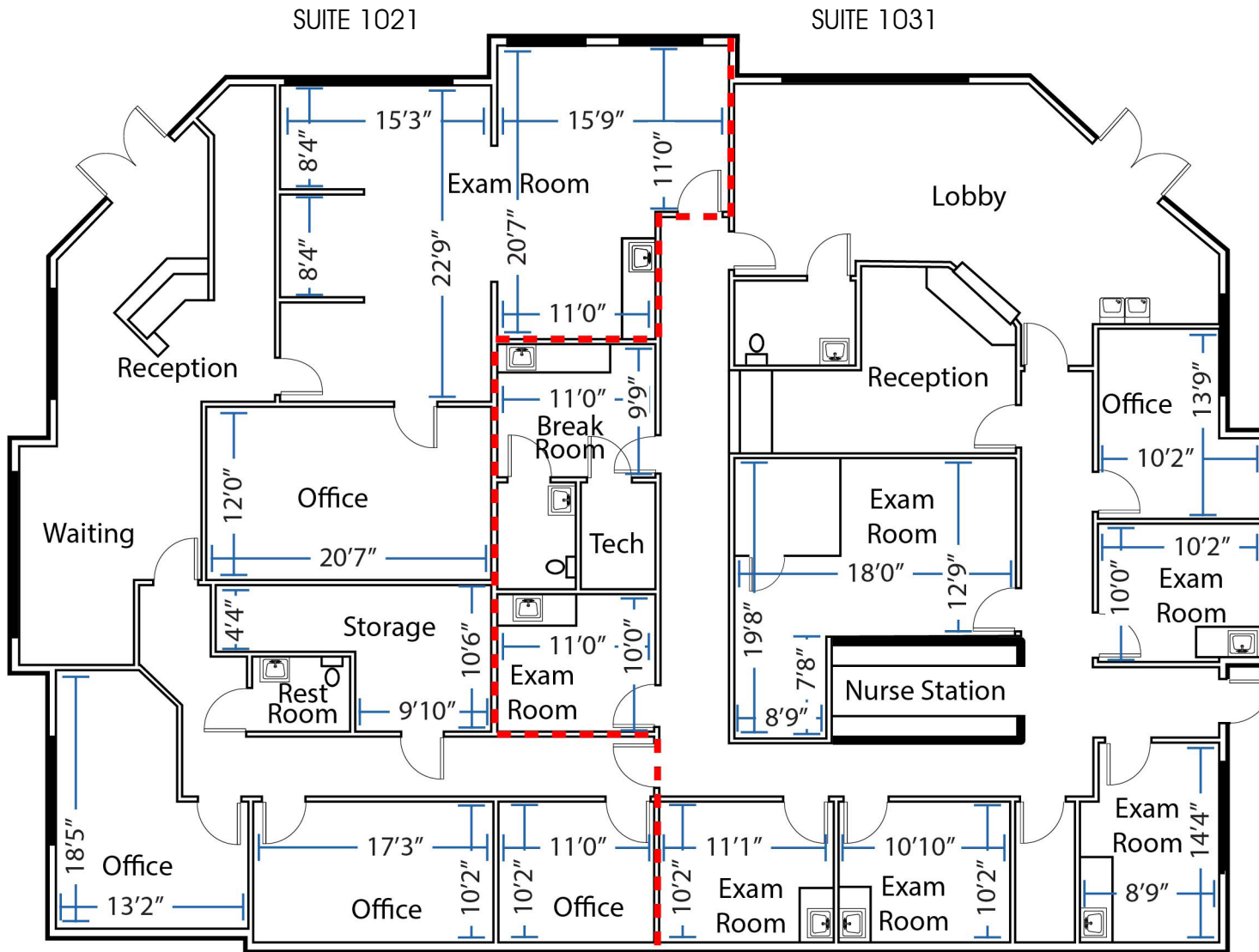
56,206

615 E. Colonial Dr., Orlando, FL 32803 Phone: 407.872.0209 www.FCPG.com

Information furnished regarding the subject property is believed to be accurate, but no guarantee or representation is made. References to square footage are approximate. This offering is subject to errors, omissions, prior sale or lease or withdrawal without notice. ©2023 First Capital Property Group, Inc., Licensed Real Estate Brokers & Managers.

SUITES 1021 & 1031 FLOOR PLAN

± 1,966 SF - 5,006 SF

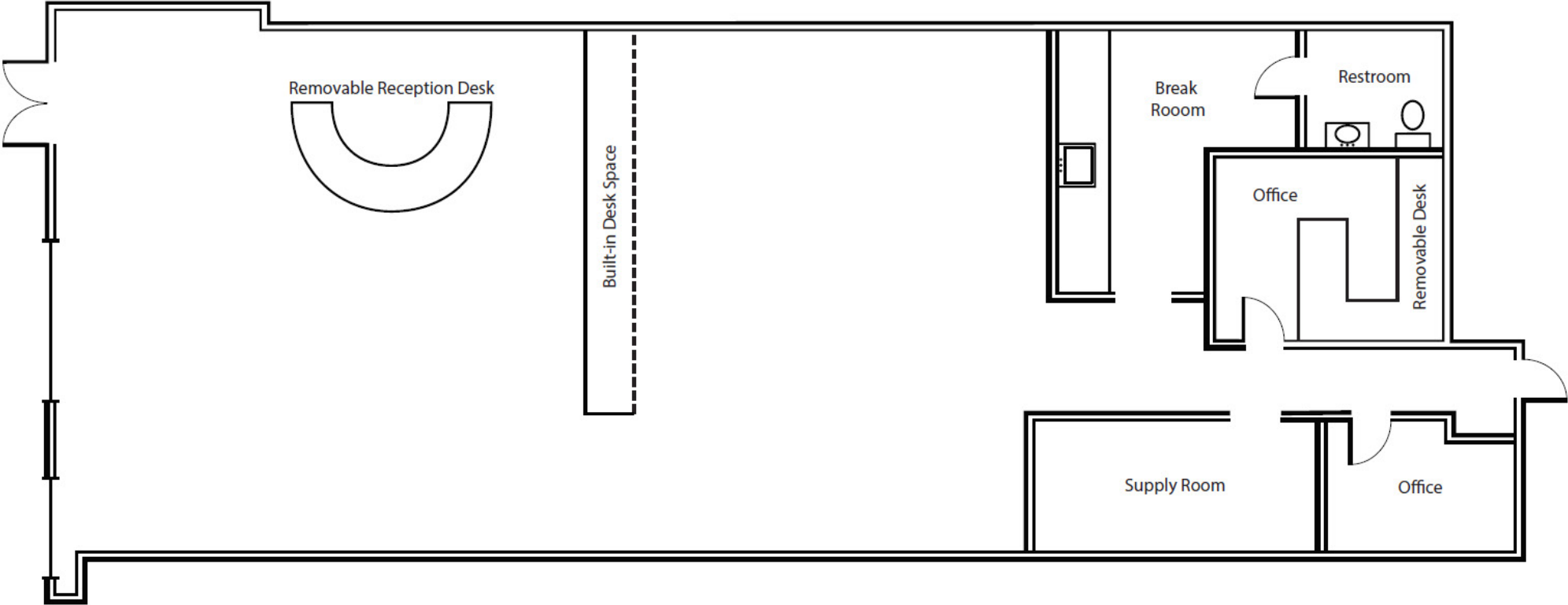


■ 615 E. Colonial Dr., Orlando, FL 32803 ■ Phone: 407.872.0209 ■ www.FCPG.com ■

Information furnished regarding the subject property is believed to be accurate, but no guarantee or representation is made. References to square footage are approximate. This offering is subject to errors, omissions, prior sale or lease or withdrawal without notice. ©2023 First Capital Property Group, Inc., Licensed Real Estate Brokers & Managers.

SUITE 1011 FLOOR PLAN

± 2,192 SF



■ 615 E. Colonial Dr., Orlando, FL 32803 ■ Phone: 407.872.0209 ■ www.FCPG.com ■

Information furnished regarding the subject property is believed to be accurate, but no guarantee or representation is made. References to square footage are approximate. This offering is subject to errors, omissions, prior sale or lease or withdrawal without notice. ©2023 First Capital Property Group, Inc., Licensed Real Estate Brokers & Managers.

F C
P G
FIRST CAPITAL
Property Group, Inc.
Commercial Real Estate Services