

**9,000 SF
11 + ACRES IOS
FOR LEASE**

2862

Wagner Road

Waterloo, IA

CBRE



EXECUTIVE SUMMARY

2862 Wagner Road is a functional industrial property in Waterloo, IA, well-suited for outdoor storage users with supporting warehouse operations. The site offers ample yard area, strong utility capacity, and efficient access to regional transportation corridors. Located within an established industrial market, the property presents a compelling opportunity for users or investors seeking outdoor storage functionality with upside potential in a supply-constrained market.

PROPERTY OVERVIEW

For Lease	\$15,000 Per Month NNN
Building	9,000 SF
Office/ Mezzanine	3,280 SF
Total Acres	15.15
Outdoor Storage	11 + AC
Year Built	1998
Drive - In doors	5 <ul style="list-style-type: none">• 2 (20' x 14')• 3 (18' x 13')

INTERIORS



EXTERIORS

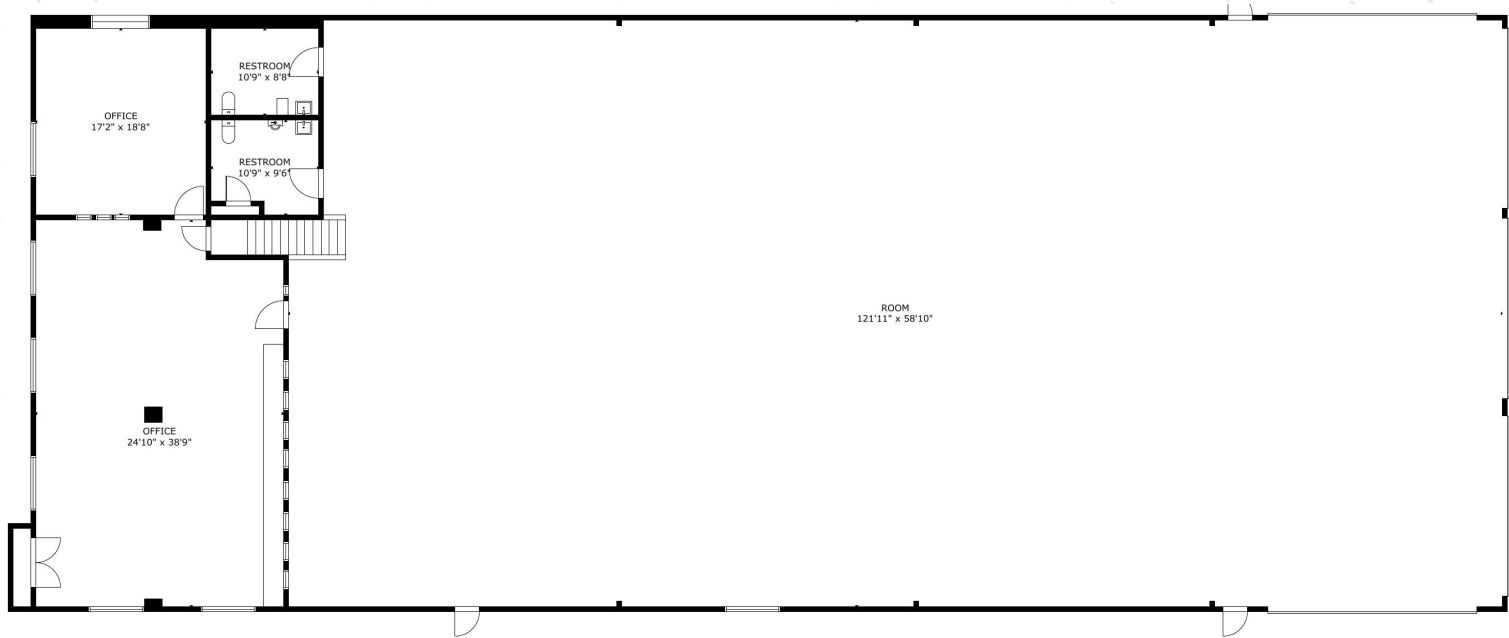


AERIAL

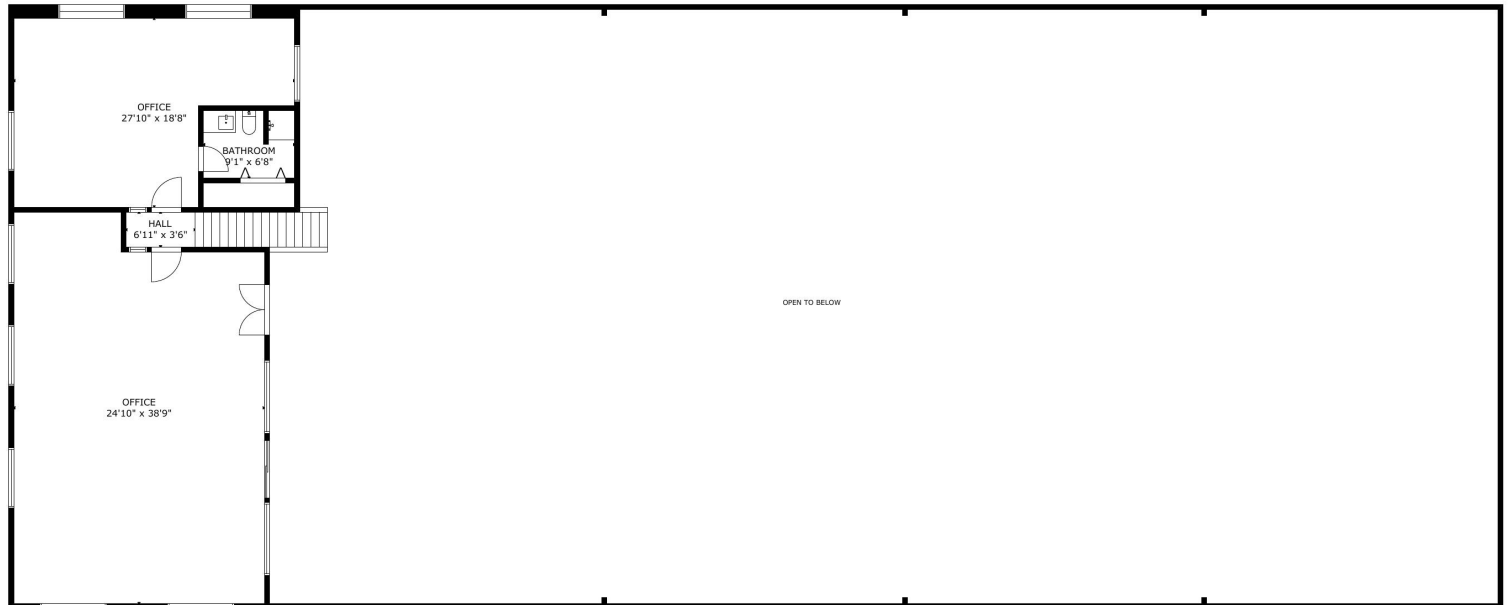


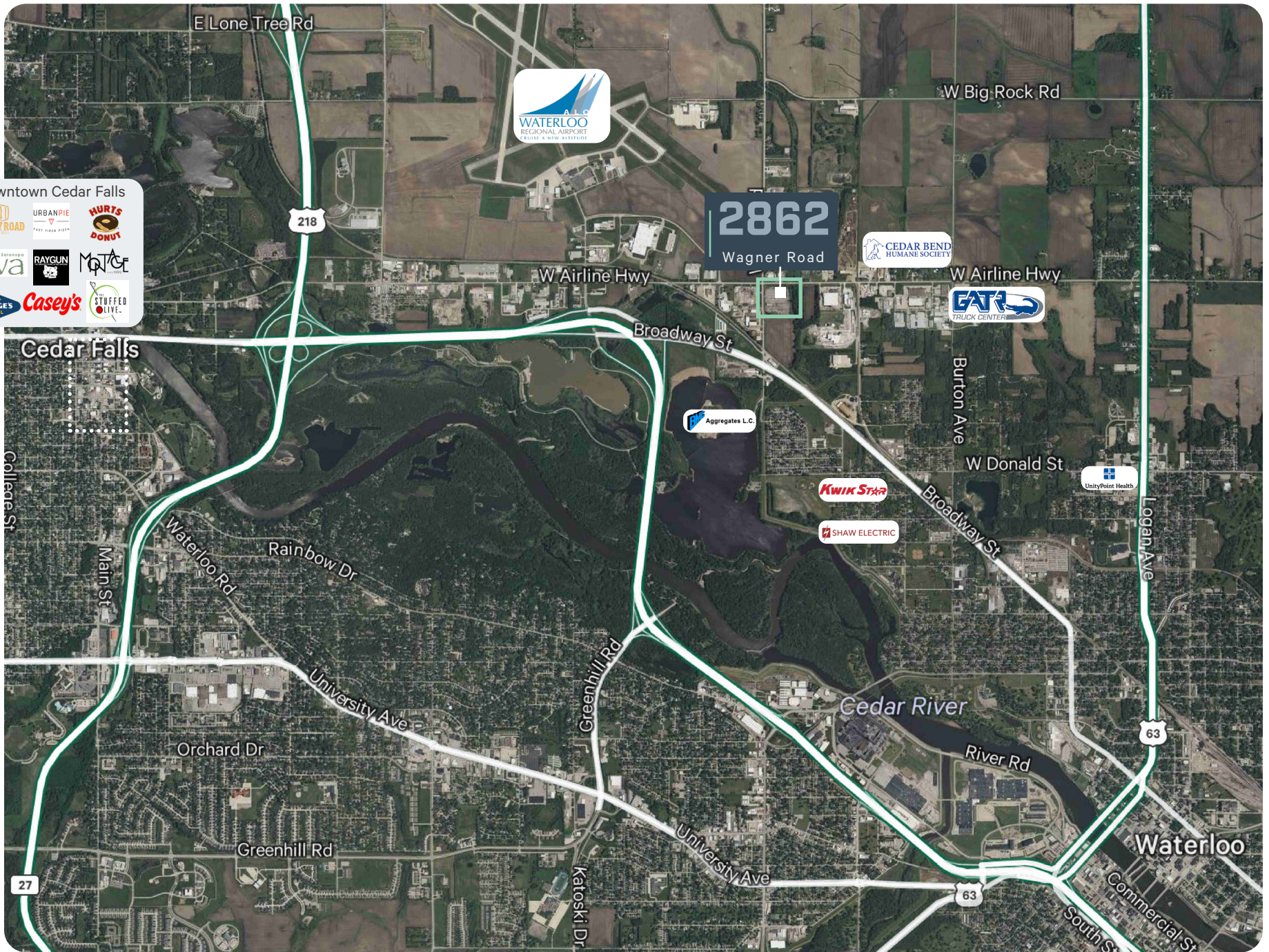
FLOOR PLAN

MAIN LEVEL



UPPER LEVEL





Downtown Cedar Falls

- WHISKEY ROAD
- URBANPIE
- HURTS DONUT
- Jiva
- RAYGUN
- MPTC
- GEORGE'S LOCAL
- Casey's
- STUFFED OLIVE

2862
Wagner Road

2862

Wagner Road



Harrison Kruse, SIOR, CCIM

First Vice President
+1 515 556 9168
harrison.kruse@cbre.com
Licensed in the State of Iowa

Ned Turner

Senior Associate
+1 515 371 0499
ned.turner@cbre.com
Licensed in the State of Iowa

Francesca Smith

Associate
+1 515 829 0556
francesca.smith@cbre.com
Licensed in the State of Iowa

© 2026 CBRE, Inc. All rights reserved. This information has been obtained from sources believed reliable but has not been verified for accuracy or completeness. You should conduct a careful, independent investigation of the property and verify all information. Any reliance on this information is solely at your own risk. CBRE and the CBRE logo are service marks of CBRE, Inc. All other marks displayed on this document are the property of their respective owners, and the use of such logos does not imply any affiliation with or endorsement of CBRE. Photos herein are the property of their respective owners. Use of these images without the express written consent of the owner is prohibited.

CBRE