

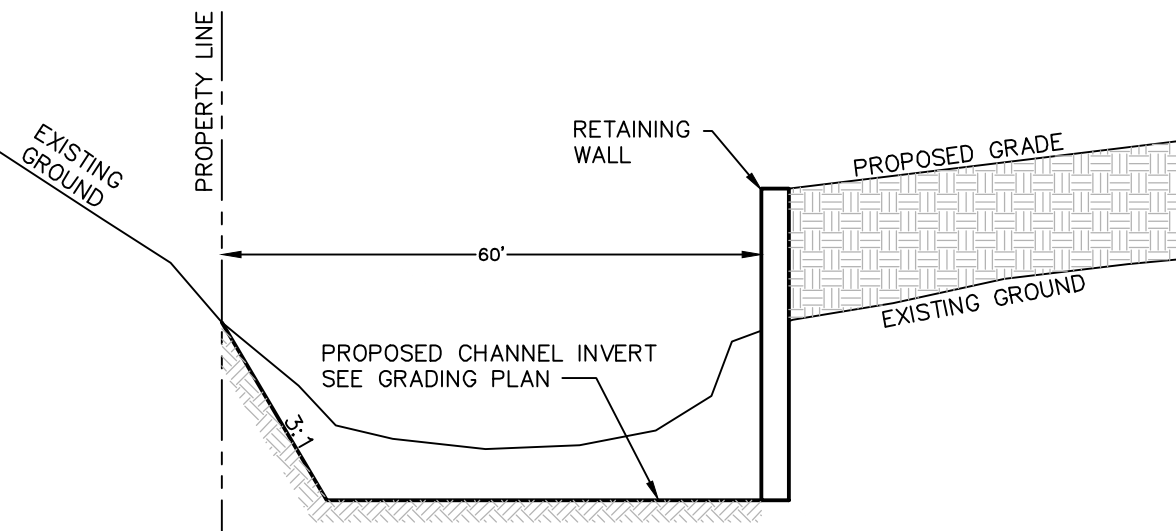
Cut/Fill Report

Generated: 2023-08-02 08:05:01
 By user: danaya
 Drawing: P:\732821\Design\Exhibits\732821\Design\Exhibits\230801 - Mass Grading Plan.dwg

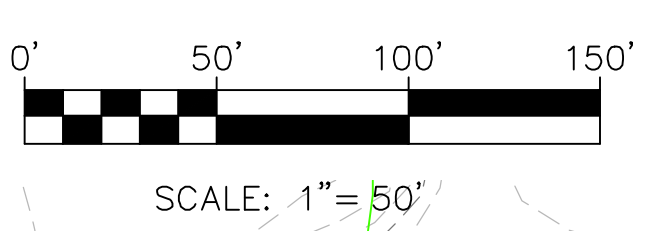
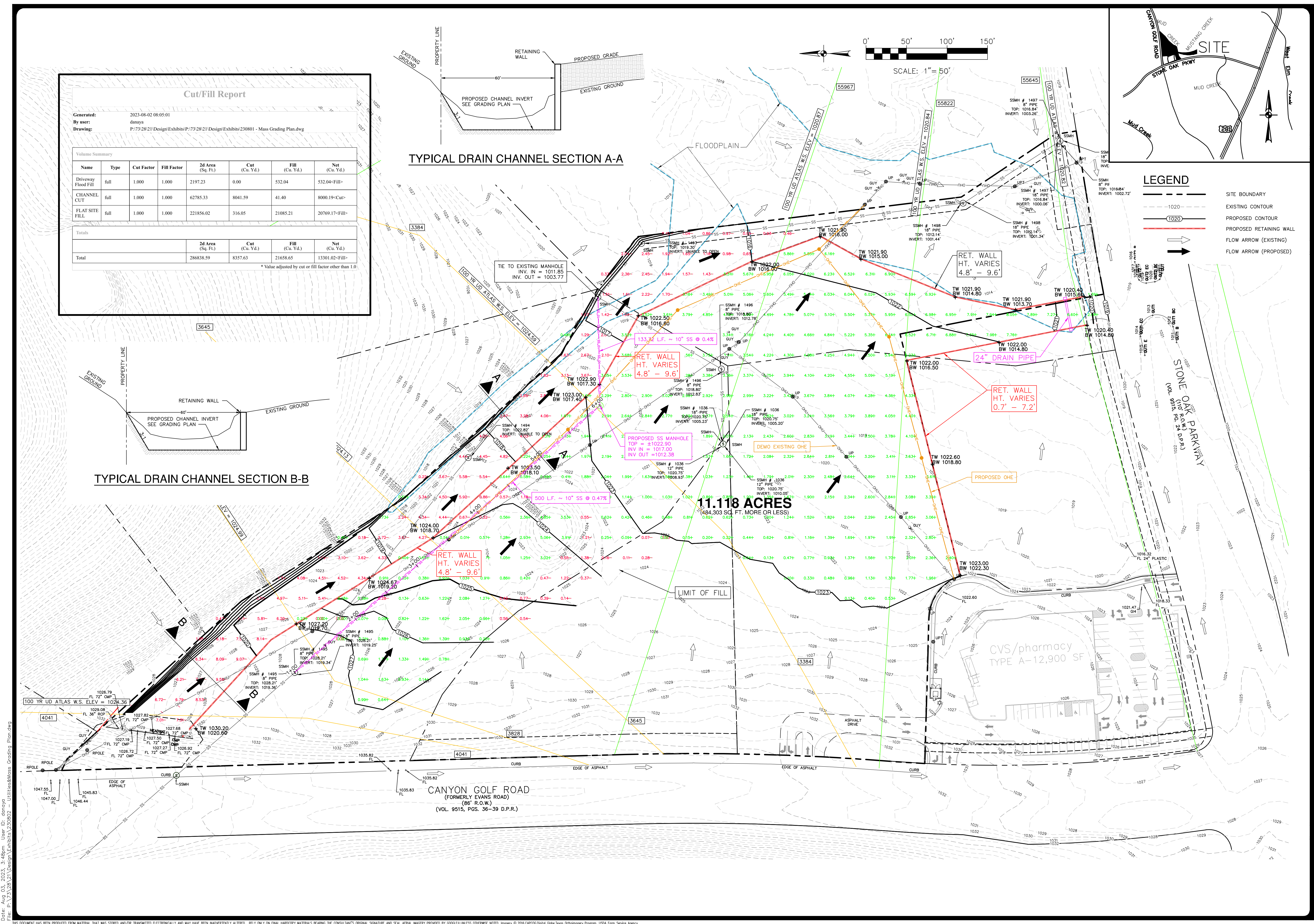
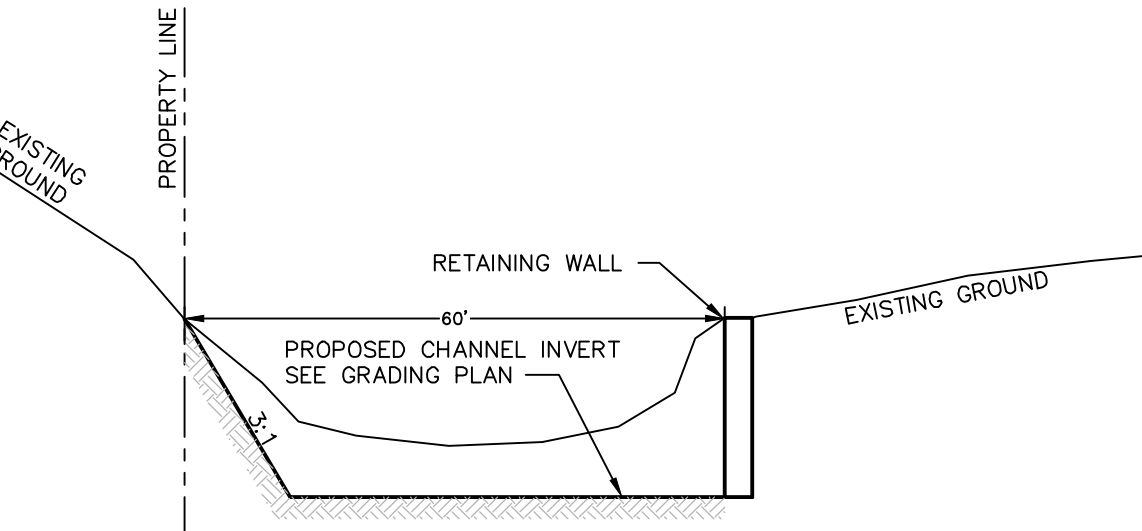
Volume Summary						
Name	Type	Cut Factor	Fill Factor	2d Area (Sq. Ft.)	Cut (Cu. Yd.)	Fill (Cu. Yd.)
Driveway Flood Fill	full	1.000	1.000	2197.23	0.00	532.04
CHANNEL CUT	full	1.000	1.000	62785.33	8041.59	41.40
FLAT SITE FILL	full	1.000	1.000	221856.02	316.05	21085.21
Totals				2d Area (Sq. Ft.)	Cut (Cu. Yd.)	Fill (Cu. Yd.)
Total				286838.59	8357.63	21658.65

* Value adjusted by cut or fill factor other than 1.0

TYPICAL DRAIN CHANNEL SECTION A-A



TYPICAL DRAIN CHANNEL SECTION B-B



LEGEND

- SITE BOUNDARY
- EXISTING CONTOUR
- PROPOSED CONTOUR
- PROPOSED RETAINING WALL
- FLOW ARROW (EXISTING)
- FLOW ARROW (PROPOSED)

DATE	NO. REVISION

PAPE-DAWSON ENGINEERS

SAN ANTONIO | AUSTIN | HOUSTON | FORT WORTH | DALLAS
 2000 HW LOOP 410 | SAN ANTONIO, TX 78213 | 210.375.9000
 TEPF FIRM REGISTRATION #070 | TEPF FIRM REGISTRATION #10028890

CANYON GOLF/STONE OAK PKWY RETAIL
 SAN ANTONIO, TEXAS

UTILITY & MASS GRADING PLAN
 8/03/2023

PLAT NO.	7328-21
JOB NO.	7328-21
DATE	AUGUST 2023
DESIGNER	GS
CHECKED	GS DRAWN DIA
SHEET	1 OF 1

Date: Aug 03, 2023, 3:48pm User: ID: danaya File: P:\732821\Design\Exhibits\732821\Design\Exhibits\230801 - Utilities&Mass Grading Plan.dwg

THIS DOCUMENT HAS BEEN PRODUCED FROM MATERIAL THAT WAS STORED AND/OR TRANSMITTED ELECTRONICALLY AND MAY HAVE BEEN INADVERTENTLY ALTERED. RELY ONLY ON FINAL HARDCOPY MATERIALS BEARING THE CONSULTANT'S ORIGINAL SIGNATURE AND SEAL. AERIAL IMAGERY PROVIDED BY GOOGLE/UNLESS OTHERWISE NOTED. Imagery © 2016, CAPOCO, Digital Globe, Texas Orthometry Program, USDA Farm Service Agency.