

541 NW Interpark Place

Port St. Lucie, FL 34987

±67,120 SF TOTAL WAREHOUSE/OFFICE ON ±3.9 ACRES AVAILABLE



PROPERTY HIGHLIGHTS

- + ±67,120 SF on ±3.9 Acres
- + Unit 1 - 18,400 SF Total
 - Office - 2,318 SF
 - Warehouse - 16,082 SF
- + Unit 2 - 48,720 SF Total
 - Office - 1,100 SF
 - Warehouse - 47,620 SF
- + Heavy Power – 1,800 amps, 120/208 Volt 3-Phase Power
- + Four (4) Dock Well Loading Doors
- + Clear Height - From 25' to 28'
- + Grade Level Loading
- + Additional Loading Can Be Added
- + ±5,500 SF Covered Overhang not Included in SF Calculation
- + Located in the St Lucie West Submarket – the Best Industrial/Warehouse Location in the Region

Contact Us

KIRK NELSON

Executive Vice President
+1 561 716 9936
kirk.nelson@cbre.com

ROBERT SMITH

Executive Vice President
+1 561 707 5558
robert.c.smith@cbre.com

Rental Rates from \$10.50 SF NNN
2025 Estimated Operating Expenses of \$2.98 SF

Property Owned & Managed By:



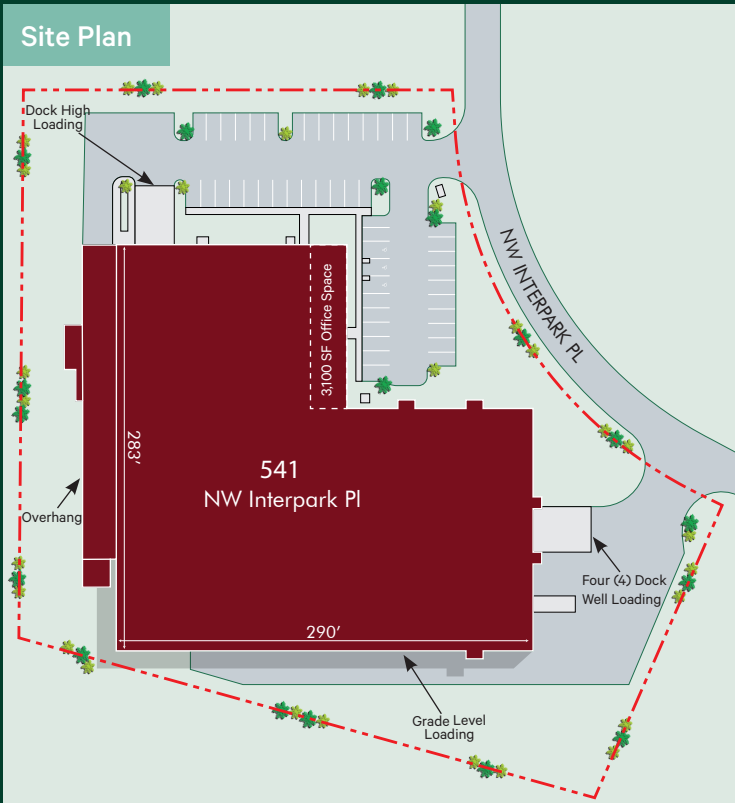
±67,120 SF Office/Warehouse on ±3.9 Acres
541 NW Interpark Place | Port St. Lucie, FL

Available

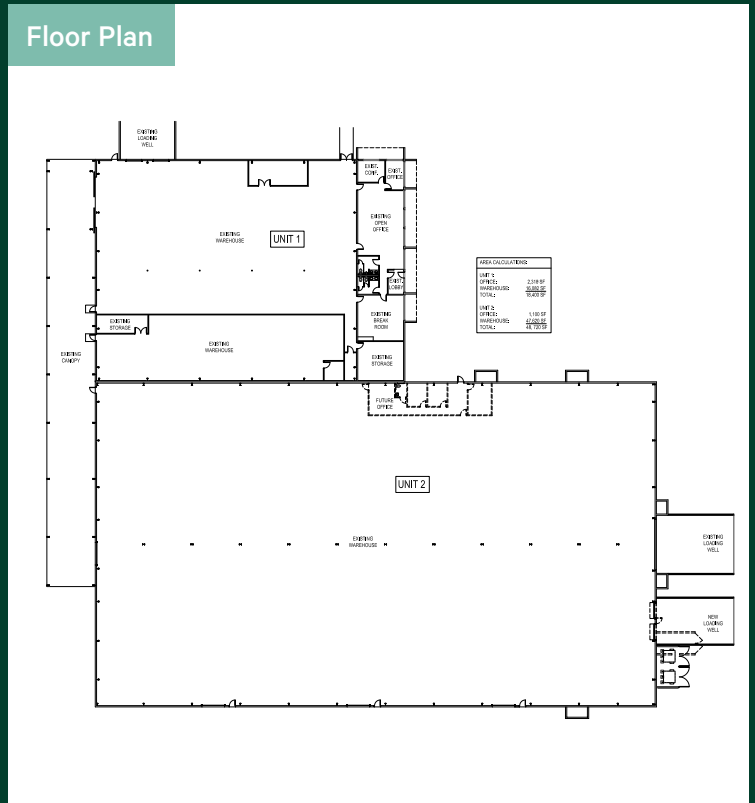
Additional Photos



Site Plan



Floor Plan



Contact Us

KIRK NELSON

Executive Vice President

+1 561 716 9936

kirk.nelson@cbre.com

ROBERT SMITH

Executive Vice President

+1 561 707 5558

robert.c.smith@cbre.com

© 2025 CBRE, Inc. All rights reserved. This information has been obtained from sources believed reliable, but has not been verified for accuracy or completeness. You should conduct a careful, independent investigation of the property and verify all information. Any reliance on this information is solely at your own risk. CBRE and the CBRE logo are service marks of CBRE, Inc. All other marks displayed on this document are the property of their respective owners, and the use of such logos does not imply any affiliation with or endorsement of CBRE. Photos herein are the property of their respective owners. Use of these images without the express written consent of the owner is prohibited.

CBRE