

PREMIUM OFFICE SPACE FOR RENT

STRONGSVILLE PROFESSIONAL BUILDING

11925 PEARL RD. STRONGSVILLE, OH 44136



broadvieweye center

Suite 104

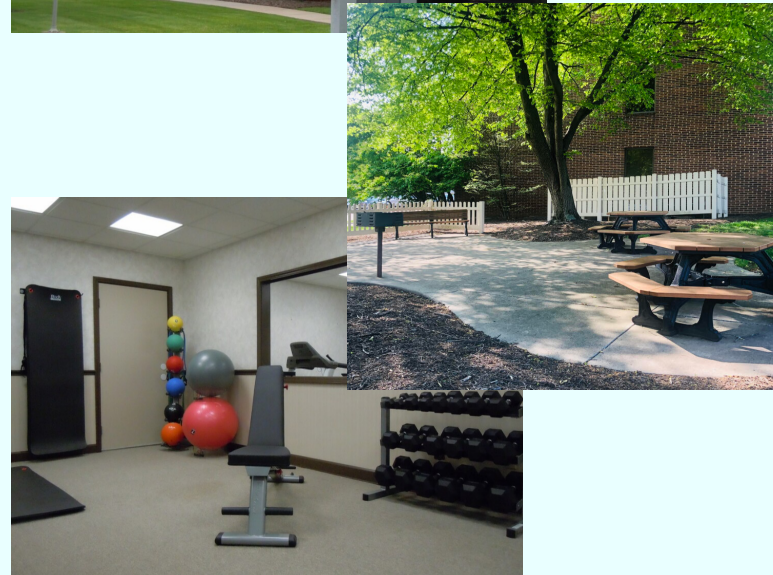
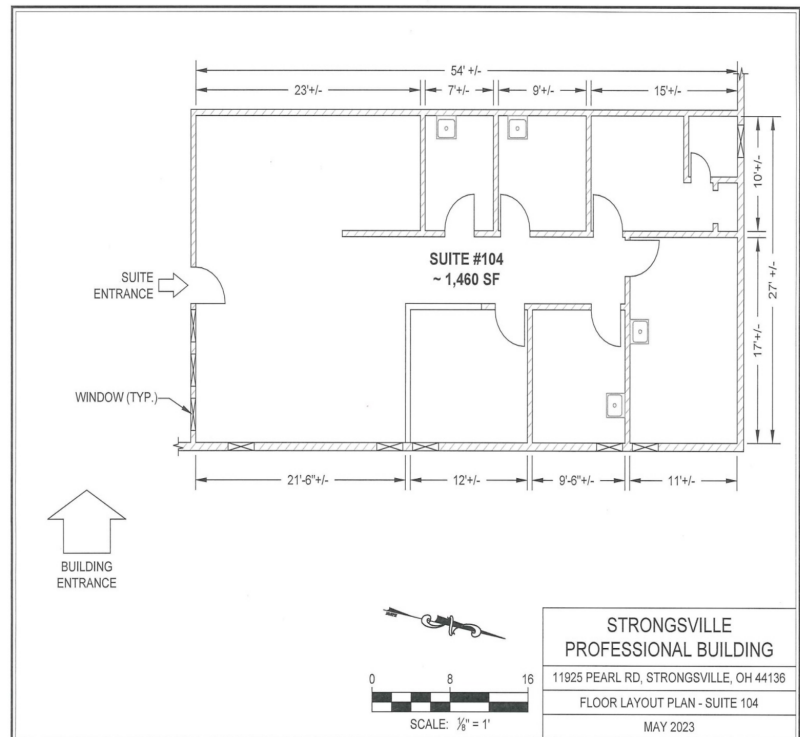
**1,460
SF**

Professional and medical offices with tremendous amenities. Includes conference room, fitness center, picnic area, handicap accessibility, elevator, building storage and utilities included.

Suite Includes: 4 Private Offices-Private Restroom-Hard Wood Floors



****Building Sign, Picnic Area, and Fitness Center*****



PLEASE CONTACT AT: 216-389-4739 (cell) EMAIL: coumanagementinc@gmail.com