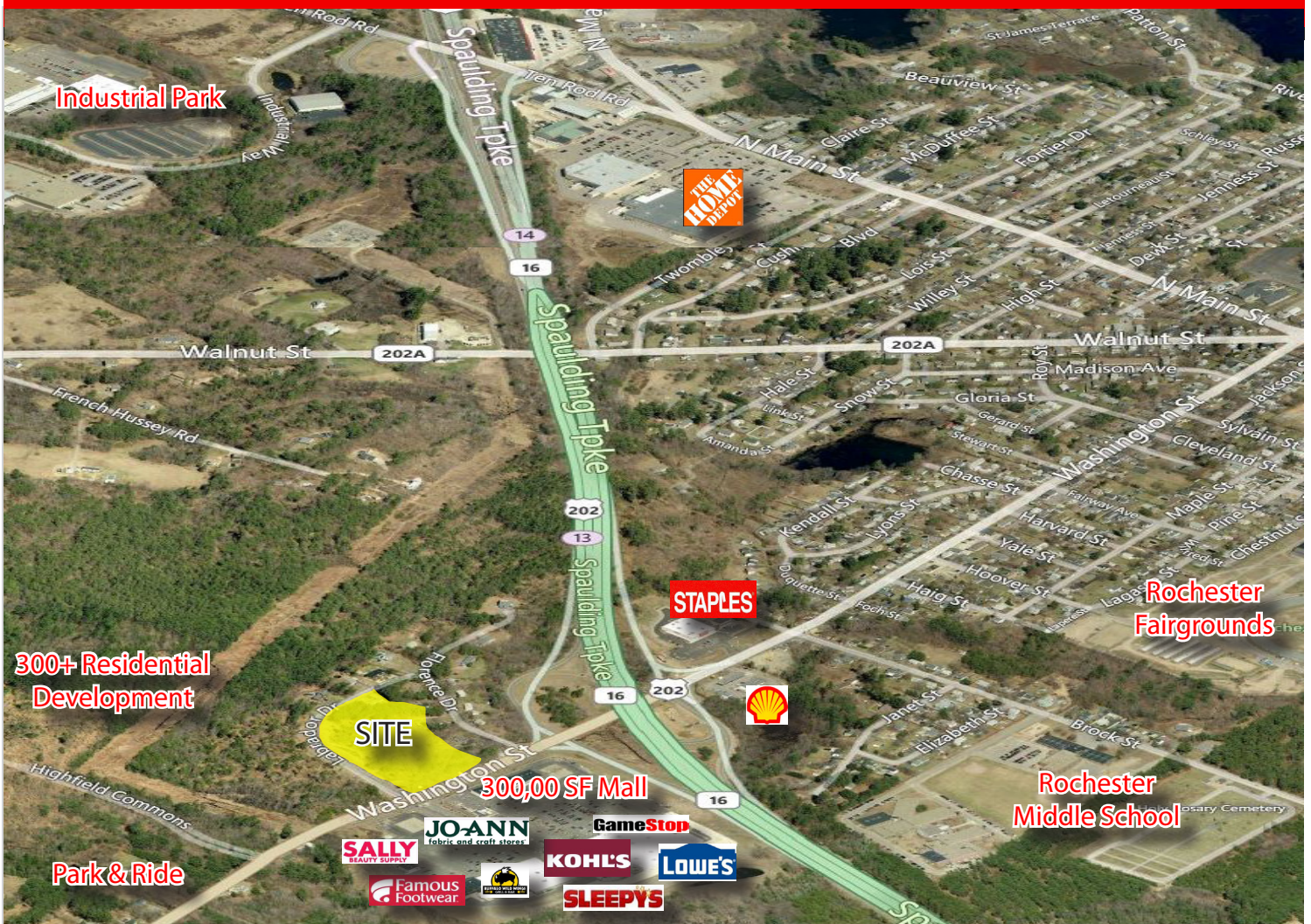


# POTENTIAL COMMERCIAL LOTS SALE/LEASE

5.9 Acres & 10.7 Acres

Exit 13, Rochester, NH



## Route 202 Washington Street, Rochester, NH

- Across from 304,000 SF Mall
- Map 130, Lot 43 (5.9 acres)
- Map 130, Lot 43-1 (10.7 acres)
- City water, sewer, natural gas
- Area residential: Planned 340 units abutting
- Frontage: 730' (Route 202)

**Owner will Lease or build-to-suit!**

### Contact:

Jean Kane:

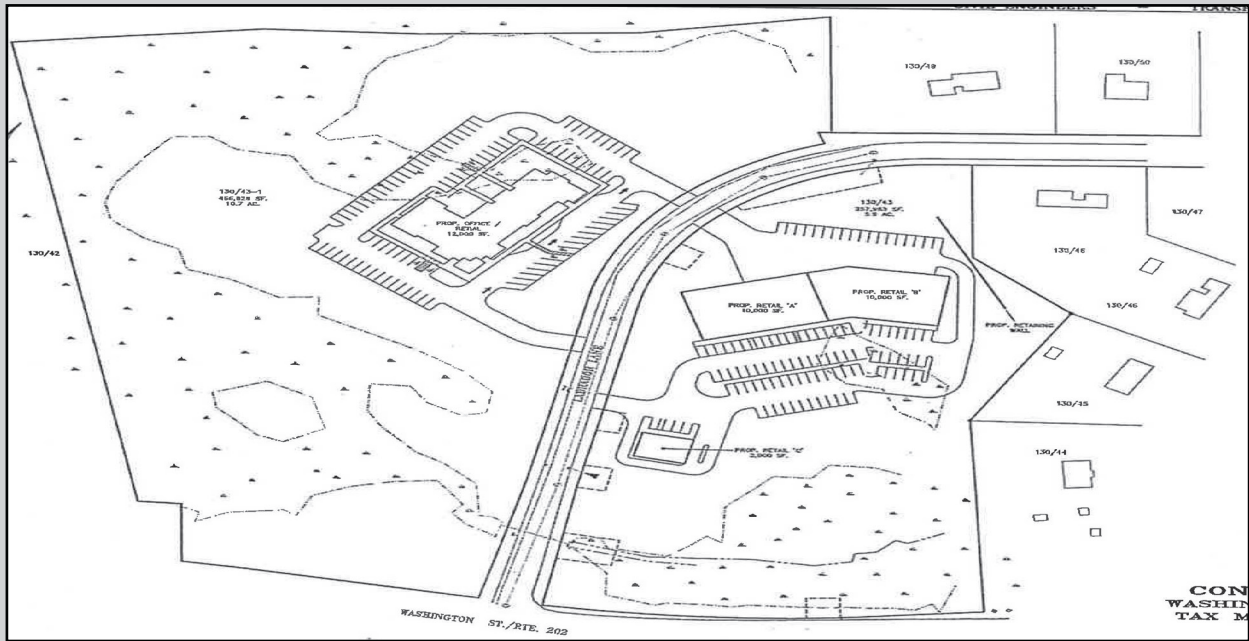
603.430.4000, [jean@netkane.com](mailto:jean@netkane.com)



603.430.4000 [netkane.com](http://netkane.com)



# Conceptual Site Plan



## Area Businesses:

- Lowes
- Kohl's
- Home Depot
- Medical Office
- Staples

## Traffic Count:

Spaulding Turnpike (Route 16) -  
33,200 VPD

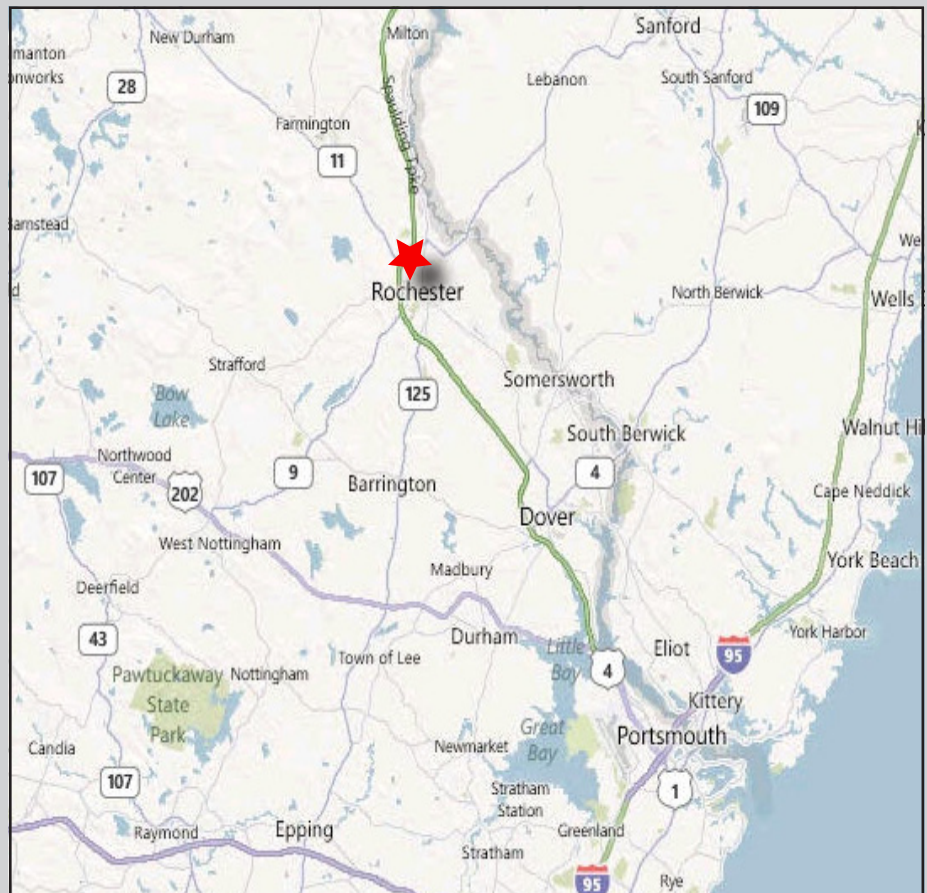
## Demographics:

### Population:

5 Miles:	36,392
10 Miles:	84,225
15 Miles:	188,473

### Household Income:

5 Miles:	\$50,684
10 Miles:	\$58,758
15 Miles:	\$62,439



## Contact:

Jean Kane:  
603.430.4000, [jean@netkane.com](mailto:jean@netkane.com)