

*South  
Park*  
PLAZA

*1, 2 & 3 SOUTH PARK CIRCLE*

*CHARLESTON, SC 29407*

# SOUTH PARK *PLAZA*

CLASS A OFFICE SPACE AVAILABLE FOR LEASE

**CHARLES S. CARMODY**

Senior Vice President  
D +1 843 577 1155  
M +1 843 514 1111  
[charles.carmody@cbre.com](mailto:charles.carmody@cbre.com)

**RYAN CARMODY**

Vice President  
D +1 843 577 1162  
M +1 843 303 7689  
[ryan.carmody@cbre.com](mailto:ryan.carmody@cbre.com)



# CLASS A OFFICE

Three building office complex on a 10.82 acre site. Large, dedicated parking field. Located at the intersection of I-526, Hwy 17 and Hwy 7 in front of the Citadel Mall. Prominently visible to 38,000 daily travelers on I-526. Within walking distance to many restaurants and businesses. Leases are full service and landlord will consider sub-dividing.

South Park  
PLAZA

*M O V E - I N  
R E A D Y*



*S*unning lobby & outdoor spaces! Tradition of being nearly fully leased. Close to retailers, interstate access and growing businesses.







# SOUTHPARK

- **Lease Rate: \$24.00/RSF Full Service**
- **Class A office space**
- **Landlord will consider sub-dividing**
- **Excellent visibility and access to highways in a high-growth area of West Ashley**
- **Ample free parking**

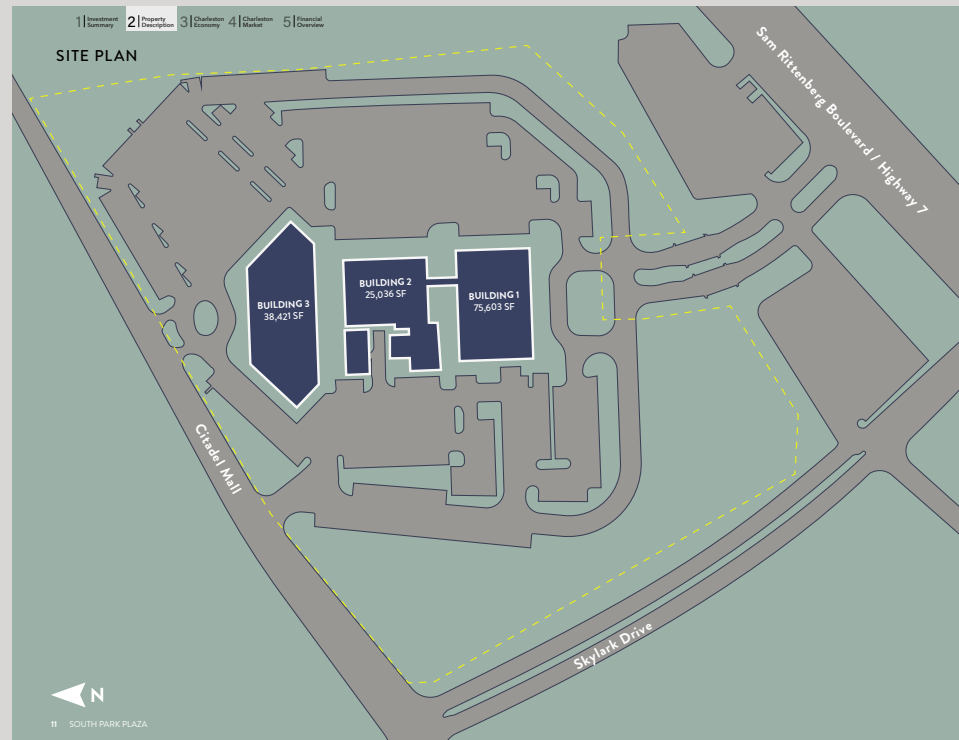
- **+/- 5,000 - 9,275 SF available**
- **Last remaining space in building**

***1, 2 & 3 SOUTH PARK CIRCLE***  
***CHARLESTON, SC 29407***



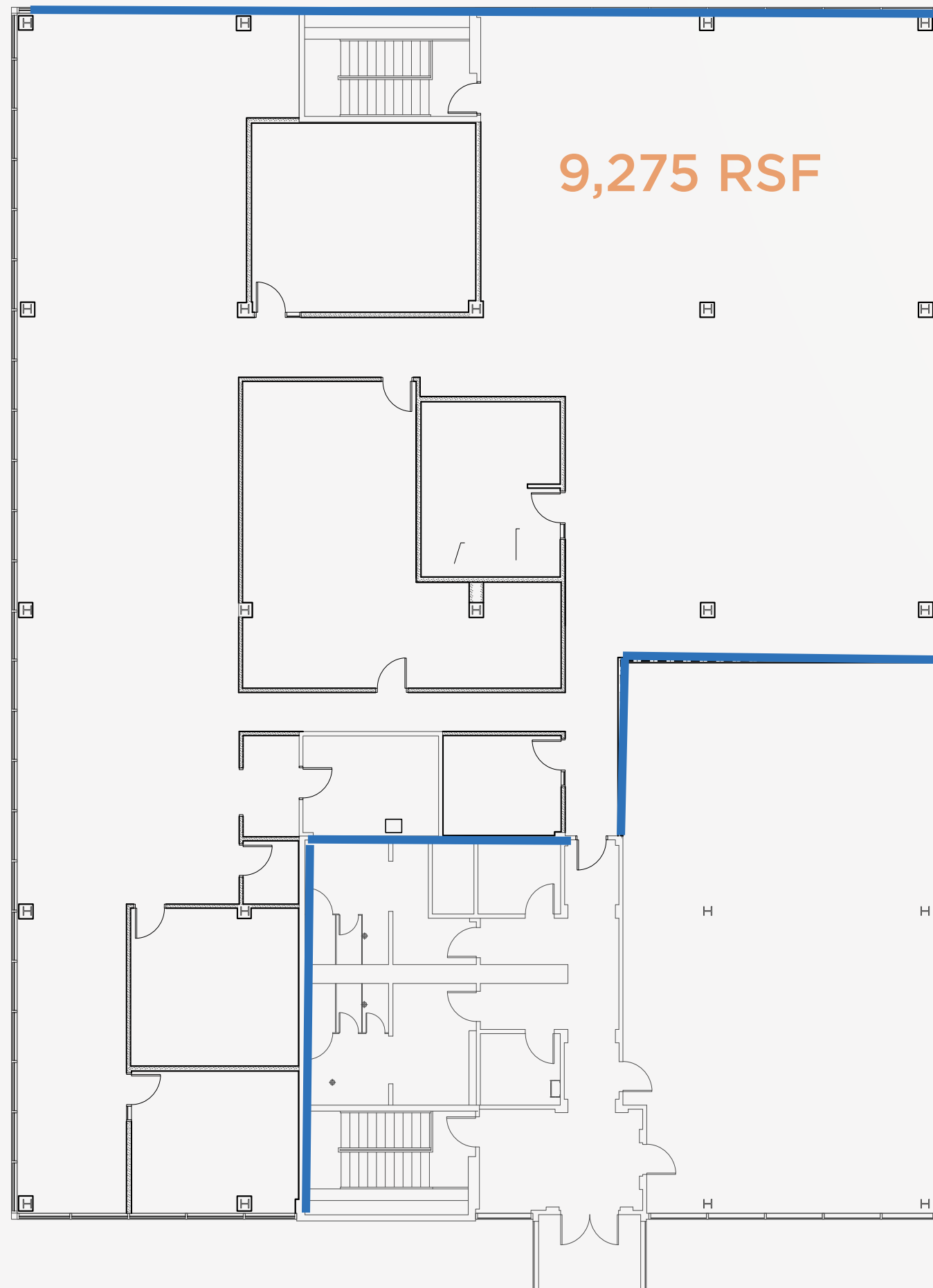


# AREA MAP





# BUILDING 2



9,275 RSF

Suite 200  
– 2 South Park Circle  
– 9,275 SF  
– Second floor space

*1, 2 & 3 SOUTH PARK CIRCLE*

*CHARLESTON, SC 29407*

Please contact the leasing team for information:

**CHARLES S. CARMODY**

Senior Vice President

D +1 843 577 1155

M +1 843 514 1111

[charles.carmody@cbre.com](mailto:charles.carmody@cbre.com)

**RYAN CARMODY**

Vice President

D +1 843 577 1162

M +1 843 303 7689

[ryan.carmody@cbre.com](mailto:ryan.carmody@cbre.com)

# SOUTH PARK PLAZA

**CBRE**

© 2025 CBRE, Inc. All rights reserved. This information has been obtained from sources believed reliable, but has not been verified for accuracy or completeness. You should conduct a careful, independent investigation of the property and verify all information. Any reliance on this information is solely at your own risk. CBRE and the CBRE logo are service marks of CBRE, Inc. All other marks displayed on this document are the property of their respective owners, and the use of such logos does not imply any affiliation with or endorsement of CBRE. Photos herein are the property of their respective owners. Use of these images without the express written consent of the owner is prohibited.