

# 3225 NORWICH STREET

BRUNSWICK, GA | 31520



## ±4,500 SF RETAIL/WAREHOUSE SPACE AVAILABLE FOR LEASE



- ±4,900 SF Retail/Warehouse Space Available For Lease
- Unit 1 (On the left) - ±2,400 SF
- Unit 2 (On the right) - ±2,500 SF
- Excellent Visibility and Curb Appeal Fronting Norwich St.
- 14' Ceiling Height
- Garage Door access
- High Traffic Counts
- Prime Commercial Real Estate well suited for a variety of businesses, such as Office or Retail

**Lease Price: Unit 1: \$1,600/Month**

**Lease Price: Unit 2: \$1,200/Month**

For further information, please contact our exclusive agents:

**Luke Jackson** Commercial Real Estate Specialist  
[ljackson@phoenixrealty.net](mailto:ljackson@phoenixrealty.net)

**Kirk Watson** SIOR CCIM Executive VP | South GA Office  
[kwatson@phoenixrealty.net](mailto:kwatson@phoenixrealty.net)

Newmark Phoenix Realty Group, Inc. | South GA Office  
912.268.4069  
561 Ocean Boulevard  
St. Simons Island, GA 31522

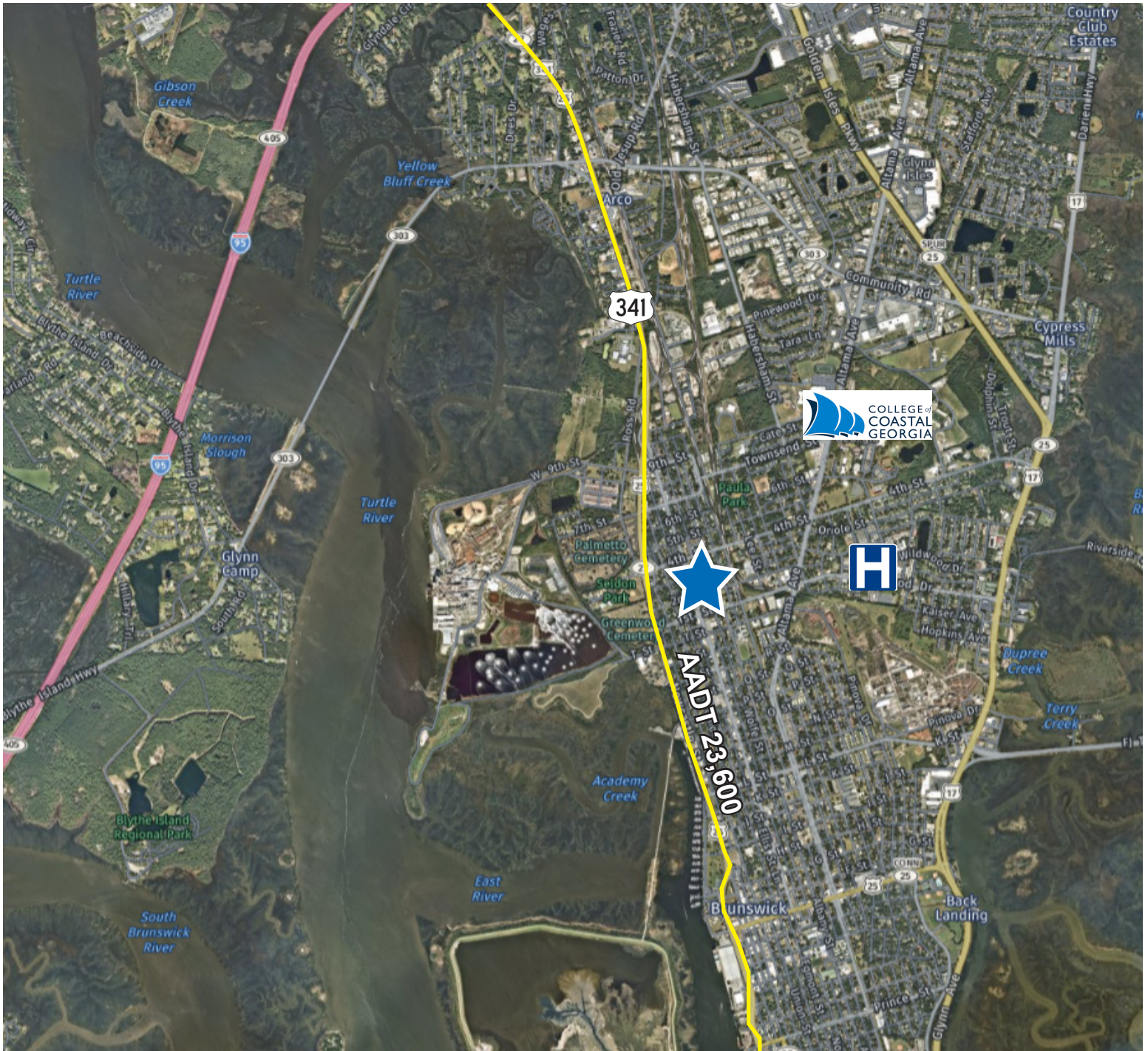
[www.phoenixrealty.net](http://www.phoenixrealty.net)

Procuring broker shall only be entitled to a commission, calculated in accordance with the rates approved by our principal only if such procuring broker executes a brokerage agreement acceptable to us and our principal and the conditions as set forth in the brokerage agreement are fully and unconditionally satisfied. Although all information furnished regarding property for sale, rental, or financing is from sources deemed reliable, such information has not been verified and no express representation is made nor is any to be implied as to the accuracy thereof and it is submitted subject to errors, omissions, change of price, rental or other conditions, prior sale, lease or financing, or withdrawal without notice and to any special conditions imposed by our principal.

**NEWMARK**  
PHOENIX REALTY GROUP

# Property Aerial

3225 Norwich Street | Brunswick, GA | 31520



[www.phoenixrealty.net](http://www.phoenixrealty.net)

Procuring broker shall only be entitled to a commission, calculated in accordance with the rates approved by our principal only if such procuring broker executes a brokerage agreement acceptable to us and our principal and the conditions as set forth in the brokerage agreement are fully and unconditionally satisfied. Although all information furnished regarding property for sale, rental, or financing is from sources deemed reliable, such information has not been verified and no express representation is made nor is any to be implied as to the accuracy thereof and it is submitted subject to errors, omissions, change of price, rental or other conditions, prior sale, lease or financing, or withdrawal without notice and to any special conditions imposed by our principal.

**NEWMARK**  
PHOENIX REALTY GROUP