



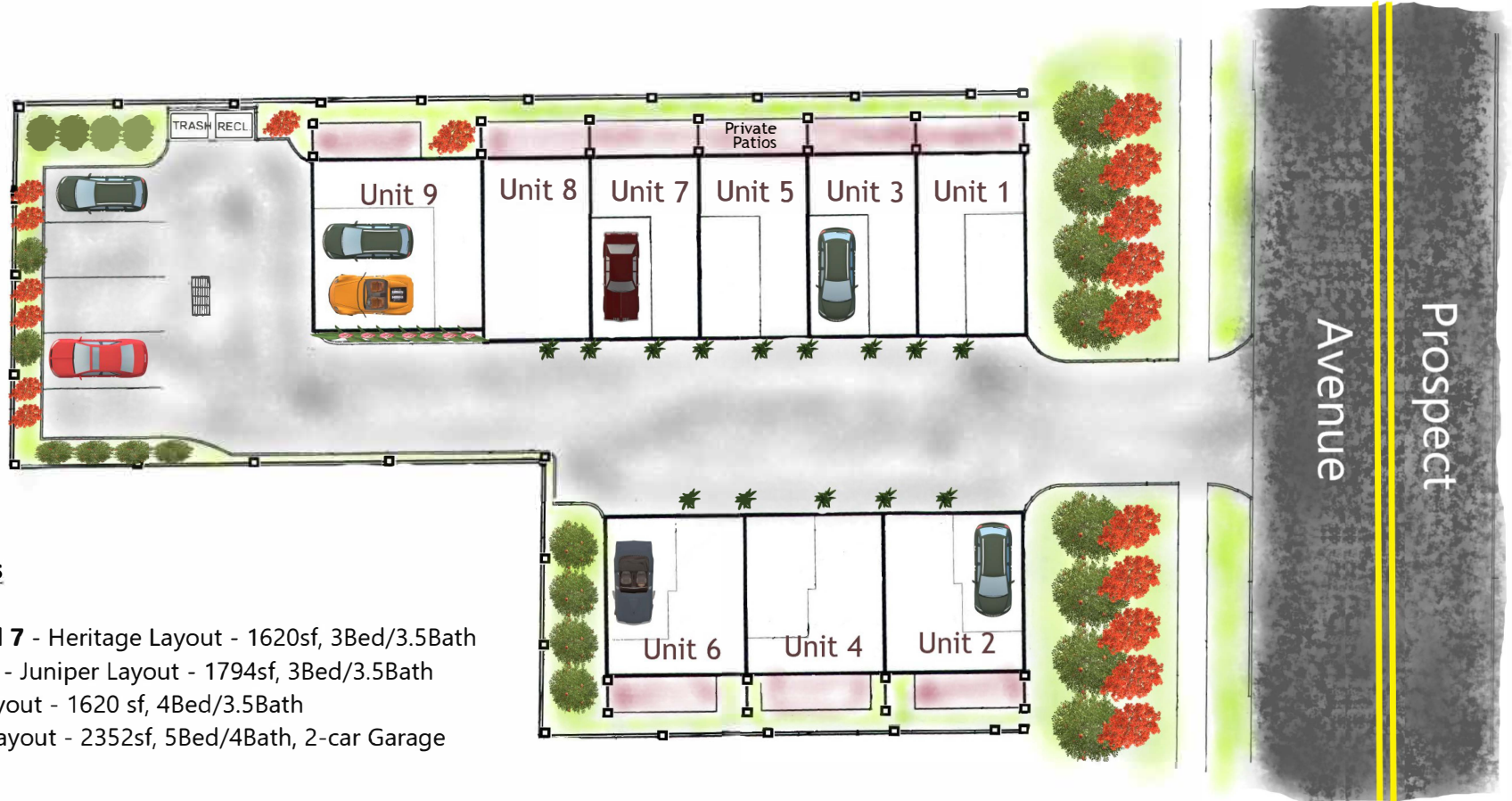
# Rockwell Landing

---

## West Hartford, CT

# Rockwell Landing Townhomes

409 Prospect Avenue • West Hartford, CT



## 9 Townhomes

**Units 1, 3, 5 and 7** - Heritage Layout - 1620sf, 3Bed/3.5Bath

**Units 2, 4 and 6** - Juniper Layout - 1794sf, 3Bed/3.5Bath

**Unit 8** - Echo Layout - 1620 sf, 4Bed/3.5Bath

**Unit 9** - Metro Layout - 2352sf, 5Bed/4Bath, 2-car Garage

## Rockwell Landing

### The Heritage Townhome

Units 1,3 5 and 7

1620 sf - 3 levels

3 Bed/ 3.5 Bath

1 Car Garage



The 3D floorplans depicted on this page are for illustrative purposes only. They include furnishings, decorations, and finishes that are not included in the standard unit. The actual unit may differ in layout, dimensions, and finishes based on the final construction specifications.

# Rockwell Landing

## The Juniper Townhome

### Units 2, 4 and 6

1794 sf - 3 levels  
3 Bed/ 3.5 Bath  
1 Car Garage



The 3D floorplans depicted on this page are for illustrative purposes only. They include furnishings, decorations, and finishes that are not included in the standard unit. The actual unit may differ in layout, dimensions, and finishes based on the final construction specifications.

# Rockwell Landing

## The Echo Townhome

### Unit 8

1620 sf - 3 levels  
4 Bed/ 3.5 Bath



The 3D floorplans depicted on this page are for illustrative purposes only. They include furnishings, decorations, and finishes that are not included in the standard unit. The actual unit may differ in layout, dimensions, and finishes based on the final construction

# Rockwell Landing

## The Metro Townhome

### Unit 9

2352 sf - 3 levels

5 Bed/ 4 Full Bath

2 Car Garage



The 3D floorplans depicted on this page are for illustrative purposes only. They include furnishings, decorations, and finishes that are not included in the standard unit. The actual unit may differ in layout, dimensions, and finishes based on the final construction specifications.