

# FOR LEASE - ALBANY PINE BUSH OFFICE SPACE

28 Madison Avenue Ext., Albany, New York 12203



## OFFERING SUMMARY

Lease Price:	\$14.50/SF +UTILITIES
Office Space 3:	±4,371
Office Space 4:	±1,245
Zoning:	Commercial
Parcel:	2.46
Stories:	1
Parking:	85
Ceiling Height:	9'
Water:	Municipal
Heat:	GFHA
A/C:	Central
Electric:	600 Amp
Construction:	Brick
Roof:	Rubber
Year Built:	1986

## Property Overview

Space 3 consists of three offices, kitchenette, conference room and lots of open area.

Space 4 consists of two offices, reception/bullpen area, large conference room storage and plenty of wide open space. Right off lobby.

Building is in a park-like setting next to the Pine Bush Trail System which is a great added benefit for your staff.

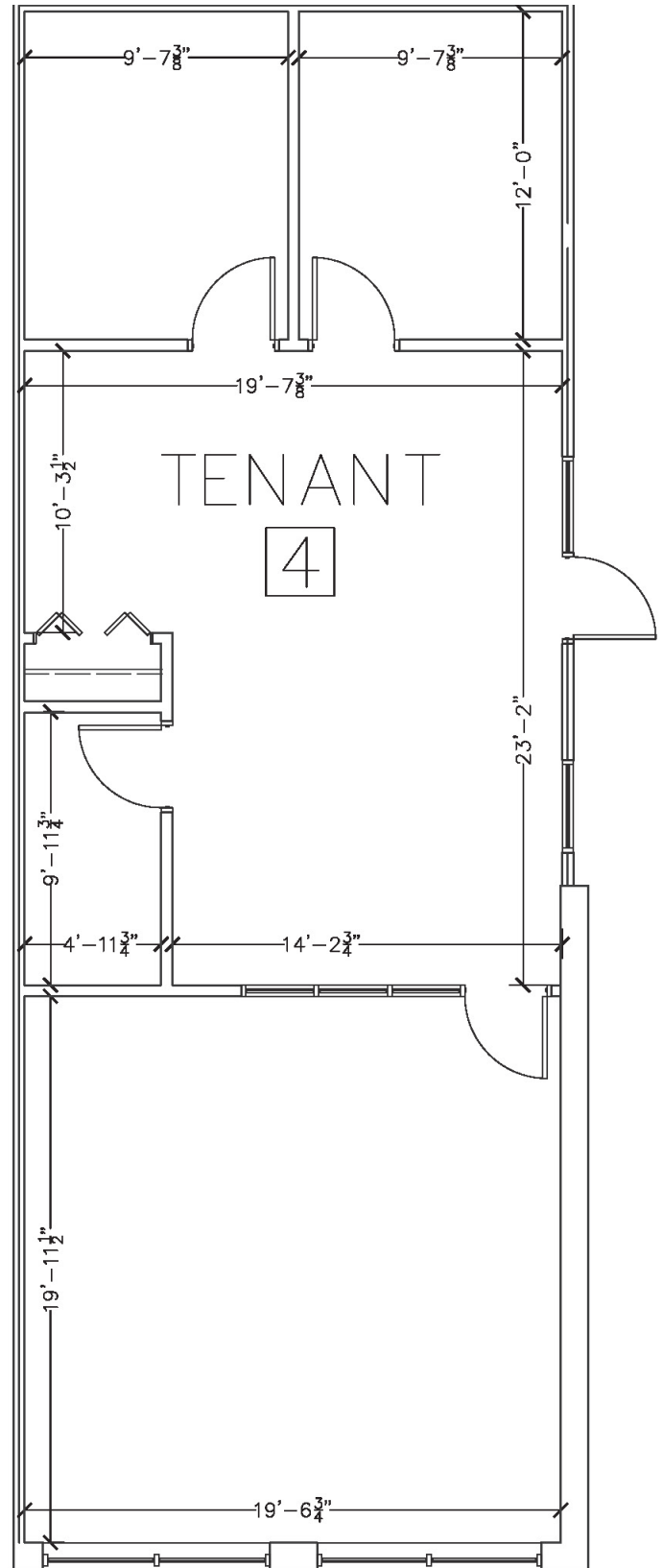
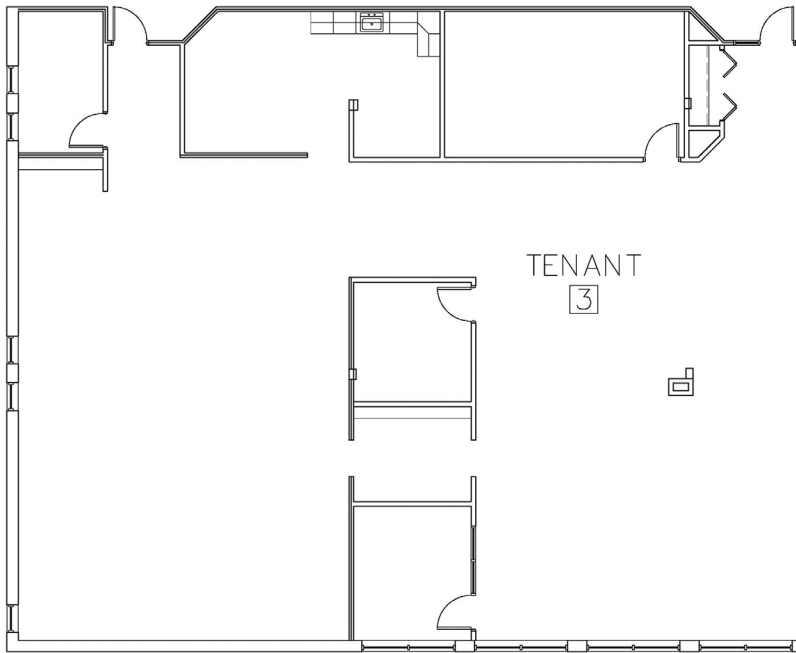
**James "Jay" Verro, CCIM** | Associate Broker  
+1 518 369 5048 | +1 518 465 1400 ext. 214 | [jverro@ccim.net](mailto:jverro@ccim.net)



**Robert Murphy** | Real Estate Salesperson  
+1 518 588 2665 | +1 518 465 1400 ext. 209 | [rmurphy@naiplatform.com](mailto:rmurphy@naiplatform.com)

# FOR LEASE - ALBANY PINE BUSH OFFICE SPACE

28 Madison Avenue Ext., Albany, New York 12203



James "Jay" Verro, CCIM | Associate Broker

+1 518 369 5048 | +1 518 465 1400 ext. 214 | jverro@ccim.net

Robert Murphy | Real Estate Salesperson

+1 518 588 2665 | +1 518 465 1400 ext. 209 | rmurphy@naiplatform.com

