



Location Finders Brokerage, LLC
9440 Enterprise Dr, Mokena, IL 60448
(708) 390-1629

5630 W. 111th St
Chicago Ridge, IL

Space Available

4,000 SF

MARKET SUMMARY

- Available medical office space located in Chicago Ridge, IL
- Off-corner to signalized intersection seeing over 30,000 VPD
- Approximately 14.6 miles from downtown Chicago, IL
- Great demographics with 138,000 people with incomes of \$91,000 within 3-miles

DEMOGRAPHICS

POPULATION	1 Mile	14,083
	3 Mile	138,758
	5 Mile	352,813
# HOUSEHOLDS	1 Mile	5,555
	3 Mile	53,667
	5 Mile	130,425
AVG HH INCOME	1 Mile	\$83,779
	3 Mile	\$91,955
	5 Mile	\$91,562

CONTACT

ALAN ERICKSON
aerickson@lfirealestate.com
(708) 390-1629





Location Finders Brokerage, LLC
9440 Enterprise Dr, Mokena, IL 60448
(708) 390-1629

5630 W. 111th St
Chicago Ridge, IL

Space Available

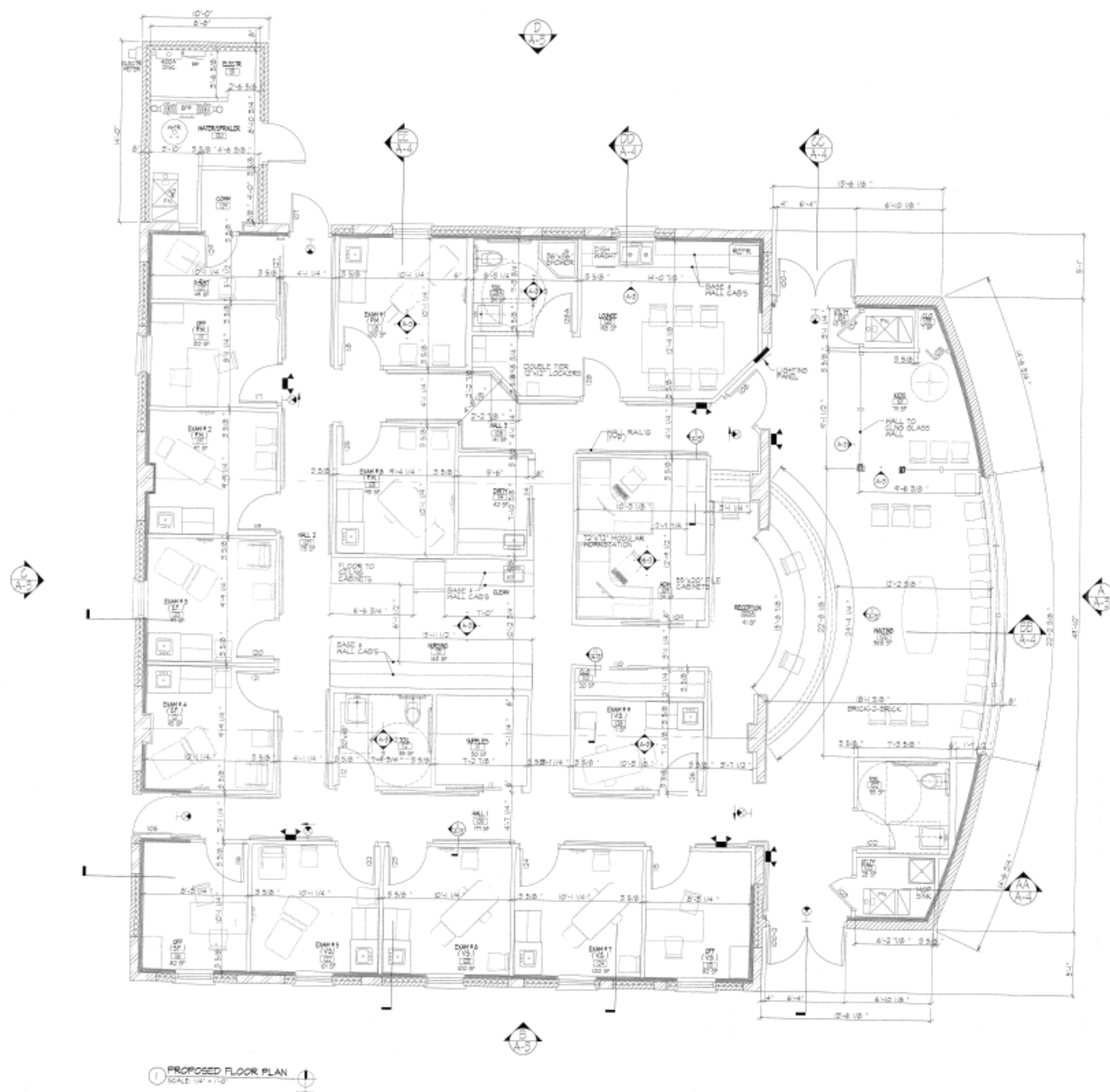
4,000 SF

SITE SUMMARY

- **Available:** 4,000 SF Fully Built-Out Medical Office
- **Access:** Full access from 111th St and Parkside Avenue
- **Parking:** 21 Spaces
- **Signage:** Prominent Building Signage on 111th St

CONTACT

ALAN ERICKSON
aerickson@lfirealestate.com
(708) 390-1629



This information contained is obtained from sources we deem reliable. We have no reason to doubt its accuracy but do not guarantee it.