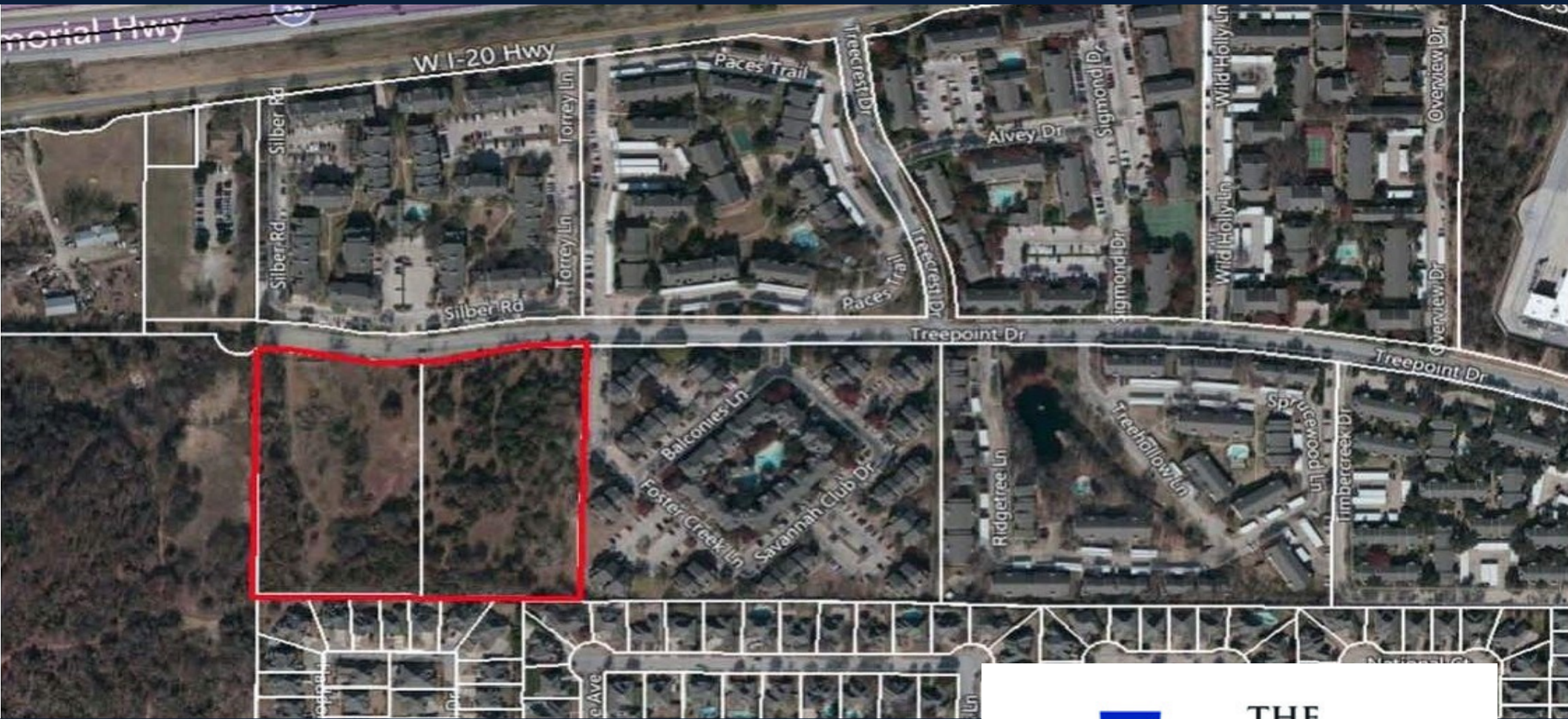


6900-7000 Treepoint Dr | Arlington, TX 76017



9.37 ACRES

Arlington, TEXAS

Prime multifamily development opportunity in
Central DFW location



Contact:

John Parducci | jparducci@valcapgroup.com
| 972.750.6850

PROPERTY OVERVIEW

Arlington, Texas

HIGHLIGHTS

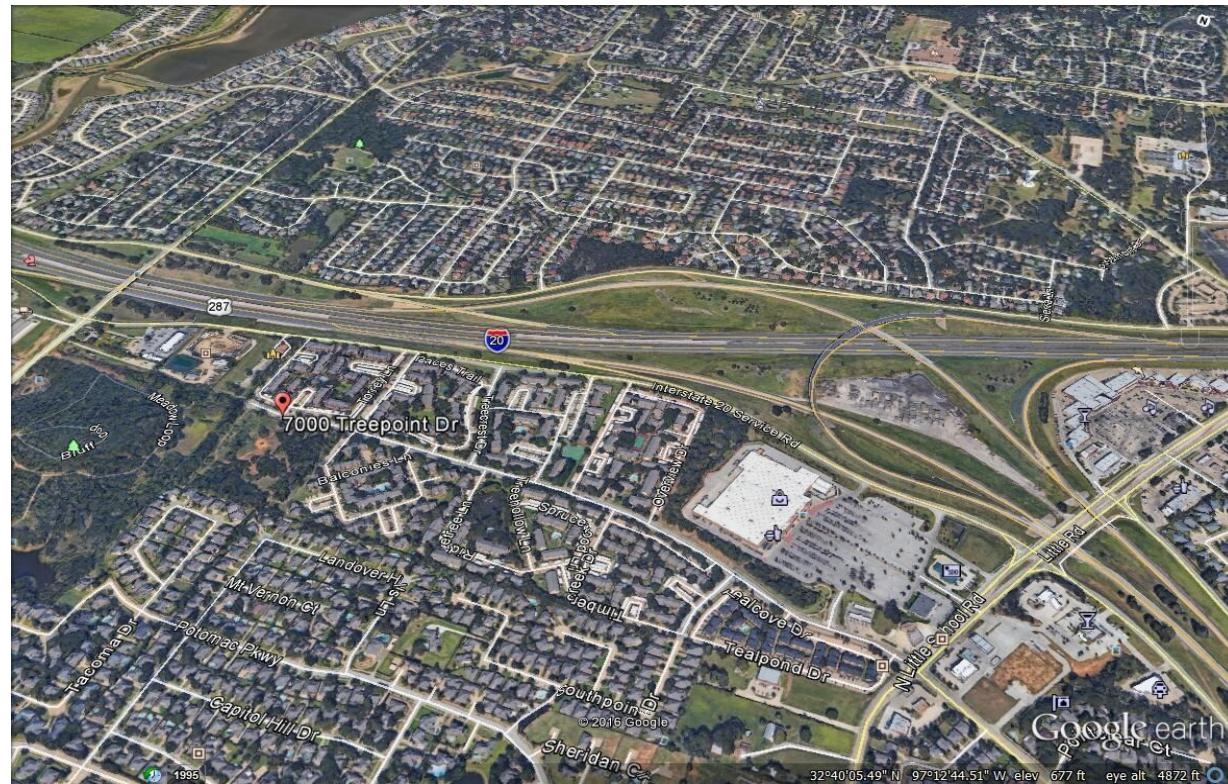
- Location: Arlington, TX
- Lot Size: 9.37 contiguous acres
- Zoning: RMF-22
- Utilities: All utilities accessible at site
- Road Access: Directly off Treepoint Drive in residential neighborhood
- Nearby: Walmart Super Center, I-20 Hwy, Kennedale High school, and additional retail and employers

OVERVIEW

Presenting a prime opportunity for developers: 9.37 Acres in an excellent neighborhood in south west Arlington. The property is zoned for RMF-22 providing great options for developing new multifamily in an established pocket of Arlington TX.

WHY Arlington

Area median income of \$67,000 within 1 mile and \$71,000 withink 3 mile radius. Population growth projected 5% over next 5 years. Nearby apartments average 93% occupancy or higher.



ValCap Group LLC

John Parducci | jparducci@valcapgroup.com | 972.750.6850

omissions, change of price, prior sale, or withdrawal without notice. or representations are made as to the completeness or accuracy thereof. This offering is subject to errors, The information contained herein was obtained from sources deemed reliable; however, no guarantees, warranties

