

# BOUNDARY SUR

235 LINCOLN ROAD, MIAMI BEACH, FL  
SECTION 34-TWP 53S-RGE 42E

~~COLLINS AVENUE~~

GRAPHIC SCALE



SCALE : 1" = 20'

FISHER'S FIRST SUBDIVISION OF ALTON BEACH

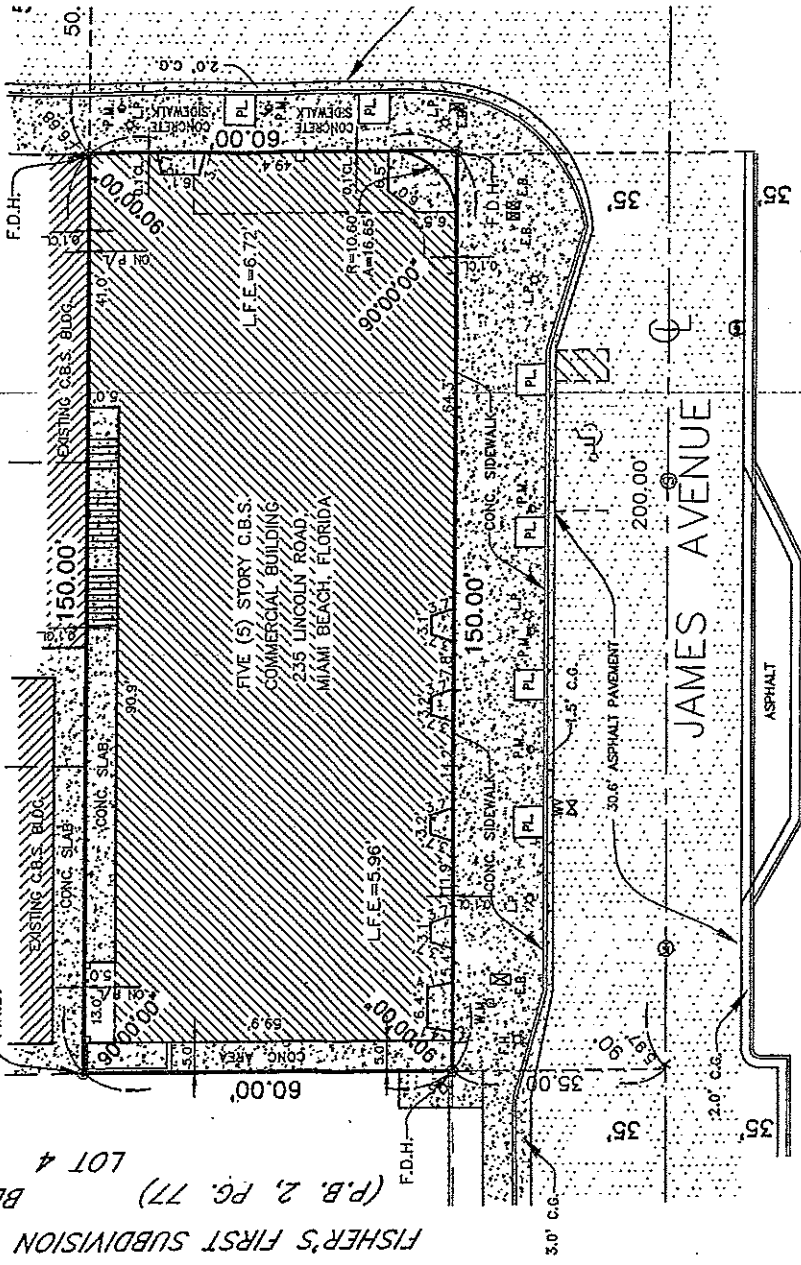
FISHER'S FIRST SUBDIVISION OF ALTON BEACH  
(P.B. 2, PG. 77)  
BLOCK 30

LOT 4  
BLOCK 30  
(P.B. 2, PG. 77)

PORTION OF  
LOT 3

PORTION OF  
LOT 2

PORTION OF  
LOT 1



BLOCK 31  
FISHER'S FIRST SUBDIVISION OF ALTON BEACH  
(P.B. 2, PG. 77)

50

## ABBREVIATIONS

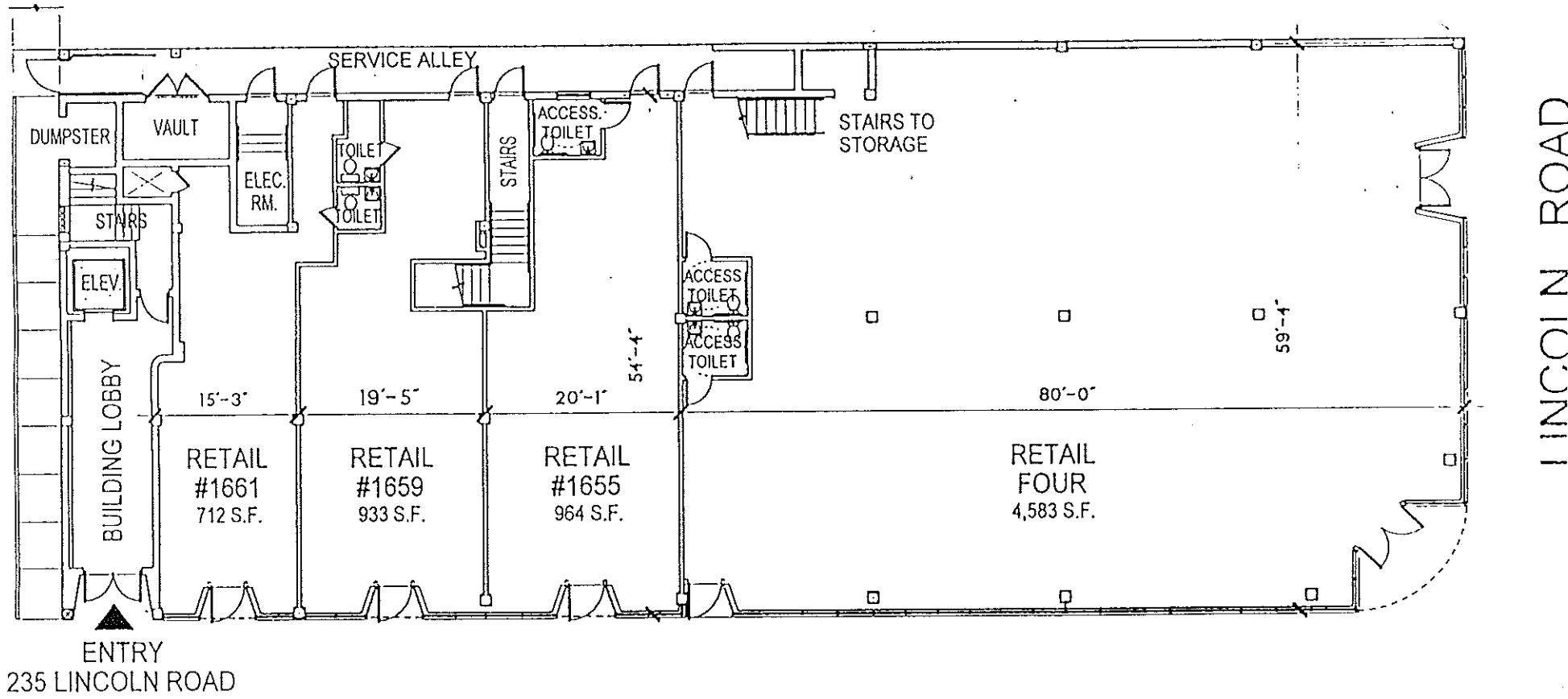
F.I.P.	Found Iron Pipe
R/W	Right-of-Way Line
P/L	Property Line
I.D.	Identification
C.S.	Concrete Slab
C.B.S.	Concrete Block Structure
±	Center Line
P.B.	Plat Book
PG.	Page
ASPH.	Asphalt
CONC.	Concrete
D.W.Y.	Driveway
C.B.S.	Concrete Block Structure

## LEGEND

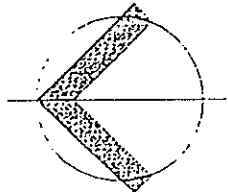
MLP	Metal Light Pole	CLP	Property Corner
GW	Guy Wire	CV	Concrete Light Pole
UP	Utility Power Pole	D4	Gas Valve
HY	Fire Hydrant	WV	Water Valve
WM	Water Meter	WM	Water Manhole
EB	Electric Box	TM	Telephone Manhole
TB	Telephone Box	UM	Unknown Manhole
SM	Sewer Manhole	NS	Number of parking spaces
TS	Traffic Sign	SE	Spot Elevation
CB	Catch Basin		

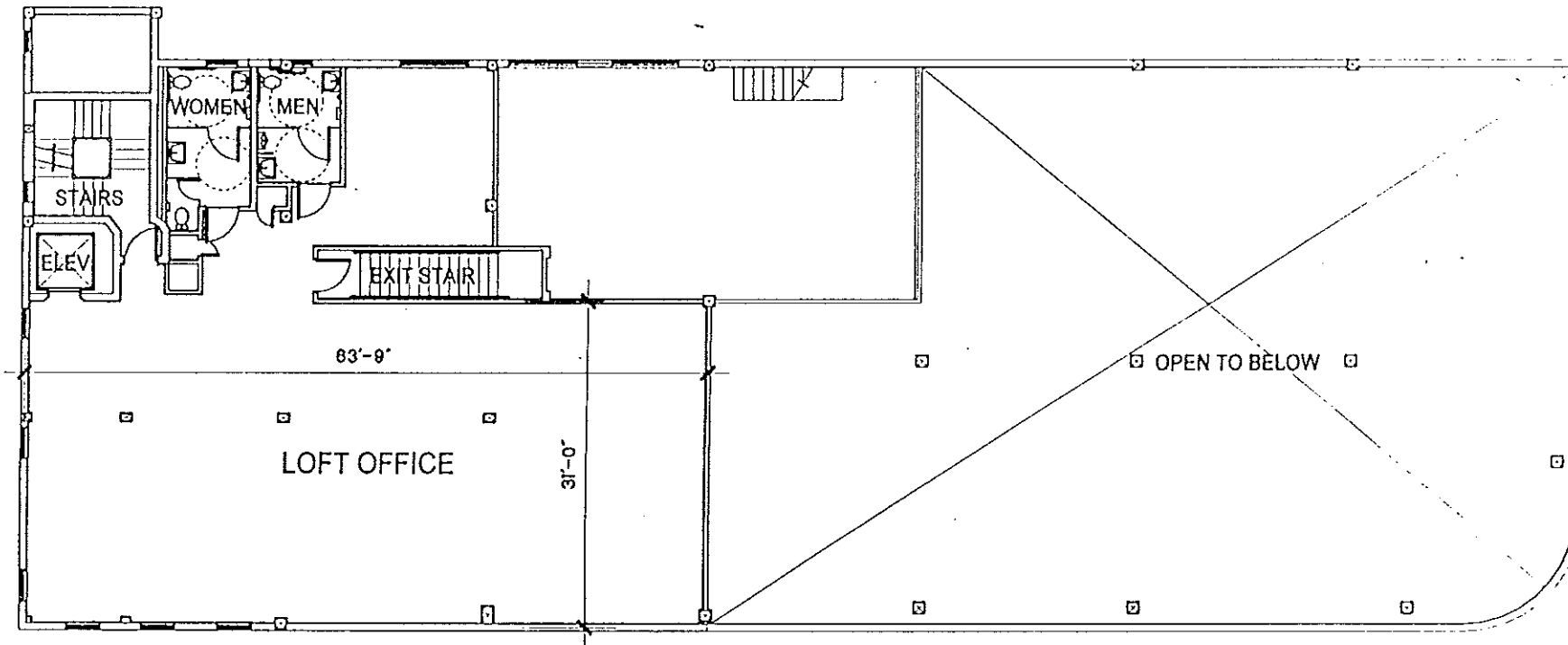
x 10.00'





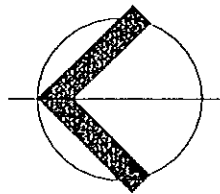
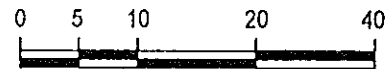
**GROUND FLOOR**



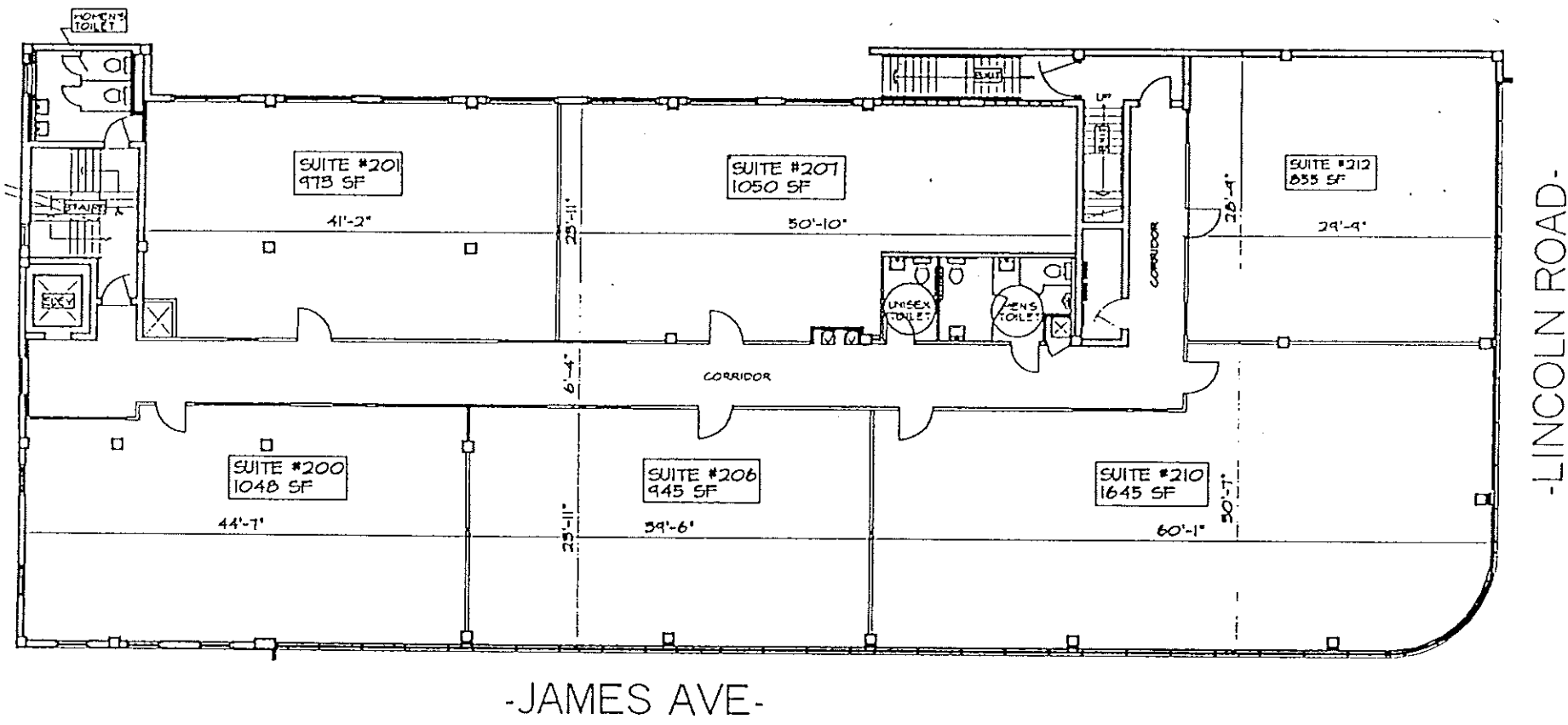


JAMES AVENUE

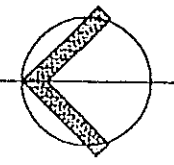
**LOFT LEVEL**

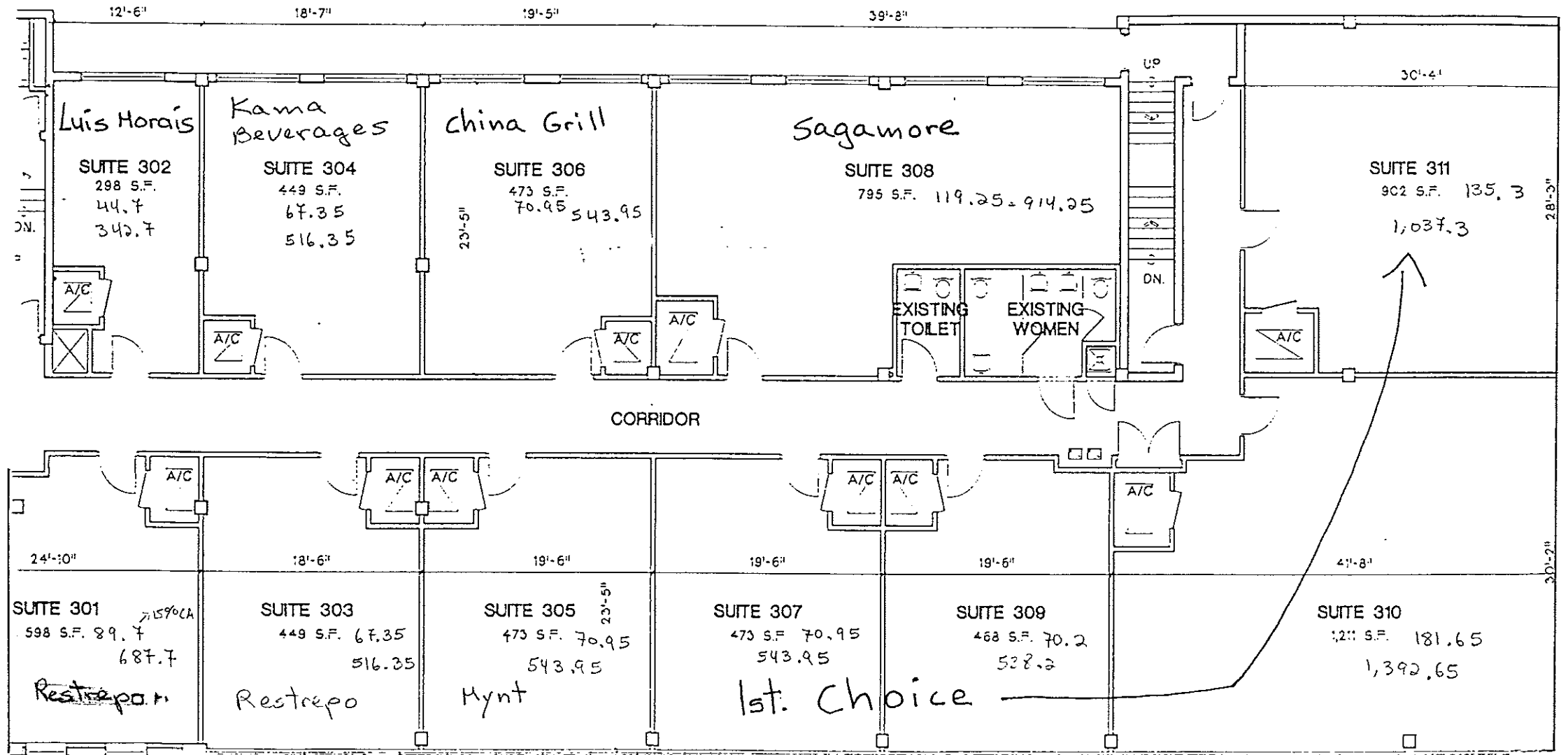


**PAUL & BOZ**  
 ARCHITECT P  
 150 ALHAMBRA CIRCLE, SUITE 1,  
 305.444.7411 fax: 305.444.7538

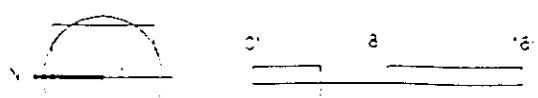


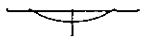
**SECOND FLOOR**



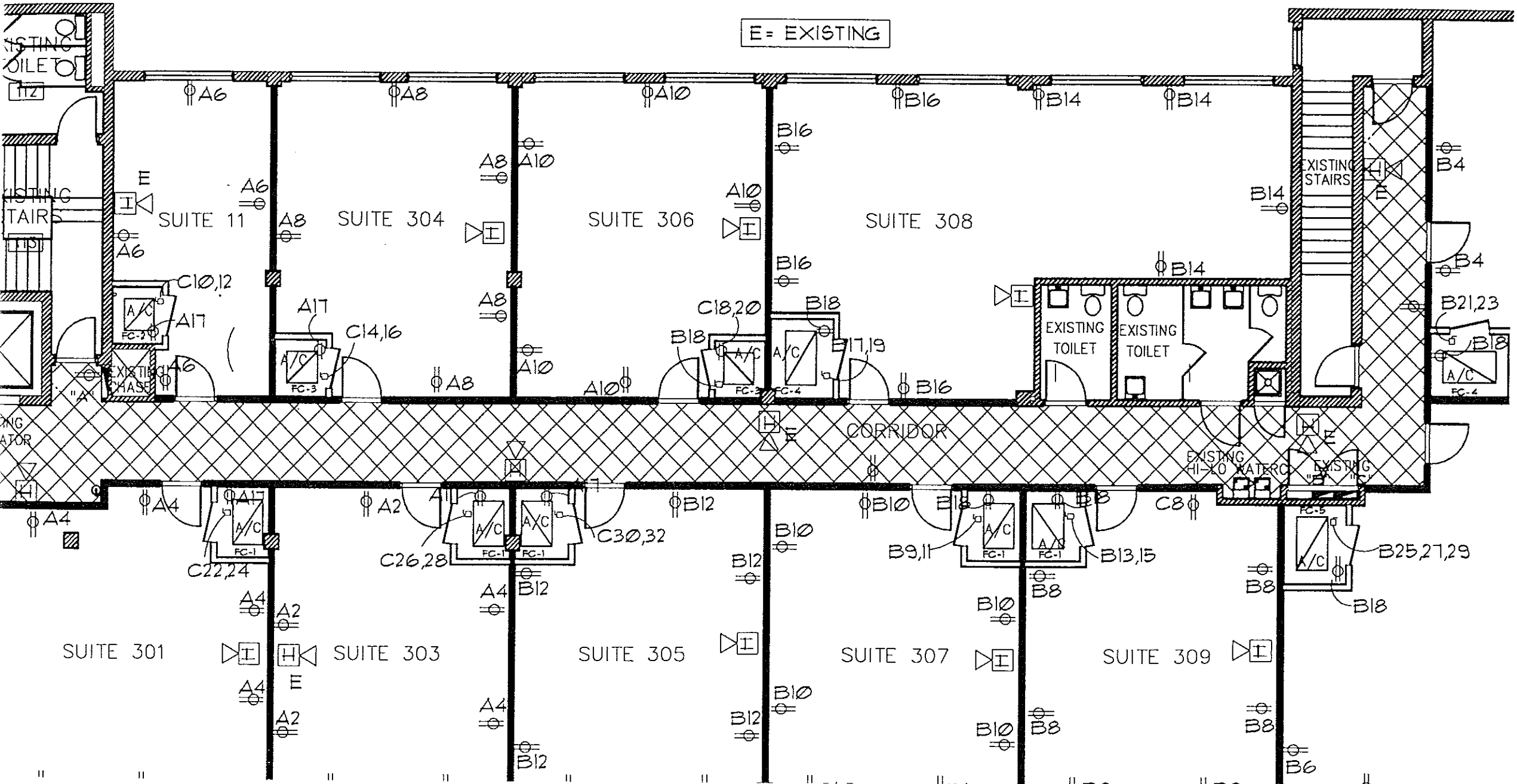


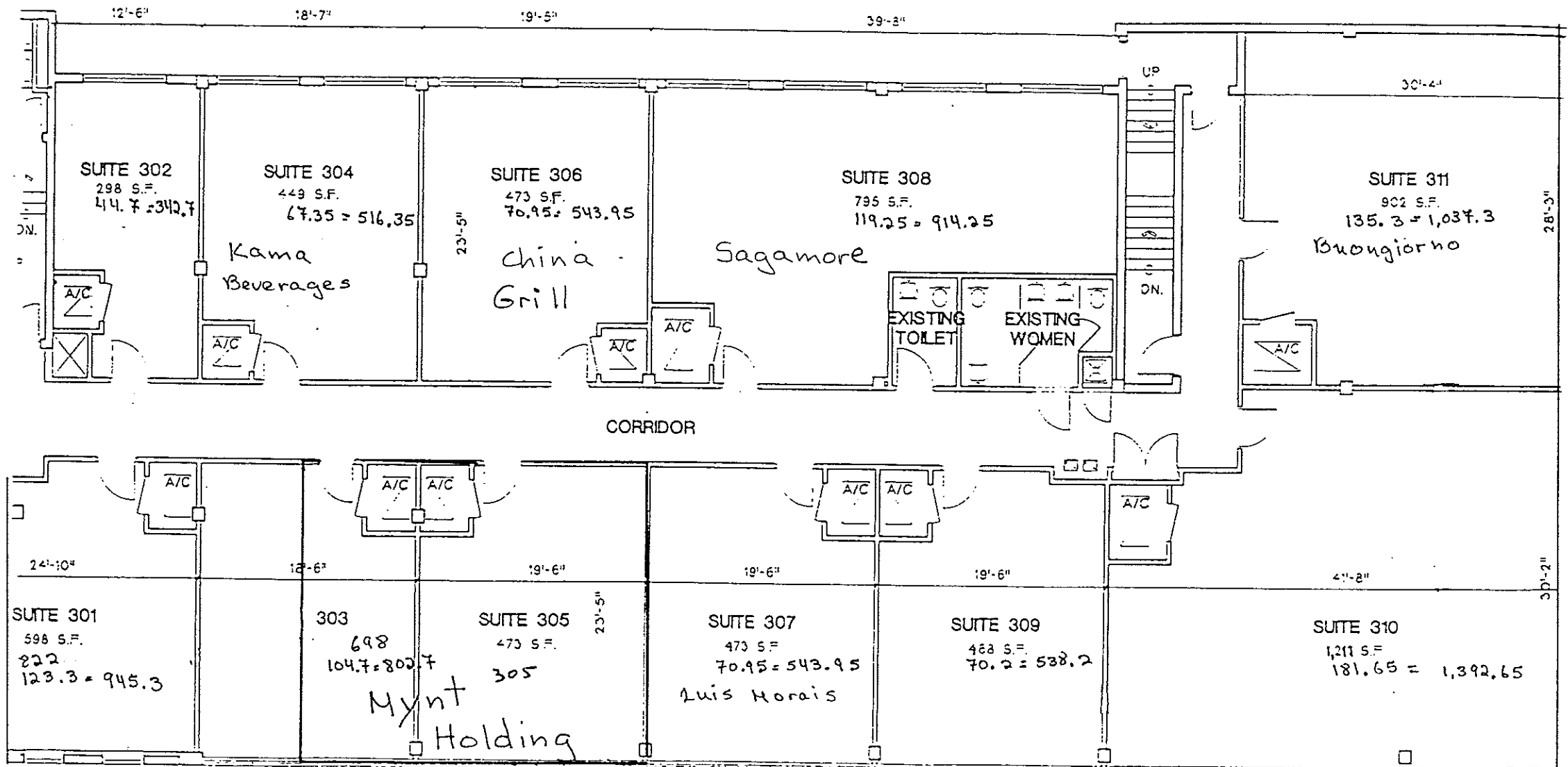
3rd. FLOOR PLAN



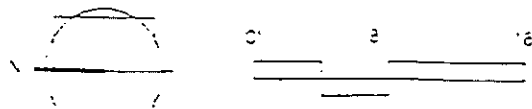


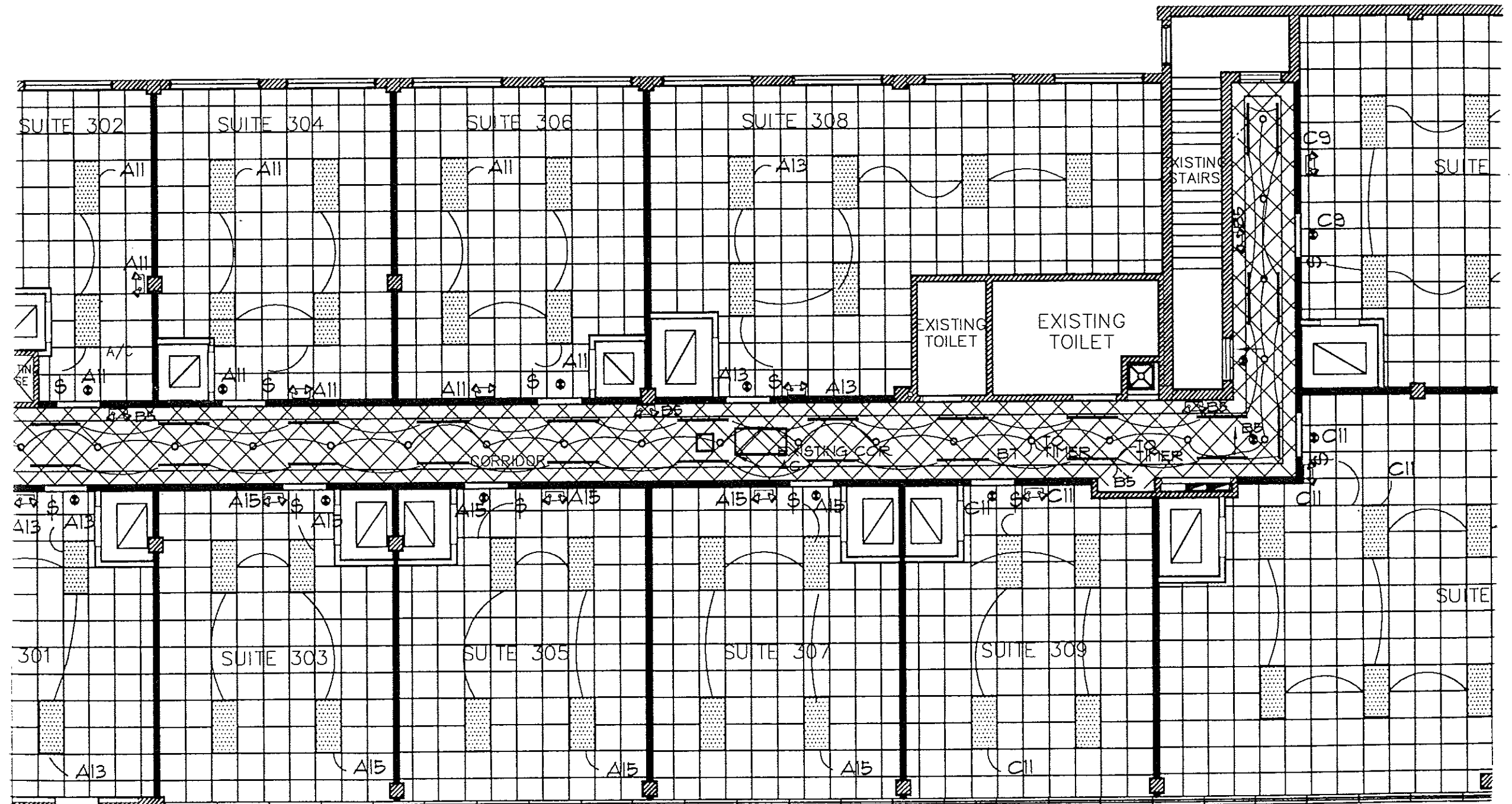
E = EXISTING

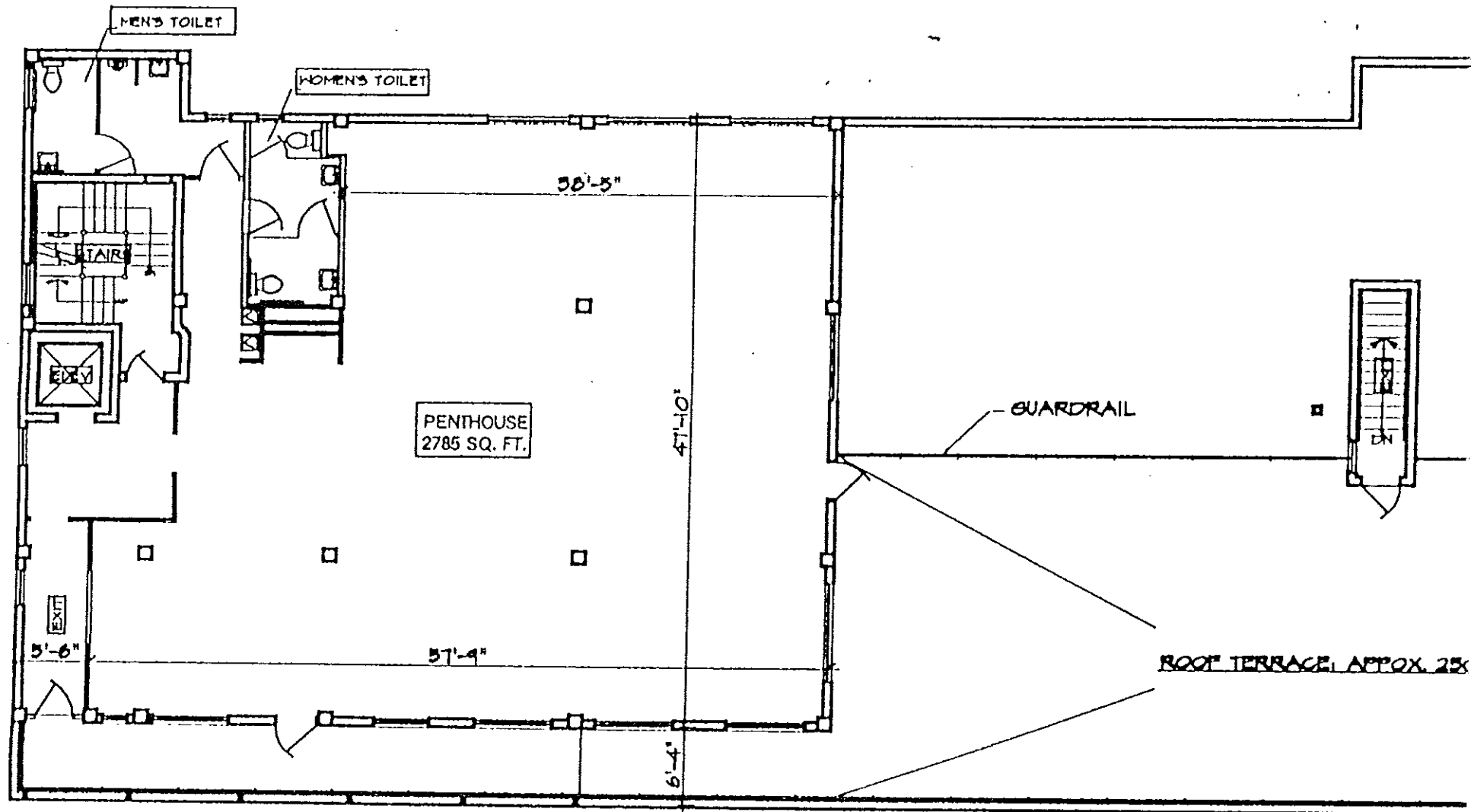




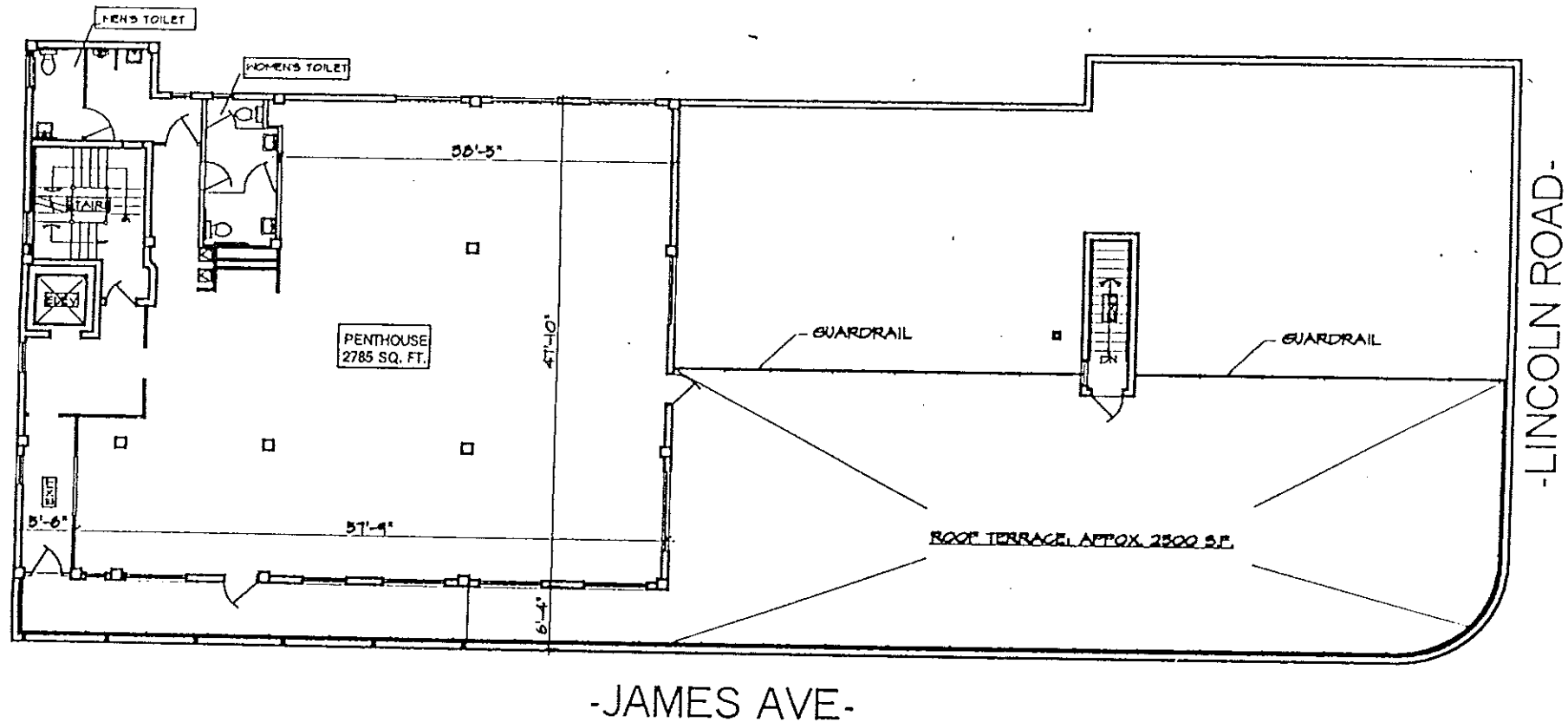
3d. FLOOR PLAN



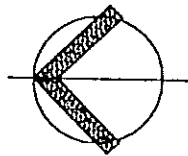




-JAMES AVE-



# PENTHOUSE



Area 2785 15% C.Area 278.50 Adj.Sq.Ft. 3063.50  
 Rate/Sq.Ft. \$30.00 Monthly \$7,658.75 Tax \$536.11  
 Total \$8,194.86 %R.P.Tax 14.0%  
 Roof Terr. Area 2500

**PAUL A. BUZ**  
 ARCHITECT A1  
 150 ALHAMBRA CIRCLE SUITE 125  
 508.444.7411 Fax: 508.444.7538 e-