

OFFICE FOR LEASE
665 Lifecore Drive
Fishersville, VA 22939



JENNY STONER
Senior Vice President
434 234 8417
jenny.stoner@thalhimer.com

MATT GREENE
Vice President
434 333 0089
matt.greene@thalhimer.com

JOSI WILLIAMS
Associate
434 333 6991
josi.williams@thalhimer.com

**1,373 – 5,290 SF
AVAILABLE**



PROPERTY HIGHLIGHTS



1,373 - 5,290 SF MEDICAL/ OFFICE SPACE FOR LEASE



BRAND NEW CONSTRUCTION



PROXIMITY TO GROWING AUGUSTA HEALTH SYSTEM



LARGE WINDOWS ALLOW LOTS OF NATURAL LIGHT



ACCESS TO BEAUTIFUL COURTYARD



AMPLE PARKING AVAILABLE ONSITE



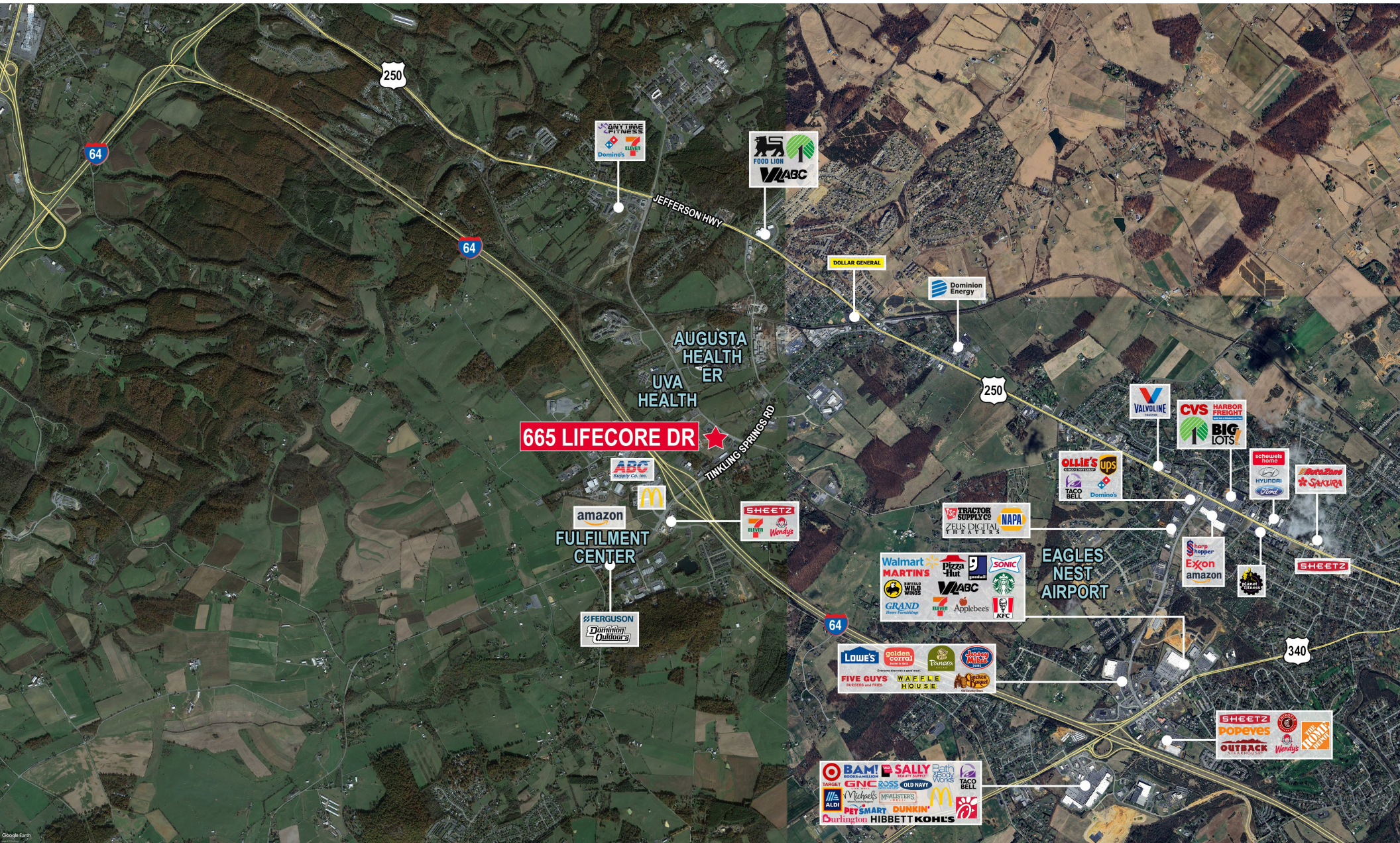
JOIN NEIGHBORING TENANT, VIRGINIA RETINA CONSULTANTS



PROPERTY PHOTOS



PROPERTY LOCATION



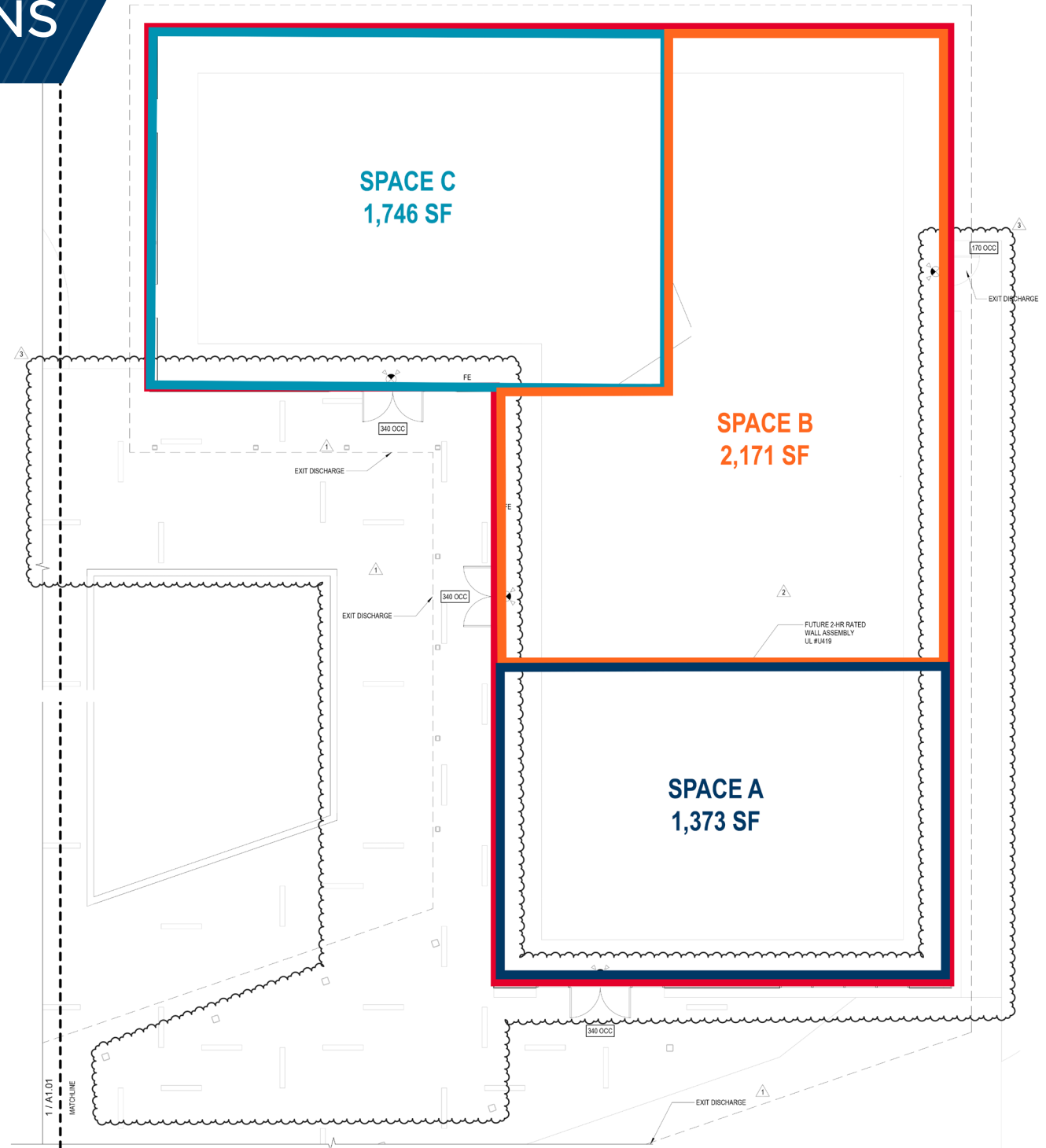
POTENTIAL DEMISING OPTIONS

WHOLE SPACE:
5,290 SF

SPACE A:
1,373 SF

SPACE B:
2,171 SF

SPACE C:
1,746 SF



600 E Water Street
Suite C
Charlottesville, VA 22902
www.thalhimer.com



JENNY STONER

Senior Vice President

434 234 8417

jenny.stoner@thalhimer.com

MATT GREENE

Vice President

434 333 0089

matt.greene@thalhimer.com

JOSI WILLIAMS

Associate

434 333 6991

josi.williams@thalhimer.com

Independently Owned and Operated / A Member of the Cushman & Wakefield Alliance

Cushman Wakefield | Thalhimer ©2024. No warranty or representation, express or implied, is made to the accuracy or completeness of the information contained herein, and same is submitted subject to errors, omissions, change of price, rental or other conditions, withdrawal without notice, and to any special listing conditions, imposed by the property owner(s). As applicable, we make no representation as to the condition of the property (or properties) in question.