

# 46 HOOLAI STREET

Honolulu, HI 96734

# FOR LEASE

Retail Space in Kailua



## PROPERTY DESCRIPTION

Space available in the heart of popular Kailua Town. Ample parking located in front and side of the building which allows easy access.

Turnkey Cafe and commercial kitchen space with great visibility and natural light. A roll up service door on the back of the building facilitates easy catering.

A private bathroom in the unit and the tenant will have two reserved parking stalls.

## PROPERTY SNAPSHOT

Location:	Kailua	
Property Type:	Retail (Restaurant/cafe)	
TMK:	(1) 4-3-57-19	
<u>Available Spaces:</u>	<u>Size:</u>	<u>Rent:</u>
Unit A Restaurant/Cafe	2,835 SF	\$3.00 / SF / MO
CAM:	\$1.11 / SF / MO	
Zoning:	B-2	

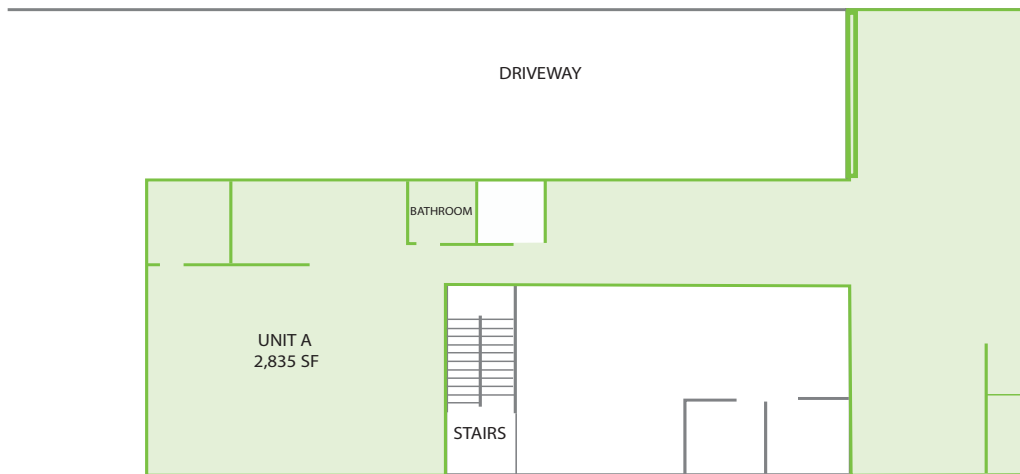
©2025 Sofos Realty Corporation. All information contained herein is obtained from sources deemed reliable. However, no representations or guarantees are made as to the accuracy thereof, and it is provided herein subject to errors, omissions, changes and withdrawals without notice. Offeror and/or his agent should confirm this information prior to making any offer. Buyer agrees that all negotiation shall be conducted through Sofos Realty Corporation only. No subagency is offered or intended.

 **SOFOS REALTY**  
CORPORATION  
Commercial Brokerage • Property Management

## PHOTOS



## FLOOR PLAN



## GROUND FLOOR

*Site and floor plans are for marketing purposes only and may not accurately reflect the property.*