



FOR LEASE Civic Center Square

2405 CAPITOL STREET FRESNO, CA 93721

Galleria Building

1,370 Square Feet (Restaurant)
700 Square Feet

Crescent Building

1,370 Square Feet (Restaurant)
700 Square Feet
1,000 Square Feet
1,400 Square Feet (Convenience Store)

CONTACT US

Patrick Monreal
C 559 284 9028
patrick@saitocompany.com

Mark Saito
C 559 284 0123
mark@saitocompany.com

View more listings at saitocompany.com

Location, demographics and plan information is supplied by sources believed to be reliable. However, the Mark Saito Company cannot guarantee its accuracy and makes no warranty or representations as to its veracity. It is presented here with the possibility of errors, omissions, change of price, rental or other conditions, prior sale, lease or financing, or withdrawal without notice. We include projections, opinions, assumptions or estimates for example only and these may not represent current or future performance of the property. All inquiries about content should be directed to the broker (BRE LIC# 00701227) Mark Saito and the Mark Saito Company. All rights reserved.

THE
MARK
SAITO
COMPANY

MULTI SHOP POSSIBILITIES

Multiple restaurant/retail locations for lease. Located in beautiful Downtown Fresno at 2450 Capitol Street in Fresno, CA. This location would be perfect for your restaurant/retail business.



CONTACT US

Patrick Monreal
C 559 284 9028
patrick@saitocompany.com

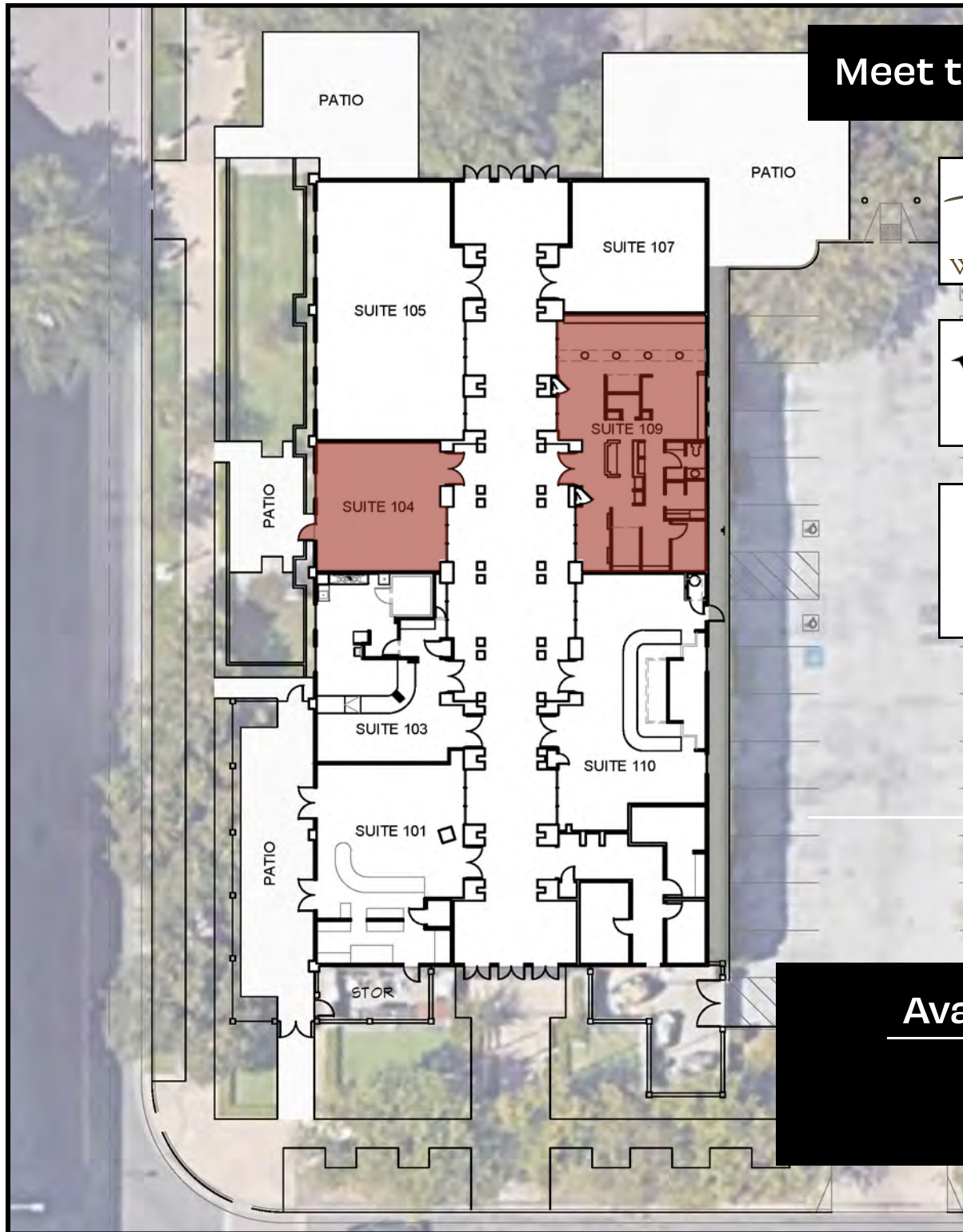
Mark Saito
C 559 284 0123
mark@saitocompany.com

View more listings at saitocompany.com

Location, demographics and plan information is supplied by sources believed to be reliable. However, the Mark Saito Company cannot guarantee its accuracy and make no warranty or representations as to its veracity. It is presented here with the possibility of errors, omissions, change of price, rental or other conditions, prior sale, lease or financing, or withdrawal without notice. We include projections, opinions, assumptions or estimates for example only and these may not represent current or future performance of the property. All inquiries about content should be directed to the broker (BRE LIC# 00701227) Mark Saito and the Mark Saito Company. All rights reserved.

THE
MARK
SAITO
COMPANY

Galleria Property Layout



Meet the Neighbors



Available Suites

Suite 104

Suite 108 / 109

CONTACT US

Patrick Monreal
C 559 284 9028
patrick@saitocompany.com

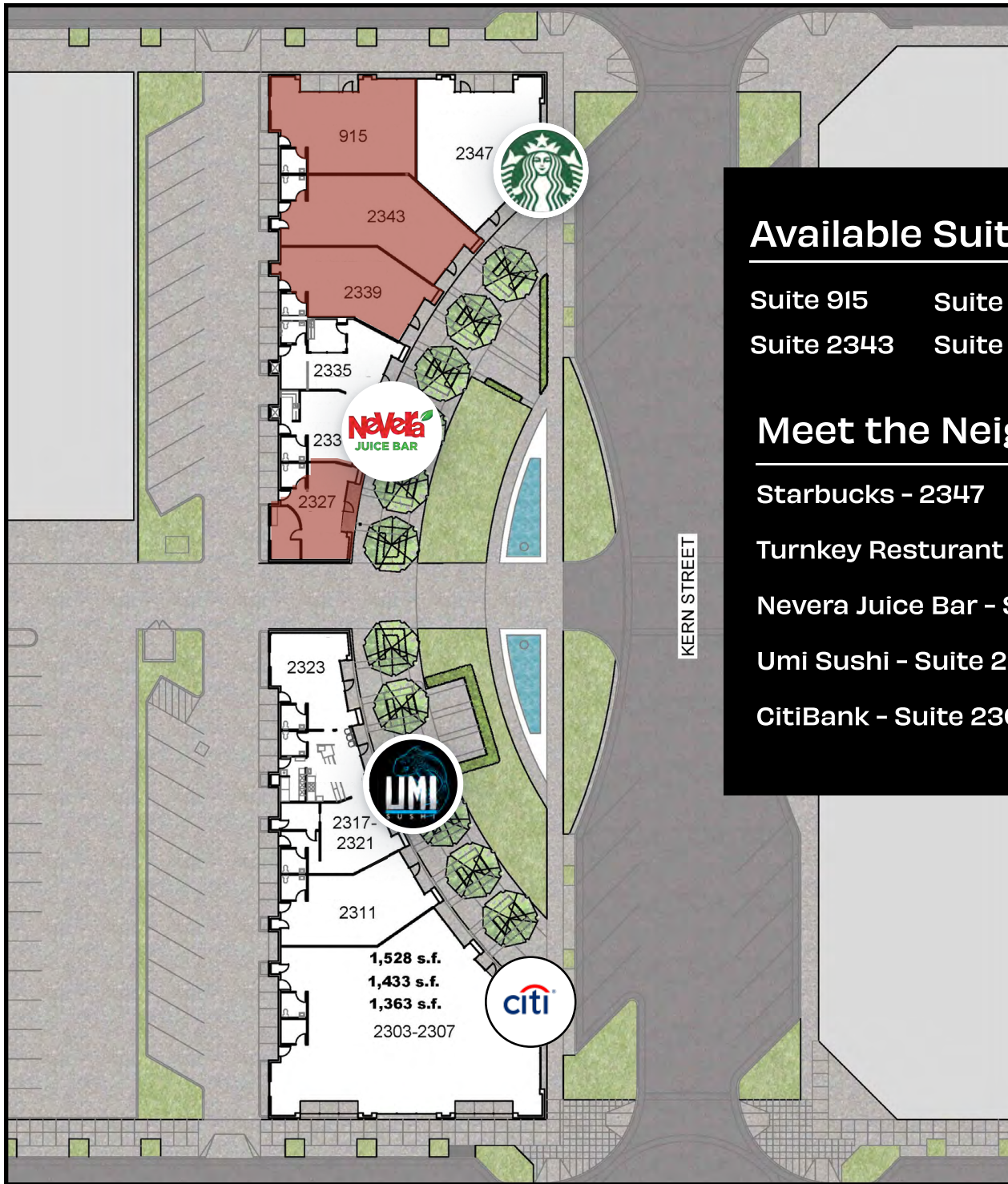
Mark Saito
C 559 284 0123
mark@saitocompany.com

View more listings at saitocompany.com

Location, demographics and plan information is supplied by sources believed to be reliable. However, the Mark Saito Company cannot guarantee its accuracy and make no warranty or representations as to its veracity. It is presented here with the possibility of errors, omissions, change of price, rental or other conditions, prior sale, lease or financing, or withdrawal without notice. We include projections, opinions, assumptions or estimates for example only and these may not represent current or future performance of the property. All inquiries about content should be directed to the broker (BRE LIC# 00701227) Mark Saito and the Mark Saito Company. All rights reserved.



Crescent Property Layout



Available Suites

Suite 915 Suite 2339
Suite 2343 Suite 2327

Meet the Neighbors

Starbucks - 2347

Turnkey Restaurant - 2343

Nevera Juice Bar - Suite 2311

Umi Sushi - Suite 2321

CitiBank - Suite 2303

CONTACT US

Patrick Monreal
C 559 284 9028
patrick@saitocompany.com

Mark Saito
C 559 284 0123
mark@saitocompany.com

View more listings at saitocompany.com

Location, demographics and plan information is supplied by sources believed to be reliable. However, the Mark Saito Company cannot guarantee its accuracy and make no warranty or representations as to its veracity. It is presented here with the possibility of errors, omissions, change of price, rental or other conditions, prior sale, lease or financing, or withdrawal without notice. We include projections, opinions, assumptions or estimates for example only and these may not represent current or future performance of the property. All inquiries about content should be directed to the broker (BRE LIC# 00701227) Mark Saito and the Mark Saito Company. All rights reserved.

THE
MARK
SAITO
COMPANY

MEET THE NEIGHBORS

Starbucks

Fresno Convention & Entertainment Center

California 41 Highway



2405 CAPITOL STREET
FRESNO, CA 93721

CONTACT US

Patrick Monreal
C 559 284 9028
patrick@saitocompany.com

Mark Saito
C 559 284 0123
mark@saitocompany.com

View more listings at saitocompany.com

Location, demographics and plan information is supplied by sources believed to be reliable. However, the Mark Saito Company cannot guarantee its accuracy and make no warranty or representations as to its veracity. It is presented here with the possibility of errors, omissions, change of price, rental or other conditions, prior sale, lease or financing, or withdrawal without notice. We include projections, opinions, assumptions or estimates for example only and these may not represent current or future performance of the property. All inquiries about content should be directed to the broker (BRE LIC# 00701227) Mark Saito and the Mark Saito Company. All rights reserved.

THE
MARK
SAITO
COMPANY