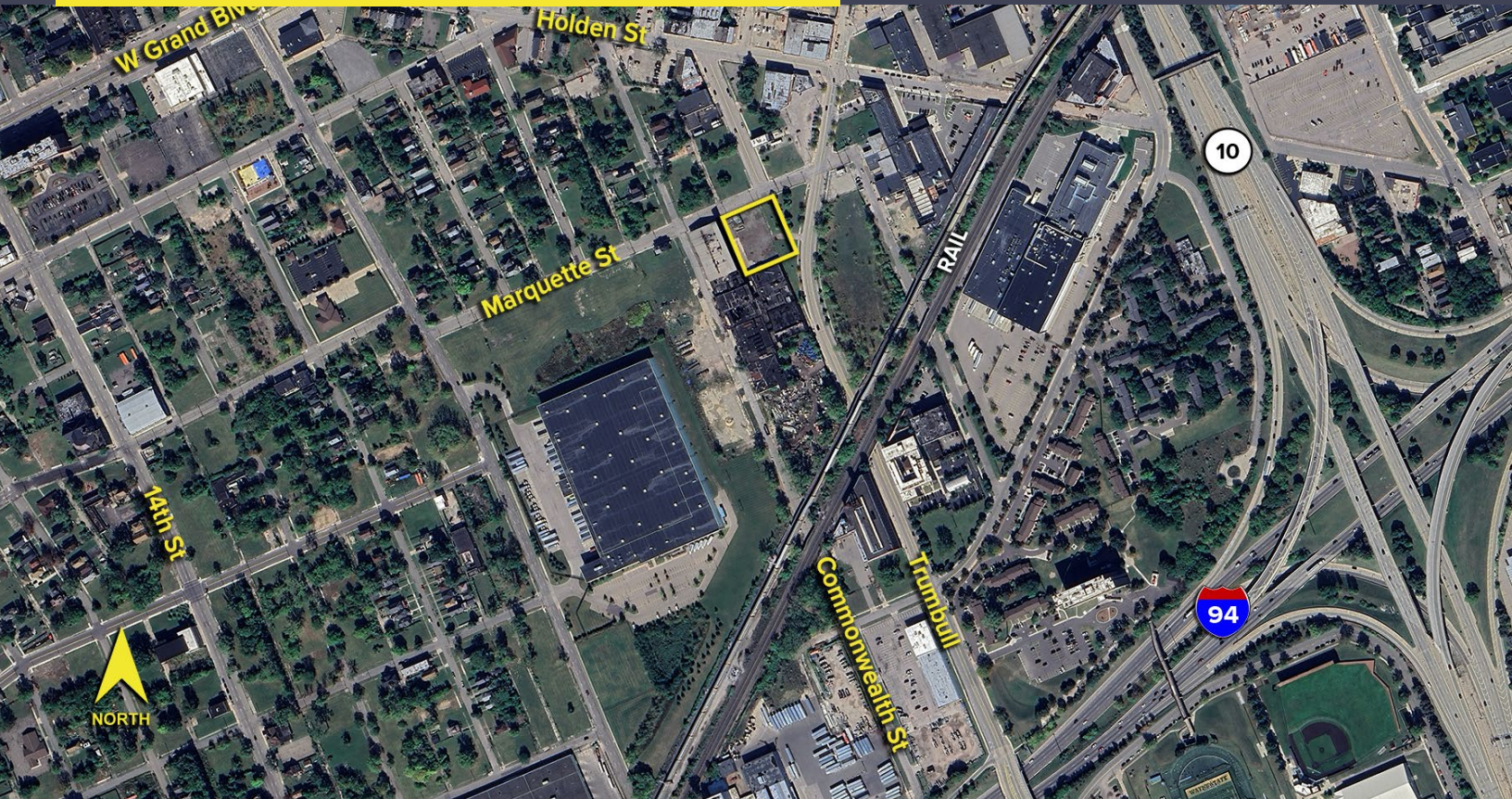


# 5900 COMMONWEALTH STREET DETROIT, MICHIGAN

LAND FOR LEASE  
0.75 Acres Available



**SIGNATURE  
ASSOCIATES**  
KNOW SIGNATURE | KNOW RESULTS



## PROPERTY FEATURES

- 0.75 acres available
- Zoned M4
- Contractor Yard
- Near Henry Ford Hospital & Downtown
- Lease Rate: \$5,000/month Gross



For more information, please contact:

**JOE STACK**  
(248) 359 0615  
jstack@signatureassociates.com

**CHRIS MONSOUR**  
(248) 948 0107  
cmonsour@signatureassociates.com

**SIGNATURE ASSOCIATES**  
One Towne Square, Suite 1200  
Southfield, MI 48076  
www.signatureassociates.com

Information is subject to verification and no liability for errors or omissions is assumed. Price is subject to change and listing withdrawal.

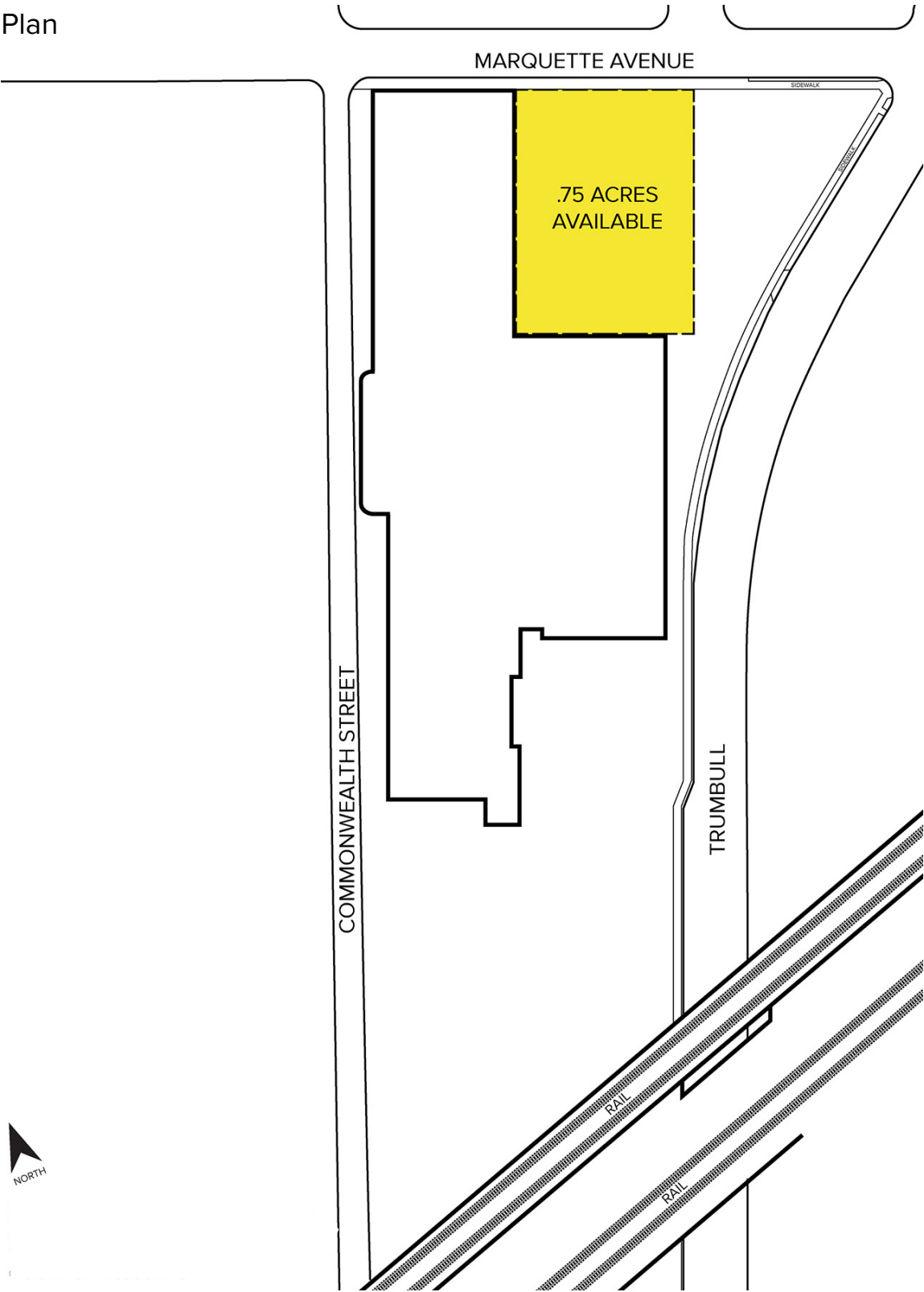


# 5900 Commonwealth Street – Detroit, Michigan

Land For Lease

0.75  
Acres  
AVAILABLE

Site Plan



For more information, please contact:

**JOE STACK**  
(248) 359 0615  
jstack@signatureassociates.com

**CHRIS MONSOUR**  
(248) 948 0107  
cmonsour@signatureassociates.com

**SIGNATURE ASSOCIATES**  
One Towne Square, Suite 1200  
Southfield, MI 48076  
www.signatureassociates.com

Information is subject to verification and no liability for errors or omissions is assumed. Price is subject to change and listing withdrawal.