

17105 Beyer John Dr

Selma, TX 78154



EXPAND WITH EXPERTISE.™

remaxcommercial.com

©2025 RE/MAX, LLC. Each Office Independently
Owned and Operated. 25_295



Lease Information

Asking rent: \$32.00/sf/yr

NNN: \$5.00/sf/yr

Available spaces:

Space 1: 1,600 sf

Space 2: 4,398 sf

(Option to combine spaces for
a total of 5,998 sf)

Availability: Immediate



EXPAND WITH EXPERTISE.™

©2025 RE/MAX, LLC. Each Office Independently Owned and Operated. 25_295

remaxcommercial.com

Property Highlights

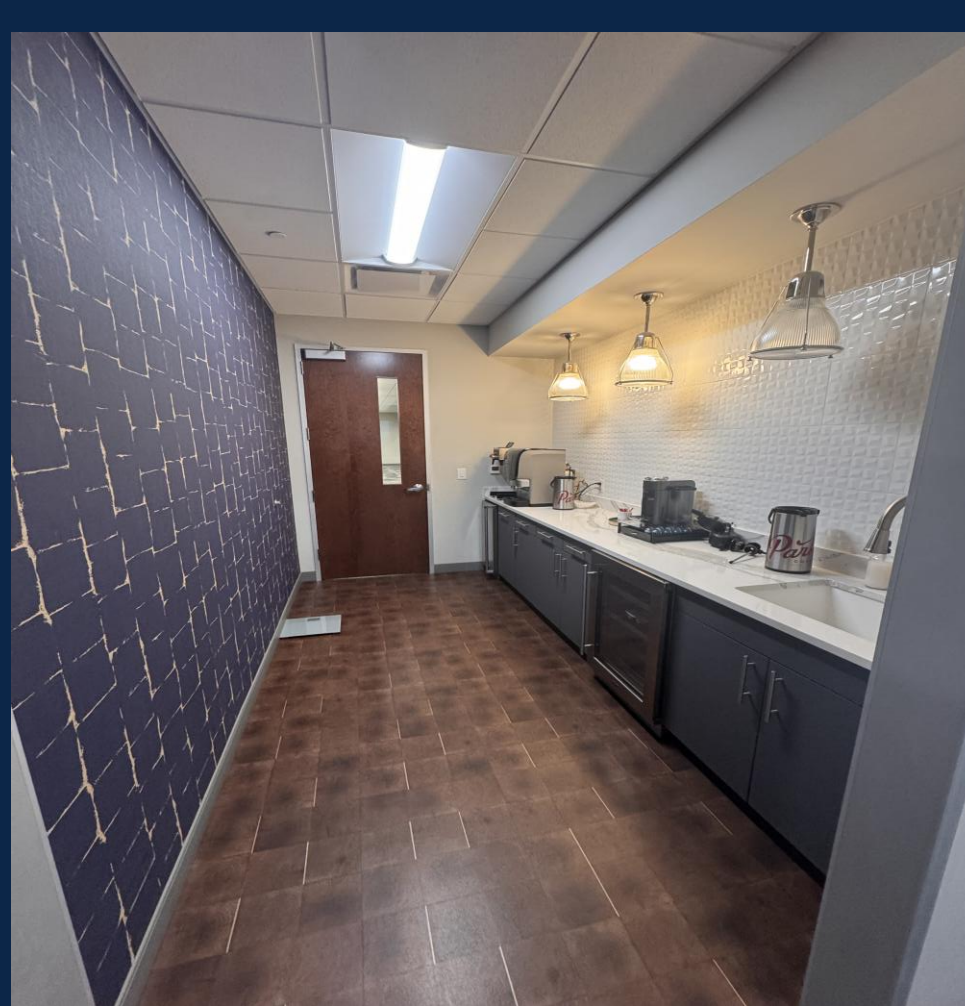
- Functional layout suitable for your office needs
- Modern existing improvements adaptable to tenant needs
- Ample on-site parking
- Professional commercial setting
- Large shared common area/ breakroom
- Exclusive, secure and dedicated tenant entry
- Shared access to a professionally appointed conference room by reservation
- Signage opportunities



Property Details

- Class A office spaces
- Move in ready!
- Fully furnished available
- Water & Electricity included in rent
- Keyless mobile entry
- Gated private parking



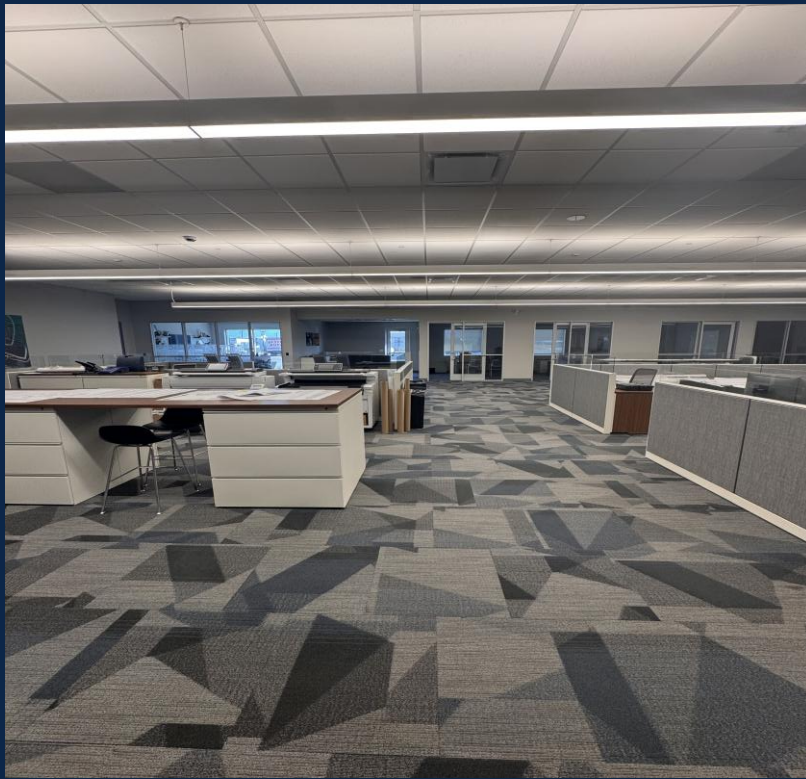


REMAX
COMMERCIAL[®]

EXPAND WITH EXPERTISE.SM

remaxcommercial.com

©2025 RE/MAX, LLC. Each Office Independently
Owned and Operated. 25_295

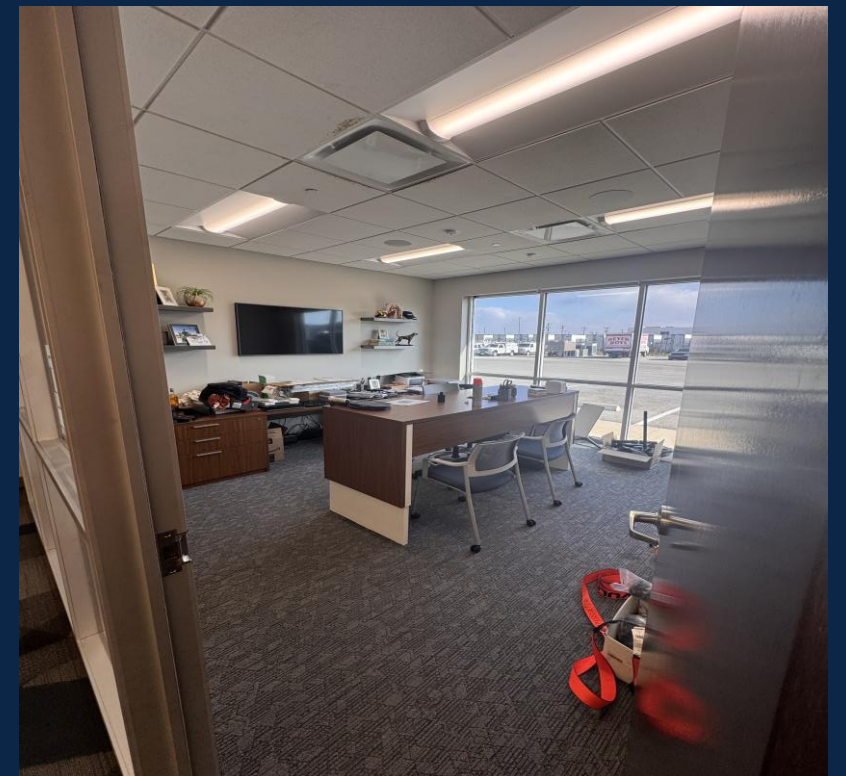


REMAX
COMMERCIAL[®]

EXPAND WITH EXPERTISE.SM

remaxcommercial.com

©2025 RE/MAX, LLC. Each Office Independently
Owned and Operated. 25_295





EXPAND WITH EXPERTISE.SM

remaxcommercial.com

KJ Aukuso

REMAX Corridor

17156 IH-35 N, Schertz, TX 78154

www.remax-corridor-tx.com

KJAUKUSO@REMAX.NET

760-267-7762



©2025 RE/MAX, LLC.
Each Office
Independently
Owned and
Operated. 25_295

