



## Units of All Sizes for Lease

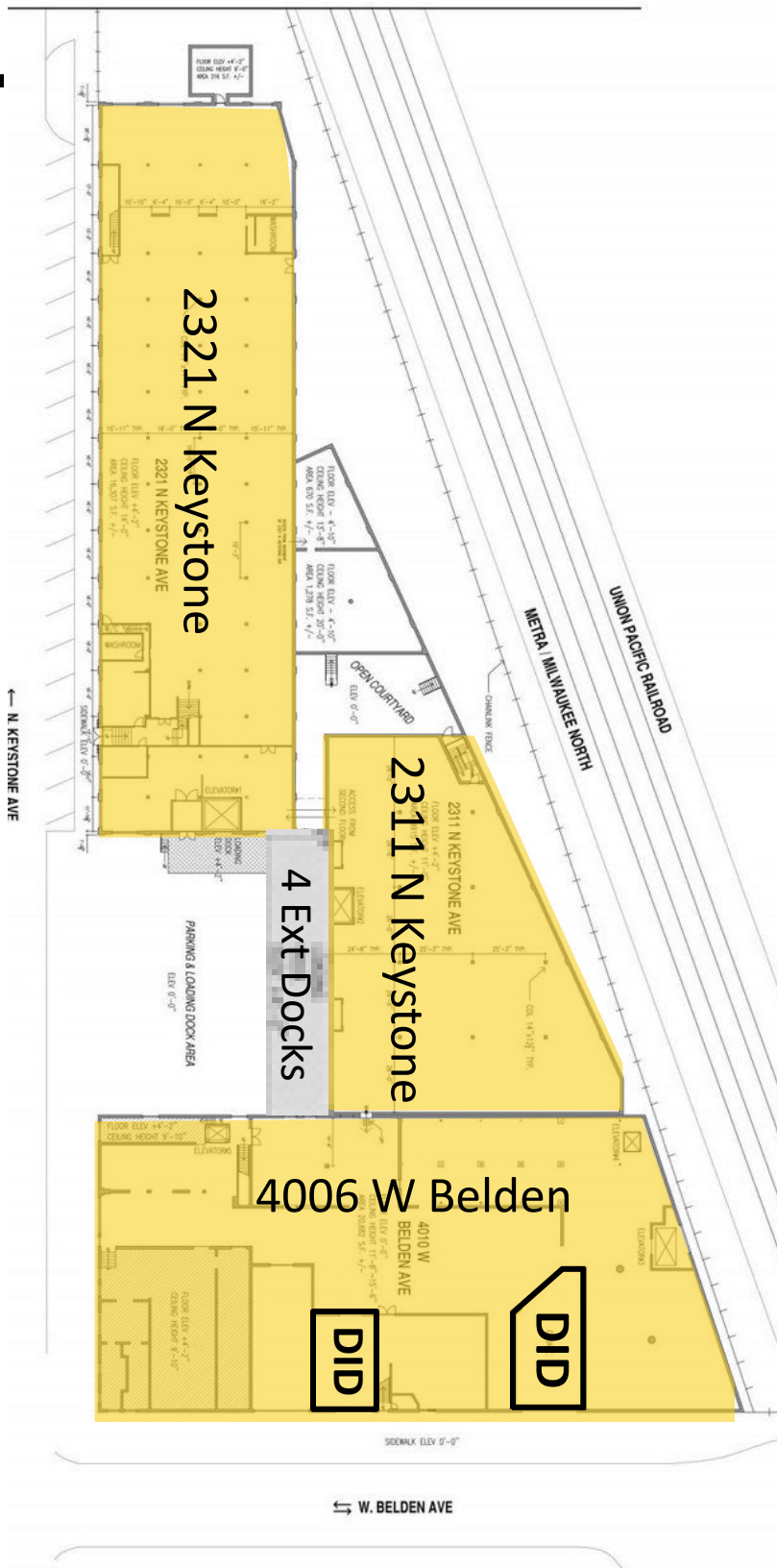
Available Industrial				Other Details	
<b>Unit A</b>	<b>32,614sf divisible</b> <i>1st Floor: +/-16,307sf</i>	<ul style="list-style-type: none"> <li>4 shared exterior docks</li> <li>1 elevator</li> <li>Heating</li> </ul>	\$8psf MG As is	<b>Zoning</b>	M1-1
<b>Unit B</b>	<b>19,830sf divisible</b> <i>2nd Floor: +/- 7,000sf</i>	<ul style="list-style-type: none"> <li>4 shared exterior docks</li> <li>1 elevator</li> <li>Heating</li> </ul>	\$10psf MG As is	<b>Sprinkler</b>	Wet
<b>Unit C</b>	<b>+/- 3,000sf</b>	<ul style="list-style-type: none"> <li>Access to 2 Shared DiD</li> <li>Heating</li> </ul>	\$10psf MG As is	<b>Ceiling Height</b>	12' to 16'
<b>Available Office</b>				<b>Lease Rate</b>	+/- \$10.00 to \$17.50 MG depending on size and improvements
<b>Unit E</b>	<b>+/- 2,000sf</b>	<ul style="list-style-type: none"> <li>2nd story office space</li> </ul>	\$10psf MG As is	<b>Ward</b>	Ward 35
				<b>Alderman</b>	Carlos Ramirez-Rosa

## Get more information

**Steven Kohn, SIOR**  
Principal  
847 849 1912

**Patrick Richwine**  
Associate  
847 653 0981



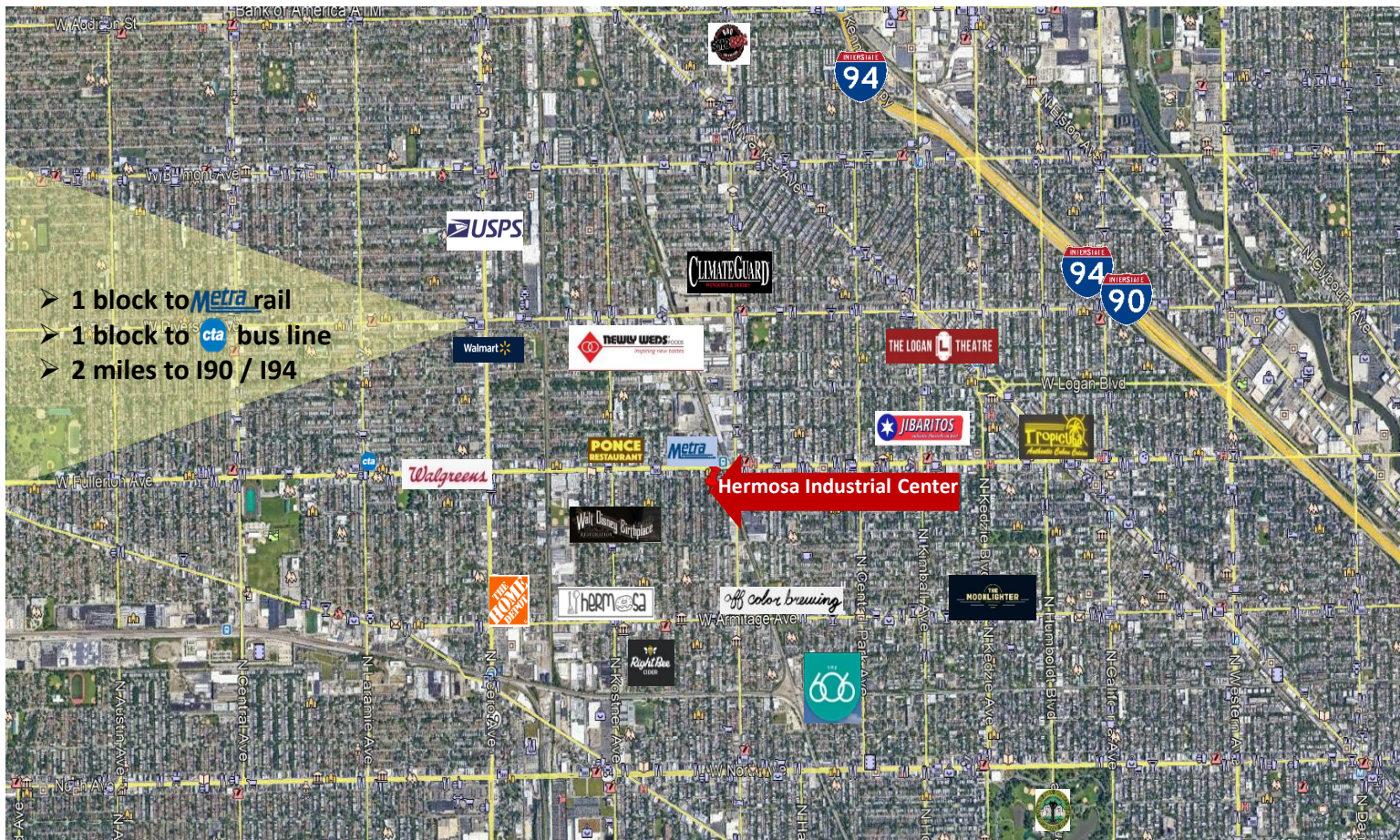


**Steven A. Kohn, SIOR**  
Principal, Industrial Practice Group  
steven.kohn@avisonyoung.com  
D 847 849 1912  
C 847 341 6048

**Patrick Richwine**  
Associate, Industrial Practice Group  
patrick.richwine@avisonyoung.com  
D 847 653 0981  
C 847 471 7129



- 1 block to **Metra** rail
- 1 block to **cta** bus line
- 2 miles to I90 / I94



## Why Chicago?

1. The most diverse manufacturing city in the United States. .83 on Moody's Industrial Index
2. 2nd most Global 500 Headquarters in United States. 10
3. 2nd most Fortune 500 Headquarters in United States. 36
4. 8th most high-tech jobs in the United States. 251,284



**Steven A. Kohn, SIOR**

Principal, Industrial Practice Group  
 steven.kohn@avisonyoung.com  
 D 847 849 1912  
 C 847 341 6048



**Patrick Richwine**

Associate, Industrial Practice Group  
 patrick.richwine@avisonyoung.com  
 D 847 653 0981  
 C 847 471 7129

