

2400 LAKE PARK DR SE
SMYRNA, GA 30080

Lake Park Retail

WHITNEY SPANGLER

+1 404 574 1046

whitney.spangler@colliers.com

DAVID MARTOS

+1 404 574 1003

david.martos@colliers.com

HALEY LYONS

+1 404 877 9248

haley.lyons@colliers.com



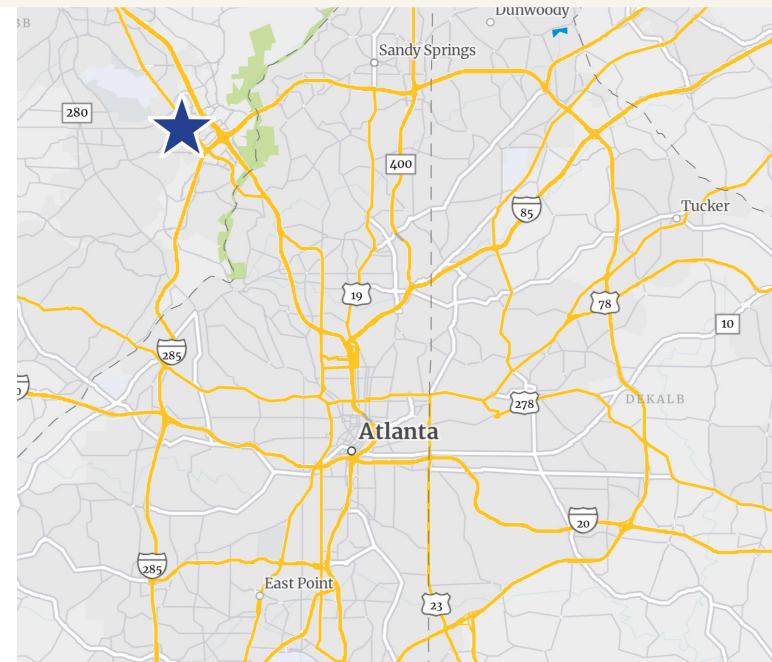
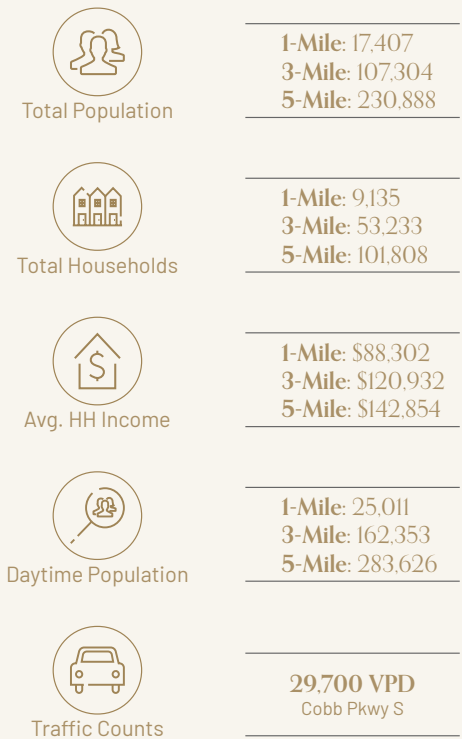
Property Details

Grubb Properties is delivering 16,000 sq ft of new retail space as part of its mixed-use development at 2400 Lake Park Drive. Designed for walkability, these ground-floor spaces will serve residents, office tenants, and nearby visitors. The retail is set within a vibrant streetscape and connects to a future multi-use trail leading to The Battery Atlanta.

KEY HIGHLIGHTS

- 16,375 sq ft retail/active space integrated with a new 277-unit apartment complex
- Retail is positioned facing Cobb Parkway with over 29,700 Vehicles Per Day
- Anchored by multi-use trail access to The Battery & Truist Park, enhancing connectivity

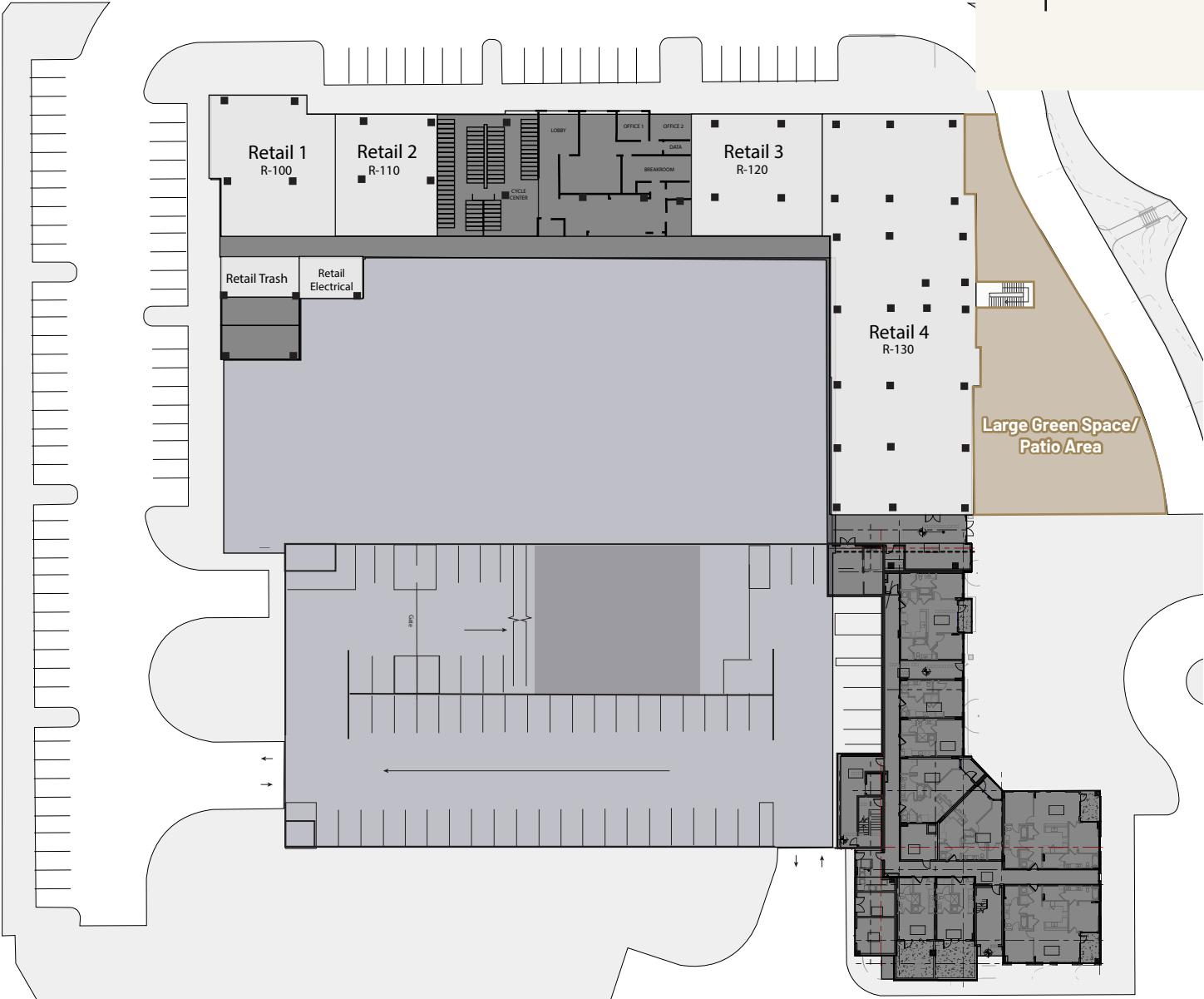
AREA *DEMOGRAPHICS*



Floorplan

Cobb Pkwy SE | 29,700 VPD

RETAIL 1	RETAIL 2
2,642 RSF	1,949 RSF
RETAIL 3	RETAIL 4
2,447 RSF	9,251 RSF
Demisable	
TOTAL RETAIL	
16,375 RSF	



Trade Area

