

120 N ROBERTSON

West Hollywood, CA
TURNKEY FOR LEASE



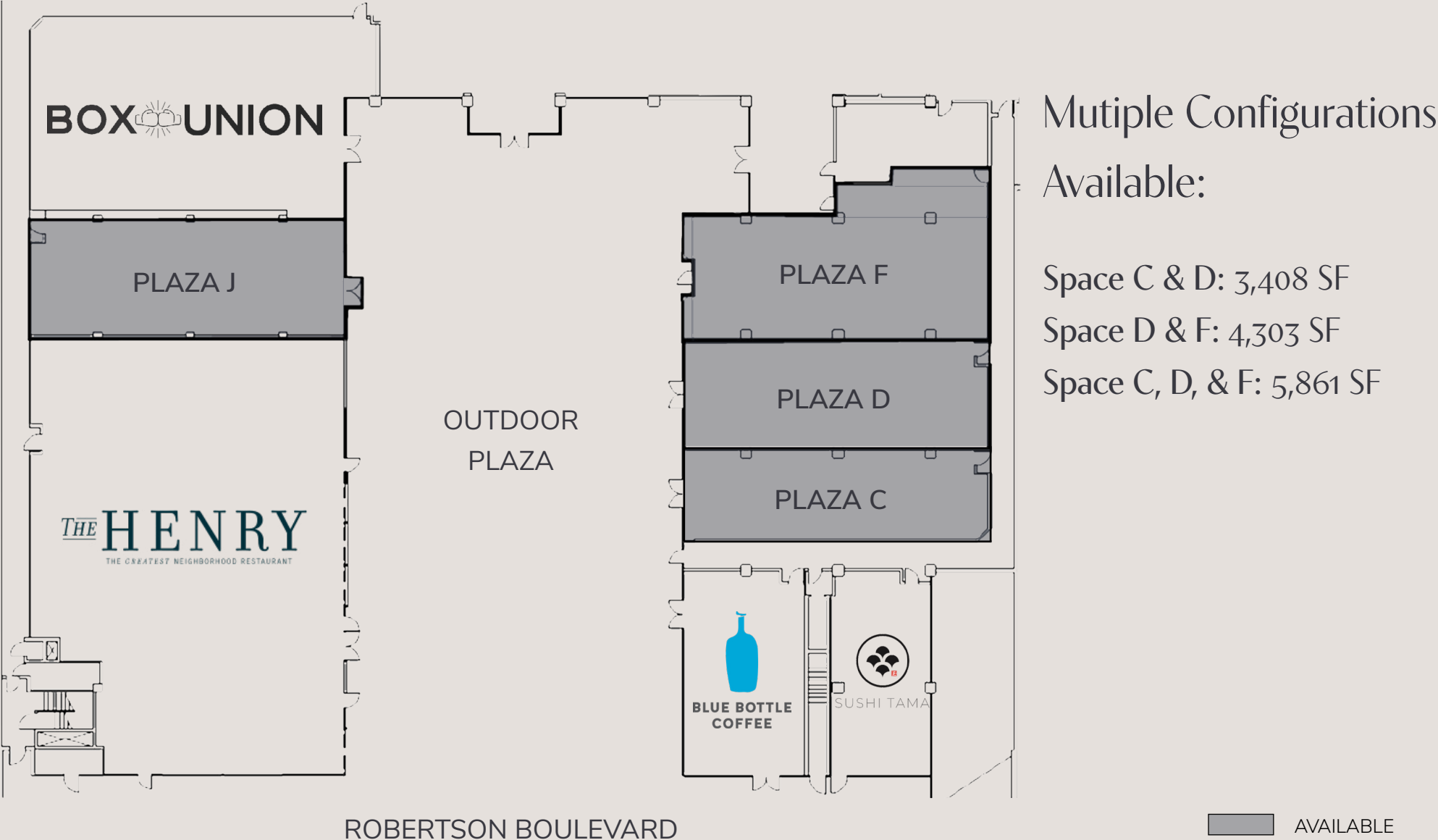


Robertson Plaza



Located on the premier retail and restaurant block of Robertson Boulevard, where Los Angeles meets Beverly Hills meets West Hollywood, Robertson Plaza is at the heart of the street's latest transformation. Now home to a multitude of upscale home furnishing offerings such as Armani Casa, Molteni&C, Cassina, and Robertson House by James Perse, in addition to restaurants The Henry by Sam Fox and world-famous The Ivy.

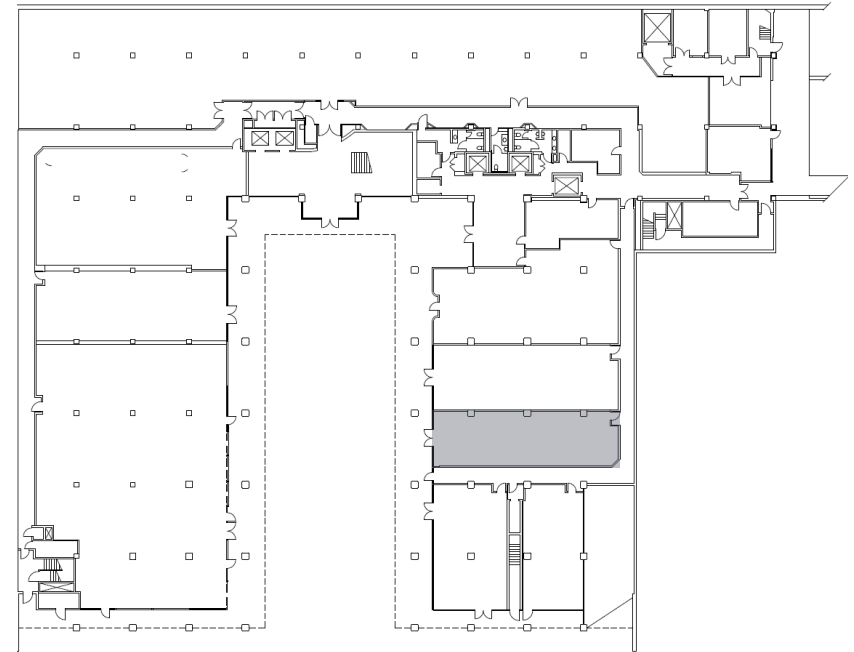
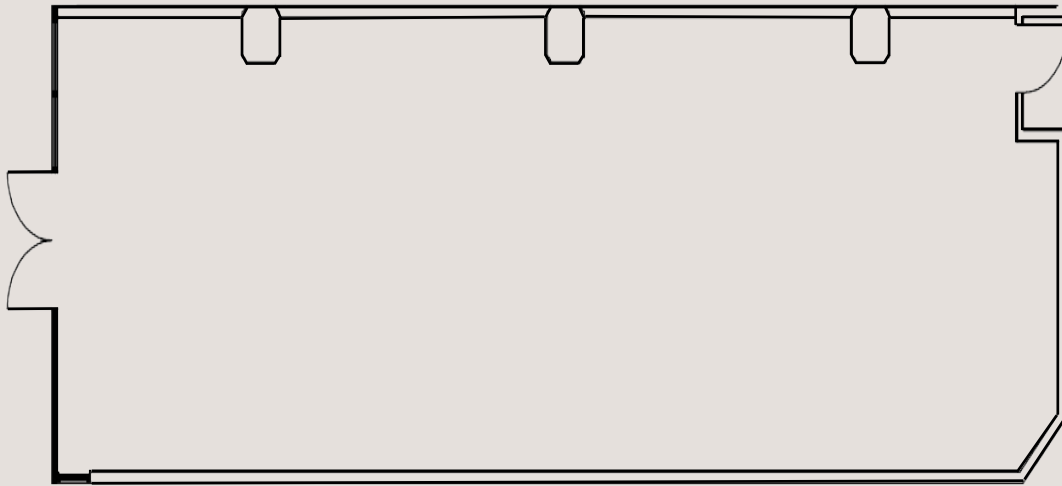
Site Plan



Plaza C

Turnkey Retail Space

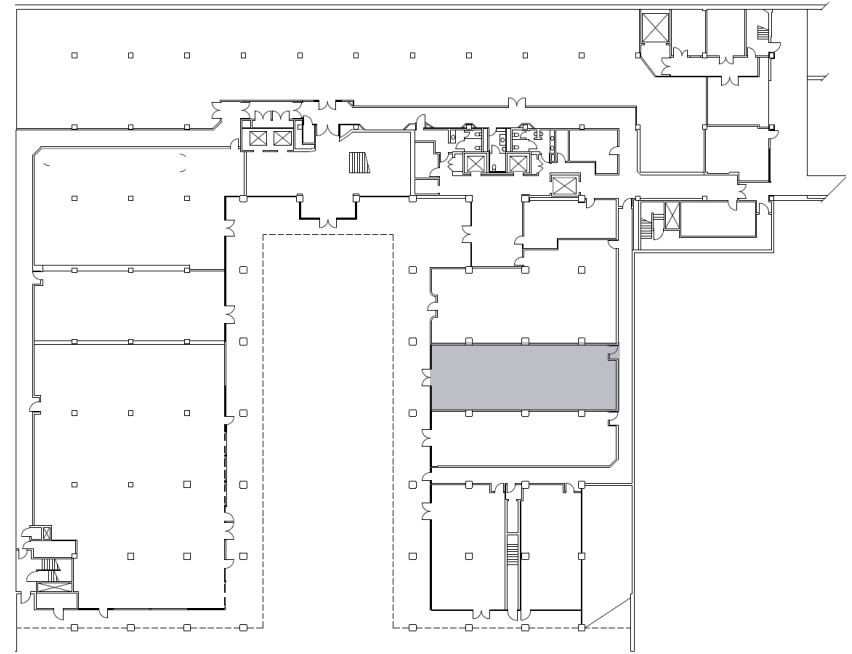
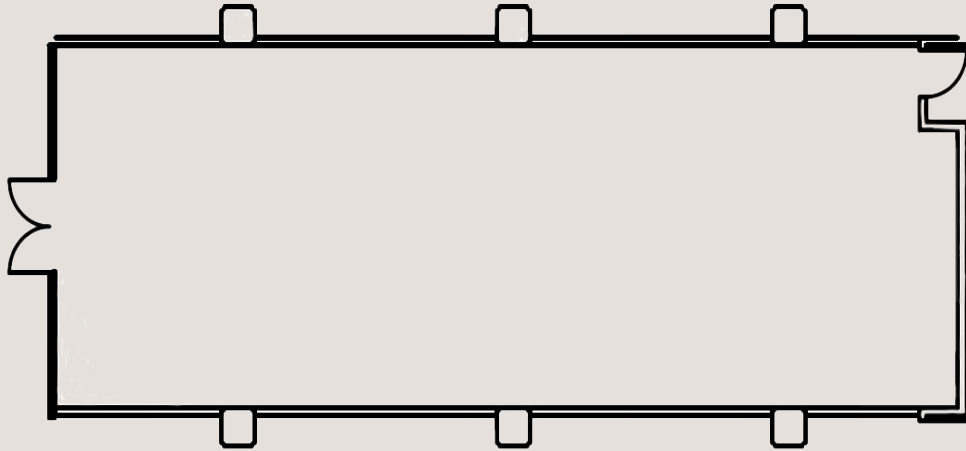
+/- 1,558 RSF



Plaza D

Turnkey Salon Space

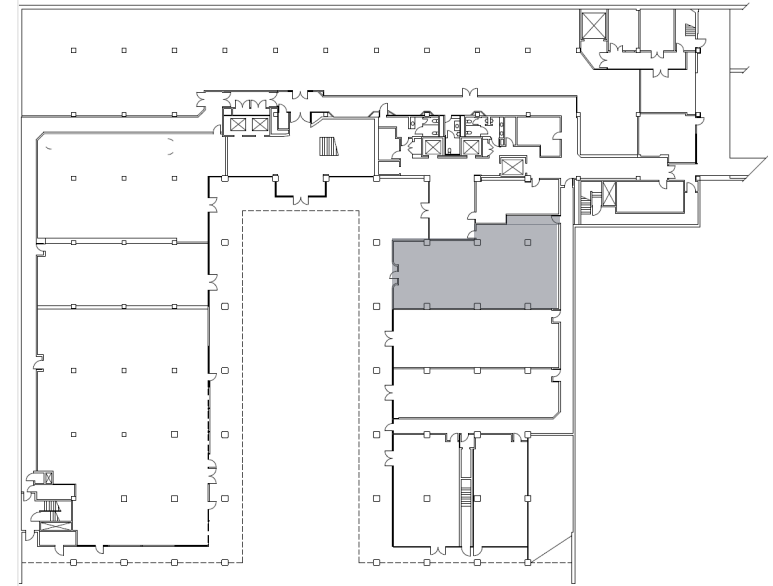
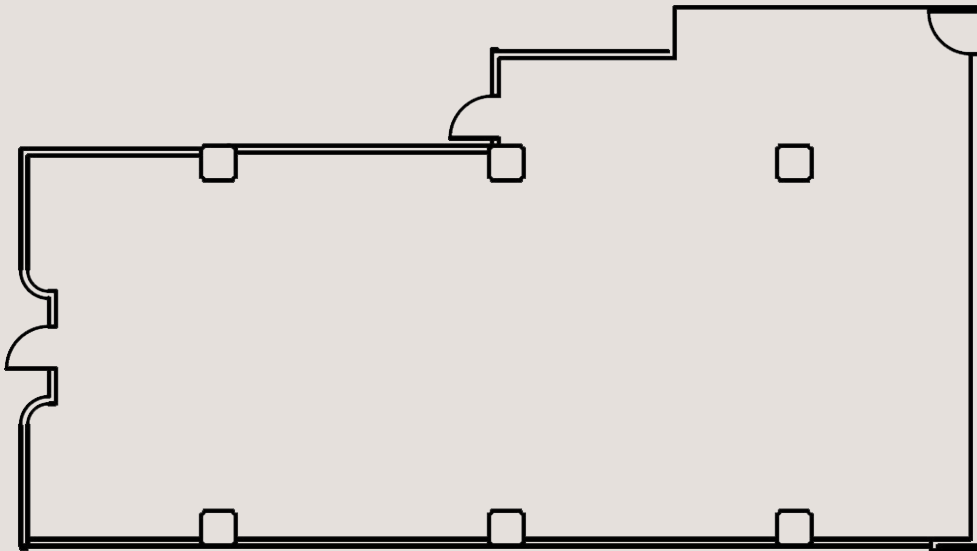
+/- 1,850 RSF



Plaza F

Turnkey Bar Space

+/- 2,453 RSF

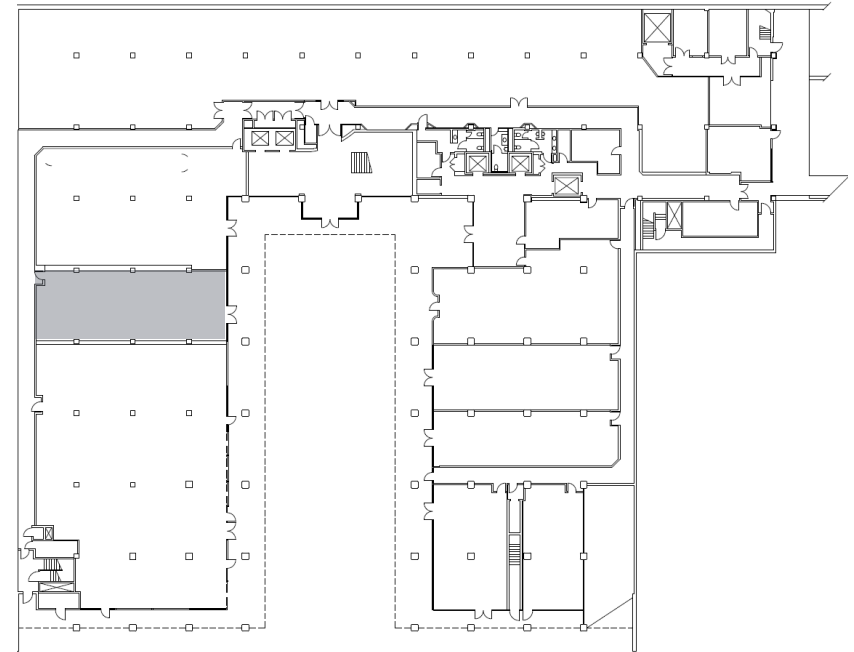
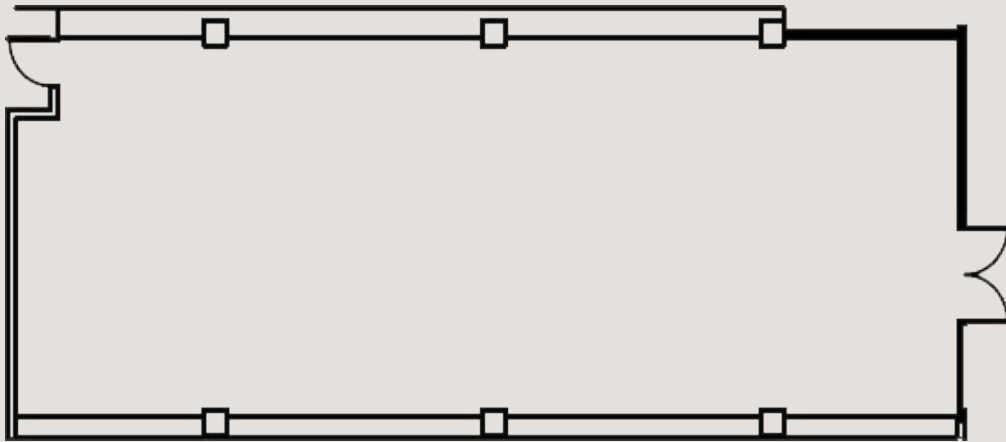




Plaza J

Turnkey Retail Space Opportunity to
convert to Restaurant/F&B

+/- 2,132 RSF





Location

MAP © 2025 CARTIFACT
DATA © OSM/ESRI/GEOBOUNDARIES





MATTHEW FAINCHEIN

RE License #01503546
Managing Director
Mathew.Fainchtein@jll.com
+1 310 430 2548

RYAN HAWLEY

RE License #02146998
Vice President
Ryan.Hawley@jll.com
+1 310 407 2160

MAX KINSBRUNER

RE License #02222058
Senior Associate
Max.Kinsbruner@jll.com
+1 805 338 7622