

# BUENA PARK

## KOREATOWN RETAIL FOR LEASE

7840 Commonwealth Avenue  
Buena Park, California 90621



### PROPERTY INFORMATION

- Unit A ±1,900 SF / Unit B ±1,070 SF
- Newly renovated spaces, move-in ready
- Zoned CG, Retail Sales / Restaurant / Professional / Studio / Service

### HIGHLIGHTS

- Centrally located Buena Park Koreatown location
- Nearby retail: HMart, Hannam Chain, Zion Market, Paris Baguette, Source OC
- 5 & 91 Fwy access, corner lot visibility, ample parking

For More Information Contact Jesse Cho

**CPGI**

213.500.3558 | jesse@cpgi-re.com | cpgi-re.com

2271 W Malvern Ave 245 | Fullerton, California 92833 | CA DRE #01902434



# BUENA PARK

## KOREATOWN RETAIL FOR LEASE



For More Information Contact Jesse Cho

**CPGI**

213.500.3558 | jesse@cpgi-re.com | cpgi-re.com

2271 W Malvern Ave 245 | Fullerton, California 92833 | CA DRE #01902434



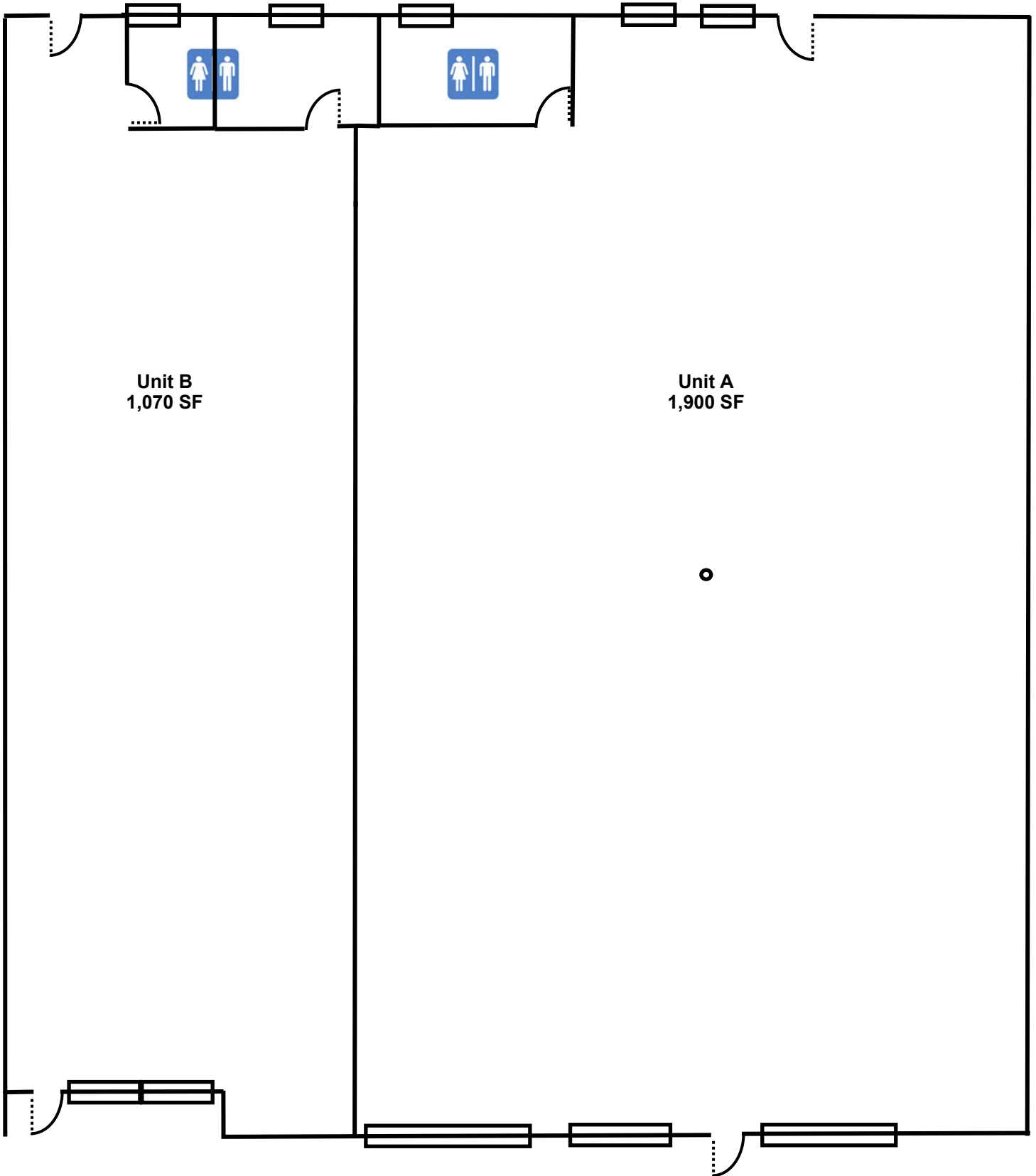
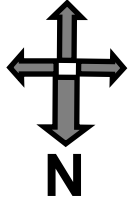


# 7840 Commonwealth Avenue

Buena Park, California 90621

Unit A / 1,900 SF

Unit B / 1,070 SF



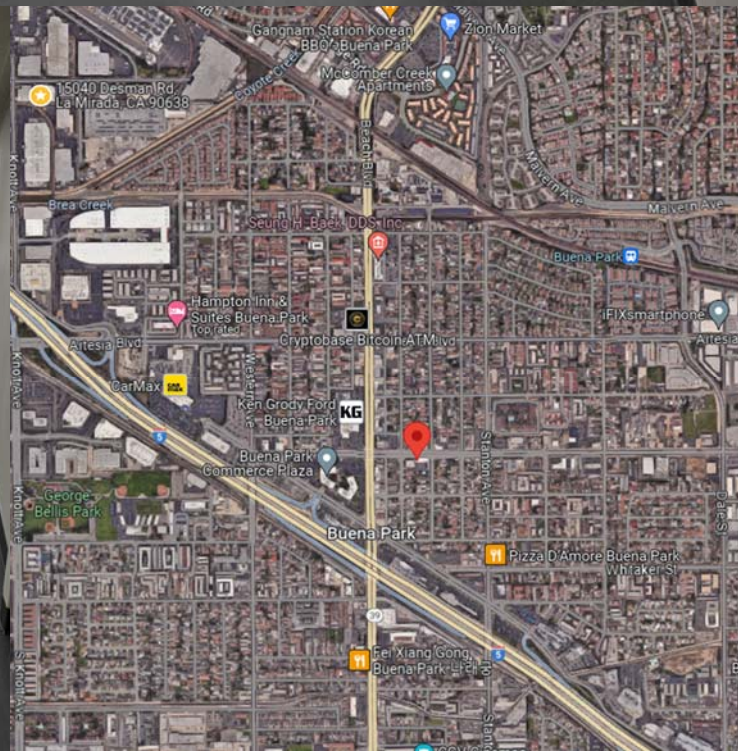
Unit B  
1,070 SF

Unit A  
1,900 SF

\*Plan depiction to show general layout and is not drawn to scale\*

# BUENA PARK

## KOREATOWN RETAIL FOR LEASE



©2024 CPGI

NO WARRANTY OR REPRESENTATION, EXPRESS OR IMPLIED, IS MADE TO THE ACCURACY OR COMPLETENESS OF THE INFORMATION CONTAINED HEREIN, AND SAME IS SUBMITTED SUBJECT TO ERRORS, OMISSIONS, CHANGE OF PRICE, RENTAL OR OTHER CONDITIONS, WITHDRAWAL WITHOUT NOTICE, AND TO ANY SPECIAL LISTING CONDITIONS IMPOSED BY THE PROPERTY OWNER(S). AS APPLICABLE, WE MAKE NO REPRESENTATION AS TO THE CONDITION OF THE PROPERTY (OR PROPERTIES) IN QUESTION.

**CPGI | [cpgi-re.com](http://cpgi-re.com)**

2271 W Malvern Ave 245 | Fullerton, California 92833 | CA DRE #01862441

