

**NOTE FOR FUTURE TENANT RETAIL SPACE:**  
PRIOR TO OCCUPANCY/USE OF THE SPACE, THE TENANT/USER/OWNER SHALL SUBMIT ALTERATION JOB APPLICATION TO THE NYC DOB WITH DOCUMENTS DEMONSTRATING ALL PROPOSED ALTERATION SCOPE OF WORK INCLUDING:  
- THE BUILDING ENVELOPE  
- LIGHTING/ELECTRICAL POWER SYSTEMS AND MECHANICAL SYSTEMS  
ARE IN COMPLIANCE WITH THE NYC EDC CURRENT AT THE TIME OF SUBMISSION, AND SHALL ATTAIN APPROVAL FROM THE NYC DOB.

**NOTE FOR RETAIL SPACE:**  
CONTRACTOR TO PROVIDE TEMPORARY LIGHTING UTILIZING STRING LIGHTS THROUGHOUT RETAIL AREA FOR EMERGENCY LIGHTING PROVIDE BATTERY PACK LIGHTING FIXTURES. POWER TO BE PROVIDED FROM THE PANEL PP-CM-3-436 LOCATED ON 3RD FLOOR. ONCE THIS SPACE GETS DESIGNATED, THEY WILL COMPLY WITH ALL LIGHTING REQUIREMENTS FOR THE SPACE. COORDINATE EXACT LOCATION WITH ARCHITECT. (TYPICAL SPACING OF TEMPORARY LIGHTING 10')

**GENERAL LIGHTING NOTES:**

1. U.O.N. ALL EMERGENCY LIGHTING FIXTURES LABELED TYPE 'E' OR EXIT SIGNS SHALL BE UNSWITCHED. TAP AHEAD OF LOCAL SWITCHED LIGHTING CIRCUIT.
2. ALL EMERGENCY LIGHTING FIXTURES LABELED 'EM' SHALL BE FED FROM PANELBOARD HLP-C-HV U.O.N. CIRCUIT NUMBERS SHOWN ON PLAN.
3. ALL NORMAL LIGHTING FIXTURES SHALL BE FED FROM PANELBOARD HLP-C-HV U.O.N. CIRCUIT NUMBERS SHOWN ON PLAN.
4. EMERGENCY LIGHTING IN COMMERCIAL ELEVATOR LOBBY TO BE ON 24/7 FOR EGRESS SAFETY PURPOSES.

**SHEET KEY-NOTES:**

1. NOT USED.
2. REFER TO DRAWING E-501 FOR FIRE SERVICE ACCESS ELEVATOR SHAFT LIGHTING / LIGHTING CONTROLS DETAILS. ELEVATOR CONTRACTOR OR ELEVATOR CONSULTANT SHALL DETERMINE LOCATION OF FIXTURES, AND EQUIPMENT WITHIN SHAFT FOR PROPER, SAFE OPERATION OF ELEVATOR EQUIPMENT WITHOUT INTERFERENCE AND TO MEET APPLICABLE ELEVATOR SAFETY CODES.

**CONTROLS BY MASTER SWITCH FOR COMMERCIAL TEMPORARY LIGHTING:**

**MASTER SWITCH FOR COMMERCIAL TEMPORARY LIGHTING CONTROL. ONCE THIS SPACE GETS DESIGNATED, THEY WILL COMPLY WITH ALL LIGHTING CONTROL REQUIREMENTS FOR THE SPACE. COORDINATE EXACT LOCATION WITH ARCHITECT.**

**NOTE FOR COMMERCIAL SPACE FOR EMERGENCY LIGHTING PROVIDE BATTERY PACK LIGHTING FIXTURES (TYP.)**

**NOTE FOR FUTURE TENANT RETAIL SPACE:**  
PRIOR TO OCCUPANCY/USE OF THE SPACE, THE TENANT/USER/OWNER SHALL SUBMIT ALTERATION JOB APPLICATION TO THE NYC DOB WITH DOCUMENTS DEMONSTRATING ALL PROPOSED ALTERATION SCOPE OF WORK INCLUDING:  
- THE BUILDING ENVELOPE  
- LIGHTING/ELECTRICAL POWER SYSTEMS AND MECHANICAL SYSTEMS  
ARE IN COMPLIANCE WITH THE NYC EDC CURRENT AT THE TIME OF SUBMISSION, AND SHALL ATTAIN APPROVAL FROM THE NYC DOB.

**NOTE FOR COMMERCIAL SPACE FOR EMERGENCY LIGHTING PROVIDE BATTERY PACK LIGHTING FIXTURES (TYP.)**

**NOTE FOR FUTURE TENANT RETAIL SPACE:**  
PRIOR TO OCCUPANCY/USE OF THE SPACE, THE TENANT/USER/OWNER SHALL SUBMIT ALTERATION JOB APPLICATION TO THE NYC DOB WITH DOCUMENTS DEMONSTRATING ALL PROPOSED ALTERATION SCOPE OF WORK INCLUDING:  
- THE BUILDING ENVELOPE  
- LIGHTING/ELECTRICAL POWER SYSTEMS AND MECHANICAL SYSTEMS  
ARE IN COMPLIANCE WITH THE NYC EDC CURRENT AT THE TIME OF SUBMISSION, AND SHALL ATTAIN APPROVAL FROM THE NYC DOB.

**LIGHTING CONTROLS**

# REFERENCES LIGHTING CONTROLS NARRATIVE DESCRIPTION ON DRAWING EN-016.01

NOTE: ARCHITECT AND LIGHTING DESIGNER TO CONFIRM LOCATIONS AND ELEVATIONS OF ALL LIGHTING CONTROLS, SWITCHING AND LIGHTING FIXTURES.

**NYC BUILDING DEPARTMENT NOTE**  
THIS PLAN IS FOR ECC SCOPE AND APPROVAL ONLY.  
NOTE: IT IS APPLICABLE ONLY TO NYC DOB REVIEW PROCESS. CONTRACTOR MUST PROVIDE ALL WORK SHOWN ON THIS PLAN.)

**NEW YORK CITY BUILDING DEPARTMENT APPROVAL NOTE**  
THIS PLAN IS APPROVED ONLY FOR WORK INDICATED ON THE APPLICATION SPECIFICATION SHEET. ALL OTHER MATTERS SHOWN ARE NOT TO BE RELIED UPON, OR TO BE CONSIDERED AS EITHER BEING APPROVED OR IN ACCORDANCE WITH APPLICABLE CODES.

**NEW YORK CITY ENERGY CONSERVATION CODE**  
TO THE BEST OF MY KNOWLEDGE, BELIEF AND PROFESSIONAL JUDGMENT, THESE PLANS AND SPECIFICATIONS ARE IN COMPLIANCE WITH THE 2016 NEW YORK CITY ENERGY CONSERVATION CODE FOLLOWING ASHRAE 90.1 2013 WITH REQUIRED AMENDMENTS.



NO.	DATE	REVISIONS / SUBMISSIONS	Rev.
16			
15			
14			
13	12.07.2021	ISSUE FOR P&A	7
12	05.14.2021	SWE-031 VITRINE REMOVAL & RESTROOM MODIFICATIONS	6
11	10.29.2020	ADDENDUM #0	5
10	02.28.2020	ADDENDUM #1	4
9	10.11.2019	ADDENDUM #2	3
8	10.11.2019	DOB FILING SUBMISSION	3
7	09.30.2019	DOB FILING SUBMISSION	2
6	09.02.2019	ADDENDUM #2	2
5	07.28.2019	DOB FILING SUBMISSION	1
4	06.28.2019	ISSUE FOR CONSTRUCTION	
3	05.31.2019	90% CONSTRUCTION DOCUMENTS (PROGRESS SUBMISSION)	
2	05.31.2019	DOB FILING SUBMISSION 05.31.19	1
1	06.29.2018	DOB Initial Filing Submission	

**fxcollaborative**

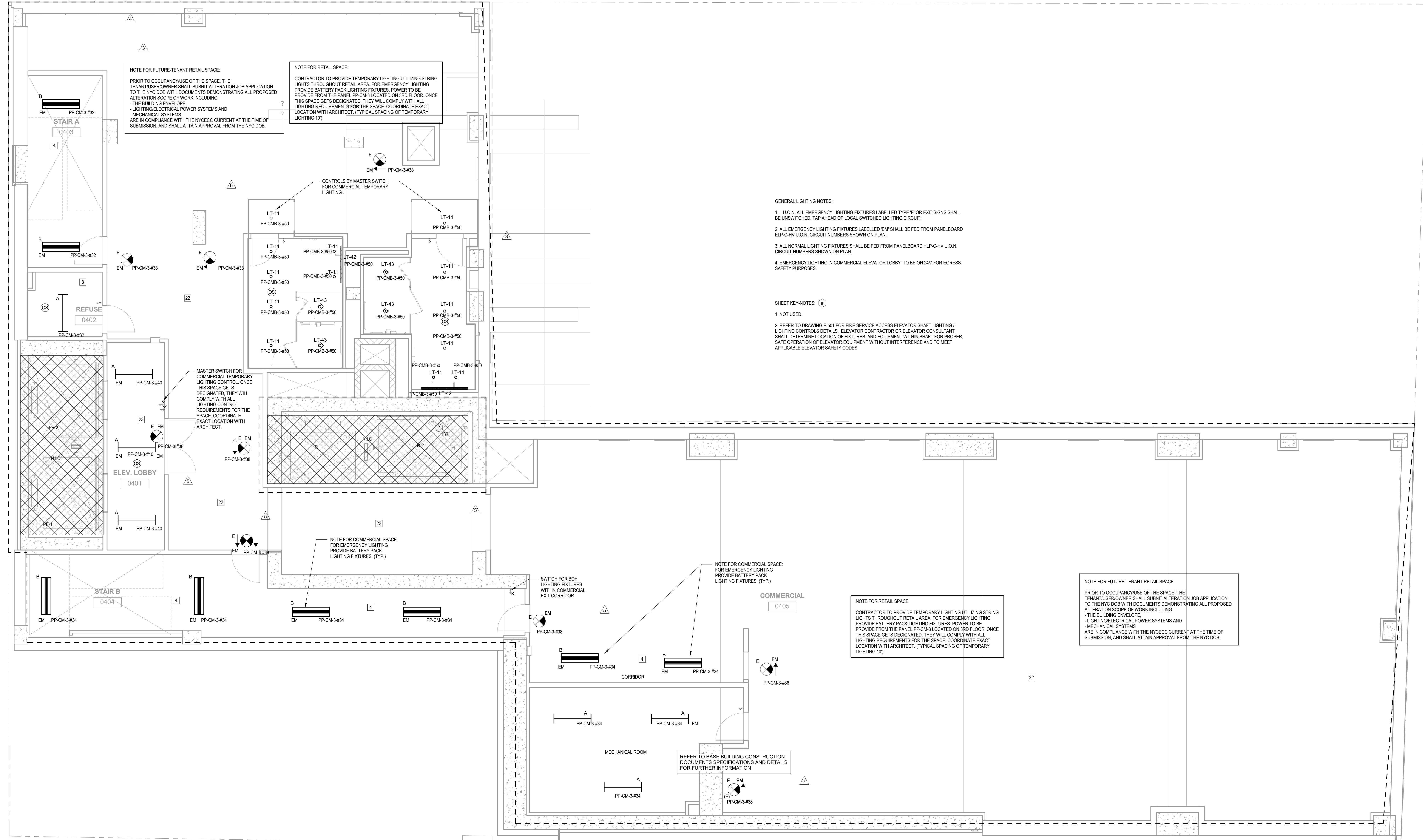
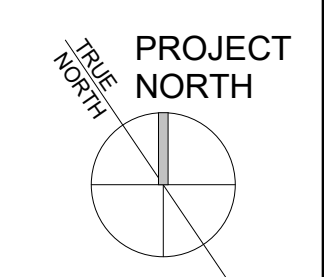
FXCollaborative Architects LLP | 22 West 19th Street | New York, NY 10011 | 212 627 1700 | fxcollaborative.com  
**SEVERUD**  
 469 Seventh Avenue, Suite 900, New York, NY 10018 212-668-3700  
**MG ENGINEERING D.P.C.**  
 116 West 32nd Street, New York, NY 10001 212-643-9005  
**LANGAN**  
 21 Penn Plaza, 300 West 31st Street, 8th Floor, New York, NY 10001 212-476-5400  
**GILSANZ MURRAY STEFICEK LLP**  
 129 West 27th Street, Floor 5, New York, NY 10001 212-254-0030  
**INC Architecture & Design**  
 150 Varot Street, Floor 5, New York, NY 10013 212-473-1665  
**ONELUX Studio**  
 158 West 26th Street, 10th Floor, New York, NY 10001 212-201-9790  
**RKLA Studio**  
 333 Hudson Street, Suite 1001, New York, NY 10013 212-229-2534

**185 Broadway**  
 New York, NY 10038

DRAWING TITLE:  
**3RD FLOOR ELECTRICAL LIGHTING PLAN**

Scale: 1/4" = 1'-0"  
 Project No.: 8126.00  
 Drawn: JD  
 Drawing No.: E-103.00

© 2018 FXCollaborative Architects LLP | All Rights Reserved



- GENERAL LIGHTING NOTES:**
1. U.O.N. ALL EMERGENCY LIGHTING FIXTURES LABELLED TYPE 'E' OR EXIT SIGNS SHALL BE UNSWITCHED. TAP AHEAD OF LOCAL SWITCHED LIGHTING CIRCUIT.
  2. ALL EMERGENCY LIGHTING FIXTURES LABELLED 'EM' SHALL BE FED FROM PANELBOARD HLP-C-HV U.O.N. CIRCUIT NUMBERS SHOWN ON PLAN.
  3. ALL NORMAL LIGHTING FIXTURES SHALL BE FED FROM PANELBOARD HLP-C-HV U.O.N.
  4. EMERGENCY LIGHTING IN COMMERCIAL ELEVATOR LOBBY TO BE ON 24/7 FOR EGRESS SAFETY PURPOSES.

- SHEET KEY-NOTES:**
1. NOT USED.
  2. REFER TO DRAWING E-501 FOR FIRE SERVICE ACCESS ELEVATOR SHAFT LIGHTING / LIGHTING CONTROLS DETAILS. ELEVATOR CONTRACTOR OR ELEVATOR CONSULTANT SHALL DETERMINE LOCATION OF FIXTURES AND EQUIPMENT WITHIN SHAFT FOR PROPER SAFE OPERATION OF ELEVATOR EQUIPMENT WITHOUT INTERFERENCE AND TO MEET APPLICABLE ELEVATOR SAFETY CODES.

**LIGHTING CONTROLS**

# REFERENCES LIGHTING CONTROLS NARRATIVE DESCRIPTION ON DRAWING EN-010-D.

NOTE: ARCHITECT AND LIGHTING DESIGNER TO CONFIRM LOCATIONS AND ELEVATIONS OF ALL LIGHTING CONTROLS, SWITCHING AND LIGHTING FIXTURES.

**NYC BUILDING DEPARTMENT NOTE**  
THIS PLAN IS FOR ECC SCOPE AND APPROVAL ONLY.  
NOTE: IT IS APPLICABLE ONLY TO NYC DOB REVIEW PROCESS. CONTRACTOR MUST PROVIDE ALL WORK SHOWN ON THIS PLAN.)

**NEW YORK CITY BUILDING DEPARTMENT APPROVAL NOTE**  
CONTRACTOR TO PROVIDE TEMPORARY LIGHTING UTILIZING STRING LIGHTS THROUGHOUT RETAIL AREA. FOR EMERGENCY LIGHTING PROVIDE BATTERY PACK LIGHTING FIXTURES. POWER TO BE PROVIDED FROM THE PANEL PP-CM-3 LOCATED ON 3RD FLOOR. ONCE THIS SPACE GETS DESIGNATED, THEY WILL COMPLY WITH ALL LIGHTING REQUIREMENTS FOR THE SPACE. COORDINATE EXACT LOCATION WITH ARCHITECT. (TYPICAL SPACING OF TEMPORARY LIGHTING 10')

**NEW YORK CITY ENERGY CONSERVATION CODE**  
TO THE BEST OF MY KNOWLEDGE, BELIEF AND PROFESSIONAL JUDGMENT, THESE PLANS AND SPECIFICATIONS ARE IN COMPLIANCE WITH THE 2016 NEW YORK CITY ENERGY CONSERVATION CODE FOLLOWING ASHRAE 90.1-2013 WITH REQUIRED AMENDMENTS.



NO.	DATE	REVISIONS / SUBMISSIONS	Rev.
16			
15			
14			
13	12.07.2021	ISSUE FOR P&A	7
12	05.14.2021	SWE-031 VITRINE REMOVAL & RESTROOM MODIFICATIONS	6
11	10.29.2020	ADDENDUM #10	5
10	02.28.2020	ADDENDUM #9	4
9	10.11.2019	ADDENDUM #8	3
8	10.11.2019	DOB FILING SUBMISSION	
7	09.30.2019	DOB FILING SUBMISSION	
6	09.02.2019	ADDENDUM #2	2
5	07.28.2019	DOB FILING SUBMISSION	
4	06.28.2019	ISSUE FOR CONSTRUCTION	
3	05.31.2019	90% CONSTRUCTION DOCUMENTS (PROGRESS SUBMISSION)	
2	05.31.2019	DOB FILING SUBMISSION 05.31.19	1
1	06.29.2018	DOB Initial Filing Submission	

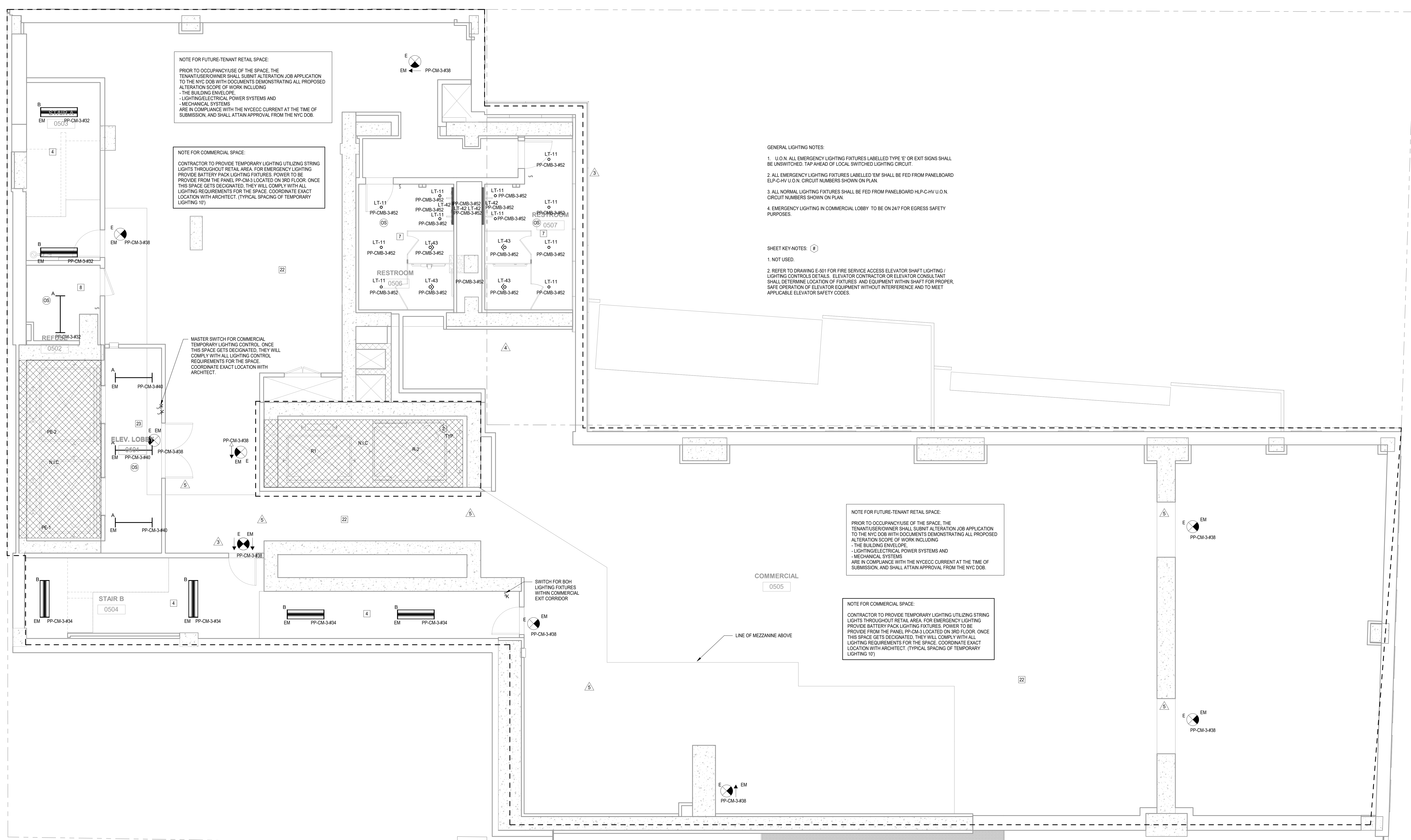
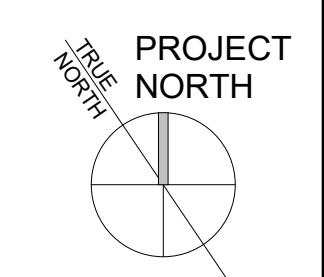
**fxcollaborative**

FXCollaborative Architects LLP | 22 West 19th Street | New York, NY 10011 | 212-627-1700 | fxcollaborative.com  
SEVERUD  
469 Seventh Avenue, Suite 900, New York, NY 10018 212-686-3700  
MG ENGINEERING D.P.C.  
116 West 32nd Street, New York, NY 10001 212-643-9005  
LANGAN  
21 Penn Plaza, 300 West 31st Street, 8th Floor, New York, NY 10001 212-478-5400  
GILSANZ MURRAY STEFICEK LLP  
129 West 27th Street, Floor 5, New York, NY 10001 212-254-0030  
INC Architecture & Design  
150 Varot Street, Floor 5, New York, NY 10013 212-473-1665  
ONELUX Studio  
158 West 26th Street, 10th Floor, New York, NY 10001 212-201-0790  
RKLA Studio  
333 Hudson Street, Suite 1001, New York, NY 10013 212-229-2534

**185 Broadway**  
New York, NY 10038

DRAWING TITLE:  
**4TH FLOOR ELECTRICAL LIGHTING PLAN**

Seal: Drawn: JD Project No.: 8126-00  
Drawing No.: E-104.00  
03/21/19 Scale: 1/4" = 1'-0" 8 of 51



NOTE FOR FUTURE-TENANT RETAIL SPACE:  
PRIOR TO OCCUPANCY USE OF THE SPACE, THE TENANT/USER/OWNER SHALL SUBMIT ALTERATION JOB APPLICATION TO THE NYC DOB WITH DOCUMENTS DEMONSTRATING ALL PROPOSED ALTERATION SCOPE OF WORK INCLUDING:  
- THE BUILDING ENVELOPE  
- LIGHTING/ELECTRICAL POWER SYSTEMS AND MECHANICAL SYSTEMS  
ARE IN COMPLIANCE WITH THE NYC EDC CURRENT AT THE TIME OF SUBMISSION, AND SHALL ATTAIN APPROVAL FROM THE NYC DOB.

NOTE FOR COMMERCIAL SPACE:  
CONTRACTOR TO PROVIDE TEMPORARY LIGHTING UTILIZING STRING LIGHTS THROUGHOUT RETAIL AREA. FOR EMERGENCY LIGHTING PROVIDE BATTERY PACK LIGHTING FIXTURES. POWER TO BE PROVIDED FROM THE PANEL PP-CM-3 LOCATED ON 3RD FLOOR. ONCE THIS SPACE GETS DESIGNATED, THEY WILL COMPLY WITH ALL LIGHTING REQUIREMENTS FOR THE SPACE. COORDINATE EXACT LOCATION WITH ARCHITECT. (TYPICAL SPACING OF TEMPORARY LIGHTING 10')

GENERAL LIGHTING NOTES:  
1. U.O.N. ALL EMERGENCY LIGHTING FIXTURES LABELLED TYPE 'E' OR EXIT SIGNS SHALL BE UNSWITCHED. TAP AHEAD OF LOCAL SWITCHED LIGHTING CIRCUIT.  
2. ALL EMERGENCY LIGHTING FIXTURES LABELLED 'EM' SHALL BE FED FROM PANELBOARD ELP-C-HV U.O.N. CIRCUIT NUMBERS SHOWN ON PLAN.  
3. ALL NORMAL LIGHTING FIXTURES SHALL BE FED FROM PANELBOARD HLP-C-HV U.O.N. CIRCUIT NUMBERS SHOWN ON PLAN.  
4. EMERGENCY LIGHTING IN COMMERCIAL LOBBY TO BE ON 24/7 FOR EGRESS SAFETY PURPOSES.

SHEET KEY-NOTES: (A)  
1. NOT USED.  
2. REFER TO DRAWING E-501 FOR FIRE SERVICE ACCESS ELEVATOR SHAFT LIGHTING / LIGHTING CONTROL DETAILS. ELEVATOR CONTRACTOR OR ELEVATOR CONSULTANT SHALL DETERMINE LOCATION OF FIXTURES AND EQUIPMENT WITHIN SHAFT FOR PROPER SAFE OPERATION OF ELEVATOR EQUIPMENT WITHOUT INTERFERENCE AND TO MEET APPLICABLE ELEVATOR SAFETY CODES.

MASTER SWITCH FOR COMMERCIAL TEMPORARY LIGHTING CONTROL. ONCE THIS SPACE GETS DESIGNATED, THEY WILL COMPLY WITH ALL LIGHTING CONTROL REQUIREMENTS FOR THE SPACE. COORDINATE EXACT LOCATION WITH ARCHITECT.

NOTE FOR FUTURE-TENANT RETAIL SPACE:  
PRIOR TO OCCUPANCY USE OF THE SPACE, THE TENANT/USER/OWNER SHALL SUBMIT ALTERATION JOB APPLICATION TO THE NYC DOB WITH DOCUMENTS DEMONSTRATING ALL PROPOSED ALTERATION SCOPE OF WORK INCLUDING:  
- THE BUILDING ENVELOPE  
- LIGHTING/ELECTRICAL POWER SYSTEMS AND MECHANICAL SYSTEMS  
ARE IN COMPLIANCE WITH THE NYC EDC CURRENT AT THE TIME OF SUBMISSION, AND SHALL ATTAIN APPROVAL FROM THE NYC DOB.

NOTE FOR COMMERCIAL SPACE:  
CONTRACTOR TO PROVIDE TEMPORARY LIGHTING UTILIZING STRING LIGHTS THROUGHOUT RETAIL AREA. FOR EMERGENCY LIGHTING PROVIDE BATTERY PACK LIGHTING FIXTURES. POWER TO BE PROVIDED FROM THE PANEL PP-CM-3 LOCATED ON 3RD FLOOR. ONCE THIS SPACE GETS DESIGNATED, THEY WILL COMPLY WITH ALL LIGHTING REQUIREMENTS FOR THE SPACE. COORDINATE EXACT LOCATION WITH ARCHITECT. (TYPICAL SPACING OF TEMPORARY LIGHTING 10')

**LIGHTING CONTROLS**  
# REFERENCES LIGHTING CONTROLS NARRATIVE DESCRIPTION ON DRAWING EN-010-D

NOTE: ARCHITECT AND LIGHTING DESIGNER TO CONFIRM LOCATIONS AND ELEVATIONS OF ALL LIGHTING CONTROLS, SWITCHING AND LIGHTING FIXTURES.

**NYC BUILDING DEPARTMENT NOTE**  
THIS PLAN IS FOR ECC SCOPE AND APPROVAL ONLY.  
NOTE: IS APPLICABLE ONLY TO NYC DOB REVIEW PROCESS. CONTRACTOR MUST PROVIDE ALL WORK SHOWN ON THIS PLAN.)

**NEW YORK CITY BUILDING DEPARTMENT APPROVAL NOTE**  
TO THE BEST OF MY KNOWLEDGE, BELIEF AND PROFESSIONAL JUDGMENT, THESE PLANS AND SPECIFICATIONS ARE IN COMPLIANCE WITH THE 2016 NEW YORK CITY ENERGY CONSERVATION CODE FOLLOWING ASHRAE 90.1-2013 WITH REQUIRED AMENDMENTS.

**NEW YORK CITY ENERGY CONSERVATION CODE**  
TO THE BEST OF MY KNOWLEDGE, BELIEF AND PROFESSIONAL JUDGMENT, THESE PLANS AND SPECIFICATIONS ARE IN COMPLIANCE WITH THE 2016 NEW YORK CITY ENERGY CONSERVATION CODE FOLLOWING ASHRAE 90.1-2013 WITH REQUIRED AMENDMENTS.



NO.	DATE	REVISIONS / SUBMISSIONS	Rev.
16			
15			
14			
13			
12			
11	10.29.2020	ADDENDUM #10	5
10	02.28.2020	ADDENDUM #9	4
9	10.11.2019	ADDENDUM #8	4
8	10.11.2019	DOB FILING SUBMISSION	3
7	09.30.2019	DOB FILING SUBMISSION	3
6	09.02.2019	ADDENDUM #7	2
5	07.28.2019	DOB FILING SUBMISSION	2
4	06.28.2019	ISSUE FOR CONSTRUCTION	1
3	05.31.2019	90% CONSTRUCTION DOCUMENTS (PROGRESS SUBMISSION)	1
2	05.31.2019	DOB FILING SUBMISSION 05.31.19	1
1	06.29.2018	DOB Initial Filing Submission	1

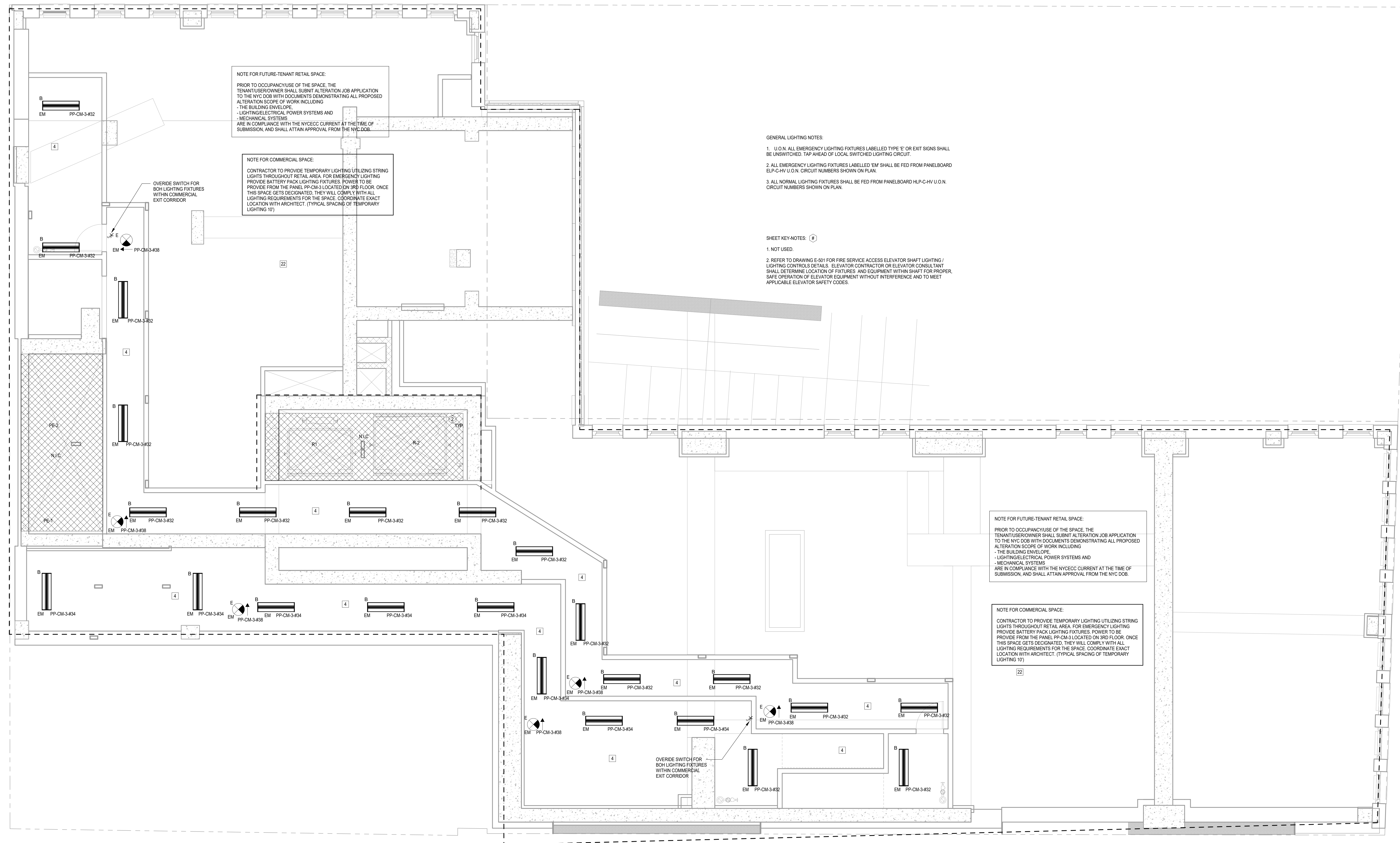
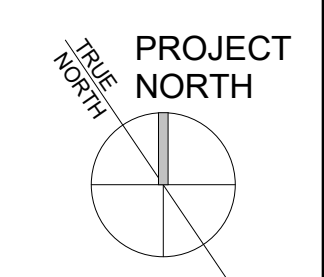


FXCollaborative Architects LLP | 22 West 19th Street | New York, NY 10011 | 212-627-1700 | fxcollaborative.com  
SEVERUD  
460 Seventh Avenue, Suite 900, New York, NY 10018 212-668-3700  
MG ENGINEERING D.P.C.  
116 West 32nd Street, New York, NY 10001 212-643-9005  
LANGAN  
21 Park Plaza, 300 West 31st Street, 8th Floor, New York, NY 10001 212-478-5400  
GILSANZ MURRAY STEFICEK LLP  
129 West 27th Street, Floor 5, New York, NY 10001 212-254-0030  
INC Architecture & Design  
150 Varot Street, Floor 5 South, New York, NY 10013 212-673-1665  
ONELUX Studio  
158 West 26th Street, 10th Floor, New York, NY 10001 212-201-9790  
RKLA Studio  
333 Hudson Street, Suite 1001, New York, NY 10013 212-229-2534

**185 Broadway**  
New York, NY 10038

DRAWING TITLE:  
**5TH FLOOR ELECTRICAL LIGHTING PLAN**

Seal: Drawn: JD Project No.: 8126-00  
Date: 03/21/19 Scale: 1/4" = 1'-0" Drawing No.: E-105.00



**NOTE FOR FUTURE-TENANT RETAIL SPACE:**  
 PRIOR TO OCCUPANCY USE OF THE SPACE, THE TENANT/USER/OWNER SHALL SUBMIT ALTERATION JOB APPLICATION TO THE NYC DOB WITH DOCUMENTS DEMONSTRATING ALL PROPOSED ALTERATION SCOPE OF WORK INCLUDING:  
 - THE BUILDING ENVELOPE  
 - LIGHTING/ELECTRICAL POWER SYSTEMS AND MECHANICAL SYSTEMS  
 ARE IN COMPLIANCE WITH THE NYC EICC CURRENT AT THE TIME OF SUBMISSION, AND SHALL ATTAIN APPROVAL FROM THE NYC DOB.

**NOTE FOR COMMERCIAL SPACE:**  
 CONTRACTOR TO PROVIDE TEMPORARY LIGHTING UTILIZING STRING LIGHTS THROUGHOUT RETAIL AREA. FOR EMERGENCY LIGHTING PROVIDE BATTERY PACK LIGHTING FIXTURES. POWER TO BE PROVIDED FROM THE PANEL, PP-CM-3-432 LOCATED ON 3RD FLOOR. ONCE THIS SPACE GETS DECONATED, THEY WILL COMPLY WITH ALL LIGHTING REQUIREMENTS FOR THE SPACE. COORDINATE EXACT LOCATION WITH ARCHITECT. (TYPICAL SPACING OF TEMPORARY LIGHTING IS 10')

**GENERAL LIGHTING NOTES:**  
 1. U.O.N. ALL EMERGENCY LIGHTING FIXTURES LABELED TYPE 'E' OR EXIT SIGNS SHALL BE UNSWITCHED. TAP AHEAD OF LOCAL SWITCHED LIGHTING CIRCUIT.  
 2. ALL EMERGENCY LIGHTING FIXTURES LABELED 'EM' SHALL BE FED FROM PANELBOARD ELP-C-HV U.O.N. CIRCUIT NUMBERS SHOWN ON PLAN.  
 3. ALL NORMAL LIGHTING FIXTURES SHALL BE FED FROM PANELBOARD HLP-C-HV U.O.N. CIRCUIT NUMBERS SHOWN ON PLAN.

**SHEET KEY-NOTES:**  
 1. NOT USED.  
 2. REFER TO DRAWING E-501 FOR FIRE SERVICE ACCESS ELEVATOR SHAFT LIGHTING / LIGHTING CONTROLS DETAILS. ELEVATOR CONTRACTOR OR ELEVATOR CONSULTANT SHALL DETERMINE LOCATION OF FIXTURES AND EQUIPMENT WITHIN SHAFT FOR PROPER SAFE OPERATION OF ELEVATOR EQUIPMENT WITHOUT INTERFERENCE AND TO MEET APPLICABLE ELEVATOR SAFETY CODES.

**NOTE FOR FUTURE-TENANT RETAIL SPACE:**  
 PRIOR TO OCCUPANCY USE OF THE SPACE, THE TENANT/USER/OWNER SHALL SUBMIT ALTERATION JOB APPLICATION TO THE NYC DOB WITH DOCUMENTS DEMONSTRATING ALL PROPOSED ALTERATION SCOPE OF WORK INCLUDING:  
 - THE BUILDING ENVELOPE  
 - LIGHTING/ELECTRICAL POWER SYSTEMS AND MECHANICAL SYSTEMS  
 ARE IN COMPLIANCE WITH THE NYC EICC CURRENT AT THE TIME OF SUBMISSION, AND SHALL ATTAIN APPROVAL FROM THE NYC DOB.

**NOTE FOR COMMERCIAL SPACE:**  
 CONTRACTOR TO PROVIDE TEMPORARY LIGHTING UTILIZING STRING LIGHTS THROUGHOUT RETAIL AREA. FOR EMERGENCY LIGHTING PROVIDE BATTERY PACK LIGHTING FIXTURES. POWER TO BE PROVIDED FROM THE PANEL, PP-CM-3-432 LOCATED ON 3RD FLOOR. ONCE THIS SPACE GETS DECONATED, THEY WILL COMPLY WITH ALL LIGHTING REQUIREMENTS FOR THE SPACE. COORDINATE EXACT LOCATION WITH ARCHITECT. (TYPICAL SPACING OF TEMPORARY LIGHTING IS 10')

**LIGHTING CONTROLS**  
 # REFERENCES LIGHTING CONTROLS NARRATIVE DESCRIPTION ON DRAWING EN-010.0

NOTE: ARCHITECT AND LIGHTING DESIGNER TO CONFIRM LOCATIONS AND ELEVATIONS OF ALL LIGHTING CONTROLS, SWITCHING AND LIGHTING FIXTURES.

**NYC BUILDING DEPARTMENT NOTE**  
 THIS PLAN IS FOR ECC SCOPE AND APPROVAL ONLY.  
 (NOTE IS APPLICABLE ONLY TO NYC DOB REVIEW PROCESS. CONTRACTOR MUST PROVIDE ALL WORK SHOWN ON THIS PLAN.)

**NEW YORK CITY BUILDING DEPARTMENT APPROVAL NOTE**  
 THIS PLAN IS APPROVED ONLY FOR WORK INDICATED ON THE APPLICATION SPECIFICATION SHEET. ALL OTHER MATTERS SHOWN ARE NOT TO BE RELIED UPON, OR TO BE CONSIDERED AS EITHER BEING APPROVED OR IN ACCORDANCE WITH APPLICABLE CODES.

**NEW YORK CITY ENERGY CONSERVATION CODE**  
 TO THE BEST OF MY KNOWLEDGE, BELIEF AND PROFESSIONAL JUDGMENT, THESE PLANS AND SPECIFICATIONS ARE IN COMPLIANCE WITH THE 2016 NEW YORK CITY ENERGY CONSERVATION CODE FOLLOWING ASHRAE 90.1 2013 WITH REQUIRED AMENDMENTS.



16			
15			
14			
13			
12			
11			
10			
9			
8	10.11.2019	DOB FILING SUBMISSION	
7	09.30.2019	DOB FILING SUBMISSION	
6	09.02.2019	ADDENDUM #2	2
5	07.26.2019	DOB FILING SUBMISSION	
4	06.28.2019	ISSUE FOR CONSTRUCTION	
3	05.31.2019	90% CONSTRUCTION DOCUMENTS (PROGRESS SUBMISSION)	
2	05.31.2019	DOB FILING SUBMISSION 05.31.19	1
1	09.29.2018	DOB Initial Filing Submission	
NO	DATE	REVISIONS / SUBMISSIONS	Rev. Δ

**fxcollaborative**

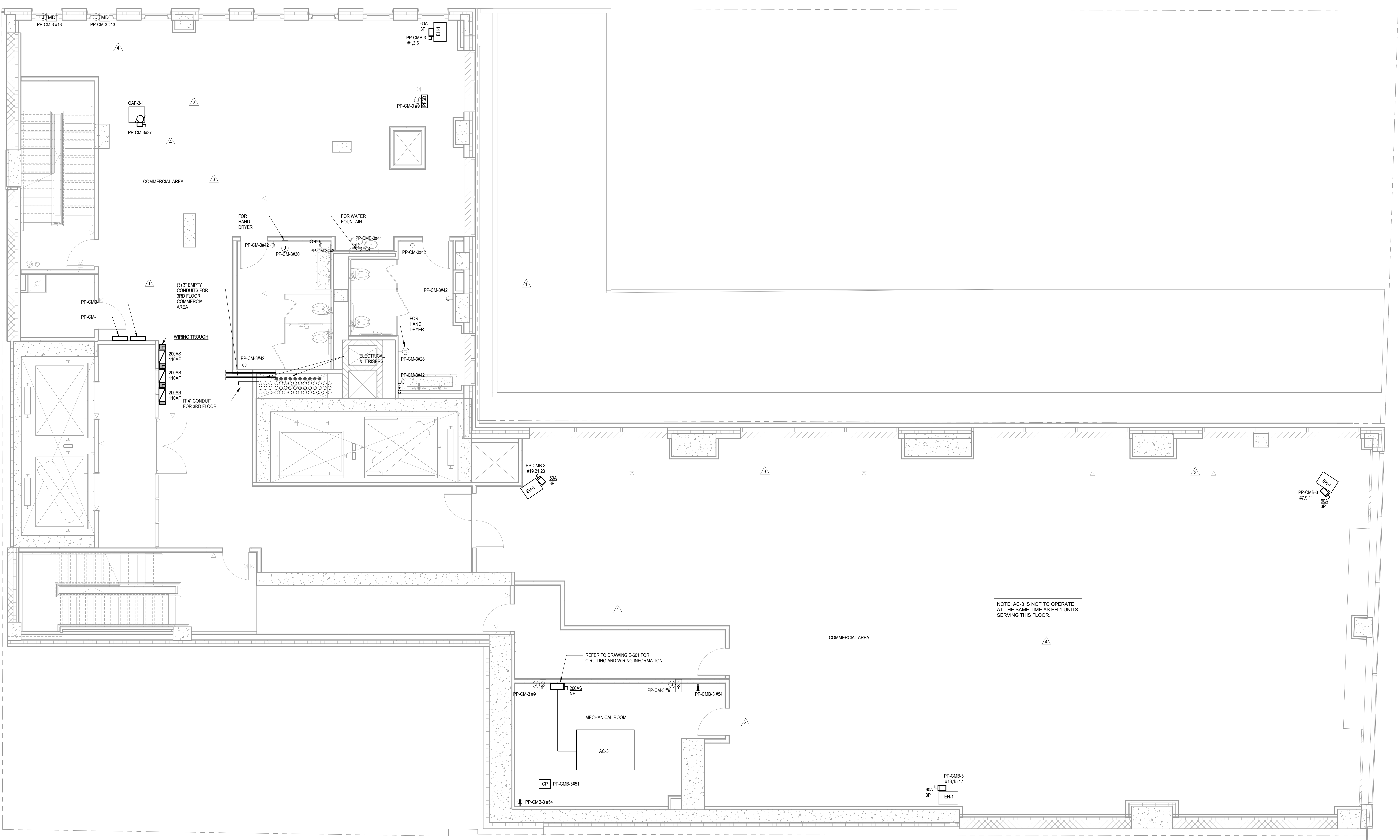
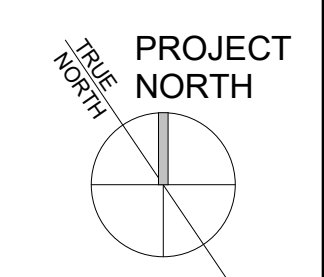
FXCollaborative Architects LLP | 22 West 19th Street | New York, NY 10011 | 212.627.1700 | fxcollaborative.com  
**SEVERUD**  
 469 Seventh Avenue, Suite 900, New York, NY 10018 212.668-3700  
**MG ENGINEERING D.P.C.**  
 116 West 32nd Street, New York, NY 10001 212.643-9005  
**LANGAN**  
 21 Park Plaza, 300 West 31st Street, 8th Floor, New York, NY 10001 212-479-5400  
**GILSANZ MURRAY STEFICEK LLP**  
 129 West 27th Street, Floor 5, New York, NY 10001 212-254-0030  
**INC Architecture & Design**  
 150 Varot Street, Floor 5 South, New York, NY 10013 212.673.1695  
**ONELUX Studio**  
 158 West 29th Street, 10th Floor, New York, NY 10001 212.201-9790  
**RKLA Studio**  
 333 Hudson Street, Suite 1001, New York, NY 10013 212-229-2534

**185 Broadway**  
 New York, NY 10038

DRAWING TITLE:  
**5TH FLOOR MEZZANINE ELECTRICAL LIGHTING PLAN**

Seal: \_\_\_\_\_ Drawn: JD Project No.: 8126.00  
 Drawing No.: \_\_\_\_\_  
 03/21/19 Scale: 1/4" = 1'-0" 10 of 51

**E-106.00**



NO.	DATE	REVISIONS / SUBMISSIONS	Rev.
16			
15			
14			
13			
12			
11			
10			
9	12.07.2021	ISSUE FOR PAA	4
8	05.14.2021	SKE-G22 VITRINE REMOVAL & RESTROOM MODIFICATIONS	3
7	02.28.2020	ADDENDUM #6	2
6	11.11.2019	ADDENDUM #4	1
5	08.30.2019	DOB FILING SUBMISSION	
4	06.28.2019	ISSUE FOR CONSTRUCTION	
3	05.31.2019	90% CONSTRUCTION DOCUMENTS (PROGRESS SUBMISSION)	
2	01.18.2019	DESIGN DEVELOPMENT	
1	09.22.2018	Schematic Design	

**fxcollaborative**

FXCollaborative Architects LLP | 22 West 19th Street | New York, NY 10011 | 212 627 1700 | [fxcollaborative.com](http://fxcollaborative.com)  
**SEVERUD**  
 469 Seventh Avenue, Suite 900, New York, NY 10018 212-686-3700  
**MG ENGINEERING D.P.C.**  
 116 West 32nd Street, New York, NY 10001 212-643-9005  
**LANGAN**  
 21 Park Plaza, 300 West 31st Street, 8th Floor, New York, NY 10001 212-479-5400  
**GILSANZ MURRAY STEFICEK LLP**  
 129 West 27th Street, Floor 5, New York, NY 10001 212-254-0030  
**INC Architecture & Design**  
 150 Varot Street, Floor 5 South, New York, NY 10013 212-673-1695  
**ONELUX Studio**  
 158 West 29th Street, 10th Floor, New York, NY 10001 212-201-9790  
**RKLA Studio**  
 333 Hudson Street, Suite 1001, New York, NY 10013 212-229-2534

**185 Broadway**  
 New York, NY 10038

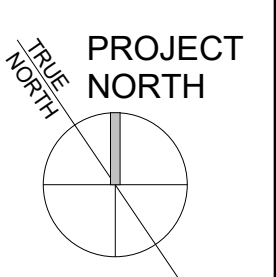
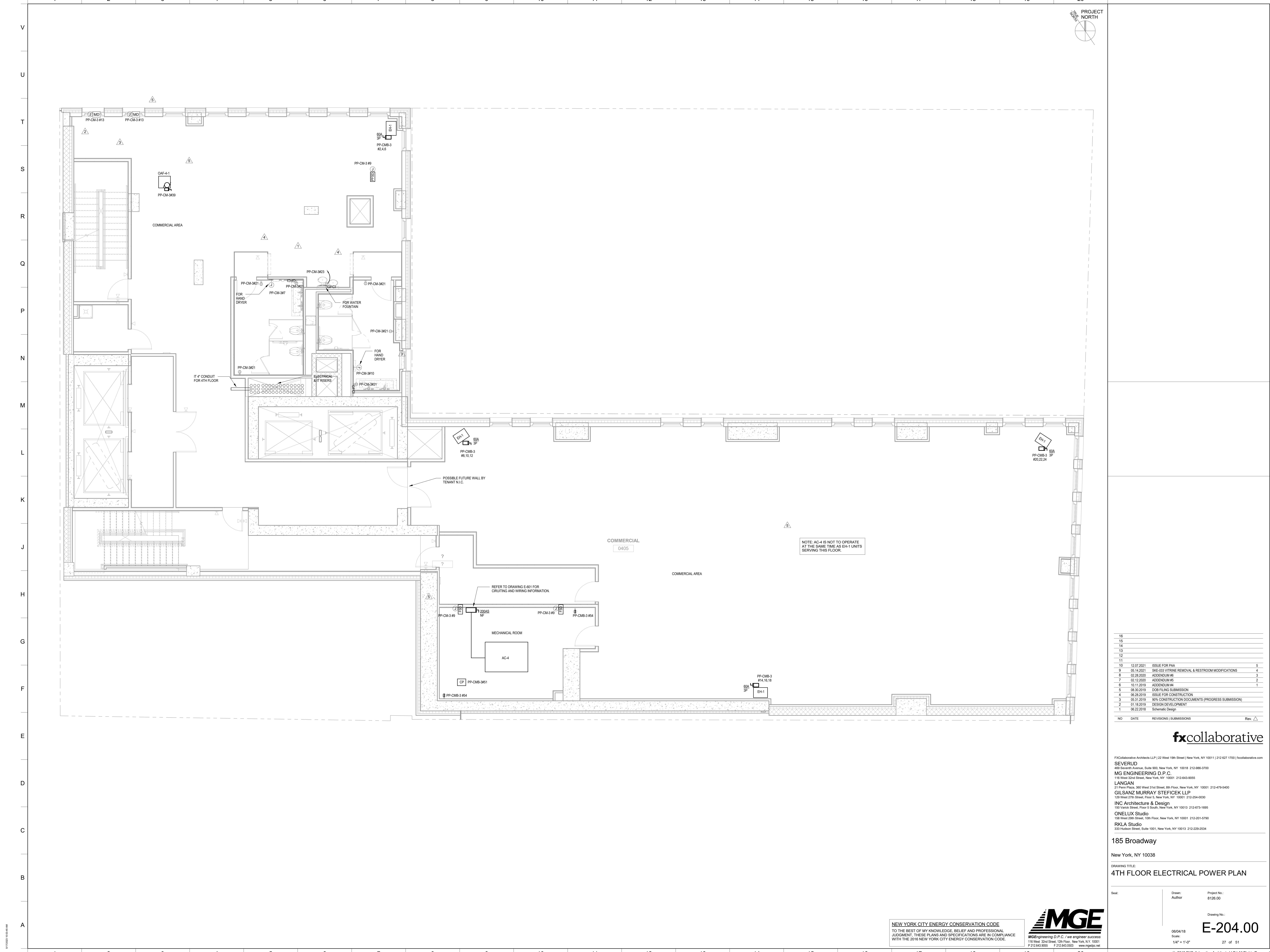
DRAWING TITLE:  
**3RD FLOOR ELECTRICAL POWER PLAN**

Seal: \_\_\_\_\_ Drawn: \_\_\_\_\_ Project No.: 8126 00  
 Author: \_\_\_\_\_

Drawing No.: **E-203.00**  
 Date: 03/26/18  
 Scale: 1/4" = 1'-0"  
 26 of 51

**NEW YORK CITY ENERGY CONSERVATION CODE**  
 TO THE BEST OF MY KNOWLEDGE, BELIEF AND PROFESSIONAL JUDGMENT, THESE PLANS AND SPECIFICATIONS ARE IN COMPLIANCE WITH THE 2016 NEW YORK CITY ENERGY CONSERVATION CODE.





NO.	DATE	REVISIONS / SUBMISSIONS	Rev.
16			
15			
14			
13			
12			
11			
10	12.07.2021	ISSUE FOR PAA	3
9	05.14.2021	SKE-033 VITRINE REMOVAL & RESTROOM MODIFICATIONS	4
8	02.28.2020	ADDENDUM #6	3
7	02.12.2020	ADDENDUM #6	2
6	10.11.2019	ADDENDUM #4	1
5	08.30.2019	DOB FILING SUBMISSION	
4	06.28.2019	ISSUE FOR CONSTRUCTION	
3	05.31.2019	90% CONSTRUCTION DOCUMENTS (PROGRESS SUBMISSION)	
2	01.18.2019	DESIGN DEVELOPMENT	
1	09.22.2018	Schematic Design	

**fxcollaborative**

FXCollaborative Architects LLP | 22 West 19th Street | New York, NY 10011 | 212 627 1700 | [fxcollaborative.com](http://fxcollaborative.com)  
**SEVERUD**  
 469 Seventh Avenue, Suite 900, New York, NY 10018 212-686-3700  
**MG ENGINEERING D.P.C.**  
 116 West 32nd Street, New York, NY 10001 212-643-9005  
**LANGAN**  
 21 Park Place, 300 West 31st Street, 8th Floor, New York, NY 10001 212-479-5400  
**GILSANZ MURRAY STEFICEK LLP**  
 129 West 27th Street, Floor 5, New York, NY 10001 212-254-0030  
**INC Architecture & Design**  
 150 Varot Street, Floor 5 South, New York, NY 10013 212-473-1695  
**ONELUX Studio**  
 158 West 29th Street, 10th Floor, New York, NY 10001 212-201-9790  
**RKLA Studio**  
 333 Hudson Street, Suite 1001, New York, NY 10013 212-229-2534

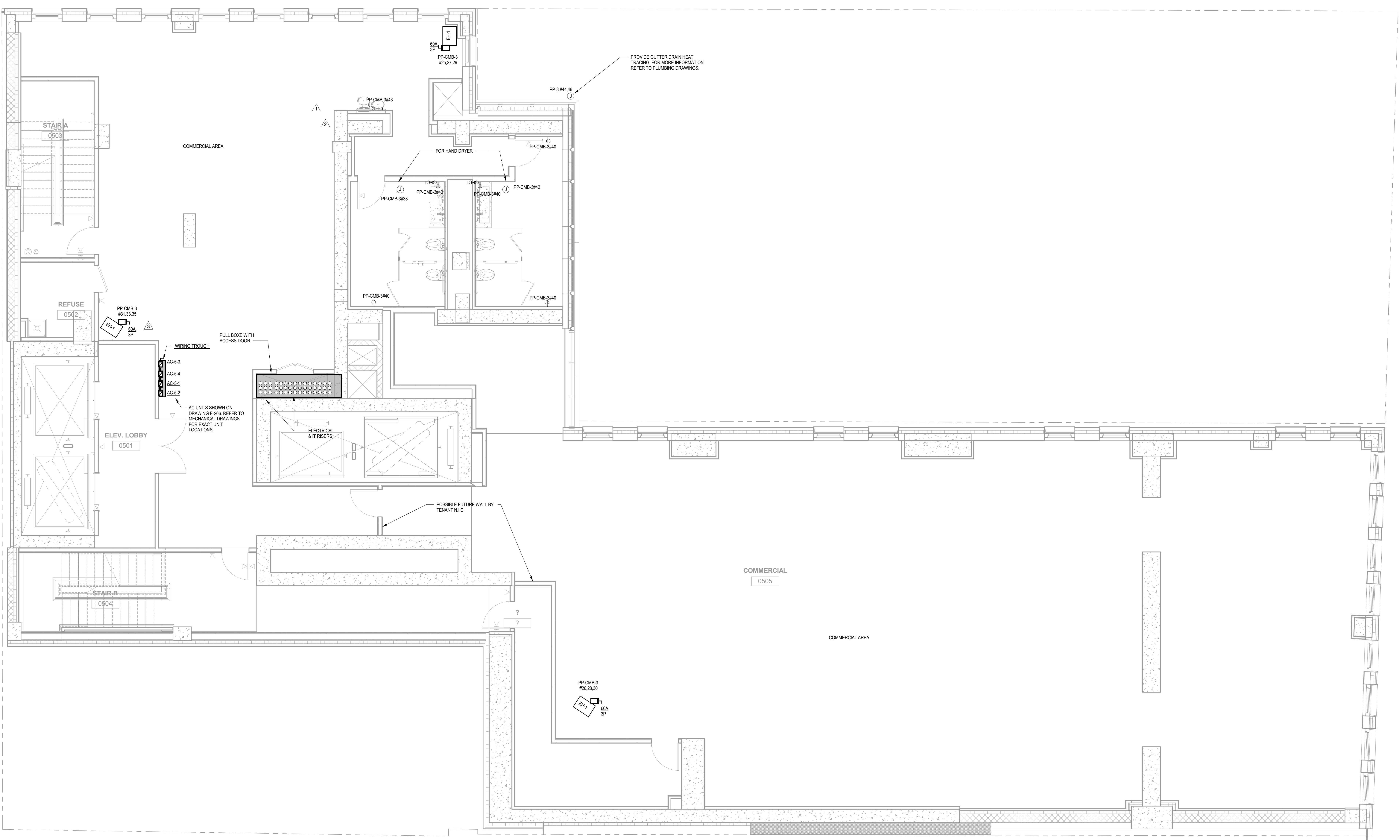
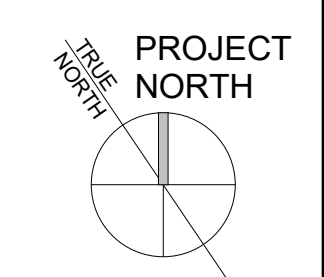
**185 Broadway**  
 New York, NY 10038

DRAWING TITLE:  
**4TH FLOOR ELECTRICAL POWER PLAN**

Seal: \_\_\_\_\_ Drawn: \_\_\_\_\_ Project No.: 8126 00  
 Author: \_\_\_\_\_  
 Drawing No.: \_\_\_\_\_  
 06/04/18  
 Scale: 1/4" = 1'-0"  
**E-204.00**  
 27 of 51

**NEW YORK CITY ENERGY CONSERVATION CODE**  
 TO THE BEST OF MY KNOWLEDGE, BELIEF AND PROFESSIONAL JUDGMENT, THESE PLANS AND SPECIFICATIONS ARE IN COMPLIANCE WITH THE 2016 NEW YORK CITY ENERGY CONSERVATION CODE.





NO.	DATE	REVISIONS / SUBMISSIONS	Rev.
16			
15			
14			
13			
12			
11			
10			
9			
8	12.07.2021	ISSUE FOR PAA	3
7	02.28.2020	ADDENDUM #6	2
6	10.11.2019	ADDENDUM #4	1
5	08.30.2019	DOB FILING SUBMISSION	
4	06.28.2019	ISSUE FOR CONSTRUCTION	
3	05.31.2019	90% CONSTRUCTION DOCUMENTS (PROGRESS SUBMISSION)	
2	01.18.2019	DESIGN DEVELOPMENT	
1	09.22.2018	Schematic Design	

**fxcollaborative**

FXCollaborative Architects LLP | 22 West 19th Street | New York, NY 10011 | 212 627 1700 | fxcollaborative.com  
**SEVERUD**  
 460 Seventh Avenue, Suite 900, New York, NY 10018 212-668-3700  
**MG ENGINEERING D.P.C.**  
 116 West 32nd Street, New York, NY 10001 212-643-9005  
**LANGAN**  
 21 Park Plaza, 300 West 31st Street, 8th Floor, New York, NY 10001 212-479-5400  
**GILSANZ MURRAY STEFICEK LLP**  
 129 West 27th Street, Floor 5, New York, NY 10001 212-254-0030  
**INC Architecture & Design**  
 150 Varot Street, Floor 5 South, New York, NY 10013 212-673-1695  
**ONELUX Studio**  
 158 West 29th Street, 10th Floor, New York, NY 10001 212-201-9790  
**RKLA Studio**  
 333 Hudson Street, Suite 1001, New York, NY 10013 212-229-2534

**185 Broadway**  
 New York, NY 10038

DRAWING TITLE:  
**5TH FLOOR ELECTRICAL POWER PLAN**

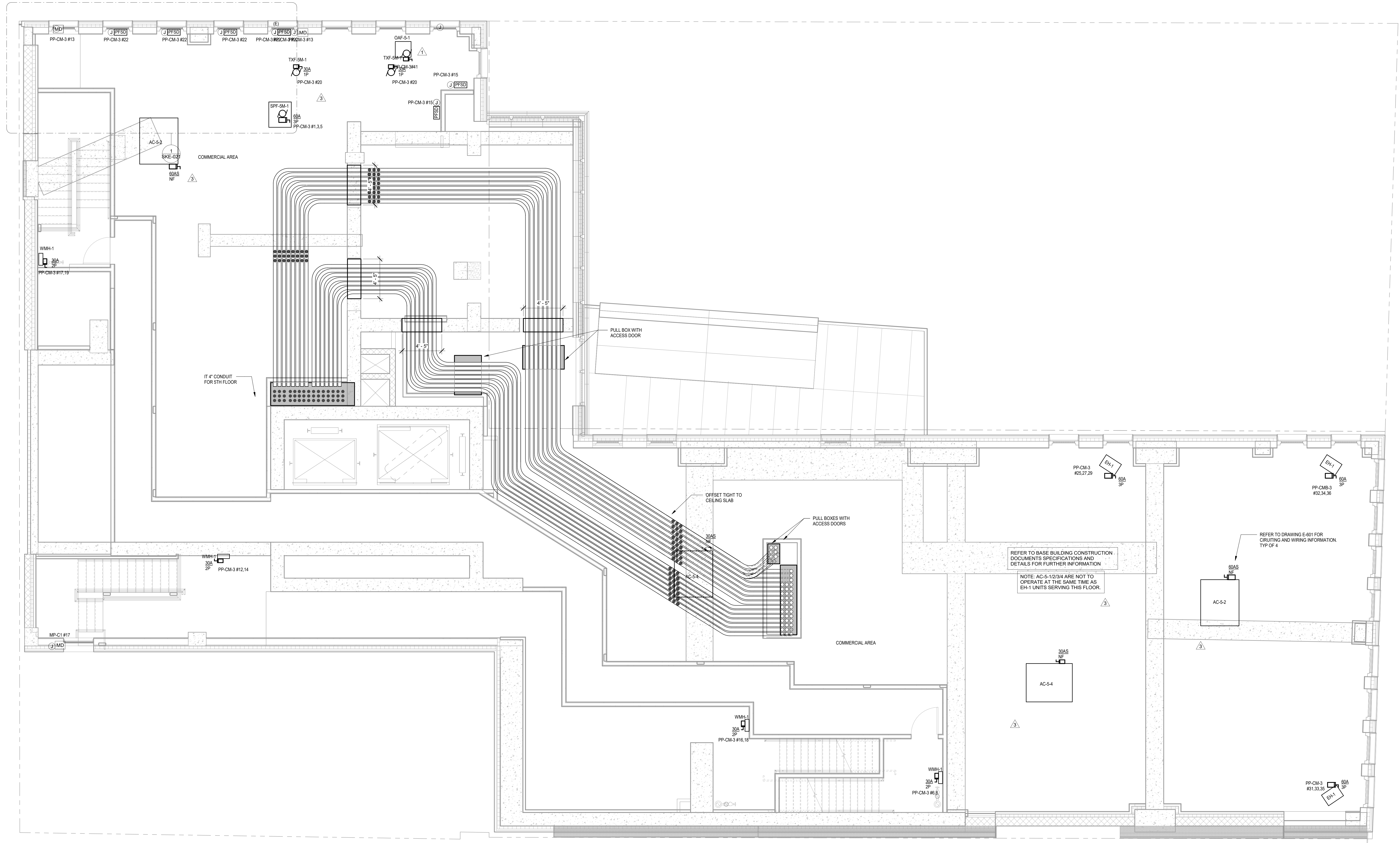
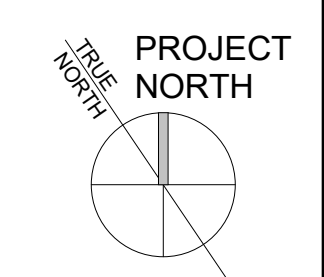
Seal: \_\_\_\_\_ Drawn: \_\_\_\_\_ Project No.: 8126.00  
 Author: \_\_\_\_\_

Drawing No.: **E-205.00**

05/22/18  
 Scale: 1/4" = 1'-0"  
 28 of 51

**NEW YORK CITY ENERGY CONSERVATION CODE**  
 TO THE BEST OF MY KNOWLEDGE, BELIEF AND PROFESSIONAL JUDGMENT, THESE PLANS AND SPECIFICATIONS ARE IN COMPLIANCE WITH THE 2016 NEW YORK CITY ENERGY CONSERVATION CODE.





NO	DATE	REVISIONS / SUBMISSIONS	Rev.
16			
15			
14			
13			
12			
11			
10			
9			
8	12.07.2021	ISSUE FOR PAA	3
7	02.12.2020	RFI-183 FSD DM E	2
6	02.12.2020	ADDENDUM #5	1
5	08.30.2019	DOB FILING SUBMISSION	
4	09.28.2019	ISSUE FOR CONSTRUCTION	
3	05.31.2019	90% CONSTRUCTION DOCUMENTS (PROGRESS SUBMISSION)	
2	01.18.2019	DESIGN DEVELOPMENT	
1	09.22.2018	Schematic Design	

**fxcollaborative**

FXCollaborative Architects LLP | 22 West 19th Street | New York, NY 10011 | 212 627 1700 | [fxcollaborative.com](http://fxcollaborative.com)  
**SEVERUD**  
 469 Seventh Avenue, Suite 900, New York, NY 10018 212-668-3700  
**MG ENGINEERING D.P.C.**  
 116 West 32nd Street, New York, NY 10001 212-643-9005  
**LANGAN**  
 21 Park Place, 300 West 31st Street, 8th Floor, New York, NY 10001 212-479-5400  
**GILSANZ MURRAY STEFICEK LLP**  
 129 West 27th Street, Floor 5, New York, NY 10001 212-254-0030  
**INC Architecture & Design**  
 150 Varot Street, Floor 5 South, New York, NY 10013 212-673-1695  
**ONELUX Studio**  
 158 West 29th Street, 10th Floor, New York, NY 10001 212-201-9790  
**RKLA Studio**  
 333 Hudson Street, Suite 1001, New York, NY 10013 212-229-2534

**185 Broadway**  
 New York, NY 10038

DRAWING TITLE:  
**5TH FLOOR MEZZANINE ELECTRICAL POWER PLAN**

Seal: \_\_\_\_\_ Drawn: \_\_\_\_\_ Project No.: 8126.00  
 Author: \_\_\_\_\_  
 Drawing No.: **E-206.00**  
 05/23/18  
 Scale: 1/4" = 1'-0"  
 29 of 51

**NEW YORK CITY ENERGY CONSERVATION CODE**  
 TO THE BEST OF MY KNOWLEDGE, BELIEF AND PROFESSIONAL JUDGMENT, THESE PLANS AND SPECIFICATIONS ARE IN COMPLIANCE WITH THE 2016 NEW YORK CITY ENERGY CONSERVATION CODE.

