

AVAILABLE FOR SALE

.768 ACRE OUTLOT AVAILABLE

2115 N. BALTIMORE STREET KIRKSVILLE, MO 63501

RETAIL



CONTACT US

Paul Fusz

First Vice President
+1 314 655 6046
paul.fusz@cbre.com

Nick Garavaglia

Senior Associate
+1 314 655 5827
nick.garavaglia@cbre.com

CBRE

190 Carondelet Plaza
+1 314 655 6000
www.cbre.com/stlouis

www.cbre.com/stlouis

CBRE

AVAILABLE FOR SALE

.768 ACRE OUTLOT AVAILABLE

2115 N. BALTIMORE STREET KIRKSVILLE, MO 63501

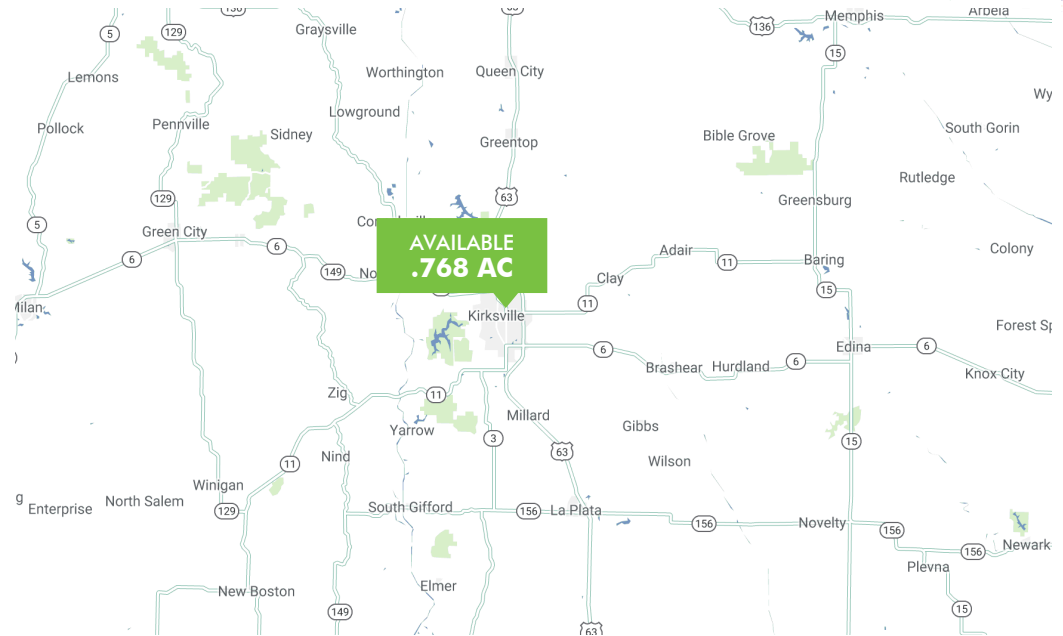
RETAIL



PROPERTY INFO

- + .768 AC outlot of ALDI grocery store
- + Located on North Baltimore or Business Highway 63 which is the primary north/south artery through Kirksville
- + Shadowed by Walmart Superstore
- + Northern Kirksville has been rapidly growing with the development of Home Depot, Wal-Mart, RSC equipment rental, American Trust Bank, Heritage House Realty, Ruby Tuesday, Maritz Company and several other locally owned businesses who have gravitated toward the northern end of Kirksville in the last 10 years.

SALE PRICE: \$100,500



AREA DEMOGRAPHICS

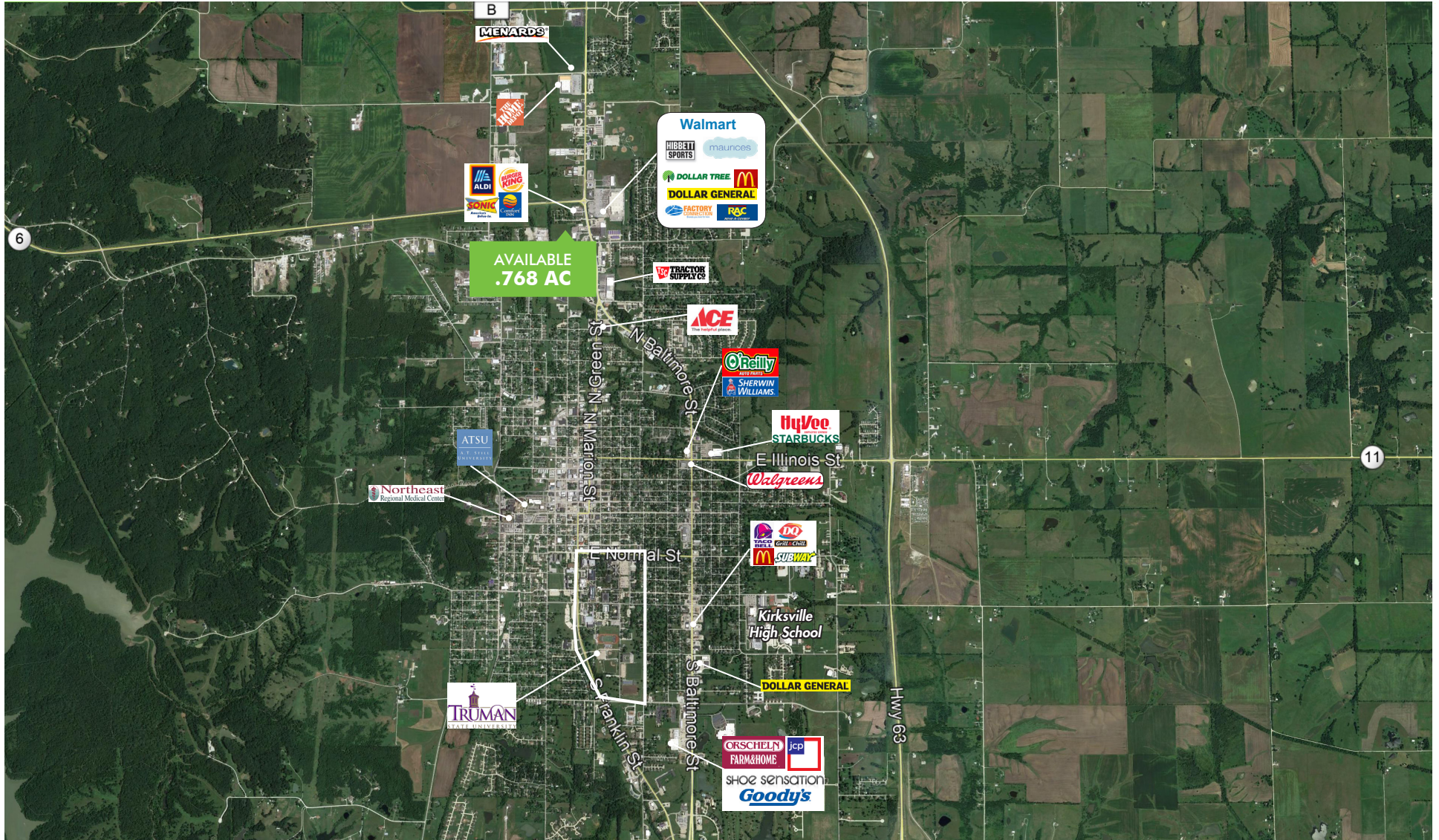
	1 MILES	3 MILES	5 MILES
Population	3,604	17,659	19,653
Median Household Income	\$36,226	\$30,401	\$31,714
Average Household Income	\$54,067	\$48,151	\$50,139
Households	1,622	6,709	7,475

AVAILABLE FOR SALE

TRADE AREA AERIAL

2115 N. BALTIMORE STREET KIRKSVILLE, MO 63501

RETAIL



© 2018 CBRE, Inc. All rights reserved. This information has been obtained from sources believed reliable, but has not been verified for accuracy or completeness. You should conduct a careful, independent investigation of the property and verify all information. Any reliance on this information is solely at your own risk. Photos herein are the property of their respective owners. Use of these images without the express written consent of the owner is prohibited. CBRE and the CBRE logo are service marks of CBRE, Inc. All other marks displayed on this document are the property of their respective owners.

CBRE