

# 1761 MCCOBA DRIVE

SMYRNA, GA  
30080

**Industrial Property For Sublease**  
**27,550+/- SF Office/Warehouse**

**CARSON HAWKS**

*Associate*

770.312.0267

chawks@kingindustrial.com

**CLYDE PURMORT**

*Advisor*

941.323.0763

cpurmort@kingindustrial.com

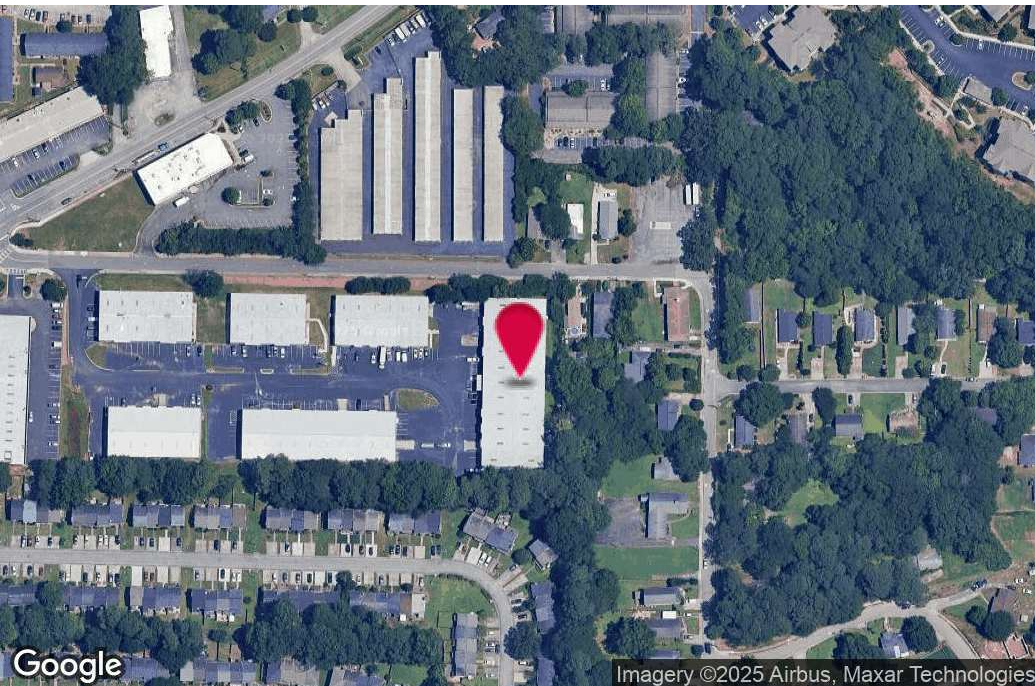


Industrial • Commercial • Investment  
404.942.2000 | [kingindustrial.com](http://kingindustrial.com)





FOR SUBLEASE  
27,550+/- SF



## PROPERTY HIGHLIGHTS

- 3,274+/- SF Office Space
- 4 Dock High Doors
- 1 Grade Level Drive-in
- 1 Ramp Drive-In
- 18' Clear Height
- Able to be Demised

## OFFERING SUMMARY

Building Size:	27,550 SF
Zoning:	OD

### CARSON HAWKS

Associate

770.312.0267

chawks@kingindustrial.com

### CLYDE PURMORT

Advisor

941.323.0763

cpurmort@kingindustrial.com

Every effort has been made to provide accurate information, but no liability is assumed for errors or omissions.



Industrial • Commercial • Investment  
404.942.2000 | kingindustrial.com



# ADDITIONAL PHOTOS



## CARSON HAWKS

Associate

770.312.0267

chawks@kingindustrial.com

## CLYDE PURMORT

Advisor

941.323.0763

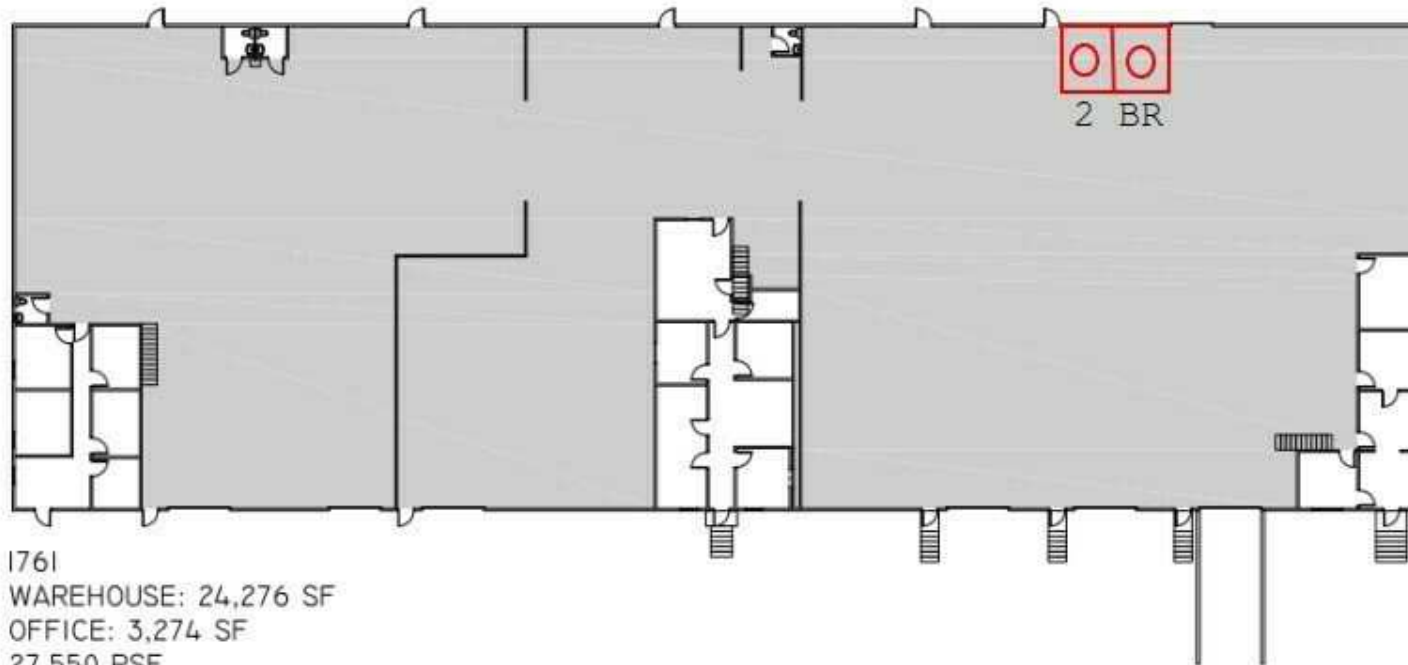
cpurmort@kingindustrial.com

*Every effort has been made to provide accurate information, but no liability is assumed for errors or omissions.*

**king** Industrial  
Realty, Inc. **CORFAC**  
INTERNATIONAL

Industrial • Commercial • Investment  
404.942.2000 | kingindustrial.com

# FLOOR PLAN



PLANNING U  
INTERIORS

SMYRNA CIRCLE • 1761 MCCOBA DR • FULL BUILDING • 27,550 RSF

06.22.2016

## CARSON HAWKS

Associate

770.312.0267

chawks@kingindustrial.com

## CLYDE PURMORT

Advisor

941.323.0763

cpurmort@kingindustrial.com

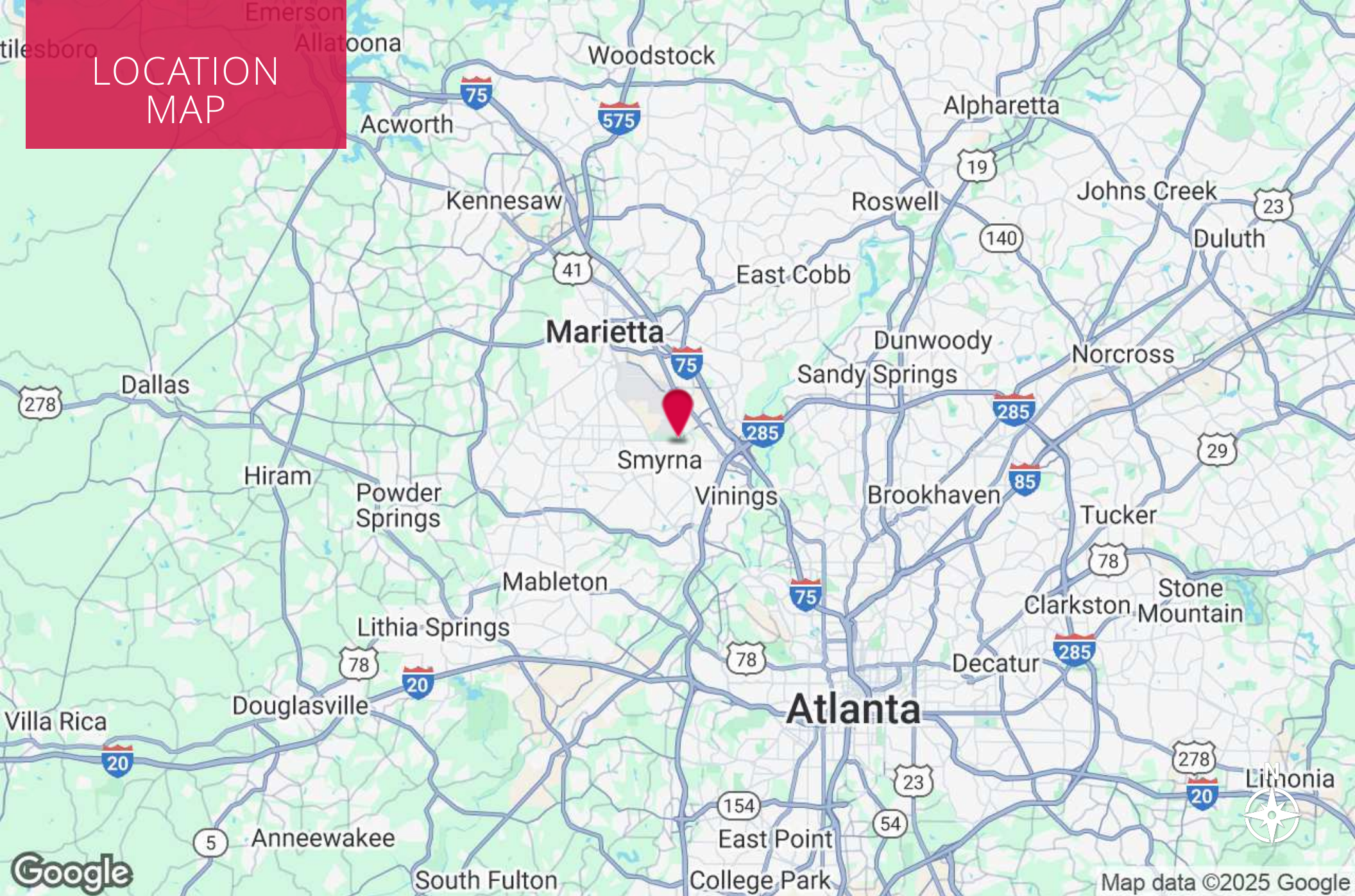
Every effort has been made to provide accurate information, but no liability is assumed for errors or omissions.



Industrial • Commercial • Investment  
404.942.2000 | kingindustrial.com



# LOCATION MAP



## CARSON HAWKS

Associate

770.312.0267

chawks@kingindustrial.com

## CLYDE PURMORT

Advisor

941.323.0763

cpurmort@kingindustrial.com

*Every effort has been made to provide accurate information, but no liability is assumed for errors or omissions.*

**king** Industrial  
Realty, Inc.

**CORFAC**  
INTERNATIONAL

Industrial • Commercial • Investment  
404.942.2000 | kingindustrial.com



EXCLUSIVELY LISTED BY:

**CARSON HAWKS**

*Associate*

[chawks@kingindustrial.com](mailto:chawks@kingindustrial.com)

770.312.0267

**CLYDE PURMORT**

*Advisor*

[cpurmort@kingindustrial.com](mailto:cpurmort@kingindustrial.com)

941.323.0763

**King** Industrial  
Realty, Inc.

Industrial • Commercial • Investment  
404.942.2000 | [kingindustrial.com](http://kingindustrial.com)