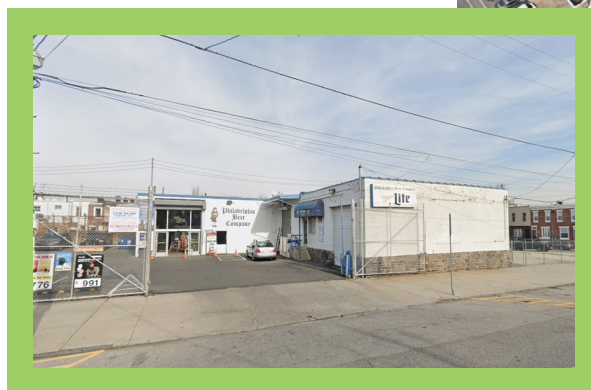


MULTIPLE RETAIL OPTIONS AVAILABLE FOR LEASE

2525 E. YORK ST. Fishtown, Philadelphia, PA 19125



- » 11,000 +/- SF up to 60,000 +/- SF with parking
- » Frontage on E York Street, Almond Street & E Boston Street
- » Zoning: CMX-2
- » Conveniently located just off Girard exit on Interstate-95 with easy access to Center City, and public transportation
- » Located in Fishtown, one of Philadelphia's most exciting neighborhoods that features some of the city's best restaurants, bars, music venues and artist's studios/galleries.



DEMOGRAPHICS	
Residents within 1 mile	52,949
Average household income	\$87,110
Est. daytime population	12,179

Walk Score

Walk Score **92** Bike Score **91**

Walker's Paradise Biker's Paradise

NEIGHBORS INCLUDE:

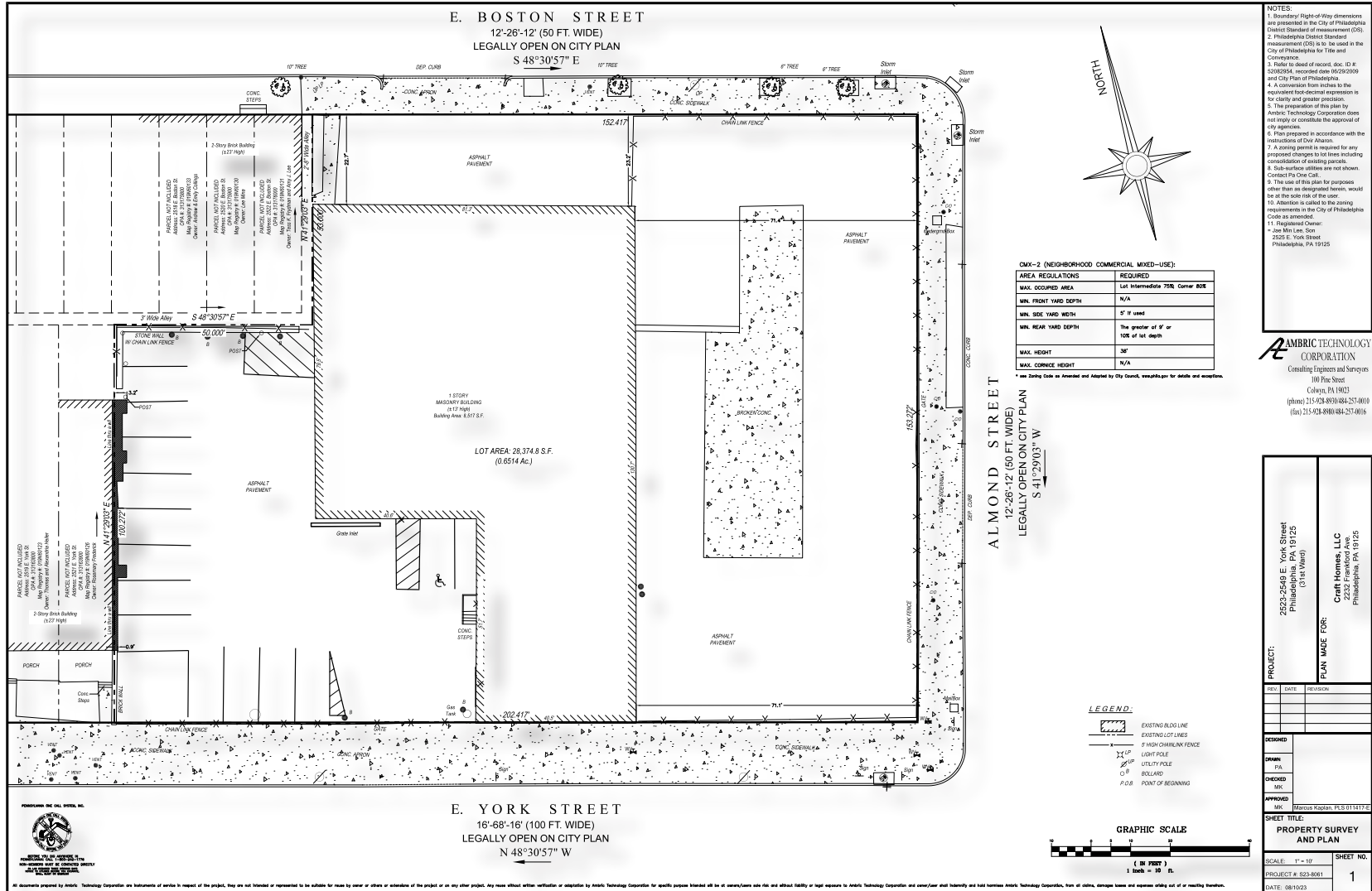
VERONICA BLUM 215.238.1728 ■ vblum@mpnrealty.com

Information concerning this offer is from sources deemed reliable and no warranty is made as to the accuracy thereof. The offering is submitted subject to errors, omissions, change in price, or other conditions, prior sale or Lease, or withdrawal without notice. The prospective tenant should carefully verify to his/her own satisfaction all information contained herein.

2525 E. YORK ST. Fishtown, Philadelphia, PA 19125



Floor Plan



VERONICA BLUM 215.238.1728 ■ vblum@mpnrealty.com

Information concerning this offer is from sources deemed reliable and no warranty is made as to the accuracy thereof. The offering is submitted subject to errors, omissions, change in price, or other conditions, prior sale or Lease, or withdrawal without notice. The prospective tenant should carefully verify to his/her own satisfaction all information contained herein.

2525 E. YORK ST. Fishtown, Philadelphia, PA 19125

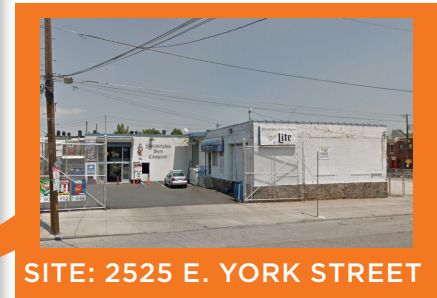
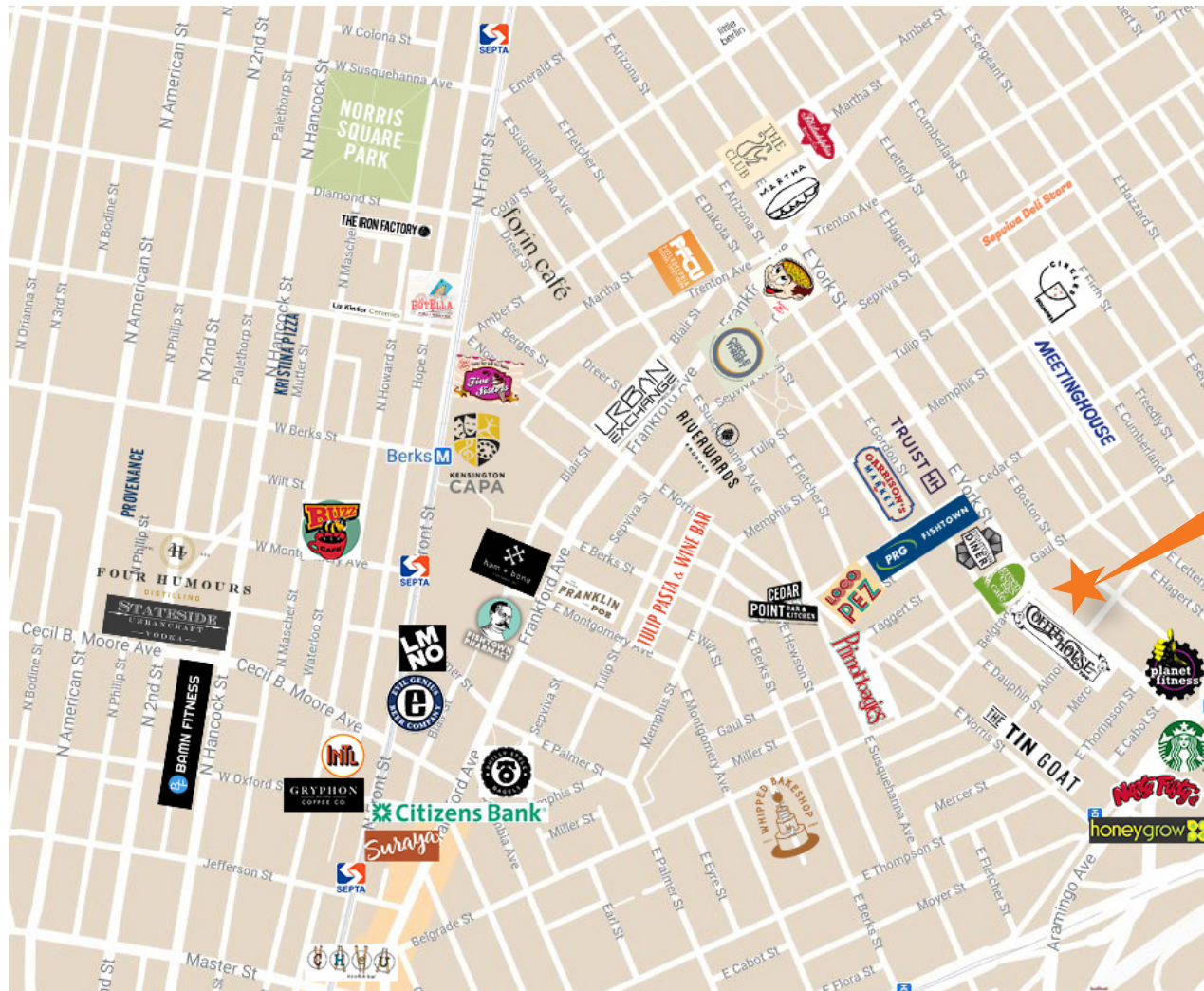
Aerial View



VERONICA BLUM 215.238.1728 ■ vblum@mpnrealty.com

2525 E. YORK ST. Fishtown, Philadelphia, PA 19125

Retail Map



SITE: 2525 E. YORK STREET

VERONICA BLUM 215.238.1728 ■ vblum@mpnrealty.com