

PA ONE CALL NOTE:
 ALL LOCATIONS OF EXISTING UTILITIES SHOWN ON THIS PLAN HAVE BEEN DEVELOPED FROM EXISTING UTILITY RECORDS AND OR ABOVE GROUND EXAMINATION OF THE SITE. COMPLETENESS OR ACCURACY OF LOCATION AND DEPTH OF UNDERGROUND UTILITIES OR STRUCTURES CANNOT BE GUARANTEED. CONTRACTOR MUST VERIFY LOCATION AND DEPTH OF ALL UNDERGROUND UTILITIES AND FACILITIES BEFORE START OF WORK IN ACCORDANCE WITH ACT 287, AS AMENDED.

PA ONE CALL SYSTEM, INC.
 1-800-242-1776
 SITE NUMBER: 20201754186

TEMPORARY STABILIZATION & PERMANENT STABILIZATION
 1. HAY OR STRAW MULCH MUST BE APPLIED AT 3.0 TONS PER ACRE.
 2. MULCH WITH MULCH CONTROL NETTING OR EROSION CONTROL BLANKETS MUST BE INSTALLED ON ALL SLOPES 3:1 OR STEEPER.
 3. STRAW MULCH SHALL BE APPLIED IN LONG STRANDS, NOT CHOPPED OR FINELY BROKEN.
 4. DIVERSION CHANNELS, SEDIMENTATION BASINS, SEDIMENT TRAPS, AND STOCKPILES MUST BE STABILIZED IMMEDIATELY.
 5. UNTIL THE SITE IS STABILIZED, ALL EROSION AND SEDIMENT BMP'S MUST BE MAINTAINED PROPERLY. MAINTENANCE MUST INCLUDE INSPECTIONS OF ALL EROSION AND SEDIMENT CONTROL BMP'S AFTER EACH RAINFALL EVENT AND ON A WEEKLY BASIS. ALL PREVENTATIVE AND REMEDIAL MAINTENANCE WORK, INCLUDING CLEAN OUT, REPAIR, REPLACEMENT, REGARDING, RESEEDING, REMULCHING, AND RENEWING, MUST BE DONE IMMEDIATELY IF EROSION AND SEDIMENT CONTROL BMP'S FAIL TO PERFORM AS EXPECTED, REPLACEMENT BMP'S OR MODIFICATIONS TO THOSE INSTALLED WILL BE REQUIRED. EASPCPM P. 168
 6. SEDIMENT REMOVED FROM BMP'S SHALL BE DISPOSED OF IN LANDSCAPE AREAS OUTSIDE OF STEEP SLOPES, WETLANDS, FLOODPLAINS OR DRAINAGE SWALES AND IMMEDIATELY STABILIZED, OR PLACED IN TOPSOIL STOCKPILES.
 7. THE OPERATOR SHALL REMOVE FROM THIS SITE, RECYCLE, OR DISPOSE OF ALL BUILDING MATERIALS AND WASTES IN ACCORDANCE WITH THE DEPARTMENT'S SOLID WASTE MANAGEMENT REGULATIONS AT 25 PA. CODE BURY, DUMP, OR DISCHARGE ANY BUILDING MATERIAL OR WASTES AT THIS SITE.
 8. AN AREA SHALL BE CONSIDERED TO HAVE ACHIEVED FINAL STABILIZATION WHEN IT HAS A MINIMUM OF 70% UNIFORM PERENNIAL VEGETATIVE COVER OR OTHER PERMANENT NON-VEGETATIVE COVER WITH A DENSITY SUFFICIENT TO RESIST ACCELERATED SURFACE EROSION AND SUBSURFACE CHARACTERISTICS SUFFICIENT TO RESIST SLIDING OR OTHER MOVEMENTS.

TRENCH EXCAVATION
 1. LIMIT ADVANCED CLEARING AND GRUBBING OPERATIONS TO A DISTANCE EQUAL TO THE LENGTH OF PIPE INSTALLATION THAT CAN BE COMPLETED IN ONE DAY.
 2. WORK CREWS AND EQUIPMENT FOR TRENCHING, PLACEMENT AND SITE RESTORATION AND BACKFILLING WILL BE SELF CONTAINED AND SEPARATE FROM CLEARING AND GRUBBING AND SITE RESTORATION AND STABILIZATION OPERATIONS.
 3. ALL SOIL EXCAVATED FROM THE TRENCH WILL BE PLACED ON THE UPHILL SIDE OF THE TRENCH.
 4. LIMIT DAILY TRENCH EXCAVATION TO THE LENGTH OF PIPE PLACEMENT, PLUG INSTALLATION AND BACKFILLING THAT CAN BE COMPLETED THE SAME DAY.
 5. WATER WHICH ACCUMULATES IN THE OPEN TRENCH WILL BE COMPLETELY REMOVED BY PUMPING BEFORE PIPE PLACEMENT AND BACKFILLING BEGINS. WATER REMOVED FROM THE TRENCH SHALL BE PUMPED THROUGH A FILTRATION DEVICE.
 6. ON THE SAME DAY THE DISTURBED AREA WILL BE BACKFILLED TAKES PLACE. THE DISTURBED AREA WILL BE GRADED TO FINAL CONTOURS AND IMMEDIATELY STABILIZED.

GENERAL SEEDING NOTES
PERMANENT SEEDING :
 1. DISTURBED AREAS WHICH ARE EITHER AT FINISHED GRADE OR WILL NOT BE DISTURBED AGAIN WITHIN ONE (1) YEAR MUST BE SEED WITH A PERMANENT SEED MIXTURE AND MULCHED.
 2. SEEDING SHALL BE DONE DURING PERIODS FROM APRIL 15TH TO OCTOBER 1ST, UNLESS OTHERWISE DIRECTED. IF SEEDING IS DONE AFTER OCTOBER 1ST, DORMANT SEED MUST BE USED AND DISTURBED AREAS MUST BE MULCHED.
 3. DISTURBED FINISHED GRADED AREAS AND DRAINAGE SWALES WILL BE PERMANENTLY SEEDED AS FOLLOWS:
 A. MINIMUM OF 6" OF TOPSOIL SHALL BE SPREAD OVER ALL AREAS TO BE SEED. TOPSOIL SHALL BE FREE OF STONES, STICKS, WASTE MATERIAL AND SIMILAR DEBRIS. FROZEN GROUND SHALL NOT BE SPREAD AS TOPSOIL AND SHALL NOT BE SPREAD OVER FROZEN GROUND.
 B. A SOIL ANALYSIS IS RECOMMENDED, HOWEVER, IN LIEU OF AN ANALYSIS APPLY AGRICULTURAL LIMESTONE AND FERTILIZER AT RATES RECOMMENDED BELOW (OR AS SUGGESTED BY THE SOIL TEST RESULTS (ONE (1) TEST PER 25 ACRES)).
 C. THE LIMESTONE AND FERTILIZER SHALL BE WORKED INTO THE SOIL TO DEPTHS OF 3 TO 4 INCHES.
 D. GRASS SHALL NOT BE PLANTED AFTER HEAVY RAIN OR WATERING.
 E. ALL SEED USED SHALL BE LABELED IN ACCORDANCE WITH THE U.S. DEPARTMENT OF AGRICULTURE RULES AND REGULATIONS UNDER THE FEDERAL SEED ACT IN EFFECT AT THE TIME OF PURCHASE. INERT MATTER SHALL NOT EXCEED 15% AND BLUE TAG CERTIFIED SEED SHALL BE SUPPLIED WHEREVER POSSIBLE.
 F. SMOOTH AND FIRM SEED BED WITH CULTIPACKER OR SIMILAR EQUIPMENT PRIOR TO SEEDING. APPLY SEED UNIFORMLY BY BROADCASTING, DRILLING OR HYDRO SEEDING. COVER SEEDS WITH 1/2" OF SOIL WITH SUITABLE EQUIPMENT.
 G. APPLY HAY OR STRAW MULCH (PER PENN DOT PUBLICATION 408, SECTION 805.2) AT A RATE OF THREE (3) TONS PER ACRE.

PERMANENT SEEDING FOR NORMAL MOWED LAWN AREAS

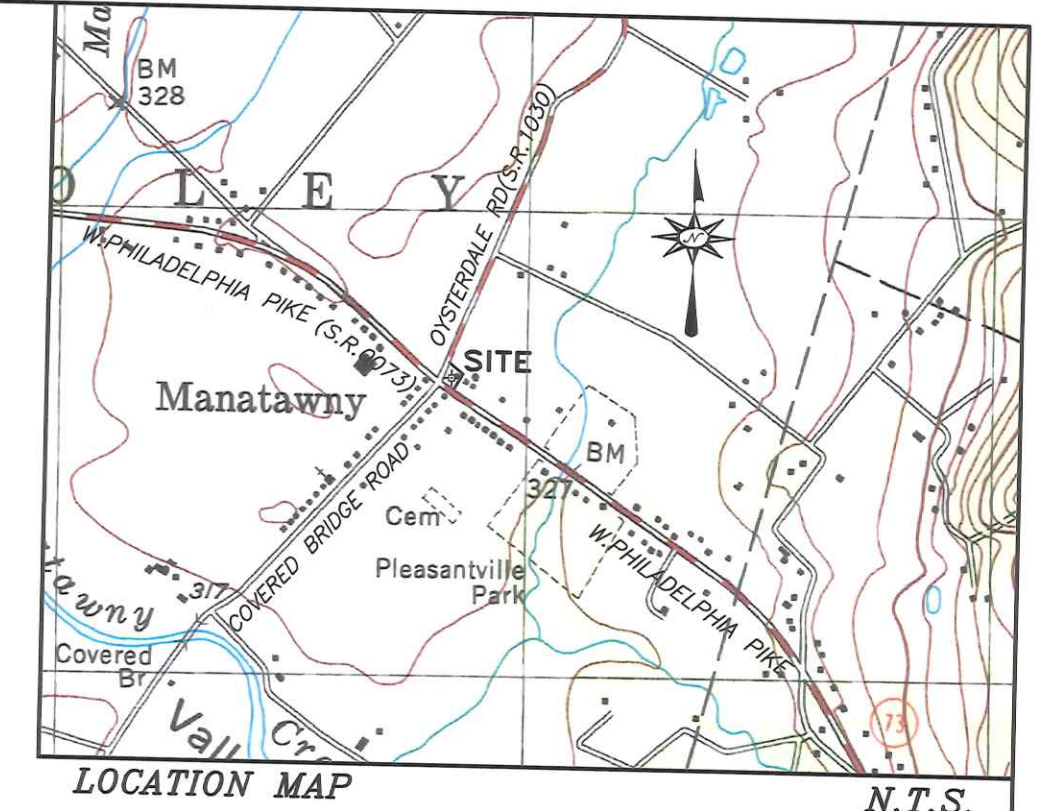
SEASON	RATE	TYPE
MARCH 1 TO JUNE 1 & AUG 15 TO OCT 1	2 LBS./1000 SF	KY31 TALL FESCUE AND RED TOP 12%
OCT 1 TO MARCH 1 & JUNE 1 TO AUG 1	2 LBS./1000 SF	RED TOP*

(* USE DORMANT SEED, UNIFORMLY APPLIED, WORKING INTO A DEPTH OF 1/4 INCH. THE USE OF MULCH IS REQUIRED. THE USE OF NETTING OR EROSION CONTROL MATS MAY BE REQUIRED.)

PERMANENT SEEDING FOR SPECIAL AREAS (SWALES, POND EMBANKMENTS, LEVEES, DIVERSION CHANNELS, ETC)

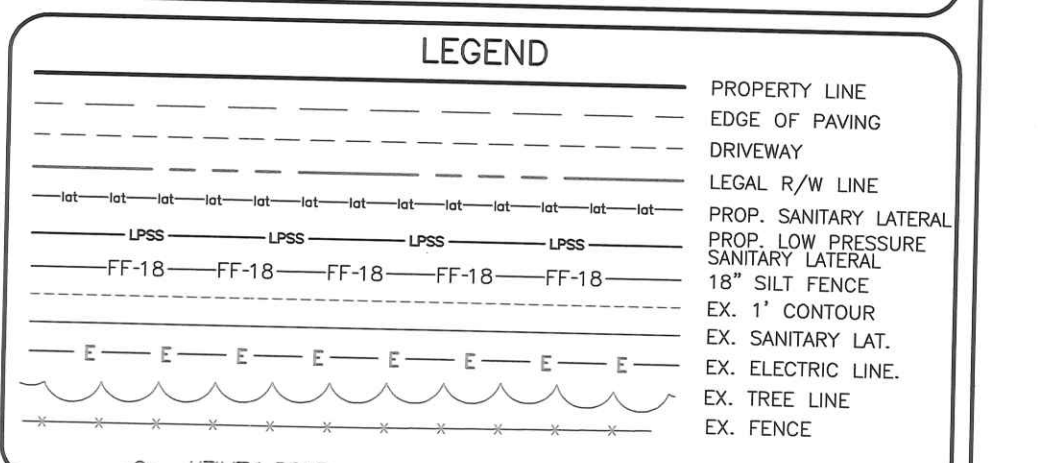
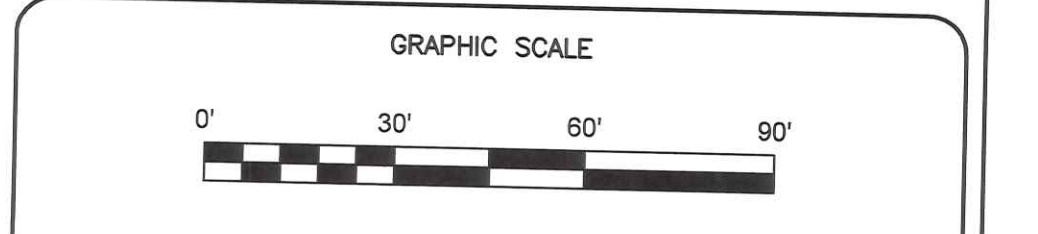
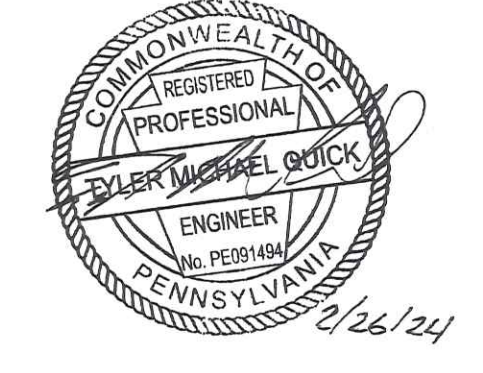
SEASON	RATE	TYPE
MARCH 1 TO JUNE 1 & AUG 15 TO OCT 1	2.5 LBS./1000 SF	KY31 TALL FESCUE 80% AND RYEGRASS

NOTE :
 SEEDING PERIODS AND SPECIFICATIONS MAY VARY DUE TO SITE CONDITIONS AND VARIANCES FROM THE TIME THIS REPORT IS WRITTEN AND APPROVED. IT MAY BE NECESSARY TO ADAPT SEED SPECIFICATION, VARIETIES, AND QUALITIES, FOR SPECIAL CONDITIONS CONSULT "GUIDELINE FOR RECLAMATION OF SEVERELY DISTURBED AREAS", PENNSYLVANIA STATE UNIVERSITY.
 4. FERTILIZER - A SOIL ANALYSIS IS RECOMMENDED BUT IN LIEU OF AN ANALYSIS APPLY AGRICULTURAL LIMESTONE AT A RATE OF FOUR (4) TONS/ACRE AND 10-20-20 FERTILIZER AT A RATE OF 21 POUNDS PER 1000 SF. THESE MATERIALS WILL BE UNIFORMLY APPLIED AND WORKED INTO THE TOPSOIL TO A DEPTH OF 3 TO 4 INCHES. IMMEDIATELY BEFORE SEEDING, A 10-10-10 FERTILIZER WILL BE WORKED INTO THE SURFACE AT A RATE OF 10 LBS. PER 1000 SF.
 5. HYDRO SEEDING - LIME AND SEED SHALL BE AS SPECIFIED ABOVE, AND FERTILIZER SHALL BE APPLIED AT A RATE OF 50 POUNDS PER ACRE. CROWN VETCH SHALL BE INOCULATED AT 4 TIMES THE MANUFACTURER'S RATES. SHOULD FERTILIZER BE APPLIED WITH THE INOCULANT, THE FIBER, APPLIED AT A RATE OF 35 LBS. PER 1000 SF, MAY BE APPLIED AS PART OF THE SLURRY IN LIEU OF MULCHING. SYNTHETIC MULCH BINDER, SUCH AS CURASOL, DCA-70, TERRE-TACK OR AN APPROVED EQUAL SHALL BE USED PER THE MANUFACTURER'S INSTRUCTIONS TO ANCHOR THE MULCH.



TAX PARCEL #67-5368-01-19-9262
DBV AND PAGE-1683-661
GROSS AREA = 23,338 SQ. FT. (0.54 AC)
NET AREA = 16,256 SQ. FT. (.37 AC)

BOUNDARY SURVEY
 THE BOUNDARY SURVEY SHOWN HEREON TAKEN FROM BOUNDARY SURVEY BY ACA JULY 2020.
TOPOGRAPHY SURVEY
 THE TOPOGRAPHY SHOWN HEREON TAKEN FROM FIELD SURVEY BY ACA, JULY 2020.
SOILS DATA
 DBA - DUFFIELD SILT LOAM, 0-3 PERCENT SLOPES
WETLANDS
 THERE ARE NO WETLANDS PRESENT ON THE PROPERTY.
FLOODPLAIN
 PER FEMA FIRM #4201C0413G, EFF. 07/03/2012, THERE ARE NO FLOODPLAINS IN THE AREA OF THE PROPOSED SMALL FLOW TREATMENT FACILITY



DATE	REVISIONS	BY
09/18/2023	REVISED PER DEP REVIEW	WFS

OWNER & CLIENT
STELLAR HOMES LLC
 C/o: BURT SALVO
 P.O. BOX 553
 OLEY, PA 19547
 PH. 215-783-6721

PROJECT
SAVORY - 2693 WEST PHILADELPHIA
 2693 WEST PHILADELPHIA PIKE, OLEY 19547
 OLEY TOWNSHIP BERKS COUNTY PENNSYLVANIA

ALL COUNTY AND ASSOCIATES, INC.
 SURVEYING | ENGINEERING | ENVIRONMENTAL
 P.O. BOX 472 | 1841 POTTSTOWN PIKE, ST. PETERS, PA 19470
 PHONE: 610-469-3830 | FAX: 610-469-6385
 E-MAIL: INFO@ALL-COUNTY-ASSOC.COM

FIELD PERSONNEL	SHEET TITLE
RPB3, KAR	SMALL FLOW TREATMENT FACILITY PLAN

DESIGNED BY	DRAWN BY	CHECKED BY	PROJECT NO.	DATE
WFS	WFS	SAVOBE-0003	06/10/2022	

PLAN SCALE	CAO FILE	SHEET NO.
1" = 30'	2022-06-10 - Savory-2693 Philadelphia - SFTF.DWG	1 OF 2

Advantex Treatment Systems
AX100
 Manufactured by Orenco Systems, Inc.

Decentralized Wastewater Treatment for Commercial Properties and Communities

- Municipal systems
- Subdivisions, apartments
- Golf course developments, resorts
- Manufactured home parks
- Parks, RV parks, campgrounds
- Schools, churches, businesses
- Festivals, truck stops

814 Arroyo Avenue, Seaside, Oregon, USA 97137 • Tel: 503-348-9842 • +1 541-459-4449 • www.orenco.com

Advantex AX100 Treatment System

The Product
 Orenco's patented AdvanTex Treatment System can make raw wastewater up to 90% clearer, meeting stringent regulatory requirements. They can also reduce nitrogen significantly, depending on influent and configuration. Orenco's commercial-sized AX100 AdvanTex Systems offer all the benefits of Orenco's residential line.

- Consistent, reliable treatment, even under peak flows
- Compact package, small footprint for small sites
- Pre-manufactured package, including treatment media, for quality control
- Low maintenance requirements, low power use (<2 kWh per 1000 treated gallons)
- Low life-cycle costs
- Production of clear effluent that's ideal for reuse

Advantex Treatment Systems for supplemental BOD and ammonia reduction are also available. (orenco.com/products/treatment-systems)

Decades of Research, Thousands of Installations
 Orenco's AdvanTex recirculating filter unit is configured like a recirculating sand filter — a patented bed filter technology that Orenco engineers have helped to perfect since the 1970s. Like recirculating sand filters, AdvanTex is reliable and low-maintenance. Its superior to other bed filter filters, however, in its size and longevity.

It's also superior in its treatment media. AdvanTex uses a highly efficient, lightweight textile that has a large surface area, lots of void space, and a high degree of water-holding capacity. Consequently, AdvanTex Treatment Systems can provide treatment equivalent to that of sand filters at loading rates as high as 25-50 gpd/ft² (1000-2000 L/dm²). That means AdvanTex can treat high-volume commercial and multi-family flows in a very compact space.

Our textile-based, multi-pass treatment technology has undergone third-party testing and evaluation to ANSI Standards. About 37,500 AdvanTex Treatment Systems have been installed throughout the world. And about 3,400 commercial-sized AX100 units are now in operation, including the installations described on the back page.

The Program
 It takes more than a good product to solve on-site wastewater problems. It takes a comprehensive program — one that ensures a successful project every time and provides support for the life of the system. That's what Orenco Systems has done. We've engineered a program, not just a product.

Orenco's commercial AdvanTex program includes:

- A network of Dealers, trained installers and Operators
- Training and plan reviews for Dealers
- A comprehensive project checklist for successful system design, installation, start-up, and follow-up
- Round-the-clock system supervision via Orenco's remote telemetry controls
- Web-based retrieval of site and performance data on Dealer website
- Ongoing manufacturer support through Orenco's Sales/Engineering Department
- Asset Management advice from dedicated post-sales Account Managers
- 3-year manufacturer's warranty

Sample System Layout:
 Tanks are buried. AX100 filter pods can be installed aboveground or partially buried, depending on site conditions.

Telemetry Controls
 Orenco's telemetry-enabled control panels use a standard phone line, internet connection, or cellular data connectivity for remote video camera supervision and real-time remote control.

VeriComm® AXB Control Panels

Technical Data Sheet

For AdvanTex® Treatment Systems

Applications
VeriComm® AXB1 and AXB2 remote telemetry control panels are used with two-pump operations — recirculation and discharge (on-demand or timed) — for AdvanTex® Treatment Systems. Interlocked controls prevent the recirculation pump from running if there is a high level alarm on the discharge side. Coupled with the VeriComm Web-based Monitoring System, these affordable control panels give water/wastewater system operators and maintenance organizations the ability to monitor and control each individual system's operation remotely, with real-time efficiency, while remaining invisible to the homeowner. VeriComm AXB panels allow remote operators to change system parameters, including timer settings, from the Web interface.



To Specify...
To specify this panel for your installation, require the following:
Basic Control Logic: Three Operating Modes
• A "Start-up Mode" for the initial 30 days, during which the system collects trend data to establish operating standards for future reference.
• A "Normal Mode" that manages day-to-day functions.
• A "Test Mode" that suspends data collection and alarm reporting during installation and service.

Data Collection and Utilization

• Data logs of system conditions and events, such as pump run times, pump cycles, and alarm conditions.

Troubleshooting and Diagnostic Logic

• Troubleshooting capabilities that can report suspected failed components, which then trigger Alarms.

Advanced Control Logic

• Advanced control logic that activates during flow malfunctions to diagnose the situation and keep the system operating normally until servicing.

Communication and Alarm Management

• Remote telemetry capabilities coupled with a Web-based monitoring application (see VeriComm Monitoring System: ATD-WEB-VCOM-1) for communication and alarm management. Updating of point values (including timer settings) and receipt of queued changes during each communication session with host. Communication sessions that occur monthly at a minimum, and more frequently during alarm conditions.

• Multiple methods of communication, as follows:

• **Call-In to VeriComm® Host**
– Automatic notification to host of "Alarms," which signal fault conditions that need to be addressed immediately (e.g., pump failure).

• **Automatic notification to host of "Alerts,"** which signal less critical fault conditions and which trigger the panels' troubleshooting logic and alternative operating mode (e.g., stuck float switch).

• **Automatic notification to host of "Updates,"** which include alarm updates or all-clear notifications following Alarm/Alerts, as well as normally scheduled monthly panel reports.

• **Manual, forced communication from panel to host to effect an updating of point values and receipt of queued changes.**

Real-Time Direct Connection to Panel

• **Manual, direct connection at the site via RS-232C serial port,** to allow a local operator real-time access to detailed logged data and the ability to change point values from a laptop.

• **Manual, forced communication by local operator/homeowner at the site to initiate an auto-answer mode,** allowing a remote operator real-time access to detailed logged data and the ability to change point values.

• **During real-time, manual connections, software with open architecture (and password security) is used;** no proprietary software is required. VT100 protocol allows access and control from any computer modem (Mac or PC) with a simple communication program (e.g., "Windows" HyperTerminal); multilevel password protection in panel ensures that only qualified personnel can access the panel's data.

Additional Features

• Status light indicators on the board, including:
– Flashing green LED for normal operation
– Yellow LEDs for status of digital inputs
– Red LEDs for status of digital outputs and modem activity

• UL-recognized and FCC-approved

For more information, try our online demo at www.vericomm.net (no password required).

ATD-CP-VCOM-1 Rev. 12.0 1/08 Page 1 of 2

VeriComm® AXB Control Panels

Technical Data Sheet

Standard Components

Feature	Specifications
1. VeriComm® Remote Telemetry Unit*	ATRIU-100: 38/18 VAC (center tap transformer); 8 digital inputs, 4 analog inputs, 4 digital outputs; 3 analog outputs, on-board modem (2400 baud); LED input and output indicators, 1-year battery backup of data and program settings.
2. Motor-Start Contactors	120 VAC, 16 FLA, 1 hp, 60 Hz; 2.5 million cycles at FLA (10 million at 50% of FLA); 240 VAC, 16 FLA, 3 hp, 60 Hz; 2.5 million cycles at FLA (10 million at 50% of FLA).
3. Toggle Switches	Single-pole switch, automatic On, with spring-loaded, momentary, manual On; 20 A, 1 hp.
4. Control Circuit Breaker	10 A, OFF/ON switch, single-pole 120 VAC, double-pole 240 VAC, DIN rail mounting with thermal magnetic tripping characteristics.
5. Pump Circuit Breakers	20 A, OFF/ON switch, single-pole 120 VAC, double-pole 240 VAC, DIN rail mounting with thermal magnetic tripping characteristics.
6. Fuses	120 VAC Primary, 36 VCT @ 0.88 A Secondary.
7. Transformer	250 VAC, 1 A.
8. Audio Alarm	85 dB at 34 in. (810 mm), warble-tone sound.
9. Visual Alarm	7/8 in. (22 mm) diameter red lens, "Push-to-silence," NEMA 4, 1 W bulb, 120 VAC, Measures 15.5 in. high x 13.3 in. wide x 8.7 in. deep (394 mm x 338 mm x 170 mm), NEMA 4X rated. Constructed of UV-resistant fiberglass; hinges and latch are stainless steel. Conduit couplings provided.
10. Panel Enclosure	Measure: 15.5 in. high x 13.3 in. wide x 8.7 in. deep (394 mm x 338 mm x 170 mm), NEMA 4X rated. Constructed of UV-resistant fiberglass; hinges and latch are stainless steel. Conduit couplings provided.

Optional Components

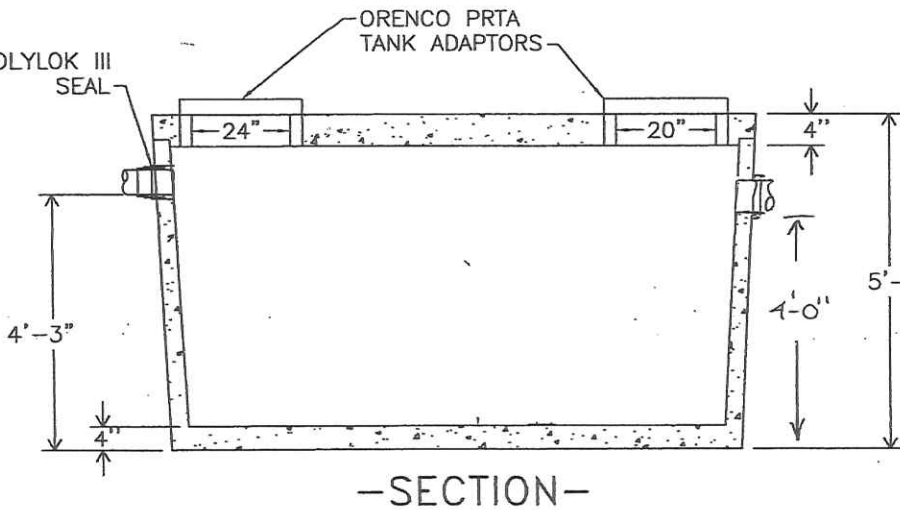
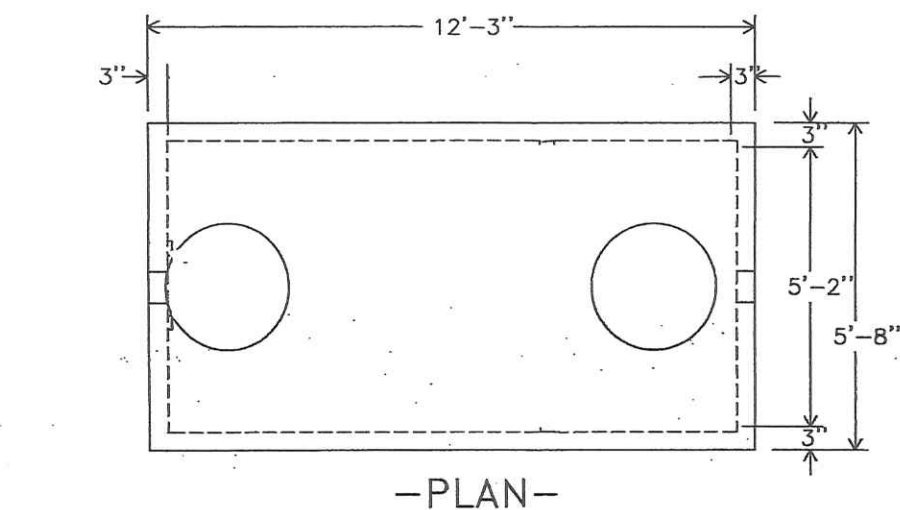
Feature	Specifications	Product Code Adder
Pump Run Light	7/8 in. (22 mm) diameter green lens, NEMA 4, 1 W bulb, 120 VAC.	PRL
Anticoagulation Heater	Self-adjusting, radiates additional warmth as temperature drops.	HT
Programmable Timer	Discharge side timed dosing.	PT
UV Disinfection Compatibility	UV grounded power circuit and alarm contacts. Pump disable upon UV failure.	UV

* See VeriComm® Remote Telemetry Unit (ATD-CP-VCOM-1) and VeriComm® Monitoring System (ATD-WEB-VCOM-1) for more detail.

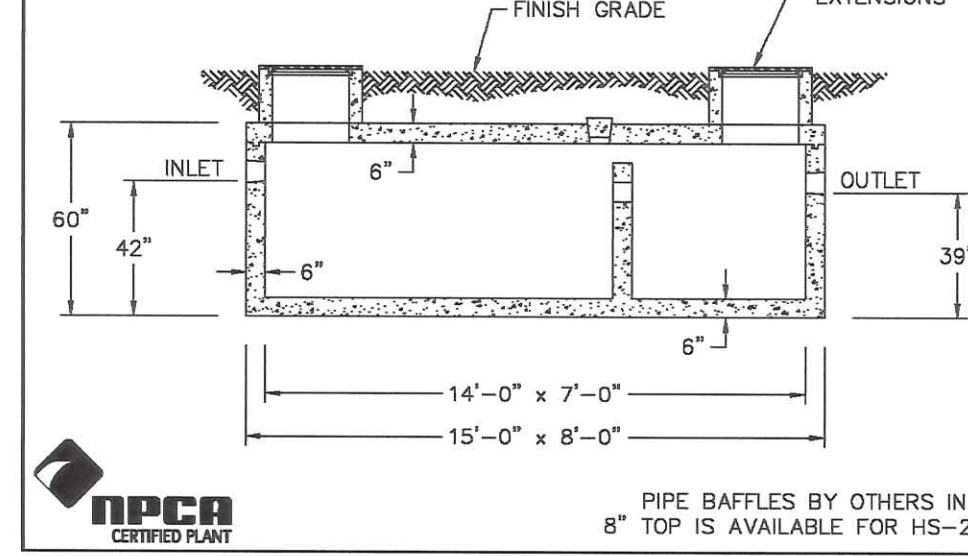
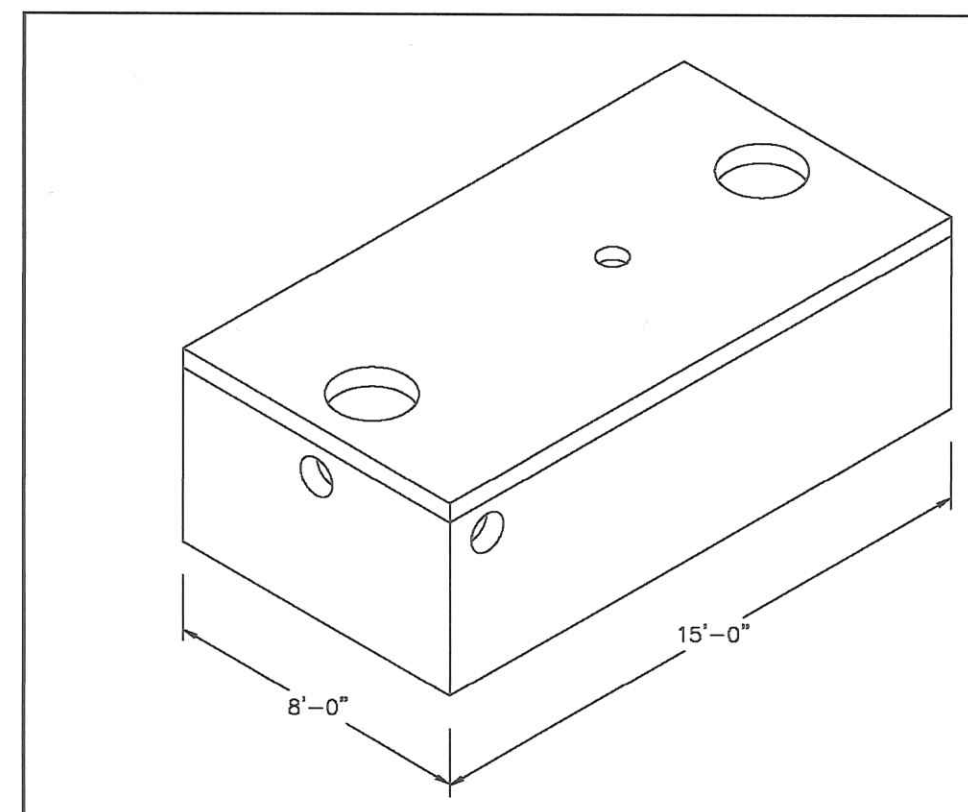
ATD-CP-VCOM-1 Rev. 12.0 1/08 Page 2 of 2

MONARCH PRODUCTS COMPANY, INC.

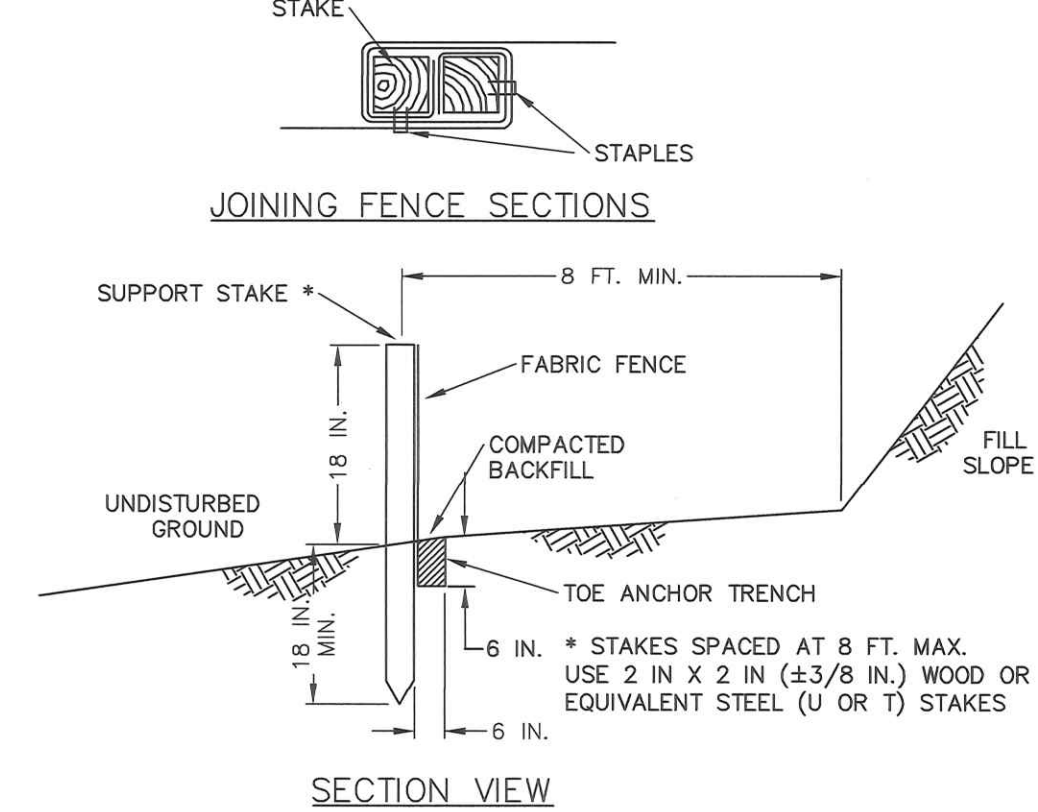
YORK HAVEN, PA.



PRECAST 1 COMPARTMENT TREATMENT TANK
1500 GALLON CAPACITY ADVAN TEX
DWG. ST-15-2AT



MONARCH PRECAST CONCRETE
425 NORTH DAUPHIN STREET ALLENTOWN, PA, 18109 PHONE (610) 435-4746
WWW.MONARCHPRECAST.COM FAX (610) 437-7133
2000 GAL. TWO COMPARTMENT SEPTIC TANK



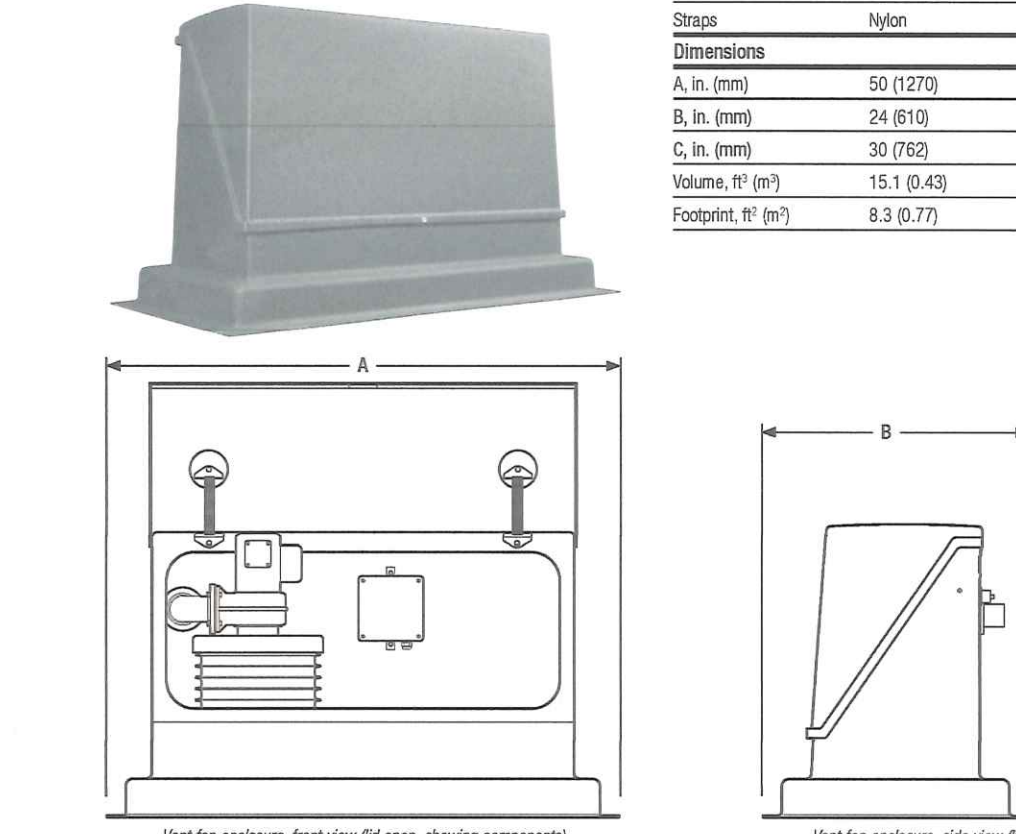
**STANDARD CONSTRUCTION DETAIL #4-7
STANDARD SILT FENCE (18" HIGH)**
NOT TO SCALE

NOTES:
FABRIC SHALL HAVE THE MINIMUM PROPERTIES AS SHOWN IN TABLE 4.3 OF THE PA DEP EROSION CONTROL MANUAL.
FABRIC WIDTH SHALL BE 30 IN. MINIMUM. STAKES SHALL BE HARDWOOD OR EQUIVALENT STEEL (U OR T) STAKES.
SILT FENCE SHALL BE PLACED AT LEVEL EXISTING GRADE, BOTH ENDS OF THE FENCE SHALL BE EXTENDED AT LEAST 8 FEET UP SLOPE AT 45 DEGREES TO THE MAIN FENCE ALIGNMENT.
SEDIMENT SHALL BE REMOVED WHEN ACCUMULATIONS REACH HALF THE ABOVE GROUND HEIGHT OF THE FENCE.
ANY SECTION OF SILT FENCE WHICH HAS BEEN UNDERMINED OR TOPPED SHALL BE IMMEDIATELY REPLACED WITH A ROCK FILTER OUTLET (STANDARD CONSTRUCTION DETAIL # 4-6).
FENCE SHALL BE REMOVED AND PROPERLY DISPOSED OF WHEN TRIBUTARY AREA IS PERMANENTLY STABILIZED.

Creenco® AdvanTex® Vent Fan Assembly

Applications
The AdvanTex® Vent Fan Assembly is used in commercial-sized AdvanTex® Treatment Systems to gently pull air through the landfill media, ensuring that adequate oxygen is available for biological treatment.

General
Creenco's AdvanTex® Vent Fan Assembly consists of a waterproof fiberglass enclosure with equipment for venting onsite wastewater treatment systems. One enclosure can hold a vent fan with a carbon filter basin, a splice box, and an optional heater. The carbon filter scrubs the air that the system exhausts. An optional heater can be added in areas where cold temperatures require that air be heated before it enters the AdvanTex® treatment pods. The fan can be wired for 60 Hz or 50 Hz power and 120 or 240 VAC; heaters can be supplied for either 120 or 240 VAC power.



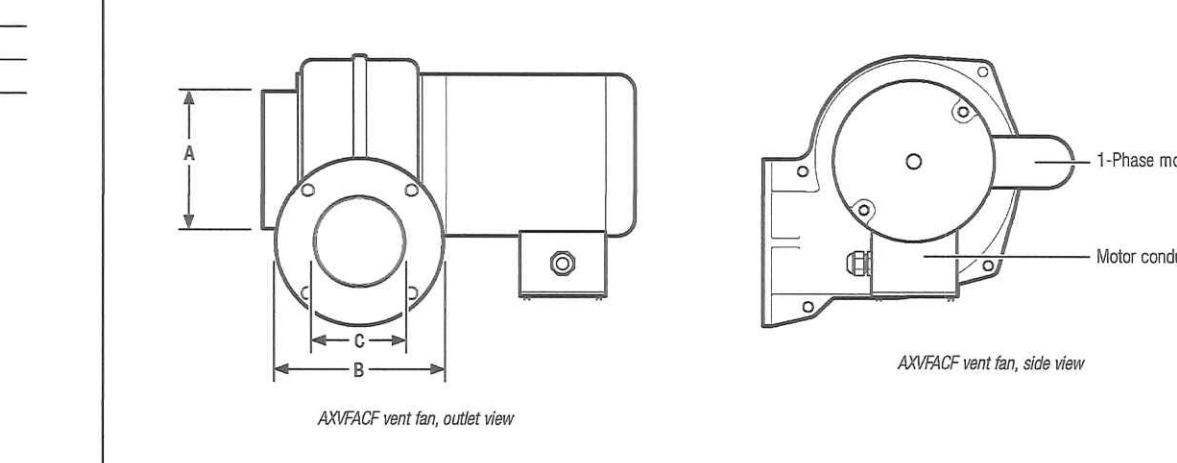
Creenco Systems® • 800-348-8843 • +1 541-459-4449 • www.creenco.com
RTD-ADVVFAC-1 Rev. 4.9 1/10 Page 1 of 2

Creenco® AdvanTex® Vent Fan

Materials of Construction
Housing: Aluminum
Wheel: Steel

Dimensions
A, in. (mm): 4 (102)
B, in. (mm): 2.58 (67)
C, in. (mm): 4.78 (124)
Inlet nominal pipe size, in. (mm): 4 (102)

Performance Data
80 Hz: 50 Hz
Horsepower (kW): 0.08 (0.08) / 0.08 (0.08)
Phase: 1 phase / 1 phase
Voltage: 115/240 / 240
Amperage: 1.4/0.7 / 0.9
RPM: 3400 / 2900
CFM at 0 in. H₂O static pressure: 245 / 205
CFM at 0.4 in. H₂O static pressure: 220 / 170
CFM at 0.8 in. H₂O static pressure: 190 / 130
CFM at 1.5 in. H₂O static pressure: 120 / n/a

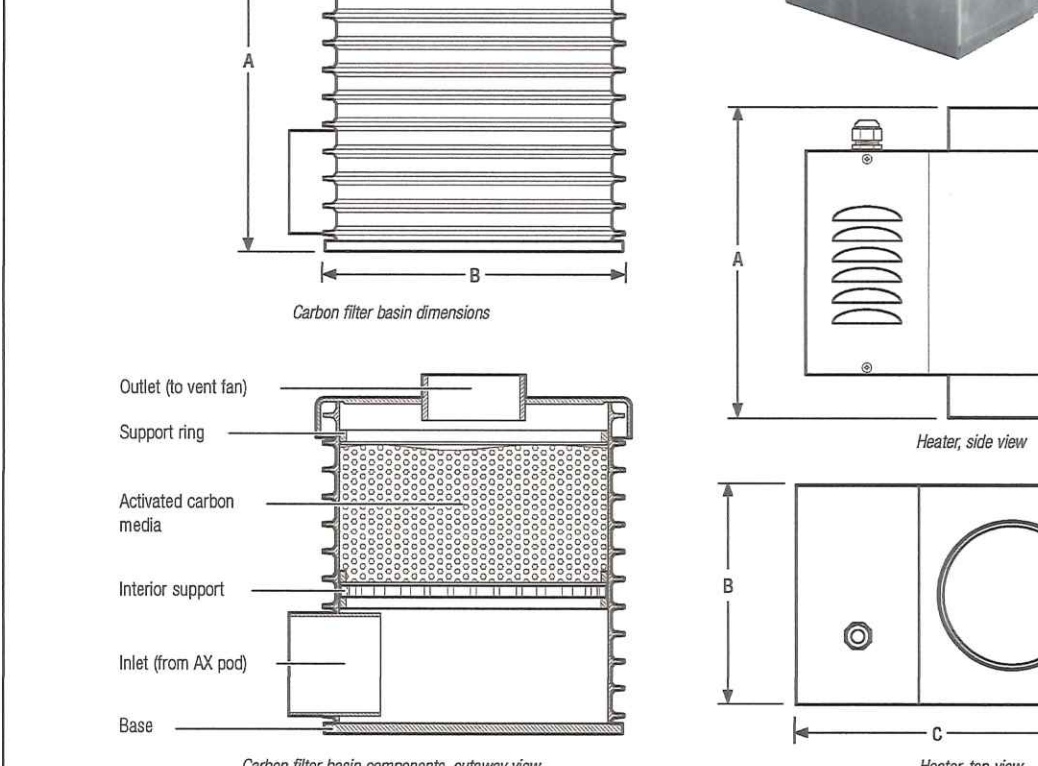


Creenco Systems® • 800-348-8843 • +1 541-459-4449 • www.creenco.com
RTD-ADVVFAC-1 Rev. 4.9 1/10 Page 2 of 2

Creenco® Carbon Filter Basin

Materials of Construction
Housing: PVC
Bottom: Fiberglass-reinforced polyester (FRP)
Interior supports: Polypropylene grid, polyethylene screen
Support rings: PVC
Lid: Fiberglass
Fill material: Activated carbon media

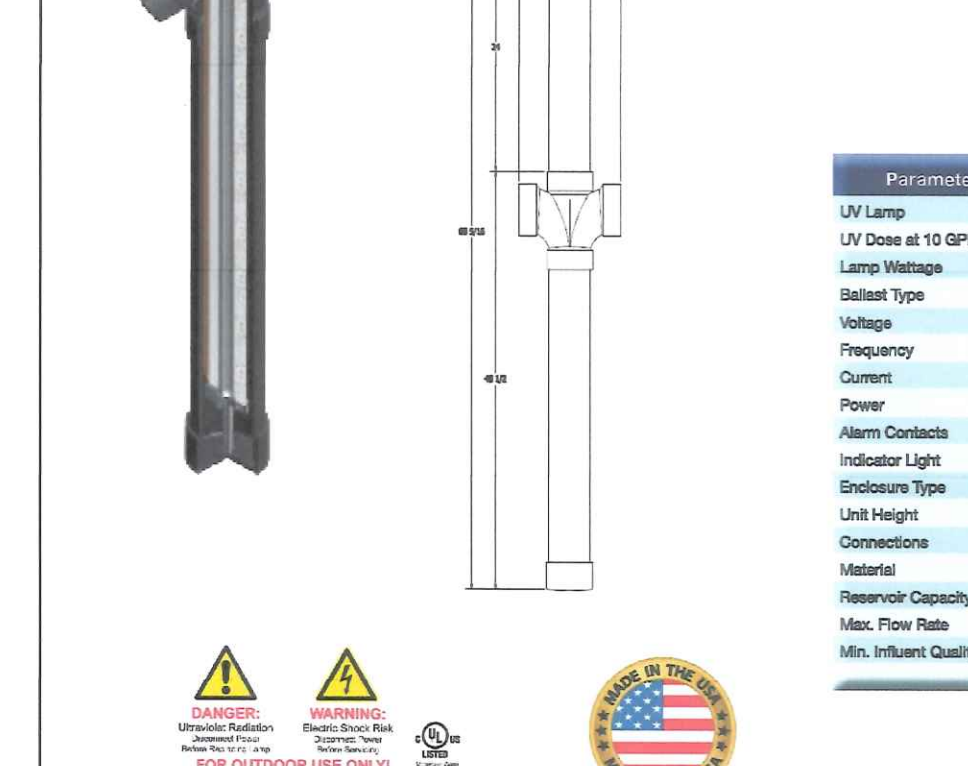
Dimensions
A, in. (mm): 21.5 (546)
B, in. (mm): 12.0 (305)
Inlet diameter: Accepts nominal 3-in. PVC pipe
Inlet diameter: Accepts nominal 2-in. pipe
Bash capacity, lbs (kg): 15 (6.8)



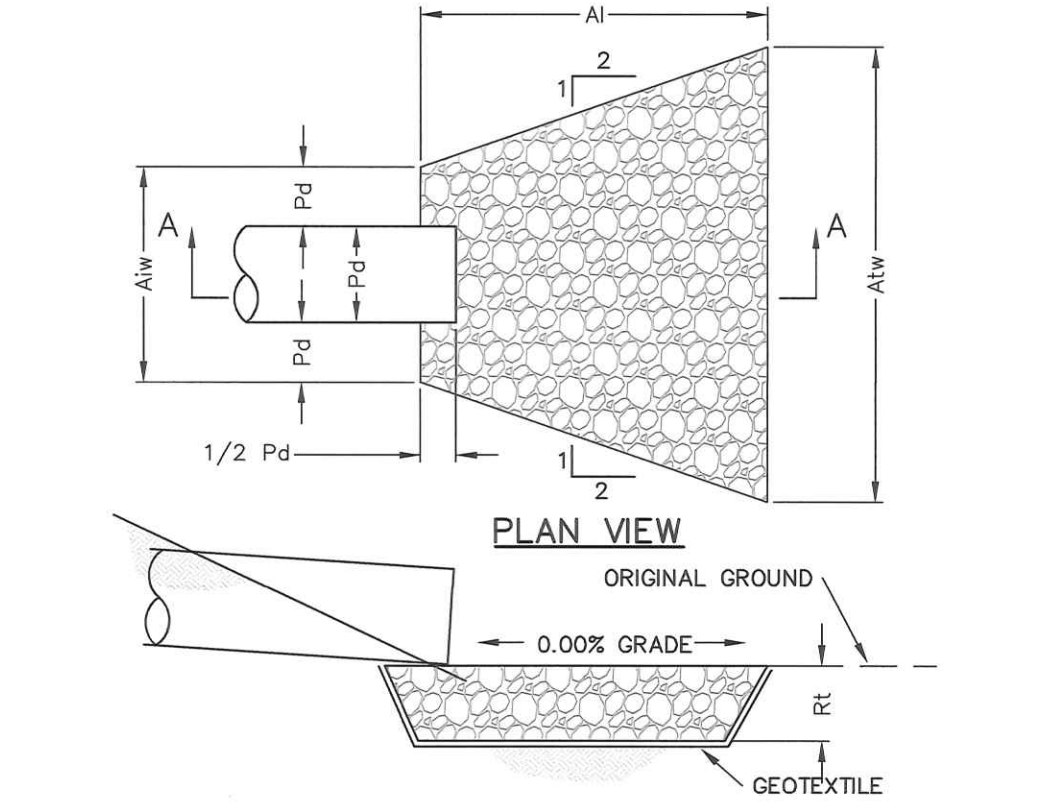
Creenco Systems® • 800-348-8843 • +1 541-459-4449 • www.creenco.com
RTD-ADVFCB-1 Rev. 1.0 1/08 Page 3 of 3

Jet® Illumi-Jet UV Disinfection Unit

Designed to disinfect the effluent from advanced onsite treatment systems, the model Illumi-Jet is capable of reducing fecal coliform bacteria levels to well below the most stringent U.S. treatment standards. The Illumi-Jet utilizes a germicidal lamp which emits 95% of the ultraviolet energy at the wavelength of 254 nanometers. This wavelength is in the region of maximum germicidal effectiveness and is highly lethal to virus, bacteria, protozoa and mold. The disinfection chamber couples directly to any system's 4" discharge pipe and is permanently installed below grade. When fully inserted, the lamp housing is properly positioned by an integrated keyway near the top of the disinfection chamber. This creates a well defined flow path ensuring system effluent has the proper ultraviolet exposure time. Under standard operating conditions, fecal coliform reduction exceeds 99.9%.



Jet Inc. 750 Alpha Drive Cleveland, OH 44143 www.jetincorp.com 800.321.8982
REV 2014-11-11



NOTES:
ALL APRONS SHALL BE CONSTRUCTED TO THE DIMENSIONS SHOWN. TERMINAL WIDTHS SHALL BE ADJUSTED AS NECESSARY TO MATCH RECEIVING CHANNELS.
ALL APRONS SHALL BE INSPECTED AT LEAST WEEKLY AND AFTER EACH RUNOFF EVENT. DISPLACED RIPRAP WITHIN THE APRON SHALL BE REPLACED IMMEDIATELY.
EXTEND RIPRAP ON BACK SIDE OF APRON TO AT LEAST 1/2 DEPTH OF PIPE ON BOTH SIDES TO PREVENT SCOUR AROUND THE PIPE.

Pd (in)	RIPRAP SIZE (R-)	THICK. Rt (in)	APRON		
			LENGTH Ai (ft)	INITIAL WIDTH Atw (ft)	TERMINAL WIDTH Atw (ft)
3	R-3	9	2.5	1	2.5

RIPRAP APRON AT PIPE OUTLET

OWNER & CLIENT
STELLAR HOMES LLC
P.O. BOX 553
OLEY, PA 19547
PH: 215-783-6721

PROJECT
SAVORY/ 2693 WEST PHILADELPHIA PIKE
2693 WEST PHILADELPHIA PIKE, OLEY

OLEY TOWNSHIP BERKS COUNTY PENNA.

ALL COUNTY and ASSOCIATES INC.
P.O. BOX 472
1841 POTTSTOWN PIKE
ST. PETERS, PA 19470
610-469-3830
FAX: 610-469-6385

SURVEYING ENGINEERING ENVIRONMENTAL PERMITTING
1-800-220-9165
E-MAIL: INFO@BALL-COUNTY-ASSOC.COM

FIELD PERSONNEL		SHEET TITLE	
DESIGNED BY	DRAWN BY	CHECKED BY	PROJECT NO.
	DPM		SAVOBE-0003
PLAN SCALE	CADD FILE		DATE
N/A	SAVORY-2693 W. PHILADELPHIA PIKE - SFTT SSD		01/15/2021
			SHEET NO.
			2 OF 2